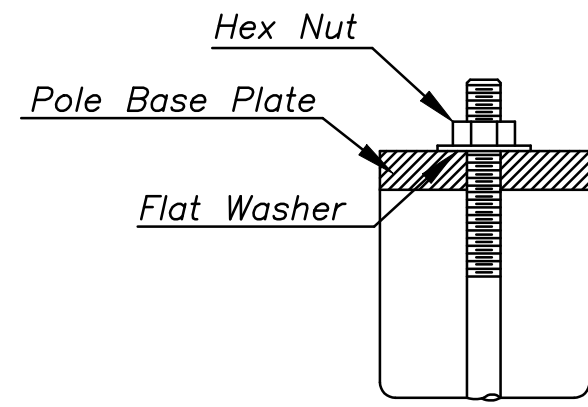
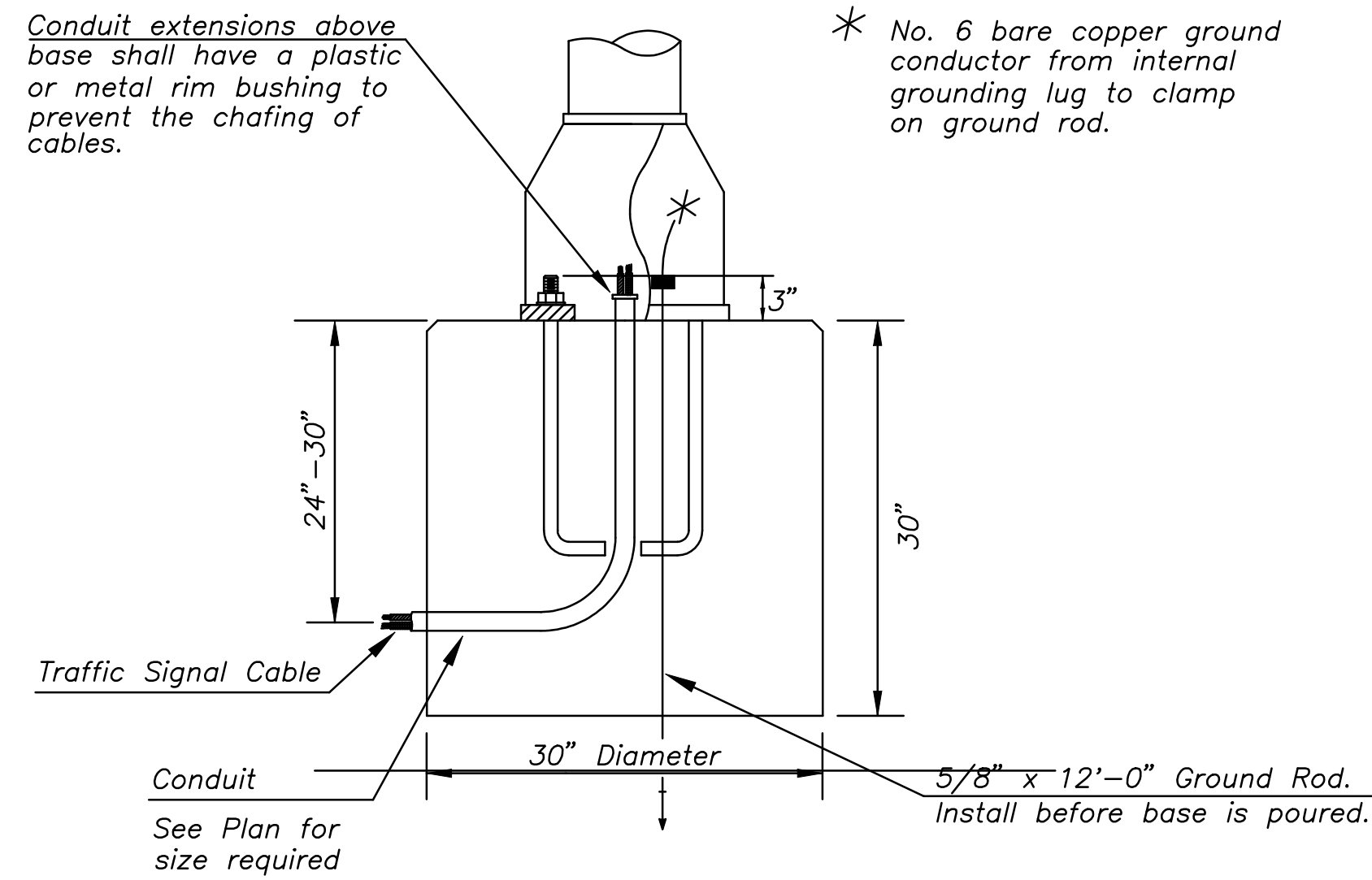
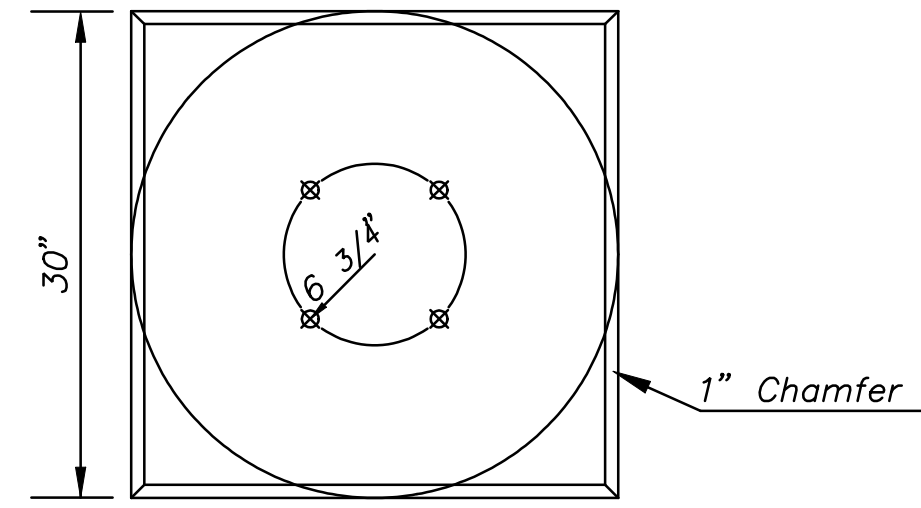


DSNR: DRM OPER: DRP SCALE: i:/2008/08521-002/Standards/08521-2-Pedestal.dgn LAST REV: 9-12-2008 BY: drp

Use Keystone "No-Weld Number 1 Anti-Seize Compound" on all bolts & nuts.

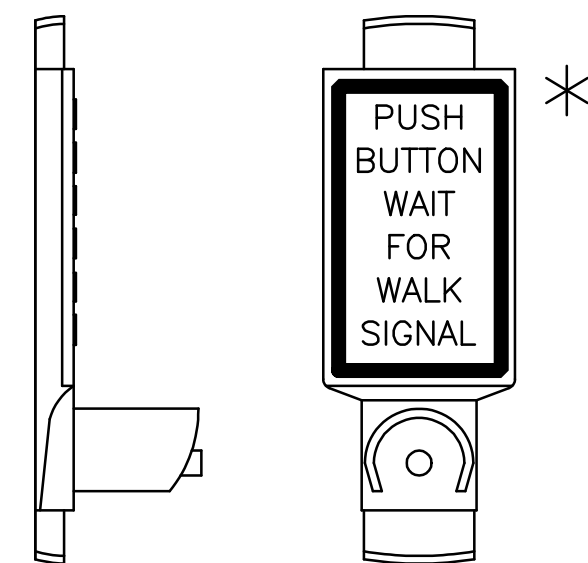


ANCHOR BOLT DETAIL



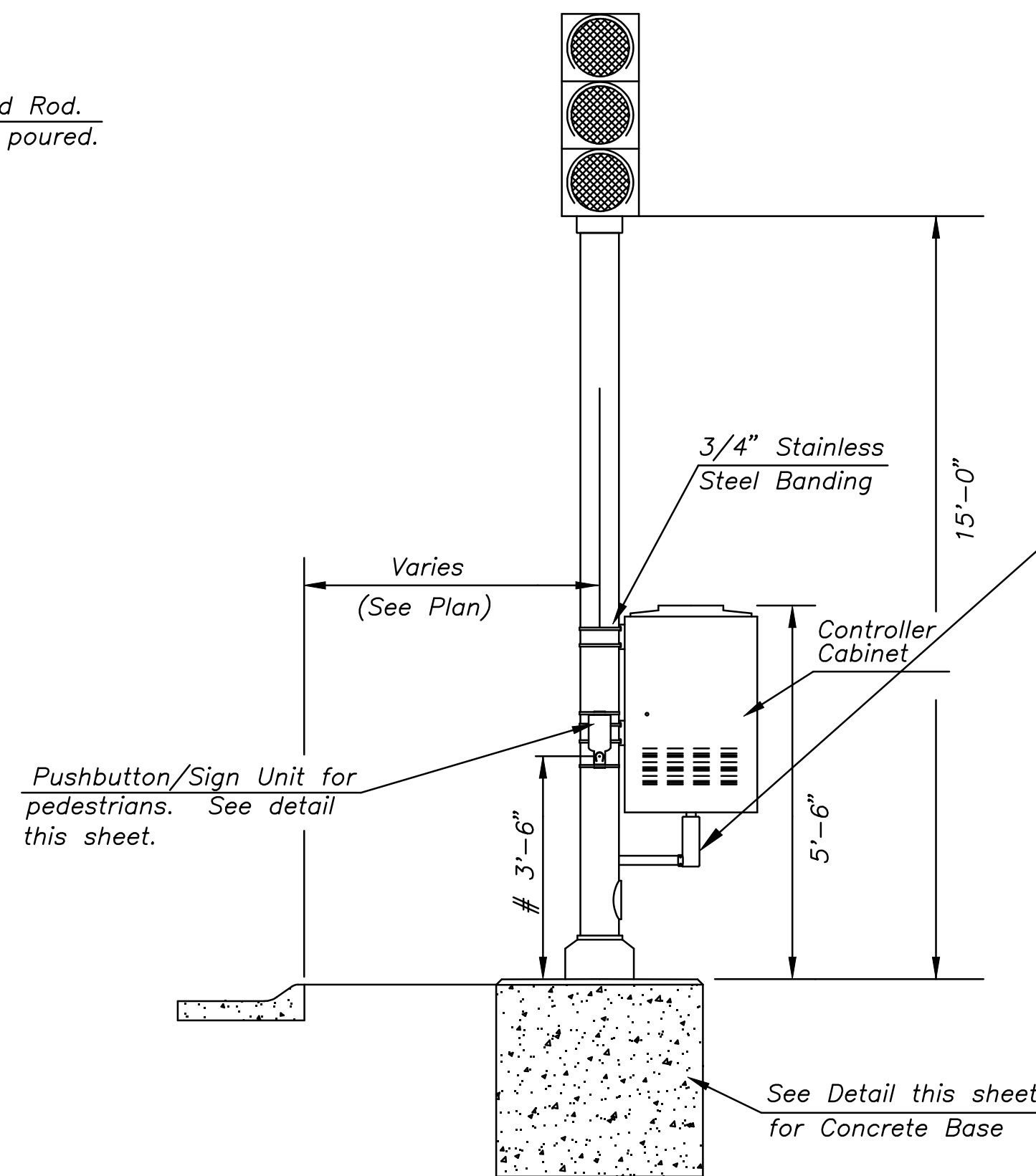
CONCRETE BASE DETAIL

*NOTE: MESSAGE TO BE CAST WITH HOUSING (ONE PIECE)

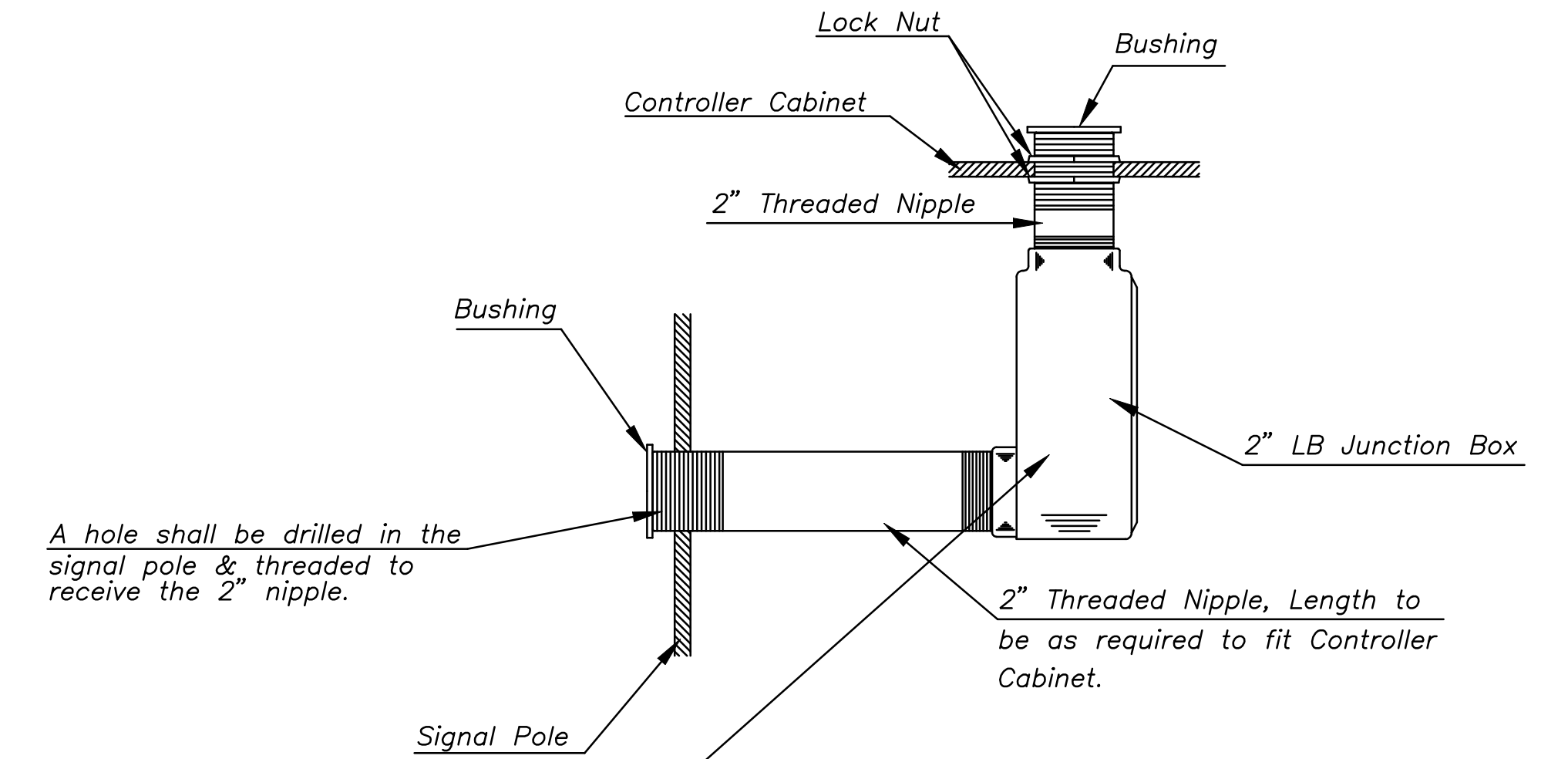


PEDESTRIAN PUSHBUTTON/SIGN UNIT DETAIL

INSTALL PEDESTRIAN PUSHBUTTON UNDERNEATH CORRESPONDING PEDESTRIAN SIGNAL HEAD ON SIDE OF POLE NEAREST CROSSWALK. UNIT SHALL BE FIRMLY ATTACHED TO THE SIDE OF POLE WITH 3/4" STEEL BANDS. SHARP ENDS SHALL BE FOLDED UNDER TO PREVENT INJURY TO PEDESTRIANS.



TRAFFIC SIGNAL PEDESTAL



From Sidewalk Finish Grade to Center of Pushbutton.

<p>THE CITY OF WICHITA</p> <p>CITY ENGINEER'S OFFICE 455 NORTH MAIN STREET WICHITA, KANSAS 67202 (316) 268-4901 (316) 268-4114 FAX</p>	Pawnee St. & Webb Rd. TRAFFIC SIGNAL PEDESTAL & CONCRETE BASE DETAIL SHEET		
	PROJECT NUMBER 472-84720 PHASE 1		
	DRAWN BY: T.J.M. DATE: MAY 97	SCALE NO SCALE	REVISED BY: DATE:
	CITY OF WICHITA DEPARTMENT OF PUBLIC WORKS DIVISION OF TRAFFIC ENGINEERING WM. G. MCKINLEY P.E. TRAFFIC ENGINEER		
SHEET 5 OF 7			