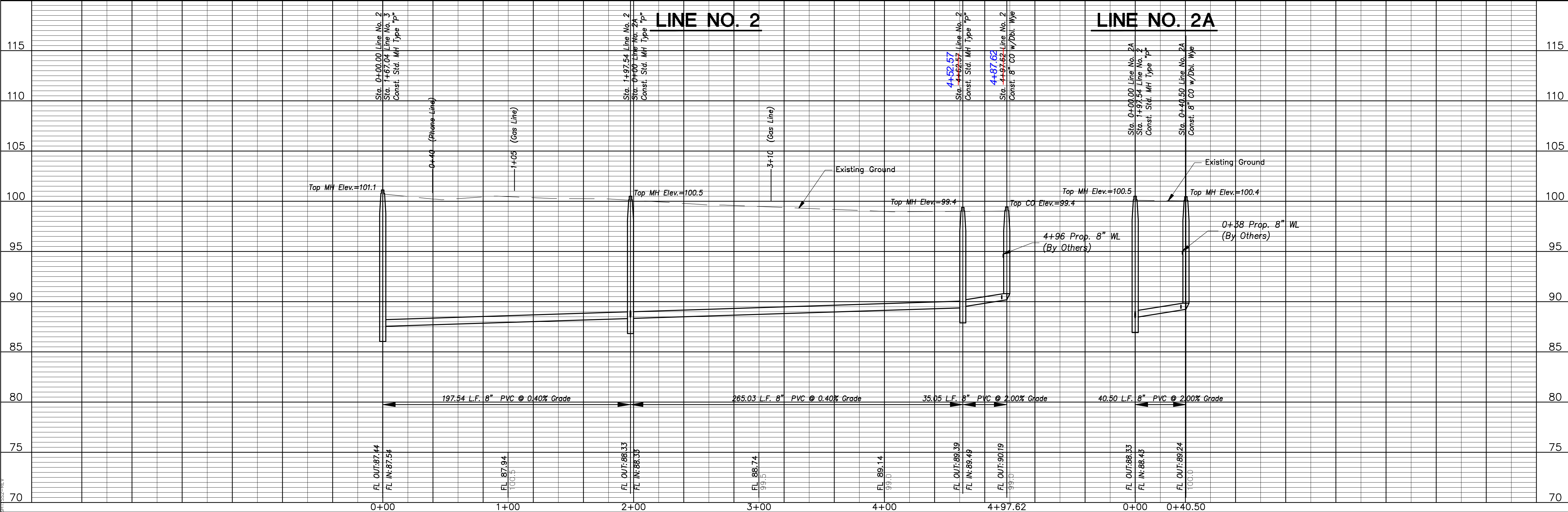


- NOTES:**
- Contractor to Field Verify location and Depth of All Utilities Prior to Construction and Report Findings to Project Engineer.
  - Contractor shall sand flush and vibrate all gravel road and driveway crossings.

Remove Trees Only as Needed for Construction. Cost Shall be Subsidiary to Site Clearing.



**FINAL**

Designed By: J. Dickman  
 Drawn By: M. Tucker  
 P.O. Job No.: 1805A  
 Date: May 2008

**POE & ASSOCIATES, INC.**  
 CONSULTING ENGINEERS  
 5940 E. Central, Suite 200 - Wichita, KS 67208-4242  
 Phone 316/685-4114 • FAX 316/685-4444

**OATVILLE ADDITION**  
 SANITARY SEWER IMPROVEMENTS  
 LINE NO. 2 & 2A  
 CITY OF WICHITA, KANSAS  
 JAMES ARMOUR, P.E. - CITY ENGINEER  
 Proj.# 468-83980 O.C.A.# 744113

No.	Date	By	Approved	Revision
1	1/23/2009	JPD	JWU	Changed Location of Sanitary Sewer Line No. 2 & 2A

Sheet 3 of 18