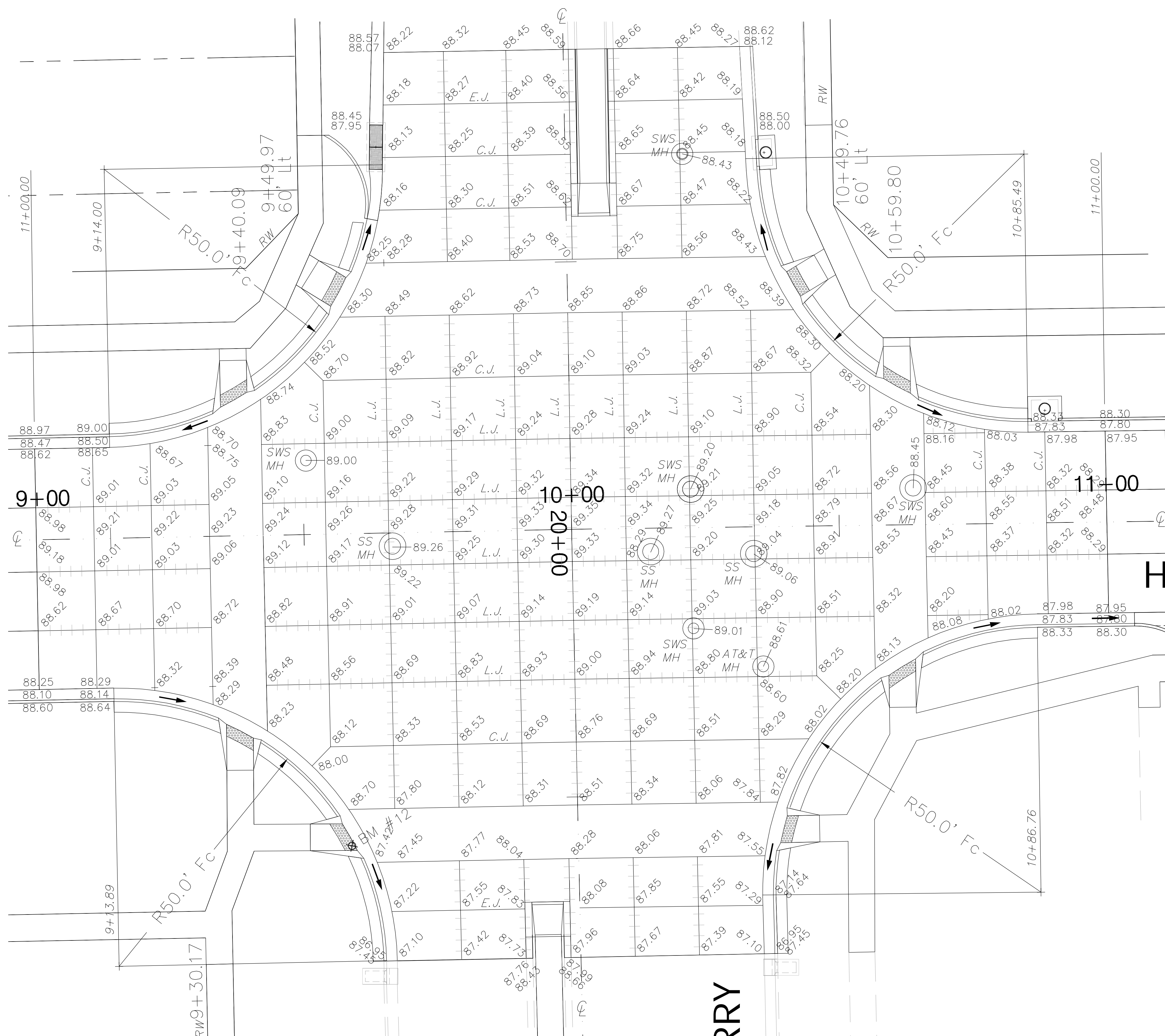
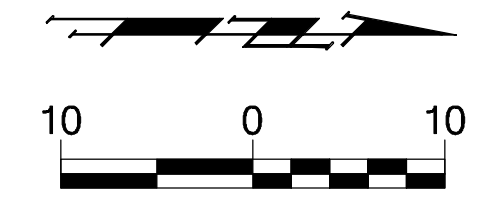


FHWA REGION NO.	STATE	PROJECT NO.	FISCAL YEAR	SHEET NO.	TOTAL SHEETS
7	KANSAS	87N-0503-01	2009	27	101

FEDERAL Project No. ARRA-N050(301)



HYDRAULIC

HARRY

Drawing File: E:\eng\Hydraulic\Kellogg to Harry Pav\Land\dwg\ACADBase.dwg

Design: KK  
 Drawn: Staff  
 Approved: JFB  
 Scale: NOTED

Project No. 0710 E.968 CAPITAL IMPROVEMENT PROJECT  
 HYDRAULIC / HARRY  
 HARRY INTERSECTION ELEVATIONS  
 HYDRAULIC PAVING IMPROVEMENTS - HARRY to KELLOGG

**Baughman Company, P.A.**  
 315 Ellis St. Wichita, KS 67211 P 316-262-7271 F 316-262-0149  
 ENGINEERING | SURVEYING | PLANNING | LANDSCAPE ARCHITECTURE

September 2009  
 SHEET 27 OF 101