

FHWA REGION NO.	STATE	PROJECT NO.	FISCAL YEAR	SHEET NO.	TOTAL SHEETS
7	KANSAS	87N-0503-01	2009	42	101

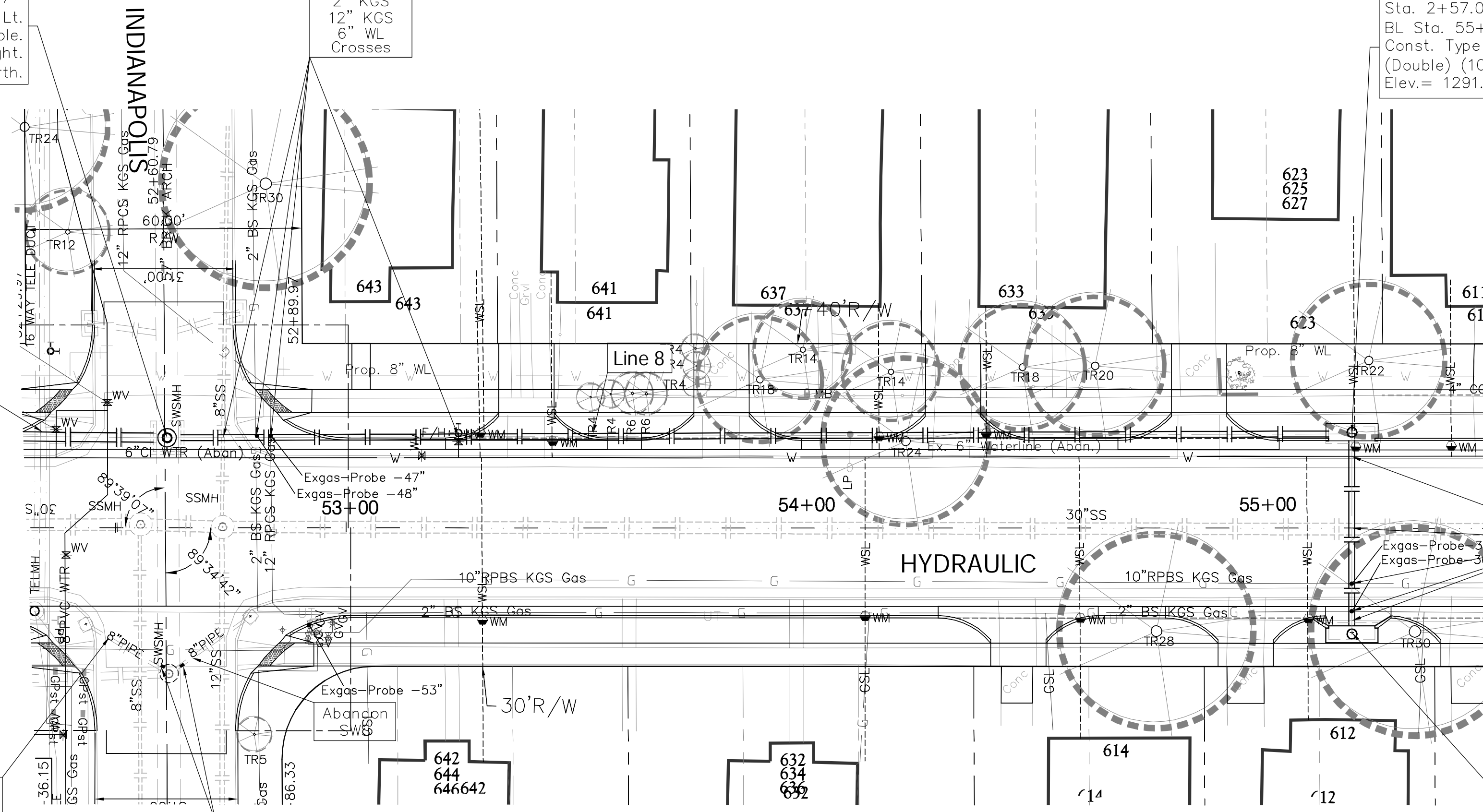
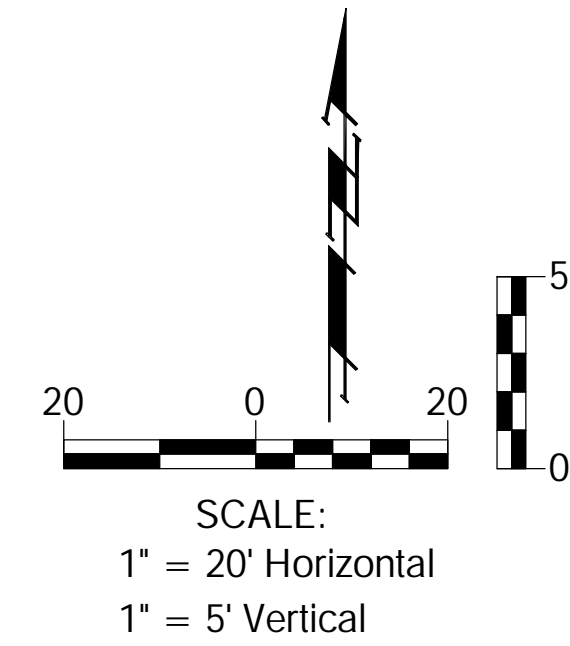
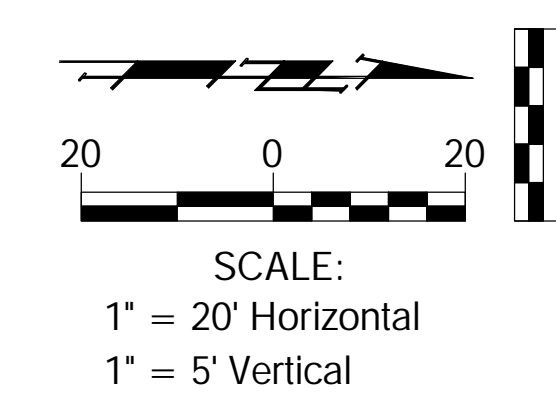
FEDERAL Project No. ARRA-N050(301)

Sta. 0+00 Begin Line 8=
Sta. 0+00 Line 7=
BL Sta. 52+61.19, 19.56' Lt.
Connect to Ex. Manhole.
Grout & Seal Water Tight.
Extend 18" SWS North.

CAUTION!
8" SS
2" KGS
12" KGS
6" WL
Crosses

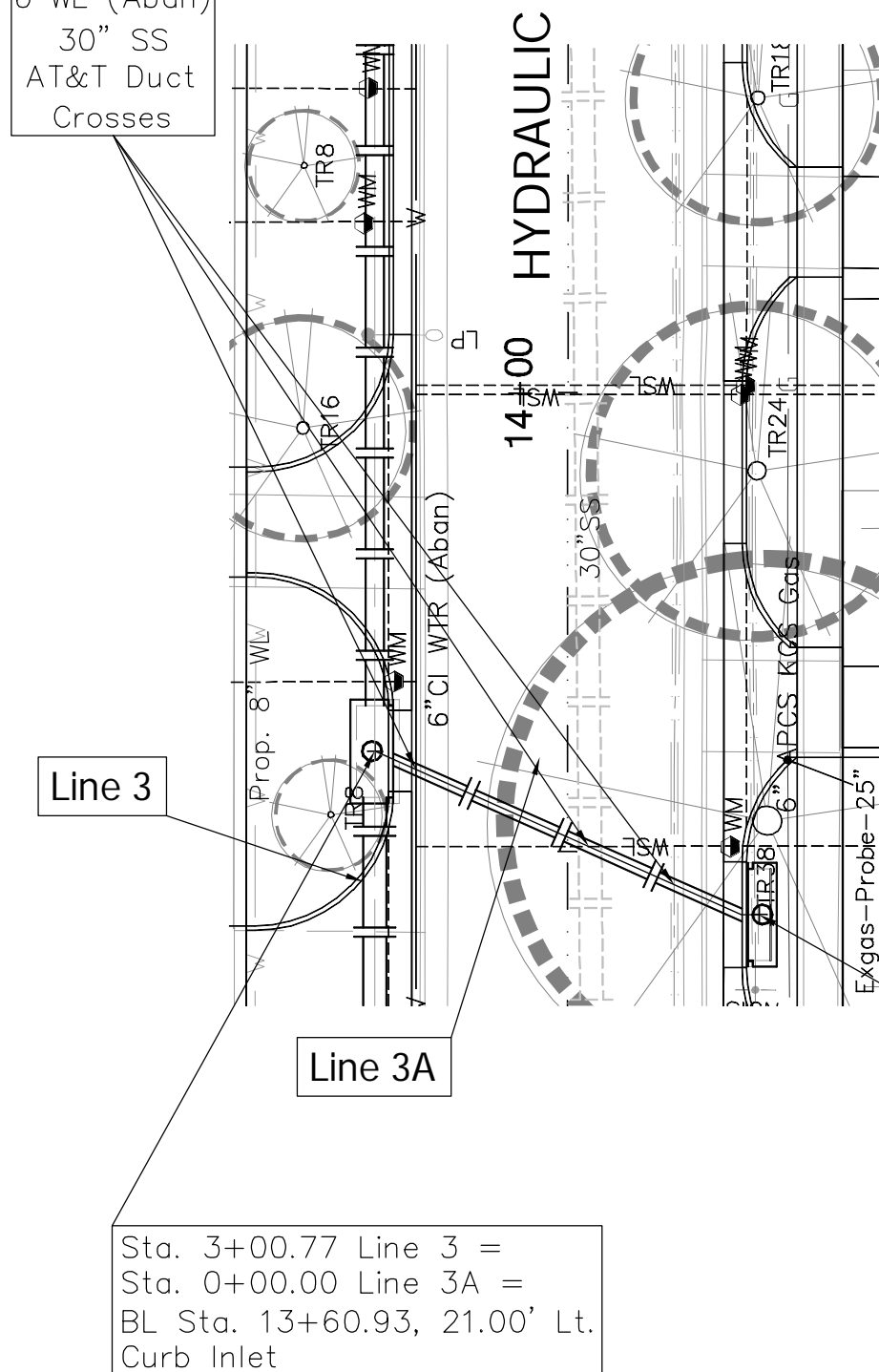
Sta. 2+57.06 Line 8=
BL Sta. 55+18.24, 20.50' Lt.
Const. Type I Curb Inlet
(Double) (10' x 3')
Elev. = 1291.60 Top

CAUTION!
6" WL (Abdn)
30" SS
AT&T Duct
Crosses



CAUTION!
6" WL
(Abdn.)
30" SS
10" KGS
2" KGS
AT&T Duct
Crosses

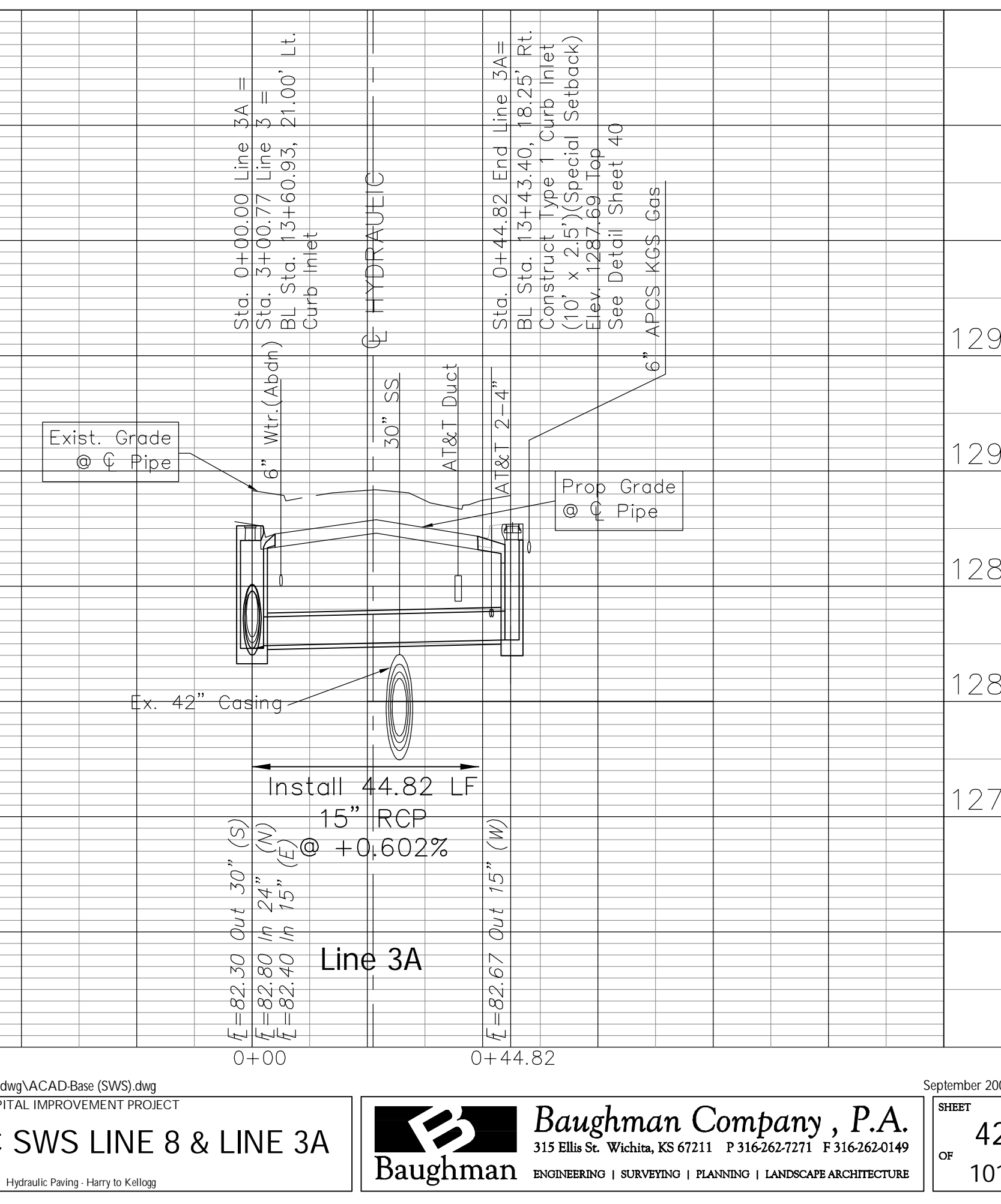
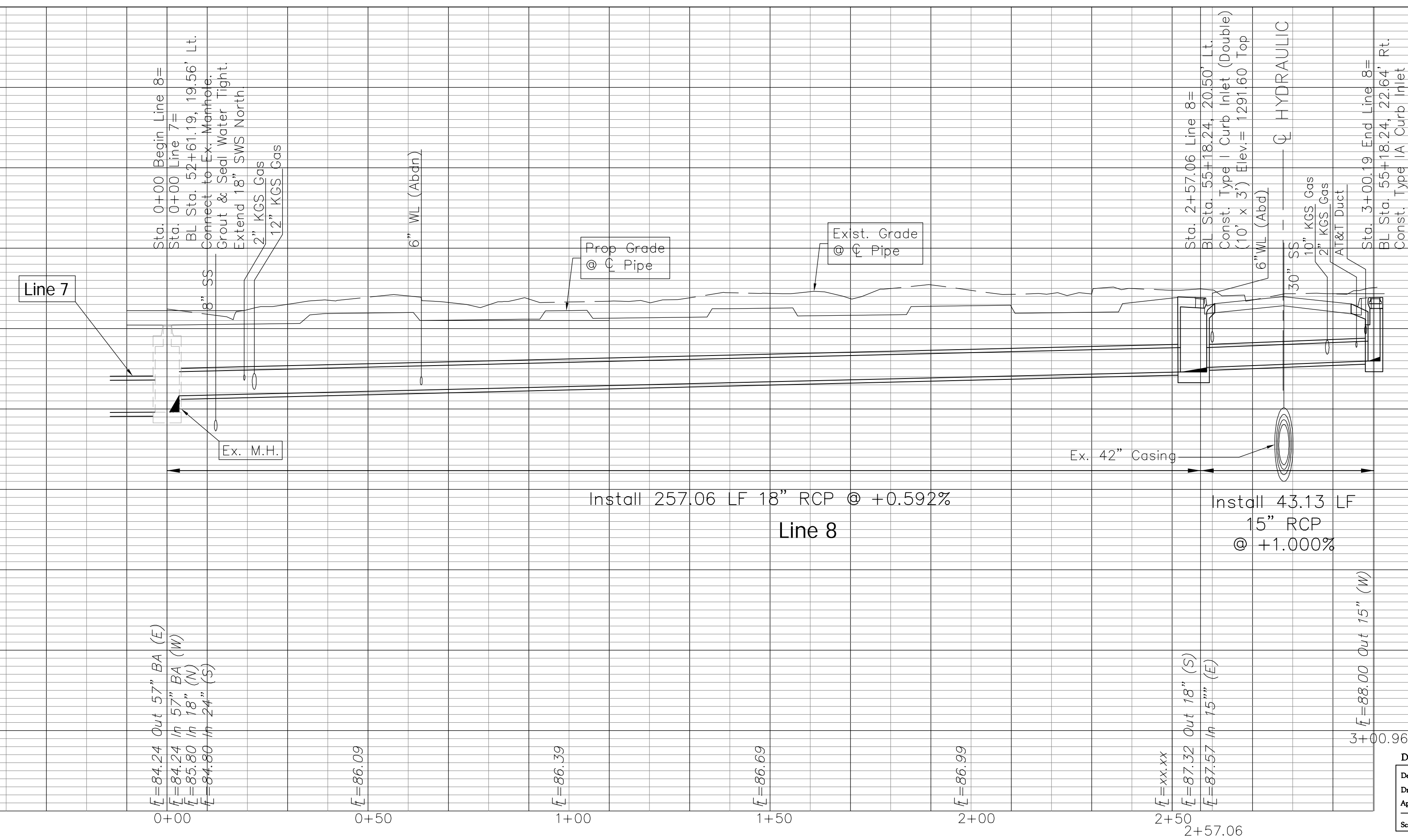
Sta. 3+00.19 End Line 8=
BL Sta. 55+18.24, 22.64' Rt.
Const. Type IA Curb Inlet
(Double) (10' x 3')
Elev. = 1291.60 Top



Sta. 0+44.82 End Line 3A=
BL Sta. 13+43.40, 18.25' Rt.
Construct Type 1 Curb Inlet
(10' x 2.5') (Special Setback)
Elev. 1287.69 Top
See Detail Sheet 40

Line 8

Line 3A



Drawing File: E:\eng\Hydraulic\Kellgog to Harry Pav\Land\dwg\ACAD Base (SWS).dwg
 Design: KK
 Drawn: STAFF
 Approved: JFB
 Scale: NOTED

Project No. 0710 E.968 CAPITAL IMPROVEMENT PROJECT
HYDRAULIC SWS LINE 8 & LINE 3A
 Hydraulic Paving - Harry to Kellgog

Baughman Company, P.A.
 315 Ellis St. Wichita, KS 67211 P 316-262-7271 F 316-262-0149
 ENGINEERING | SURVEYING | PLANNING | LANDSCAPE ARCHITECTURE

September 2009
 SHEET
42
 OF
101