

W.L. Sta. 13+88.37 Line 1 =  
B.L. 1 Sta. 20+50.00, 34.00' Lt. =  
Match Point.

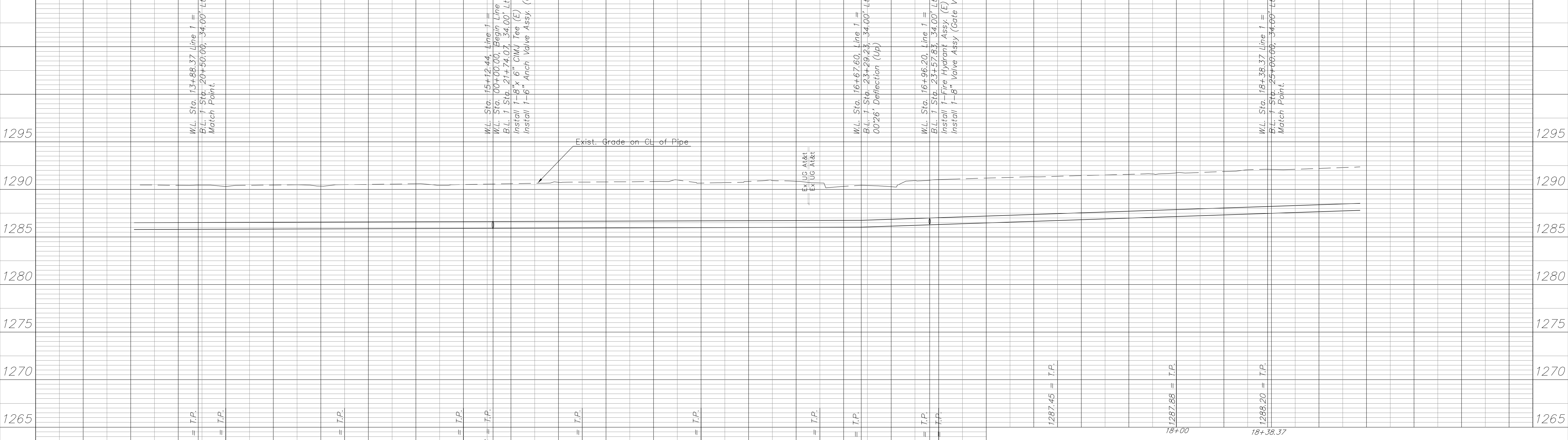
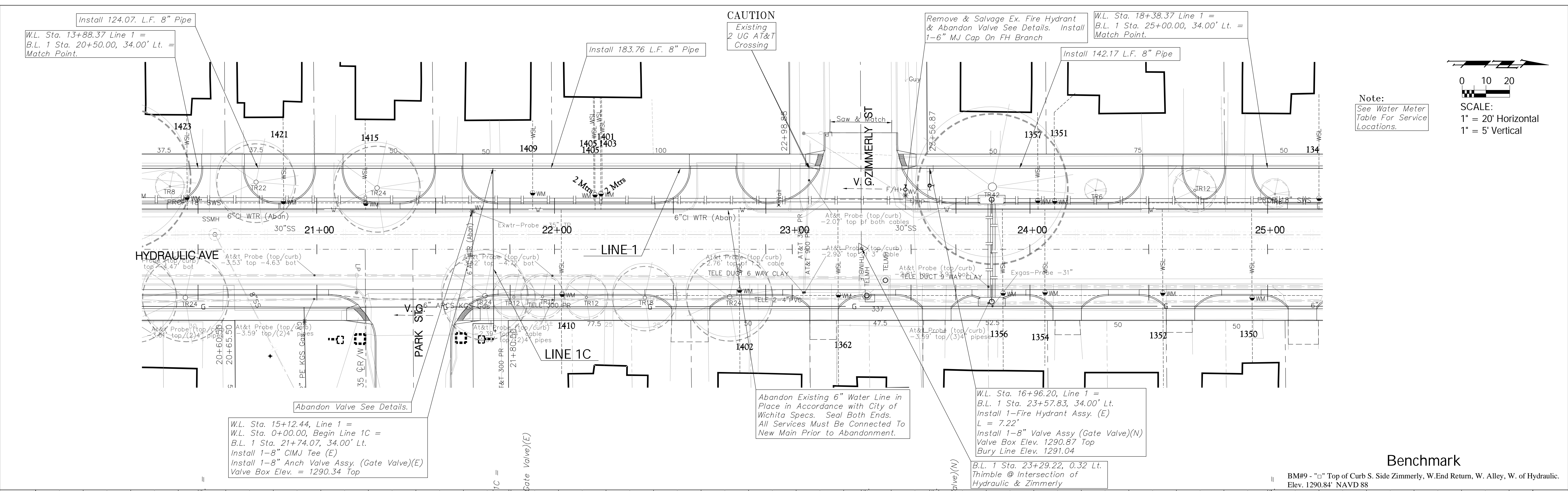
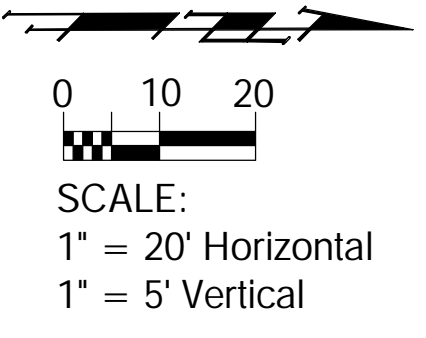
Install 183.76 L.F. 8" Pipe

CAUTION  
Existing  
2 UG AT&T  
Crossing

Remove & Salvage Ex. Fire Hydrant  
& Abandon Valve See Details. Install  
1-6" MJ Cap On FH Branch

W.L. Sta. 18+38.37 Line 1 =  
B.L. 1 Sta. 25+00.00, 34.00' Lt. =  
Match Point.

Note:  
See Water Meter  
Table For Service  
Locations.



W.L. Sta. 13+88.37 Line 1 =  
B.L. 1 Sta. 20+50.00, 34.00' Lt. =  
Match Point.

W.L. Sta. 15+12.44, Line 1 =  
W.L. Sta. 0+00.00, Begin Line 1C =  
B.L. 1 Sta. 21+74.07, 34.00' Lt.  
Install 1-8" CIMJ Tee (E)  
Install 1-8" Anch Valve Assy. (Gate Valve)(E)  
Valve Box Elev. = 1290.34 Top

Abandon Existing 6" Water Line in  
Place in Accordance with City of  
Wichita Specs. Seal Both Ends.  
All Services Must Be Connected to  
New Main Prior to Abandonment.

W.L. Sta. 16+96.20, Line 1 =  
B.L. 1 Sta. 23+57.83, 34.00' Lt.  
Install 1-Fire Hydrant Assy. (E)  
L = 7.22'  
Install 1-8" Valve Assy (Gate Valve)(N)  
Valve Box Elev. 1290.87 Top  
Bury Line Elev. 1291.04

Benchmark

BM#9 - "□" Top of Curb S. Side Zimmerly, W.End Return, W. Alley, W. of Hydraulic.  
Elev. 1290.84' NAVD 88