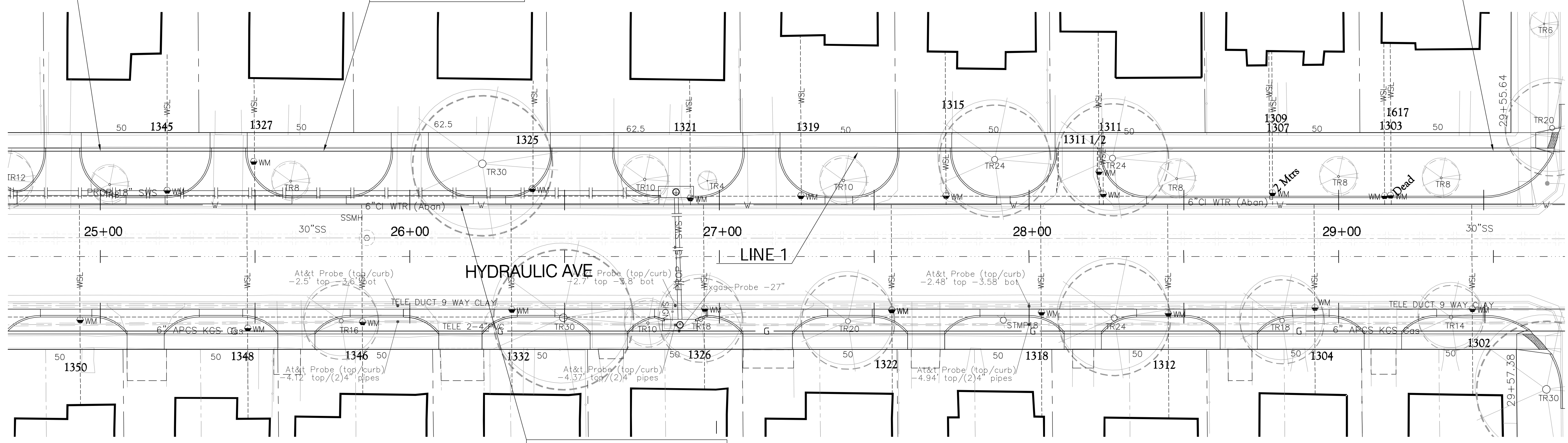
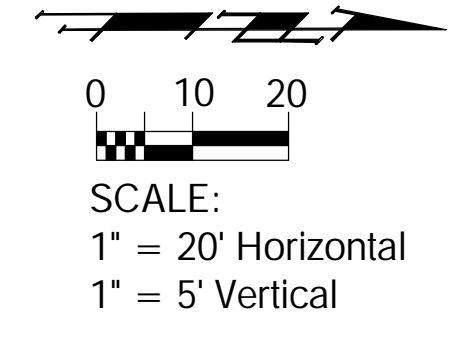


W.L. Sta. 18+38.37 Line 1 =
B.L. 1 Sta. 25+00.00, 34.00' Lt. =
Match Point.

W.L. Sta. 22+88.37 Line 1 =
B.L. 1 Sta. 29+50.00, 34.00' Lt. =
Match Point.

Install 450.00 L.F. 8" Pipe

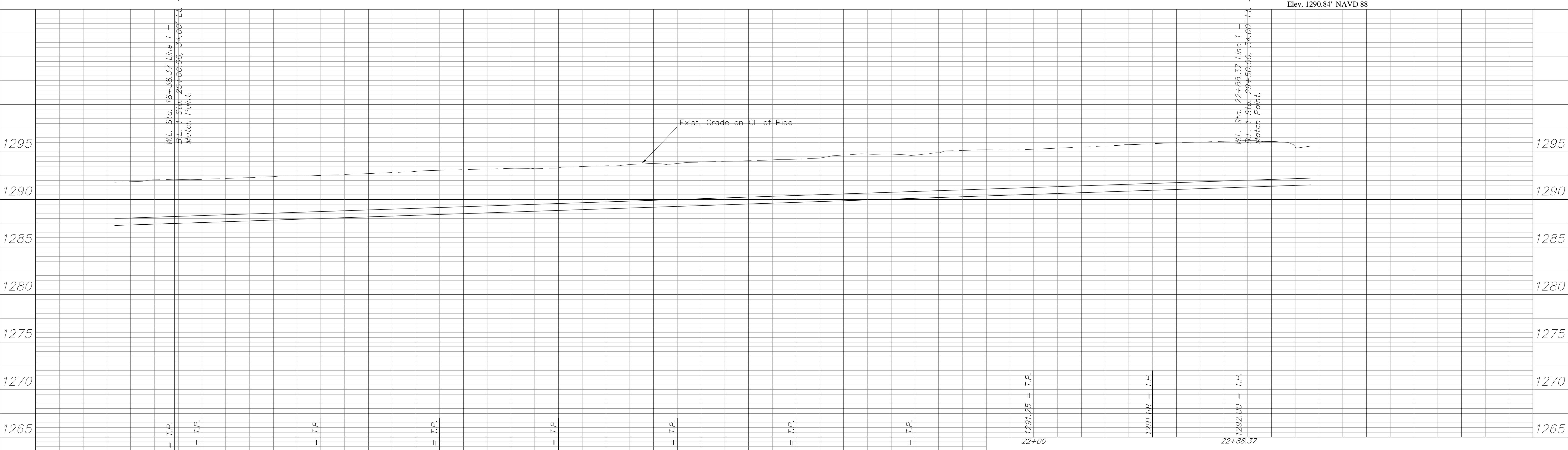
Note:
See Water Meter
Table For Service
Locations.



Abandon Existing 6" Water Line in
Place in Accordance with City of
Wichita Specs. Seal Both Ends.
All Services Must Be Connected To
New Main Prior to Abandonment.

Benchmark

BM#8 - "□" Top of Curb S. Side Bayley, E End Return, E Side Alley, W. of Hydraulic.
Elev. 1296.15' NAVD 88
BM#9 - "□" Top of Curb S. Side Zimmerly, W. End Return, W. Alley, W. of Hydraulic.
Elev. 1290.84' NAVD 88



Drawing File: E:\Eng\Hydraulic\Kelllogg to Harry Pav\Land\dwg\ACADBase (Water).dwg
Design: TCA
Drawn: TCA
Approved: JFB
Scale: 1:20
Project No. 0710E969 CAPITAL IMPROVEMENT PROJECT
HYDRAULIC AVENUE
Line 1, W.L. Sta. 18+38.37 to W.L. Sta 22+88.37
SOUTH OF HARRY TO KELLOGG DRIVE

Baughman Company, P.A.
315 Ellis St. Wichita, KS 67211 P 316-262-7271 F 316-262-0149
ENGINEERING | SURVEYING | PLANNING | LANDSCAPE ARCHITECTURE