

W.L. Sta. 30+96.96 Line 1 =
B.L. 1 Sta. 37+50.00, 28.50' Lt =
Match Point.

Abandon Valve See Details.

Install 35.76 L.F. 8" Pipe

W.L. Sta. 33+49.00, Line 1 PVI =
B.L. 1 Sta. 40+02.04, 28.50' Lt.
00'24" Deflection (Up)

CAUTION
Existing
GSL
Crossing

W.L. Sta. 34+96.96 Line 1 =
B.L. 1 Sta. 41+50.00, 28.50' Lt =
Match Point.

CAUTION
Prop
8" SS
Crossing
Proposed Concrete
Parking Lot
(By Others)

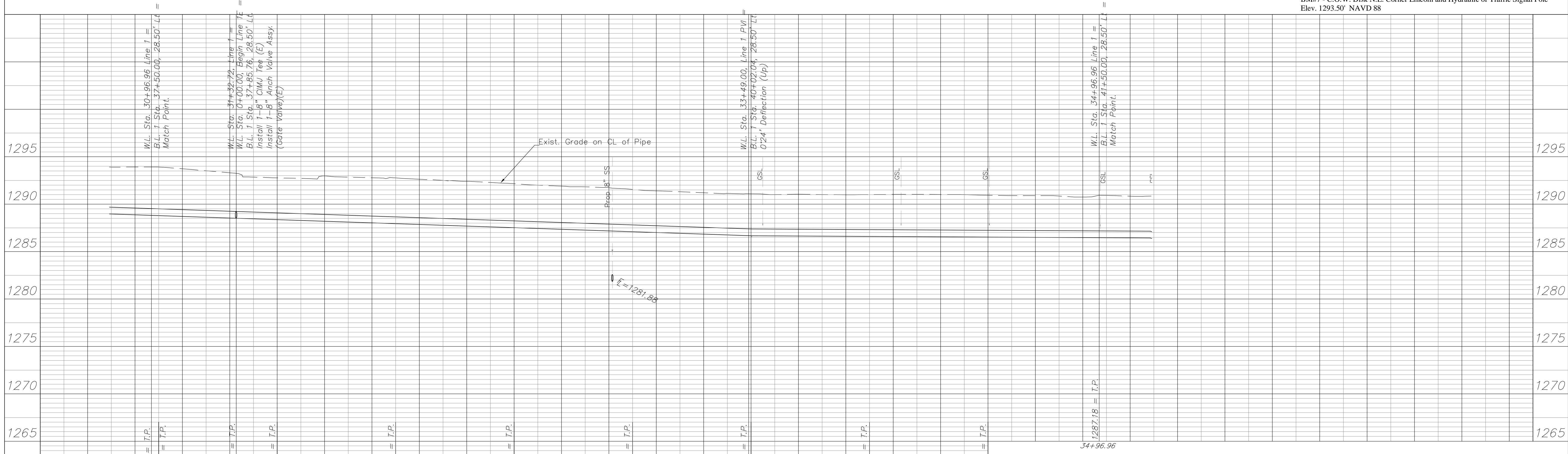
Prop. 8" SS
Proposed Alley
(By Others)

W.L. Sta. 31+32.72, Line 1 =
W.L. Sta. 0+00.00, Begin Line 1E =
B.L. 1 Sta. 37+85.76, 28.50' Lt.
Install 1-8" CIMJ Tee (E)
Install 1-8" Anch Valve Assy. (Gate Valve)(E)
Valve Box Elev. = 1293.13 Top

Abandon Existing 6" Water Line in
Place in Accordance with City of
Wichita Specs. Seal Both Ends.
All Services Must Be Connected To
New Main Prior to Abandonment.

Benchmark

BM#6 - "□" Top of Curb E. End Return, S. Drive into Quick Trip, W. of Hydraulic.
Elev. 1294.16' NAVD 88
BM#7 - C.O.W. Disk N.E. Corner Lincoln and Hydraulic of Traffic Signal Pole
Elev. 1293.50' NAVD 88



Design: TCA Drawn: TCA Approved: JFB Scale: 1:20	Project No: 0710E969 CAPITAL IMPROVEMENT PROJECT HYDRAULIC AVENUE Line 1, W.L. Sta. 30+96.96 to W.L. Sta 34+96.96 SOUTH OF HARRY TO KELLOGG DRIVE	Baughman Company, P.A. 315 Ellis St. Wichita, KS 67211 P 316-262-7271 F 316-262-0149 ENGINEERING SURVEYING PLANNING LANDSCAPE ARCHITECTURE	September 2009 SHEET 11 OF 18
---	--	---	---