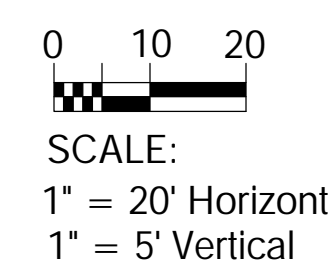
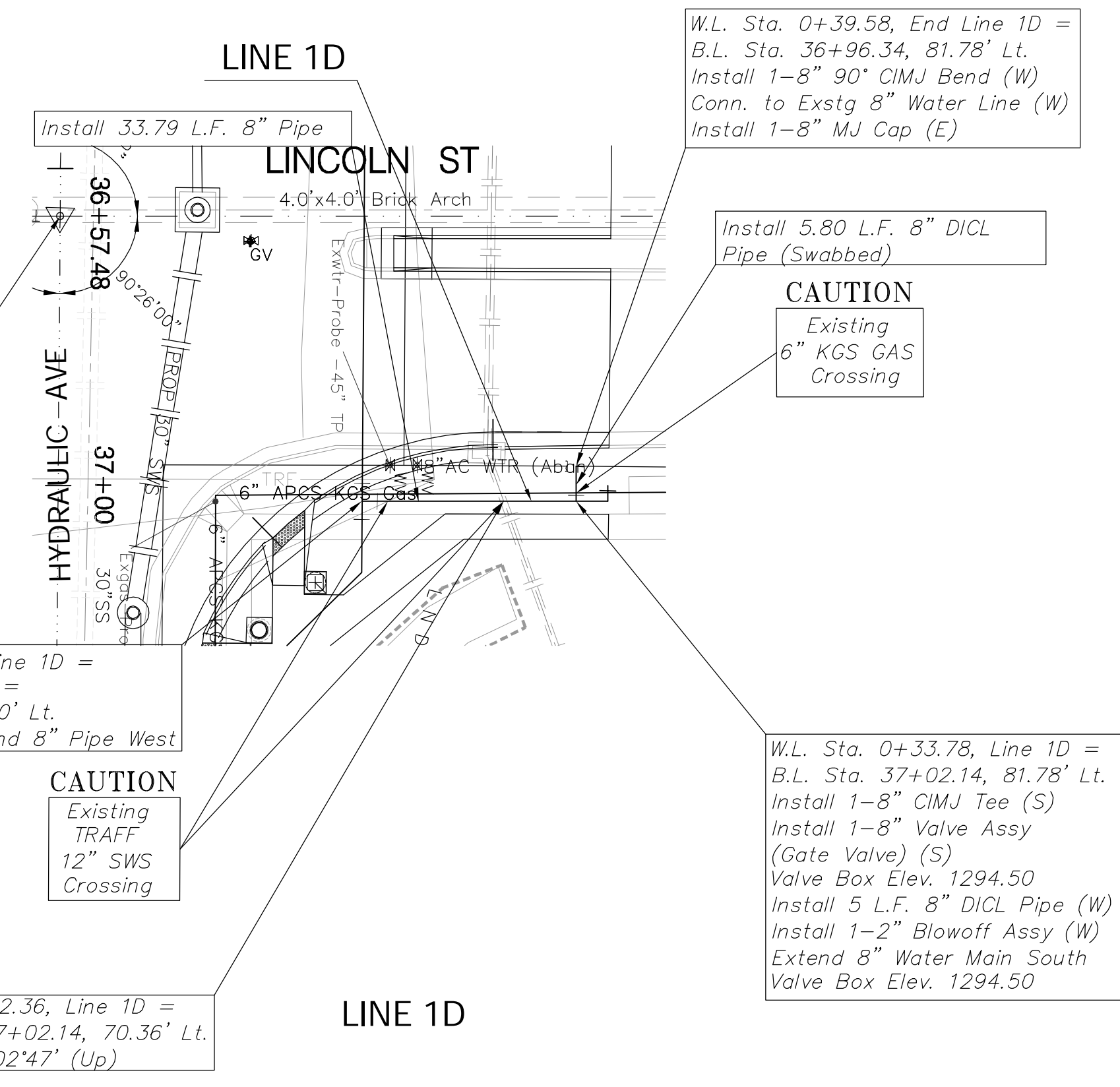


B.L. 1 36+57.48, Thimble @ Intersection of Hydraulic & Lincoln

W.L. Sta. 0+00.00, Begin Line 1D =
W.L. Sta. 30+41.02, Line 1 =
B.L. 1 Sta. 37+02.14, 48.00' Lt.
Connect to Valve and Extend 8" Pipe West

W.L. Sta. 0+22.36, Line 1D =
B.L. 1 Sta. 37+02.14, 70.36' Lt.
Deflect Pipe 02'47" (Up)

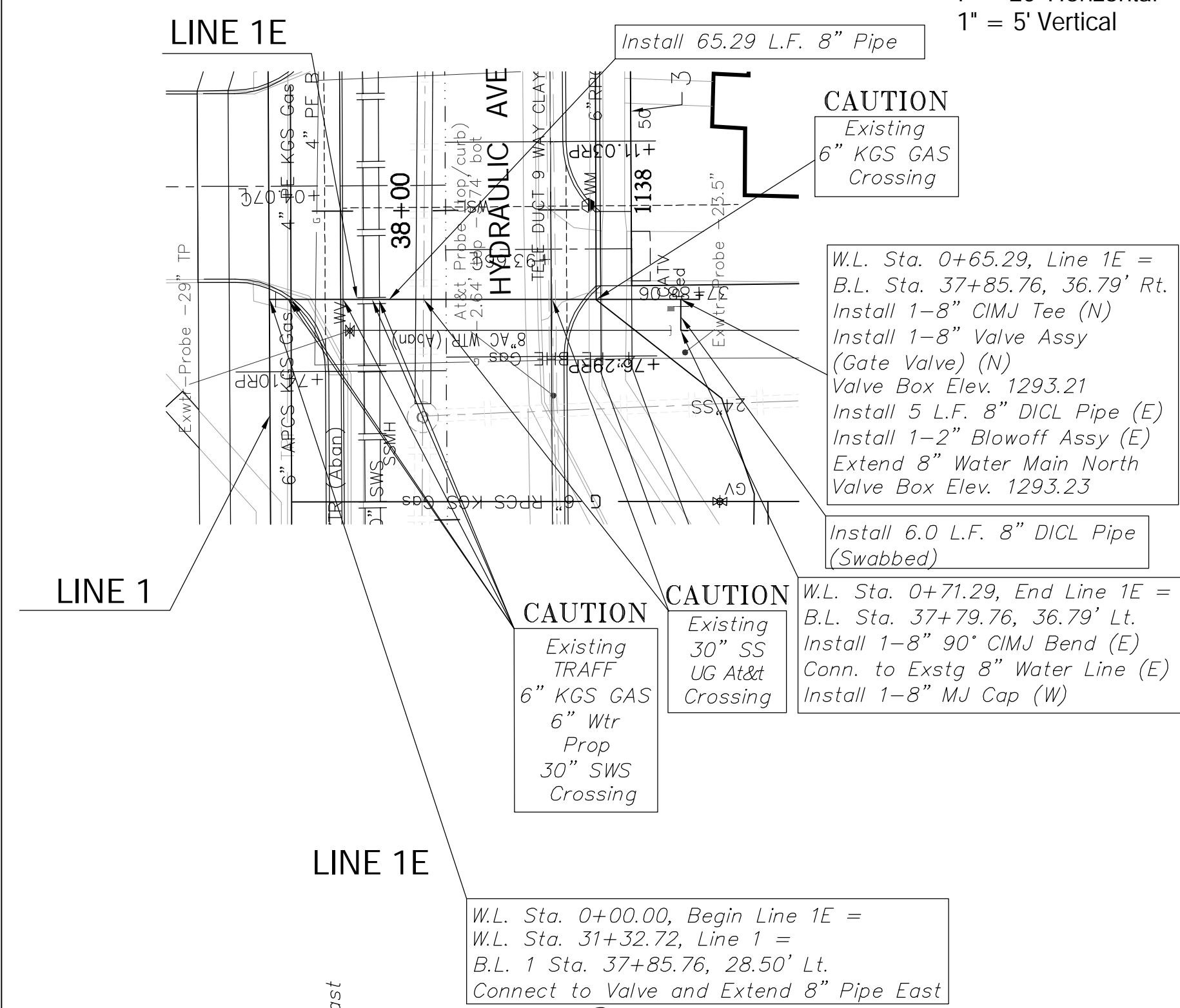


CAUTION Existing 6" KGS GAS Crossing

W.L. Sta. 0+65.29, Line 1E =
B.L. Sta. 37+85.76, 36.79' Rt.
Install 1-8" CIMJ Tee (N)
Install 1-8" Valve Assy (Gate Valve) (N)
Valve Box Elev. 1293.21
Install 5 L.F. 8" DICL Pipe (E)
Install 1-2" Blowoff Assy (E)
Extend 8" Water Main North
Valve Box Elev. 1293.23

W.L. Sta. 0+71.29, End Line 1E =
B.L. Sta. 37+79.76, 36.79' Lt.
Install 1-8" 90° CIMJ Bend (E)
Conn. to Exstg 8" Water Line (E)
Install 1-8" MJ Cap (W)

W.L. Sta. 0+00.00, Begin Line 1E =
W.L. Sta. 31+32.72, Line 1 =
B.L. 1 Sta. 37+85.76, 28.50' Lt.
Connect to Valve and Extend 8" Pipe East



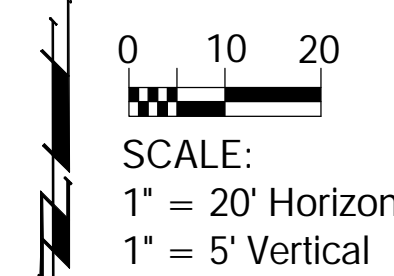
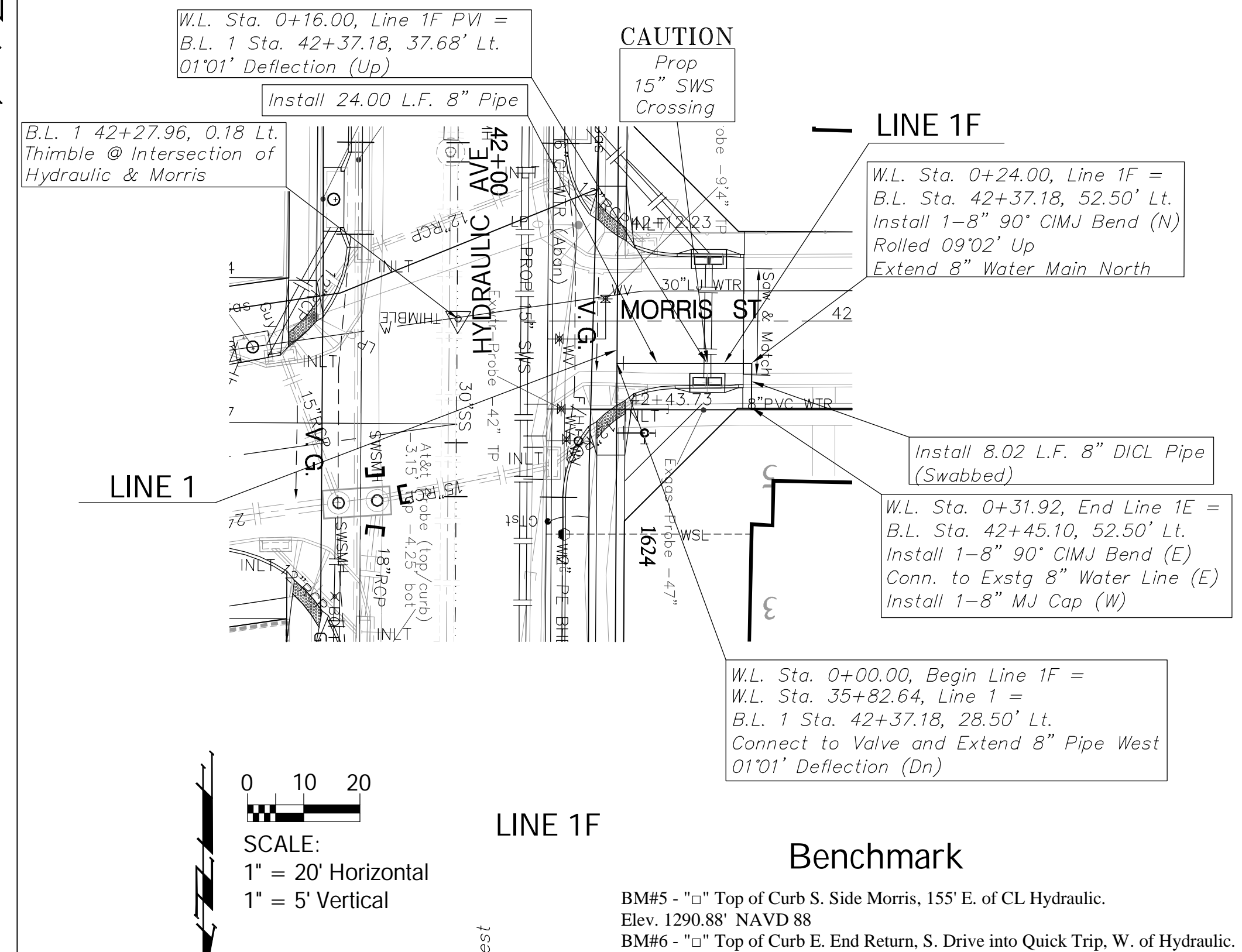
W.L. Sta. 0+16.00, Line 1F PVI =
B.L. 1 Sta. 42+37.18, 37.68' Lt.
01'01" Deflection (Up)

CAUTION Prop 15" SWS Crossing

W.L. Sta. 0+24.00, Line 1F =
B.L. Sta. 42+37.18, 52.50' Lt.
Install 1-8" 90° CIMJ Bend (N)
Rolled 09'02" Up
Extend 8" Water Main North

W.L. Sta. 0+31.92, End Line 1E =
B.L. Sta. 42+45.10, 52.50' Lt.
Install 1-8" 90° CIMJ Bend (E)
Conn. to Exstg 8" Water Line (E)
Install 1-8" MJ Cap (W)

W.L. Sta. 0+00.00, Begin Line 1F =
W.L. Sta. 35+82.64, Line 1 =
B.L. 1 Sta. 42+37.18, 28.50' Lt.
Connect to Valve and Extend 8" Pipe West
01'01" Deflection (Dn)



Benchmark
BM#5 - "□" Top of Curb S. Side Morris, 155' E. of CL Hydraulic. Elev. 1290.88" NAVD 88
BM#6 - "□" Top of Curb E. End Return, S. Drive into Quick Trip, W. of Hydraulic. Elev. 1294.16" NAVD 88
BM#7 - C.O.W. Disk N.E. Corner Lincoln and Hydraulic of Traffic Signal Pole Elev. 1293.50" NAVD 88

