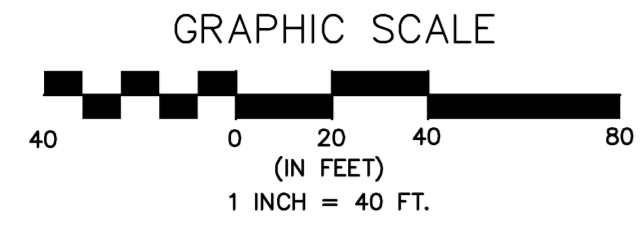
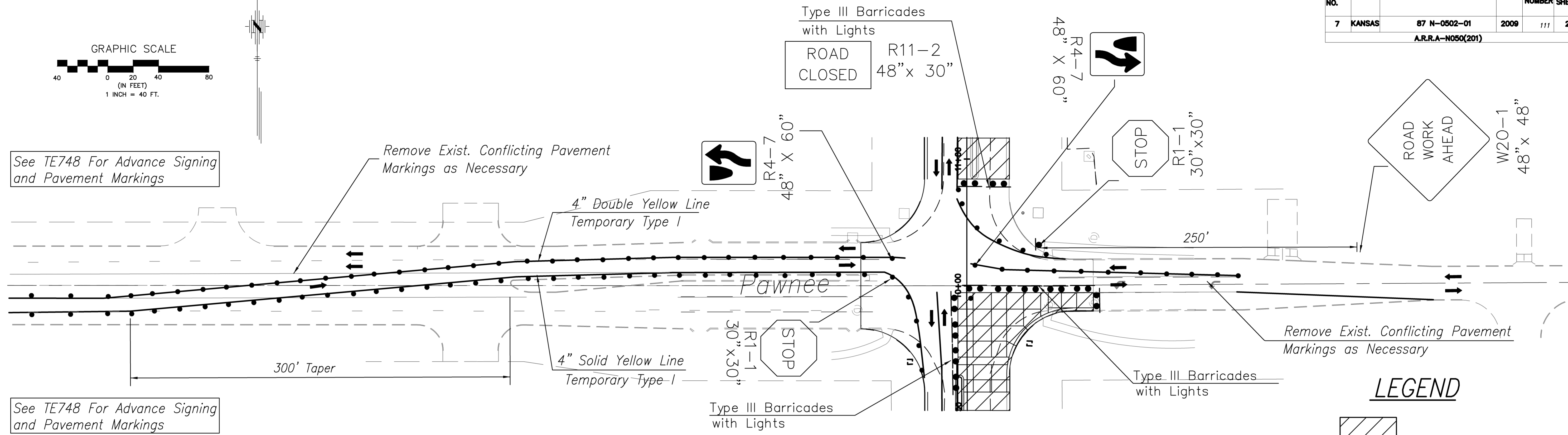


FHWA REG. NO.	STATE	PROJECT NO.:	YEAR	SHEET NUMBER	TOTAL SHEETS
7	KANSAS	87 N-0502-01	2009	111	228
A.R.R.A.-N050(201)					



See TE748 For Advance Signing and Pavement Markings

See TE748 For Advance Signing and Pavement Markings



PHASE III - PAWNEE INTERSECTION - SE QUADRANT

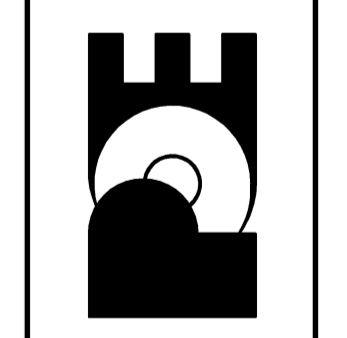
LEGEND

- Workzone
- Channelizing Device

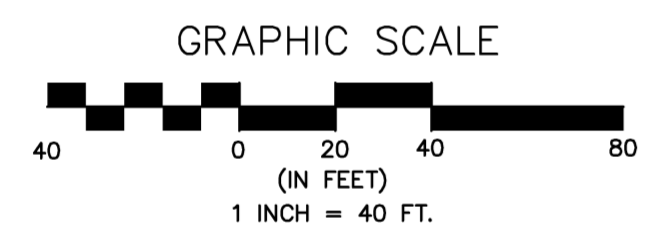
No.	Date	By	Approved	Revision

MAIZE ROAD
WEST KELLOGG AVE. TO PAWNEE AVE.
CITY OF WICHITA, KANSAS
PHASE III - TRAFFIC CONTROL

POE & ASSOCIATES, INC.
CONSULTING ENGINEERS
5940 E Central, Suite 200 • Wichita, KS 67208-0242
Phone 316/685-4114 • FAX 316/685-4444

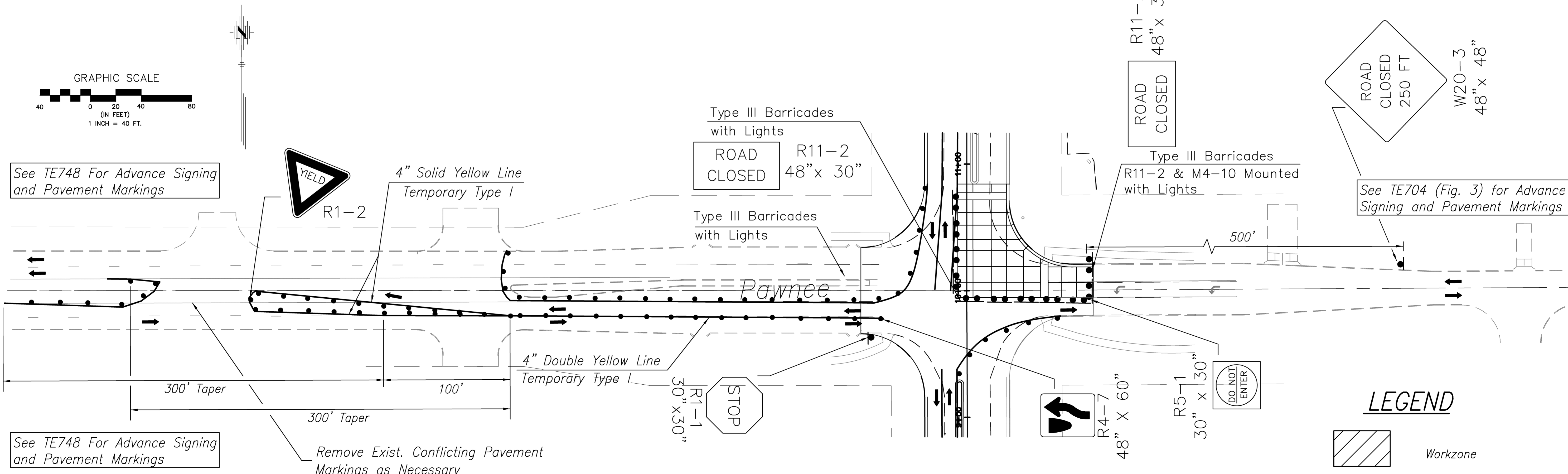


Engineer: M. THOMPSON
Designer: P. FERGUSON
KDOT Job No.: 87 N-0502-01 Proj. Job No.: 1935
Date: SEPT 2009



See TE748 For Advance Signing and Pavement Markings

See TE748 For Advance Signing and Pavement Markings



PHASE III - PAWNEE INTERSECTION - NE QUADRANT

LEGEND

- Workzone
- Channelizing Device