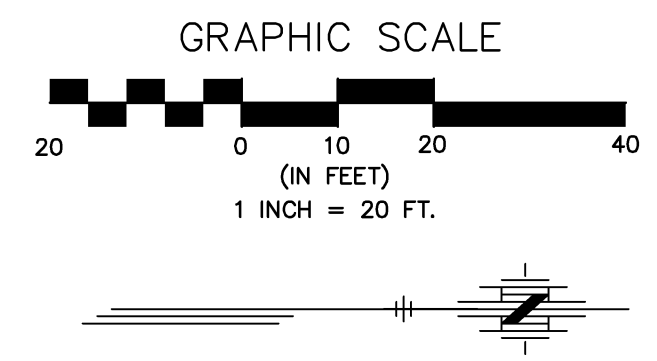
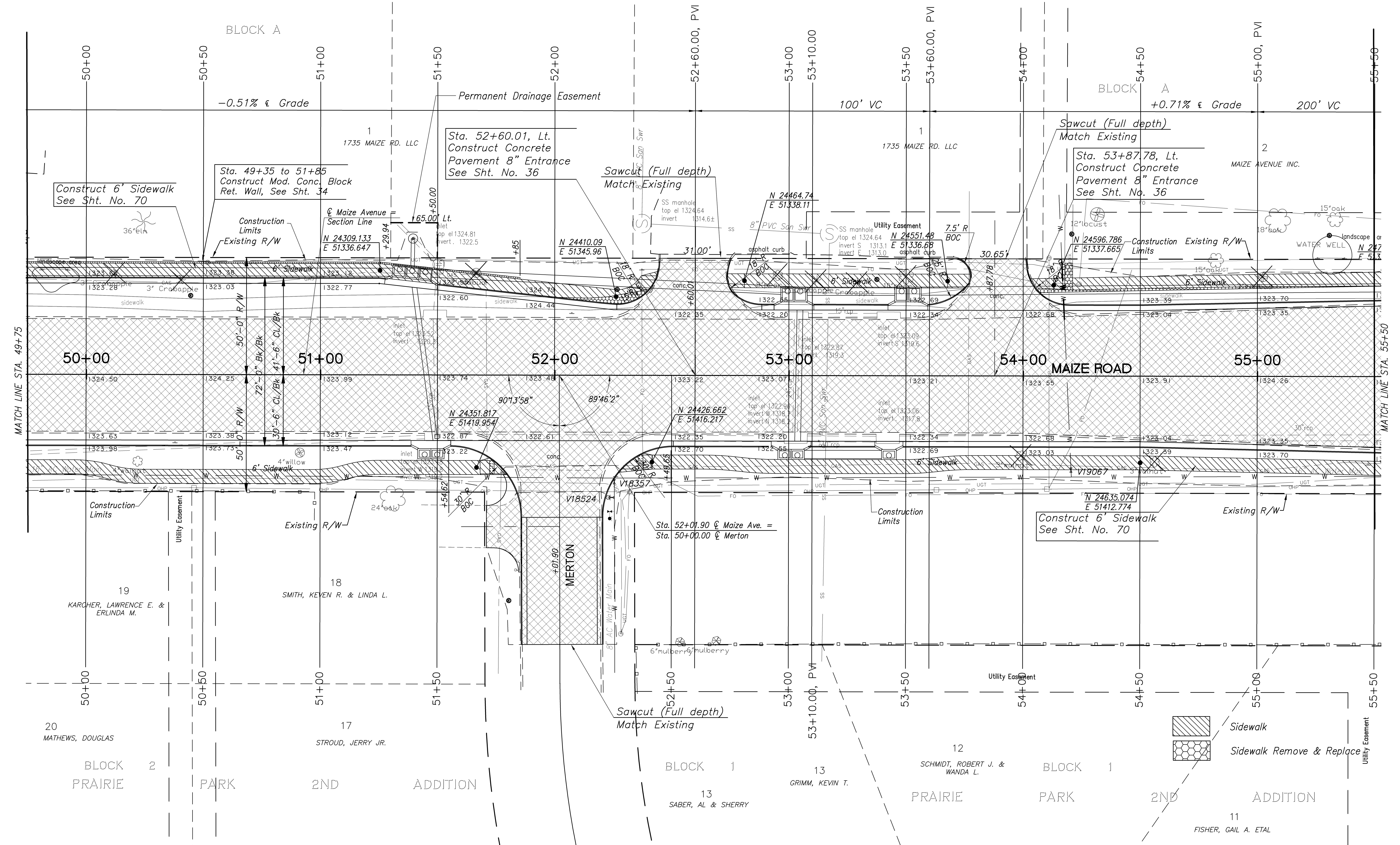


FHWA REG. NO.	STATE	PROJECT NO.:	YEAR	SHEET NUMBER	TOTAL SHEETS
7	KANSAS	87 N-0502-01	2009	14	226
A.R.R.A-N050(201)					



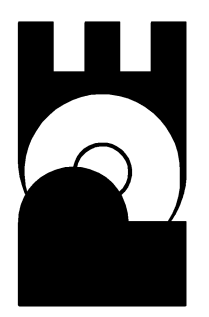
MAIZE AVENUE 2ND ADDITION



No.	Date	By	Approved	Revision

MAIZE ROAD  
 WEST KELLOGG AVE. TO PANMEE AVE.  
 CITY OF WICHITA, KANSAS  
 PAVEMENT PLAN 49+75 TO 55+00

POE & ASSOCIATES, INC.  
 CONSULTING ENGINEERS  
 5940 E. Central, Suite 200 • Wichita, KS 67208-4242  
 Phone: 316.685-4114 • FAX: 316.685-4444



FINAL  
 Engineer: P. FERGUSON  
 Designer: K. WARREN  
 KDOT Job No.: 87 N-0502-01 Poe Job No.: 1935  
 Date: SEPTEMBER 2009  
 Sheet 14 of 226