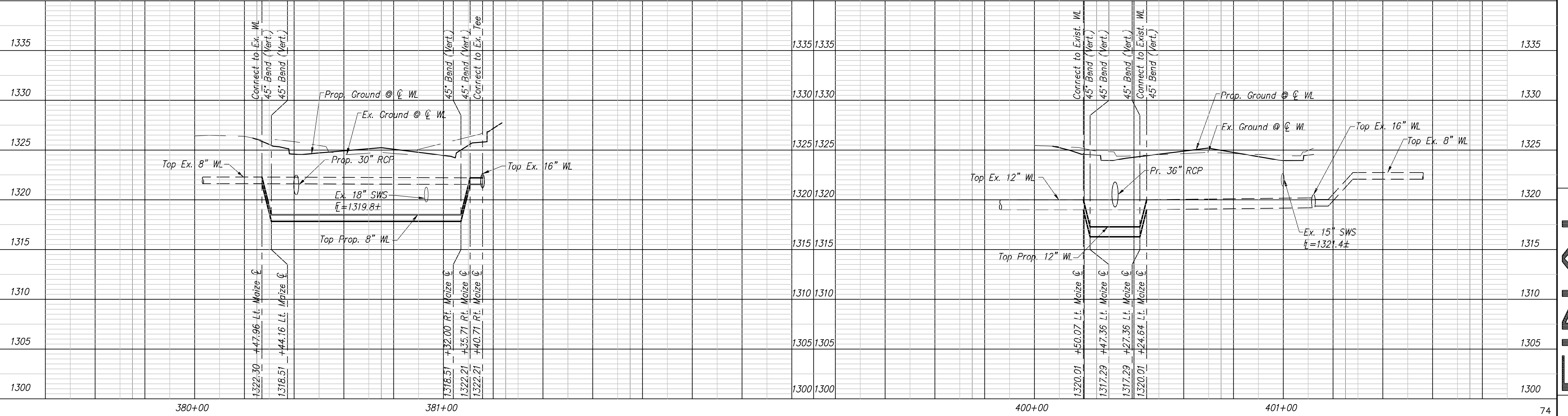
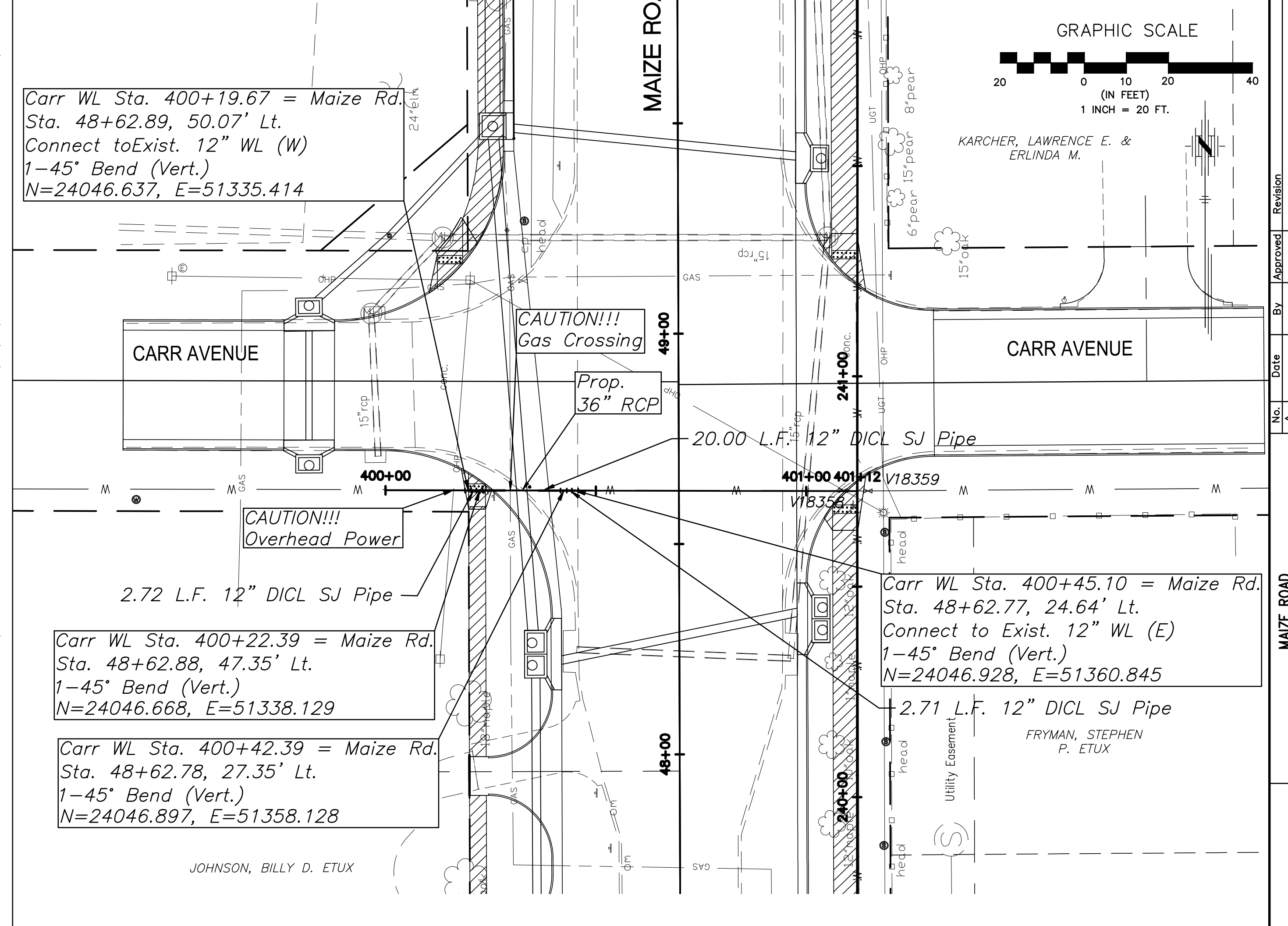
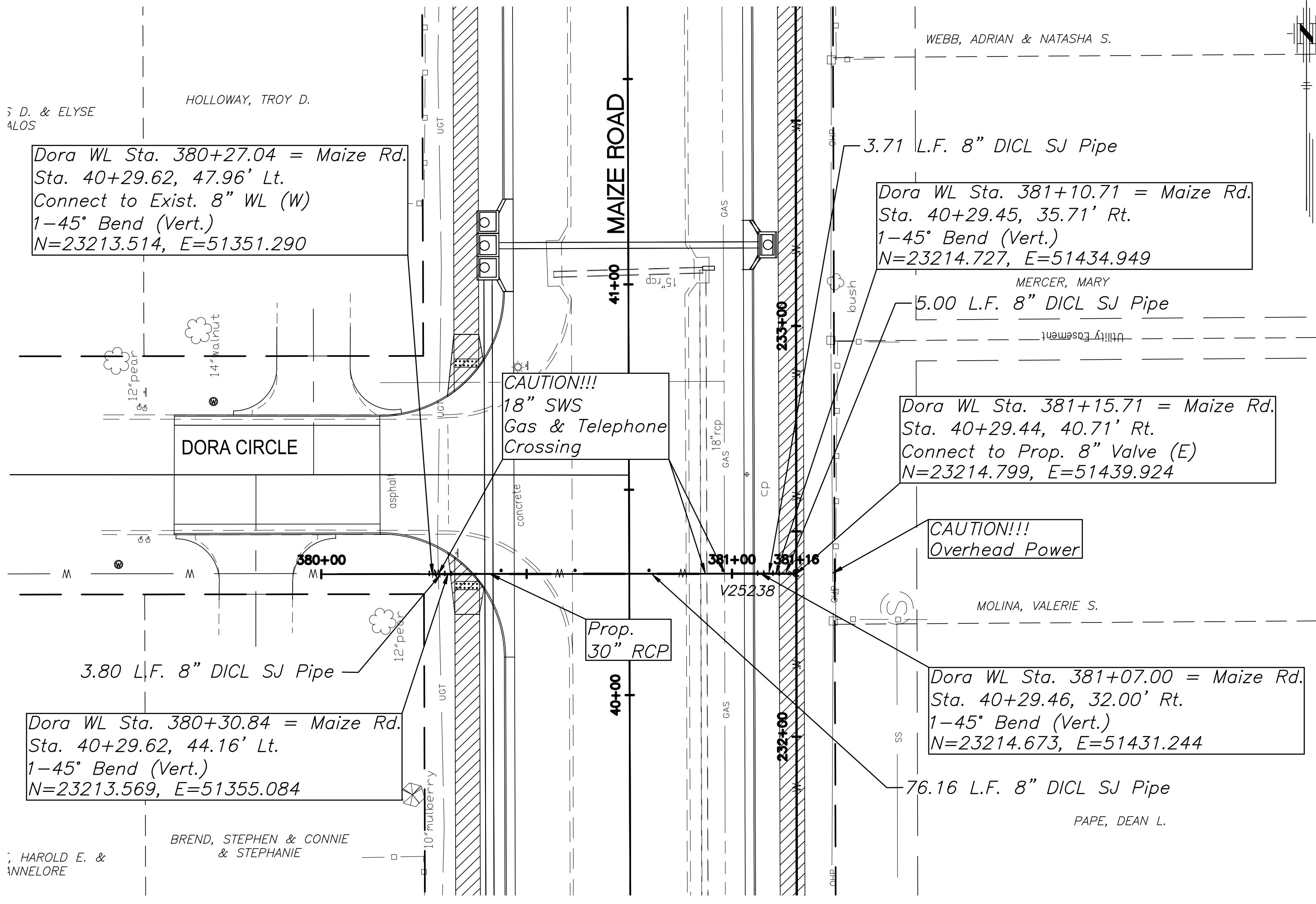
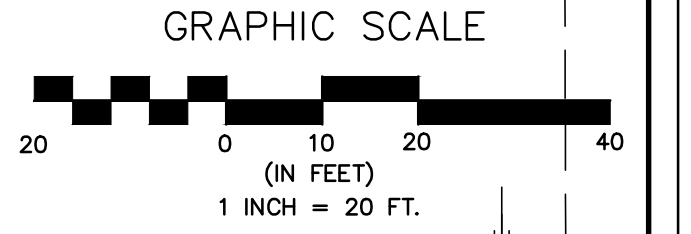


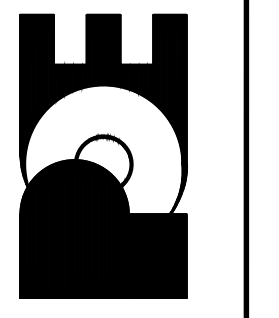
FHWA REG. NO.	STATE	PROJECT NO.:	YEAR	SHEET NUMBER	TOTAL SHEETS
7	KANSAS	87 N-0502-01	2009	WL14	WL15



No.	Date	By	Approved	Revision

MAIZE ROAD
 WEST KELLOGG AVE. TO PANMEE AVE.
 CITY OF WICHITA, KANSAS
 WATER LINE P & P Crossing
 2324-36.59 & 2354-40.18

POE & ASSOCIATES, INC.
 CONSULTING ENGINEERS
 5940 E. Central, Suite 200 • Wichita, KS 67208-4242
 Phone 316/685-4114 • FAX 316/685-4444



Engineer: P. FERGUSON
 Designer: K. WARREN
 KDOT Job No.: 87 N-0502-01 Poe Job No.: 1935
 Date: SEPTEMBER 2009