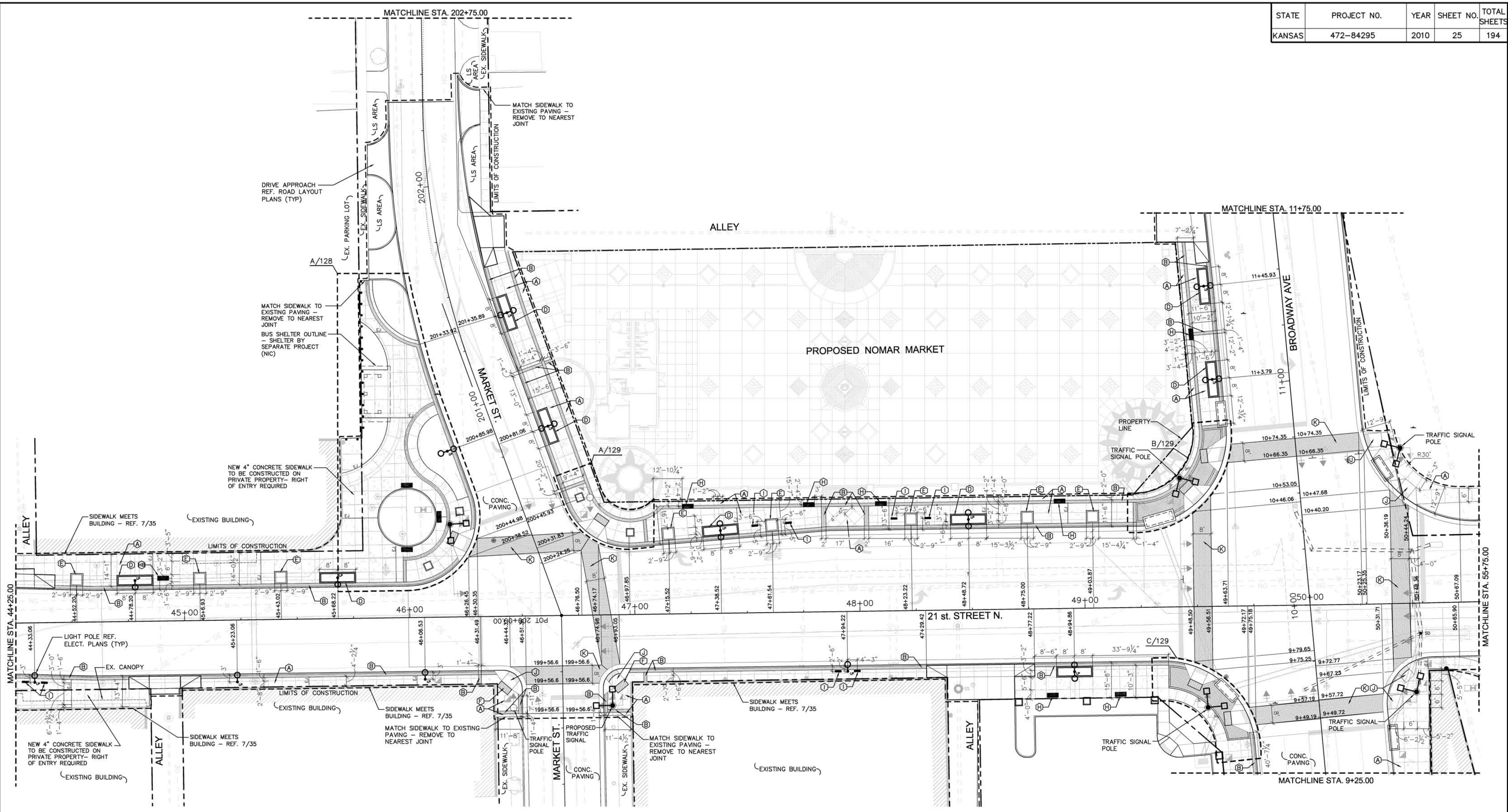


STATE	PROJECT NO.	YEAR	SHEET NO.	TOTAL SHEETS
KANSAS	472-84295	2010	25	194

BY	DATE
REFERENCES NOTED	REFERENCES CHECKED



A 21ST. STREETSCAPE IMPROVEMENT PLAN

STA. 44+25.00 - STA. 55+75.00

1"=20'-0"

REFERENCE	DETAIL	DETAIL REFERENCE	DETAIL	DETAIL REFERENCE	
(A)	4" PLAIN CONCRETE SIDEWALK	1,2/34, 7/35	(I)	BIKE RACK	5/35
(B)	16" CLAY PAVER BAND	B,C,F/30	(J)	ADA ACCESS RAMP	SHEETS 31,32,33
(C)	PAVERS ON CONCRETE	C/30	(K)	CROSSWALK PAVER PATTERN	A,E/30
(D)	LIGHT POLE PLANTER	1/35	(L)	SECONDARY CAST STONE PANEL	4/34
(E)	TREE WELL PLANTER	7/34	(M)	2" INTEGRAL CONCRETE CURB	3/34
(F)	PRIMARY CAST STONE PANEL	5/34	(N)	6" INTEGRAL CONCRETE CURB	1/28
(G)	DISTRICT MONUMENT	6/34	(O)	6" STEEL BOLLARD	2/28
(H)	BENCH	3/35	(P)	PAVER ISLAND	D/30
(I)	BENCH BACKLESS	4/35			

LAW/KINGDON, INC.
ARCHITECTS, ENGINEERS, PLANNERS
& LANDSCAPE ARCHITECTS

CITY OF WICHITA
21ST STREET NORTH &
BROADWAY AVENUE INTERSECTION

SITE ARCHITECTURAL PLAN

WICHITA, KANSAS

PROJECT NO. 472-84295

DATE

DESIGNED: J.A.B./W.A.W.

CHECKED: J.A.B.

DRAWN: W.A.W.

DATE: 01-11-2010