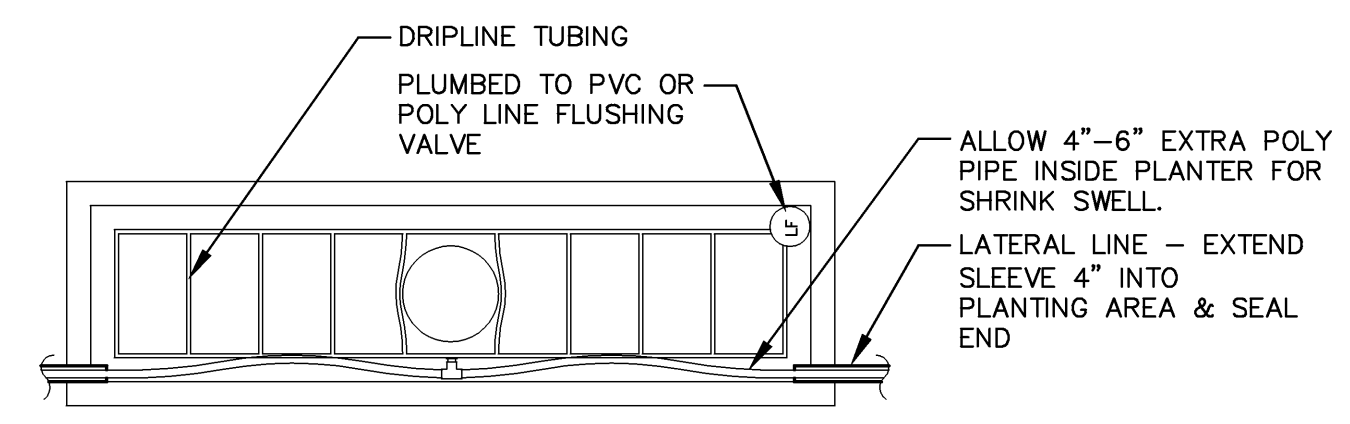
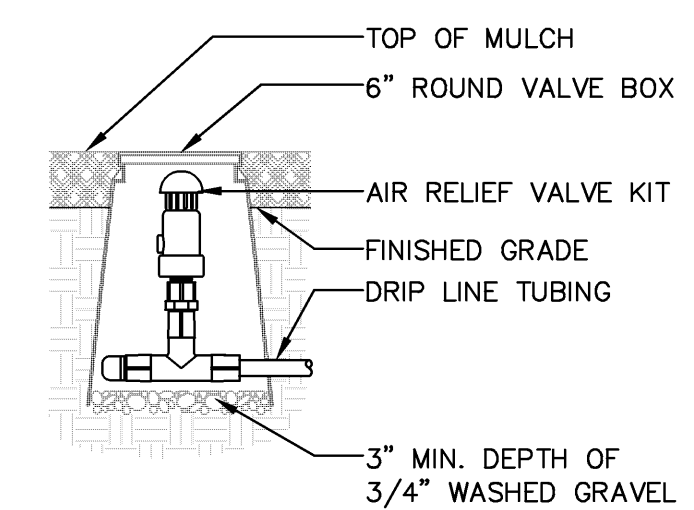


WHERE REQUIRED ADD PRESSURE COMPENSATING EMITTERS TO DRIP TUBING TO IRRIGATE PLANT MATERIALS. DIRECT WATER THROUGH MICRO-TUBING TO BASE OF PLANT.

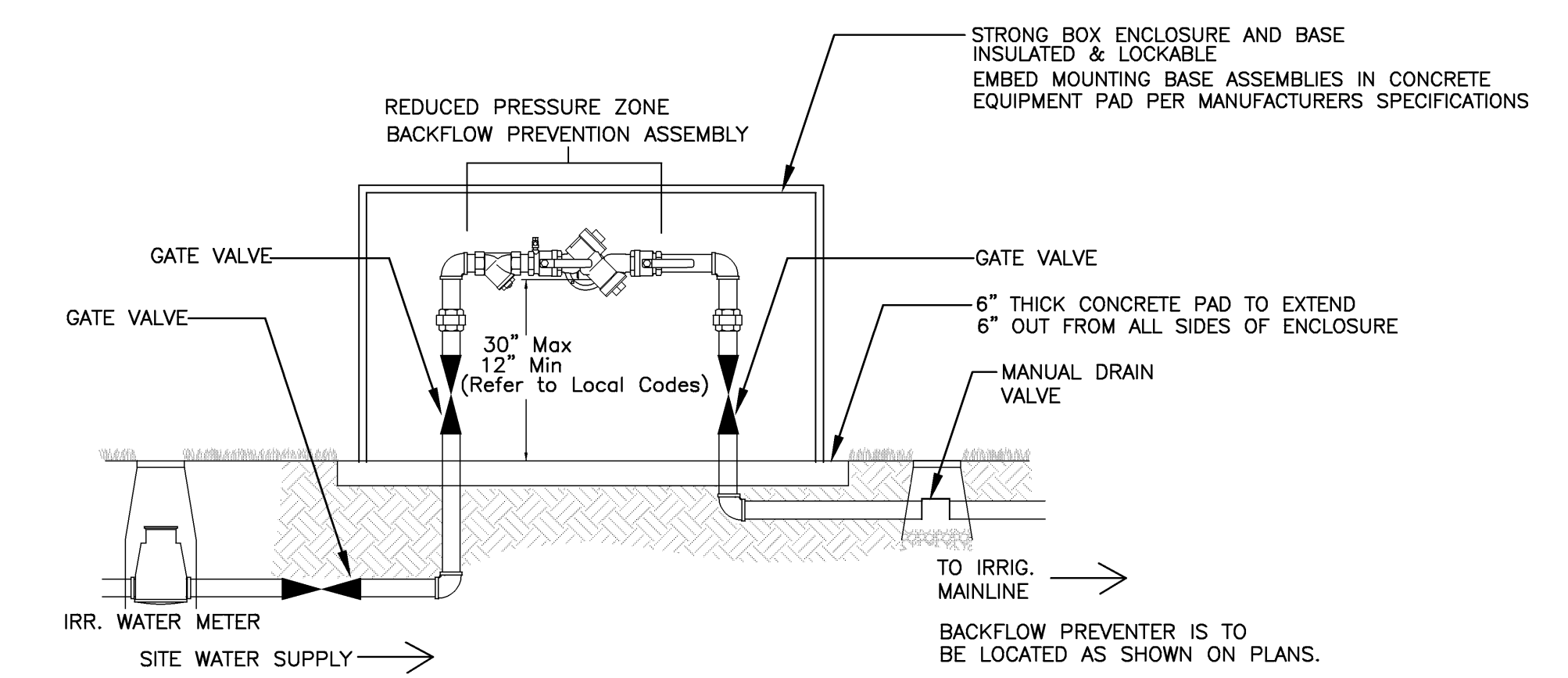
1 DRIP LINE START CONNECTION
1/2" = 1'-0"



4 LIGHT POLE PLANTER IRR.
1/4" = 1'-0"

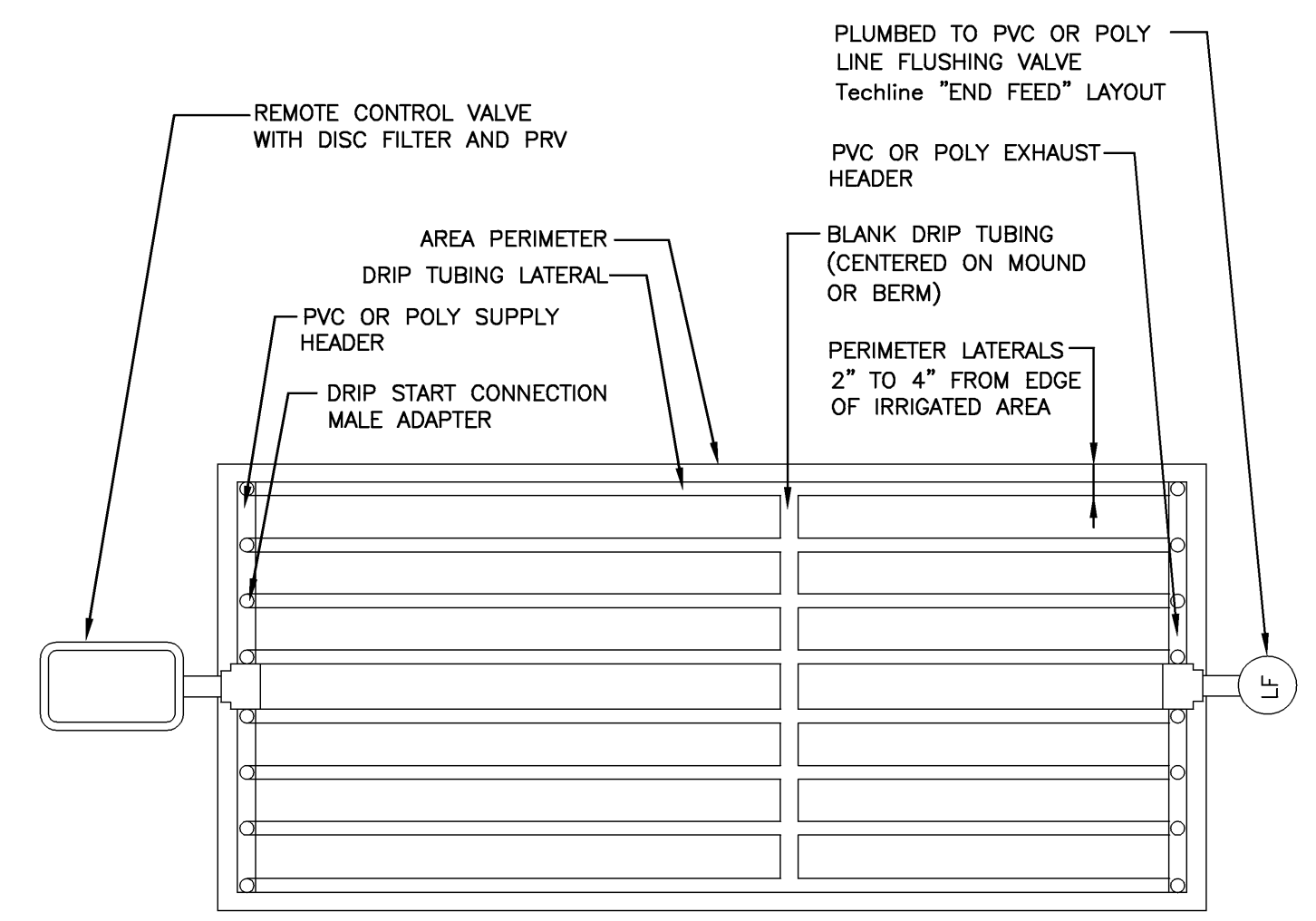


5 AIR RELIEF VALVE
1 1/2" = 1'-0"

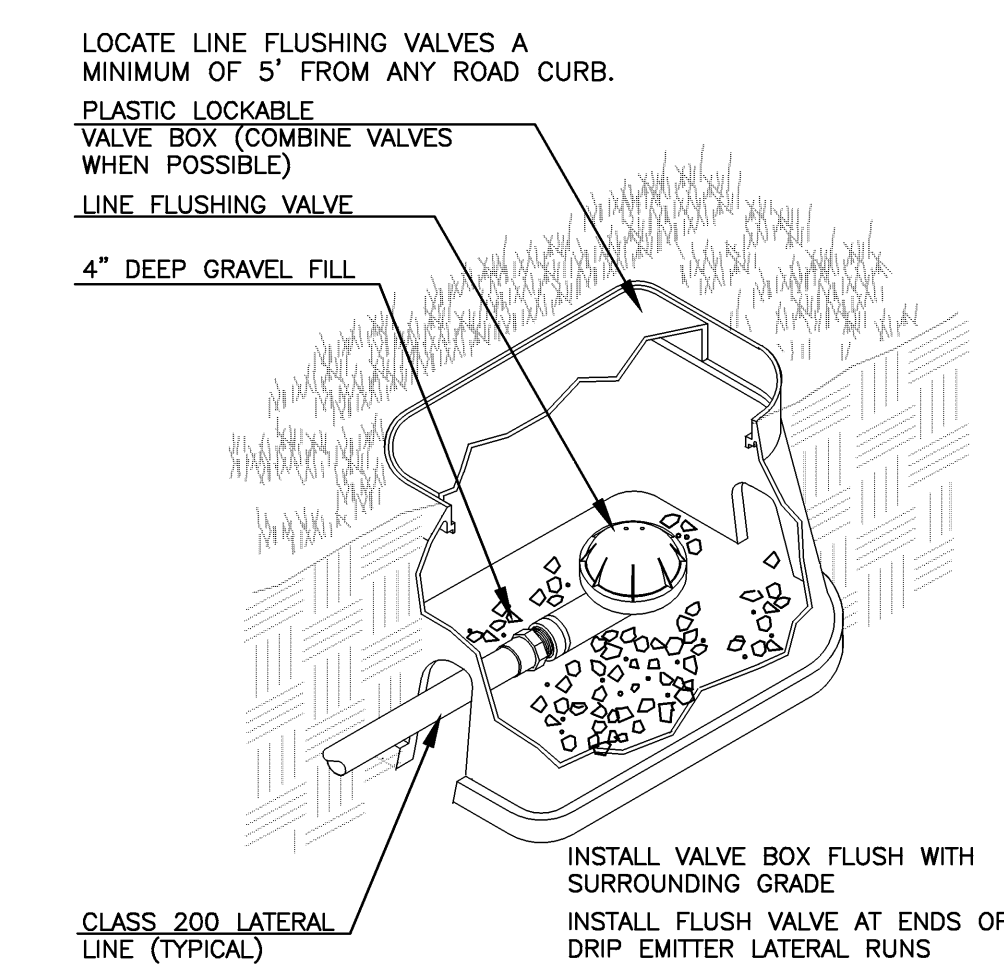


8 REDUCED PRESSURE ZONE BACKFLOW PREVENTER
LOCATIONS AS SHOWN ON IRRIGATION PLAN
NTS

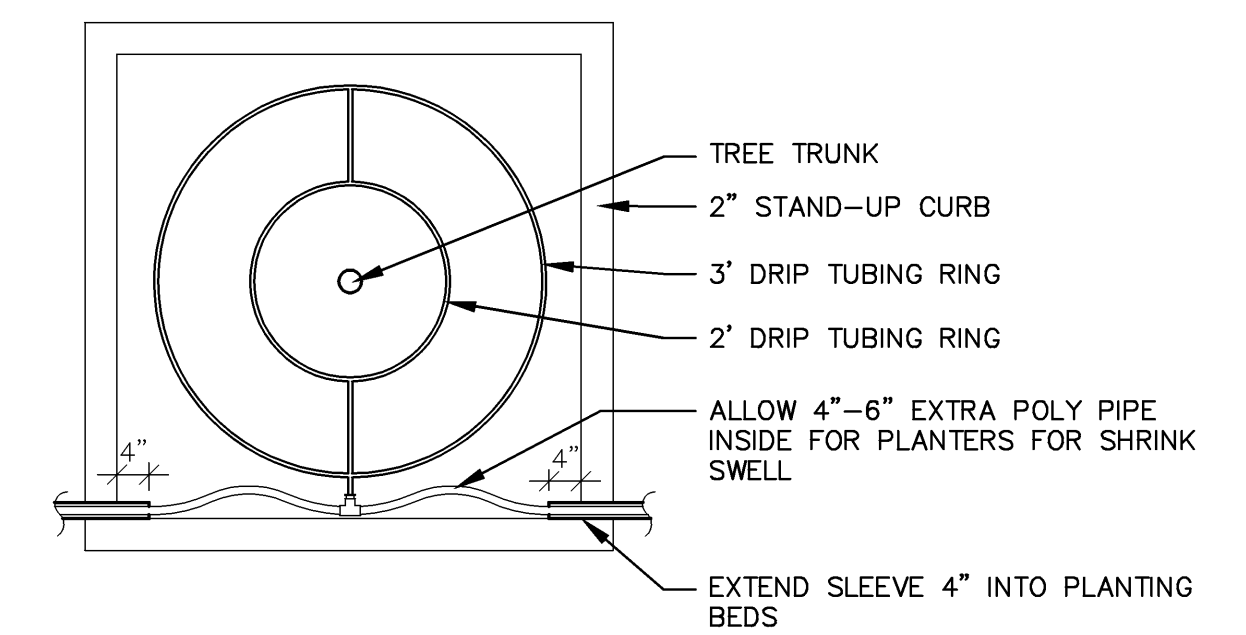
DATE	
BY	
REFERENCES NOTED	
REFERENCES CHECKED	



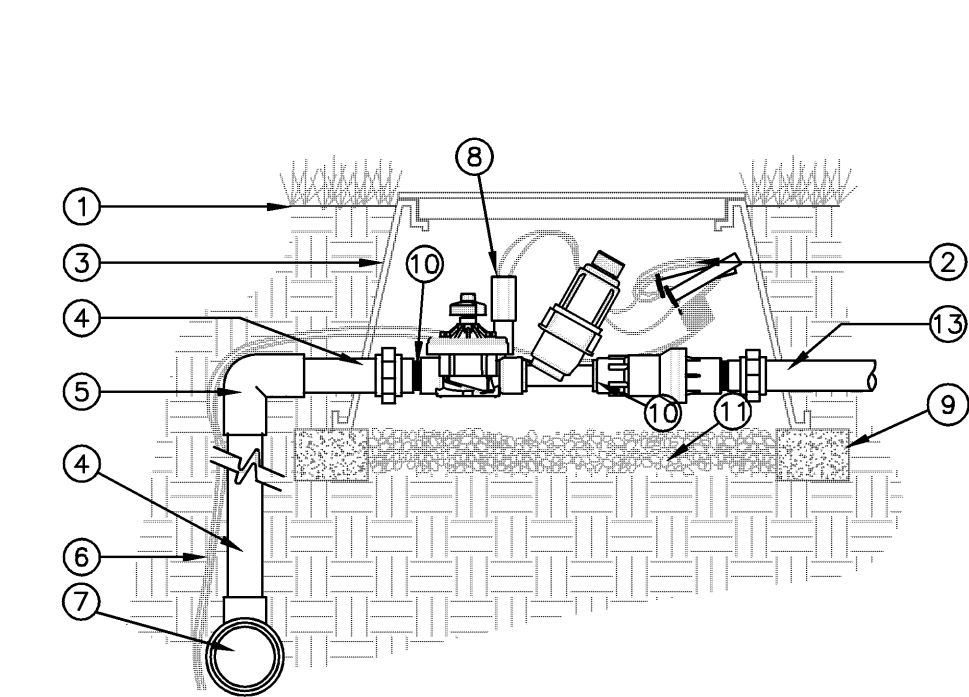
2 TYP. DRIP LINE END FEED LAYOUT
NTS



6 LINE FLUSHING VALVE
DRIPEMITTER ZONES ONLY
NTS

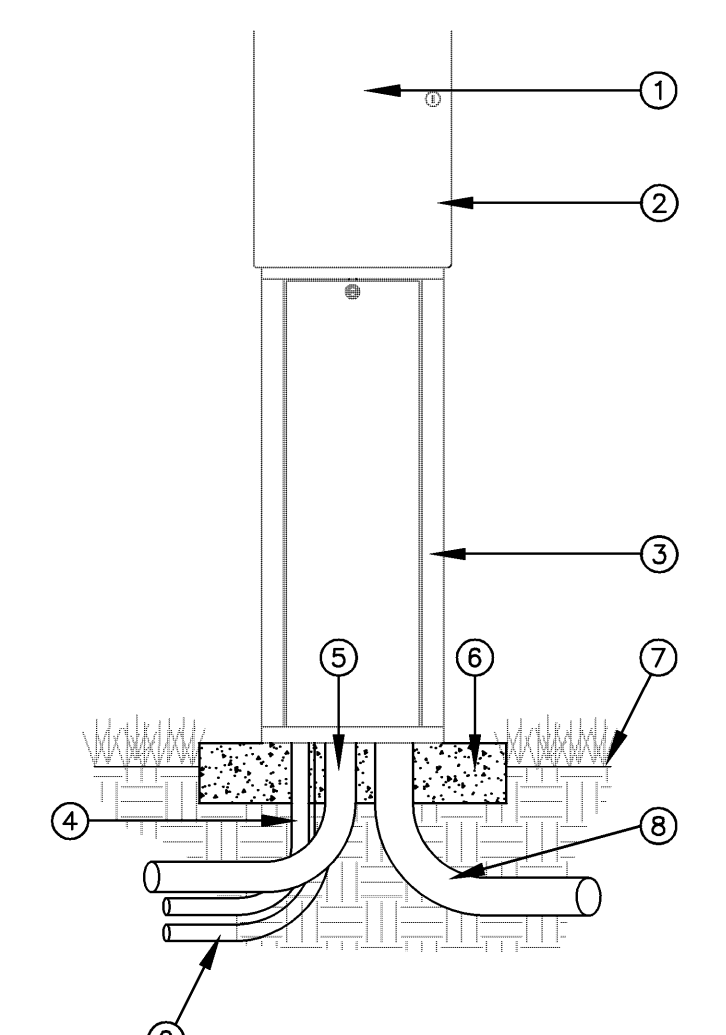


9 TREE WELL TYPICAL IRR. DETAIL
1/2" = 1'-0"

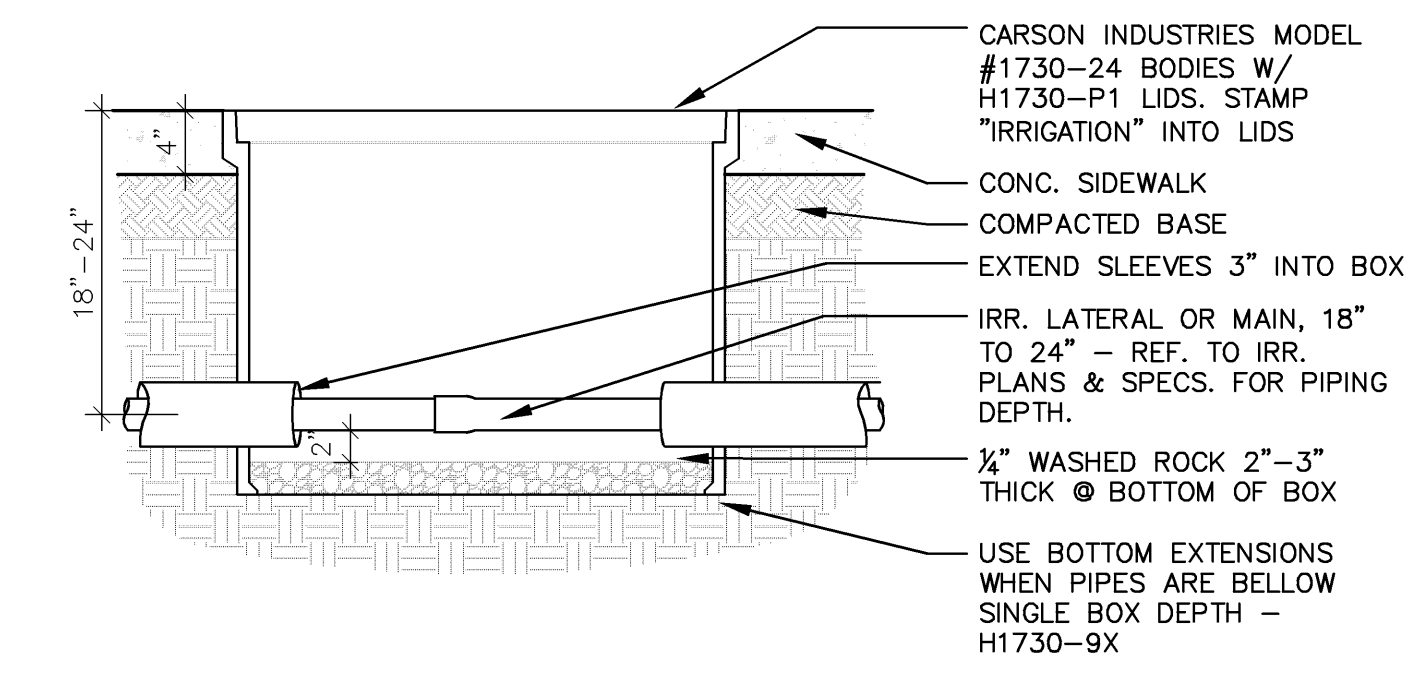


- 1 FINISHED GRADE
- 2 CONTROL WIRES W/ 36" SERVICE COIL & WATER PROOF WIRE CONNECTIONS - DBY6 OR EQUAL
- 3 PLASTIC LOCKABLE VALVE BOX
- 4 PVC MAINLINE LENGTH AS REQUIRED
- 5 PVC SCH 40 ELL
- 6 CONTROL WIRES TO CONTROLLER
- 7 PVC MAINLINE
- 8 REMOTE CONTROL VALVE: HUNTER ICZ-10140
- 9 BRICK (1 OF 4)
- 10 PVC SCH 40 MALE ADAPTOR
- 11 3" MIN. DEPTH OF 3/4" WALSHED GRAVEL
- 12 PVC LATERAL PIPE

3 REMOTE CONTROL VALVE
1/2" = 1'-0"



7 IRRIGATION CONTROLLER W/ PEDISTAL
NTS



10 GFRC VALVE BOX IN SIDEWALK
1" = 1'-0"

<p>LAW/KINGDON, INC. ARCHITECTS, ENGINEERS, PLANNERS & LANDSCAPE ARCHITECTS</p>	<p>CITY OF WICHITA 21ST STREET NORTH & BROADWAY AVENUE INTERSECTION</p> <p>IRRIGATION DETAILS</p> <p>WICHITA, KANSAS</p>
	<p>DATE: 01-11-2010</p> <p>DESIGNED: J.A.B./W.A.W</p> <p>CHECKED: J.A.B</p> <p>DRAWN: W.A.W</p>