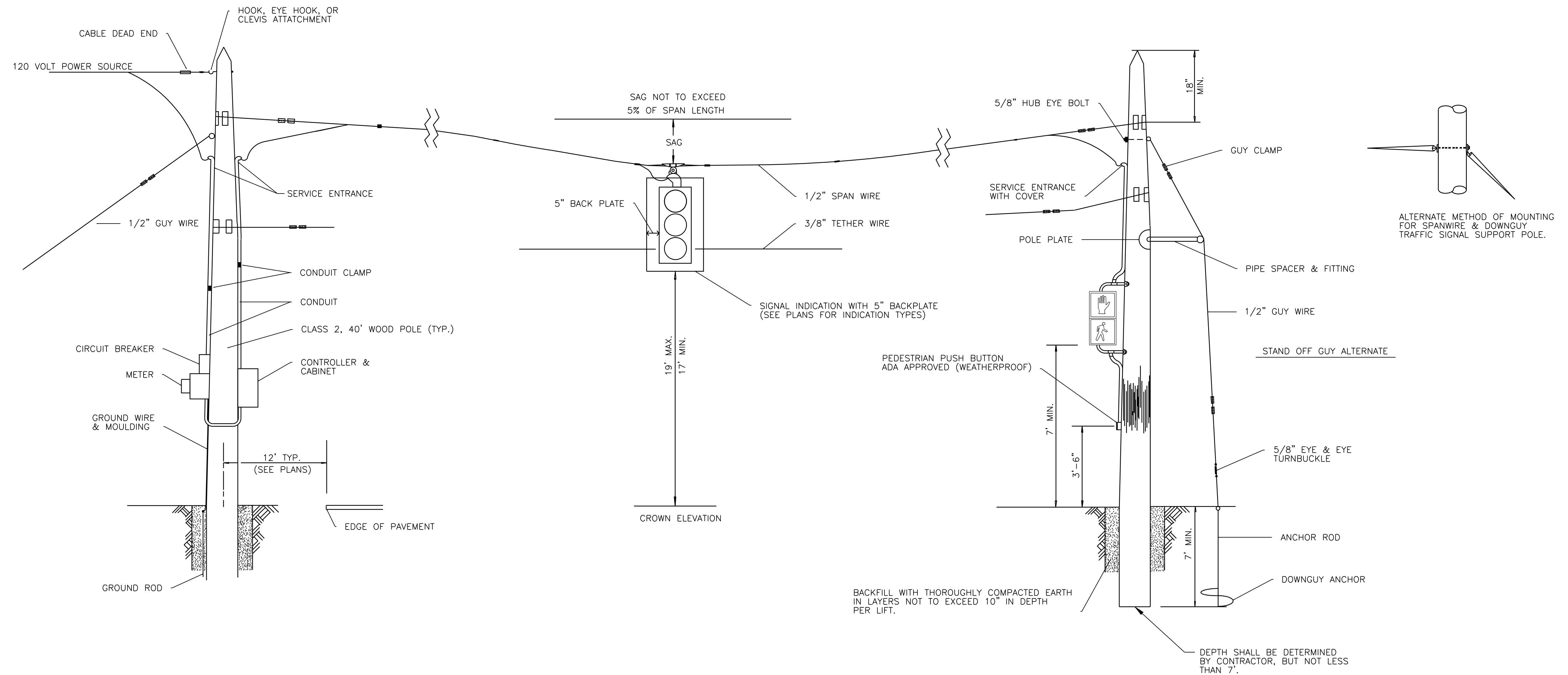


STATE	PROJECT NO.	YEAR	SHEET NO.	TOTAL SHEETS
KANSAS	472-84295	2010	90	194



**GENERAL NOTES**

THE ENGINEER IN CHARGE OF CONSTRUCTION WILL NEED TO APPROVE ALL LOCATIONS FOR TRAFFIC SIGNAL POLES TO BE INSTALLED. FINAL POSITIONS & AIMING OF SIGNAL FACES TO BE DETERMINED IN THE FIELD.

THE TRAFFIC SIGNAL SYSTEM SHALL CONFORM TO AND BE OPERATED ACCORDING TO THE REQUIREMENTS OF THE CURRENT M.U.T.C.D.

CONTACT LOCAL UTILITY COMPANIES TO ADVISE THEM OF INSTALLATION AND COORDINATE POWER HOOK-UP.

ALL WIRING INSTALLED SHALL CONFORM TO THE NATIONAL ELECTRICAL CODE AND LOCAL ORDINANCES & REQUIREMENTS.

THE POWER SUPPLY AND THE OPERATION & MAINTENANCE OF THE SIGNAL SYSTEM SHALL BE THE RESPONSIBILITY OF THE CONTRACTOR.

THE CONTRACTOR SHALL WORK WITH THE ENGINEER TO DEVELOP SIGNAL TIMINGS BASED OFF CONSTRUCTION ZONE TRAFFIC THROUGHOUT CONSTRUCTION. THIS MAY INCLUDE PERIODIC ADJUSTMENTS OF TIMINGS, AND ADJUSTMENTS FOR CONSTRUCTION PHASING.

THE TEMPORARY TRAFFIC SIGNAL SYSTEM SHALL BE COMPLETE AND THE CONTRACTOR SHALL FURNISH AND INSTALL ALL EQUIPMENT AND MATERIALS NECESSARY FOR THE SATISFACTORY OPERATION OF ELECTRICAL APPARATUS AND FOR COMPLETE OPERATION OF THE TRAFFIC SIGNAL SYSTEM WHETHER SPECIFICALLY MENTIONED OR NOT. THIS MAY INCLUDE MULTIPLE SET-UPS TO MATCH EXISTING TRAFFIC CONTROL PHASING. THIS SHALL NOT BE PAID FOR DIRECTLY BUT SHALL BE SUBSIDIARY TO THE BID ITEM "TRAFFIC CONTROL".

WHERE TEMPORARY SIGNAL POLES ARE LOCATED IN PROPOSED SIDEWALK, BLOCKOUTS SHALL BE MADE AROUND TEMPORARY POLES DURING SIDEWALK CONSTRUCTION AND FILLED WITH TEMPORARY SURFACING AS APPROVED BY THE ENGINEER. CONSTRUCT BLOCKOUTS TO NEAREST JOINTS ADJACENT TO POLE. AFTER PROPOSED SIGNAL IMPROVEMENTS ARE COMPLETED, THE TEMPORARY POLE AND SURFACE MATERIAL SHALL BE REMOVED SO THAT SIDEWALK IMPROVEMENTS CAN BE COMPLETED. THIS WORK SHALL NOT BE PAID FOR DIRECTLY BUT SHALL BE SUBSIDIARY TO THE BID ITEM "TRAFFIC CONTROL".

DATE	
BY	
REFERENCES NOTED	
REFERENCES CHECKED	

Plotted By : danavarrro  
 File : g:\W050001\ROAD\001\trps.sht  
 Plotted : 1/8/2010

CITY OF WICHITA	
21ST STREET NORTH & BROADWAY AVENUE INTERSECTION	
TEMPORARY TRAFFIC SIGNAL DETAILS	
WICHITA, KANSAS	
DESIGNED	DRAWN
M.D.B.	D.A.N.
CHECKED	DATE
B.A.L.	1/8/2010

TranSystems