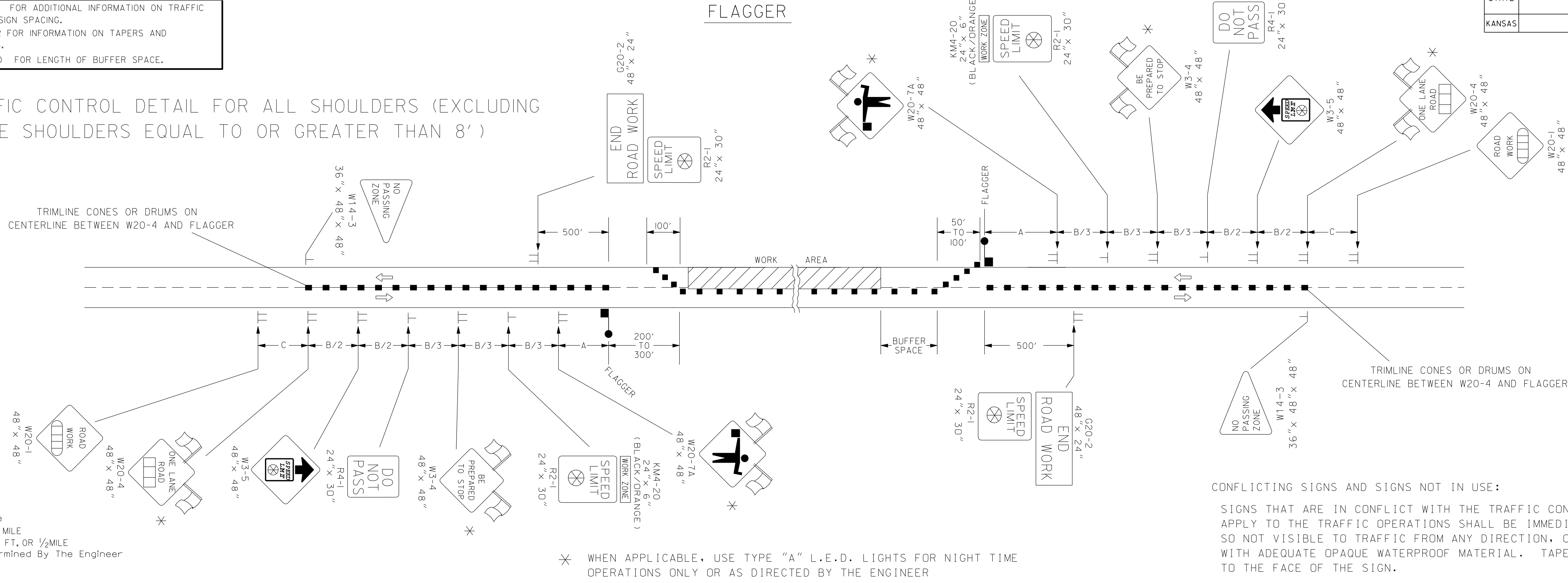


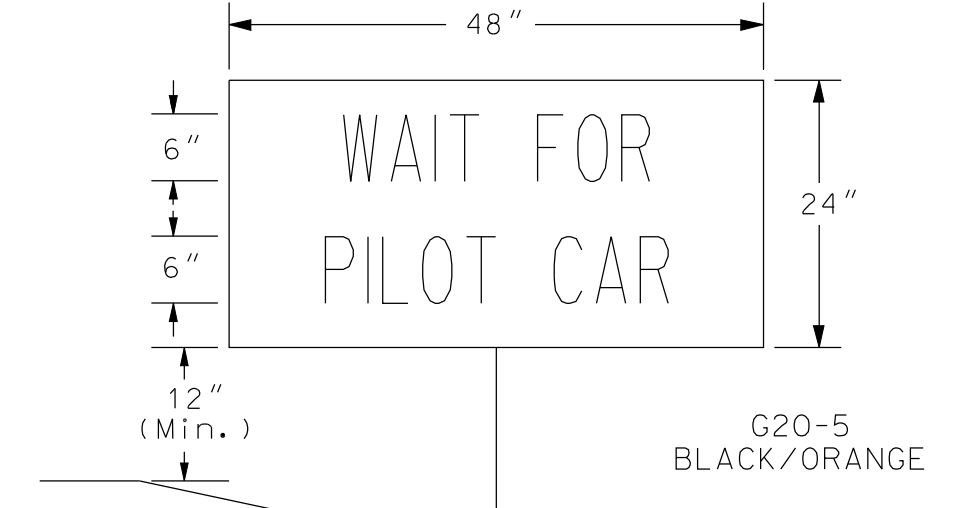
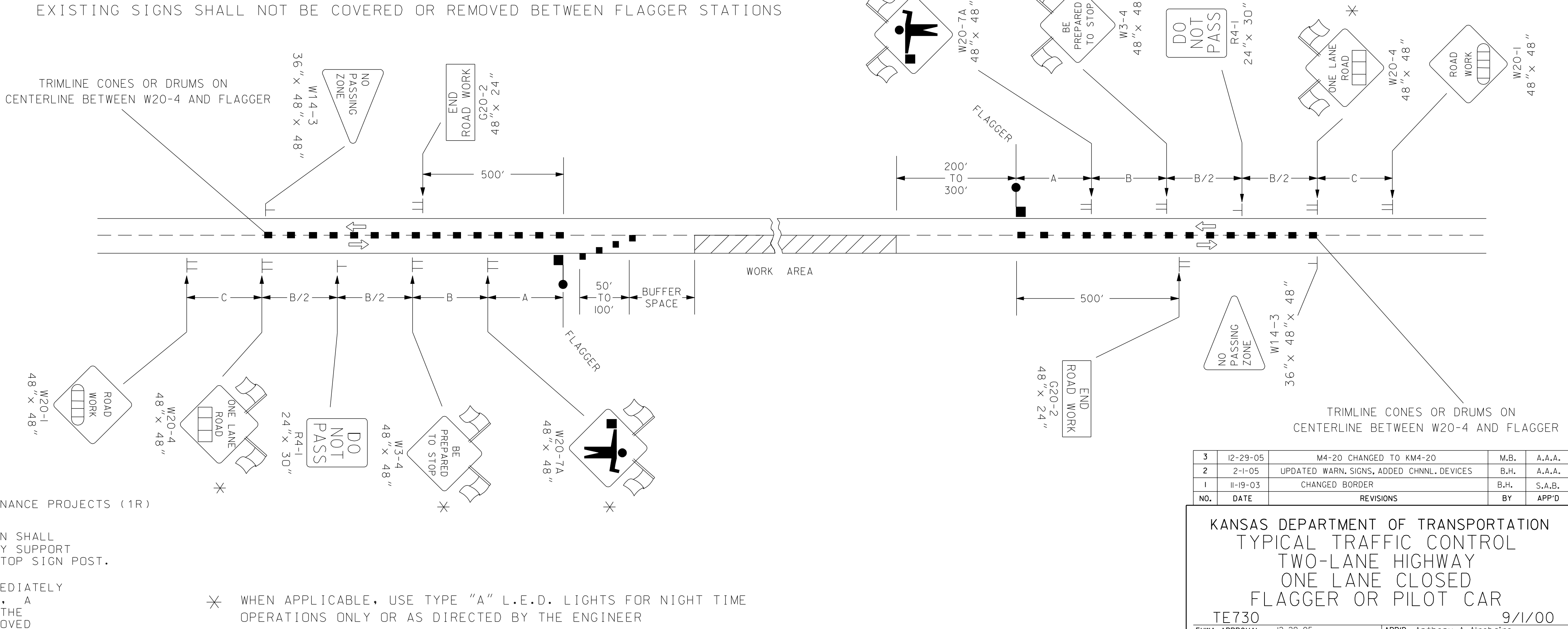
STATE	PROJECT NO.	YEAR	SHEET NO.	TOTAL SHEETS
KANSAS	472-84295	2010	95	194

REFER TO STD. TET10 FOR ADDITIONAL INFORMATION ON TRAFFIC CONTROL SIGNS AND SIGN SPACING.
 REFER TO STD. TET02 FOR INFORMATION ON TAPERS AND CHANNELIZING DEVICES.
 REFER TO STD. TET00 FOR LENGTH OF BUFFER SPACE.

APPLY TRAFFIC CONTROL DETAIL FOR ALL SHOULDERS (EXCLUDING CONCRETE SHOULDERS EQUAL TO OR GREATER THAN 8')

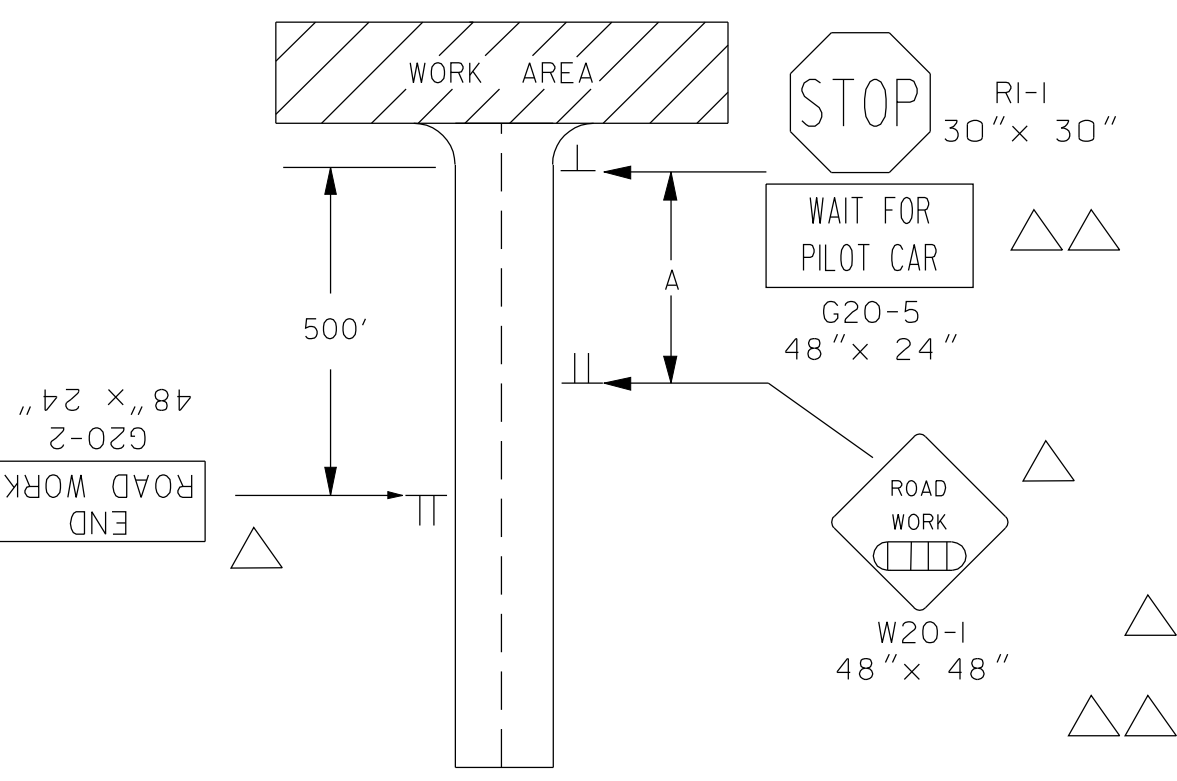


FLAGGER AND PILOT CAR



NOTE:
 PLACE A FLAGGER AT ALL HIGHWAY AND MAJOR COLLECTOR INTERSECTIONS IN THE WORK AREA. THE NEED FOR A FLAGGER AT A MINOR SIDE ROAD INTERSECTION SHALL BE DETERMINED BY THE ENGINEER. A SINGLE FLAGGER AT EACH INTERSECTION IS SUBSIDIARY TO OTHER ITEMS. IF REQUESTED BY THE ENGINEER, EACH ADDITIONAL FLAGGER WILL BE MEASURED AND PAID FOR EACH HOUR THEY ARE REQUIRED. PLACE A W20-7A (FLAGGER SYMBOL) SIGN ON EACH SIDE ROAD APPROACH THAT IS CONTROLLED BY A FLAGGER.

TYPICAL SIGNING FOR A MINOR SIDE ROAD APPROACH TO WORK AREA WITHOUT A FLAGGER



△ NOT REQUIRED ON SUBSTANTIAL MAINTENANCE PROJECTS (1R)

△△ THE G20-5 (WAIT FOR PILOT CAR) SIGN SHALL BE MOUNTED ON AN APPROVED TEMPORARY SUPPORT AND NOT ATTACHED TO THE EXISTING STOP SIGN POST.

△ THE G20-5 SIGN SHALL BE PLACED IMMEDIATELY IN FRONT OF THE EXISTING STOP SIGN, A MINIMUM OF 6" BELOW THE BOTTOM OF THE STOP SIGN. THE SIGN SHOULD BE REMOVED OR COVERED WHEN THERE IS NO PILOT CAR.

Plotted By : dancavero
 Plot File : g:\W\05\000\ROAD\AD\76730.shp
 Plot Date : 1/18/2010

NO.	DATE	REVISIONS	BY	APP'D
3	12-29-05	M4-20 CHANGED TO KM4-20	M.B.	A.A.A.
2	2-1-05	UPDATED WARN. SIGNS, ADDED CHNNL. DEVICES	B.H.	A.A.A.
1	11-19-03	CHANGED BORDER	B.H.	S.A.B.

KANSAS DEPARTMENT OF TRANSPORTATION
 TYPICAL TRAFFIC CONTROL
 TWO-LANE HIGHWAY
 ONE LANE CLOSED
 FLAGGER OR PILOT CAR
 TET730 9/1/00

DESIGNED	B.A.H.	APP'D	Anthony A. Alroboire
DESIGN CK.	DETAIL CK.	QUANTITIES	TRACED
		QUAN. CK.	TRACE CK.