

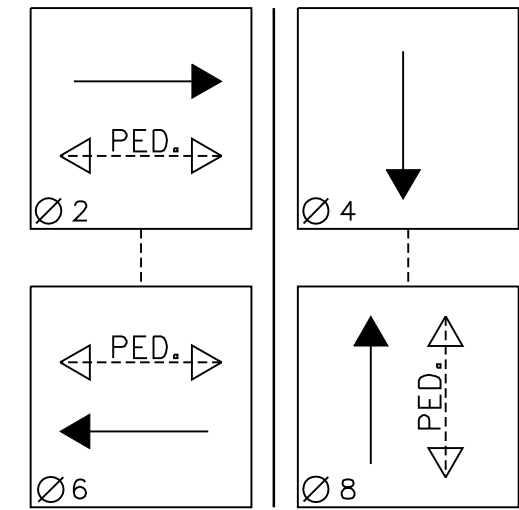
STATE	PROJECT NO.	YEAR	SHEET NO.	TOTAL SHEETS
KANSAS	472-84295	2010	117	194



LEGEND

- METAL TRAFFIC SIGNAL POLE
- PEDESTRIAN SIGNAL INDICATION
- TRAFFIC SIGNAL INDICATION
- TRAFFIC SIGNAL WITH BACKPLATE
- (B) MAST ARM SUSPENDED TRAFFIC SIGNAL
- 36" SERVICE BOX
- ⊙ JUNCTION BOX
- CONDUIT (TRENCHED)
- CONDUIT (BORED)
- ⊠ CONTROLLER AND CABINET (PAD MOUNTED)
- ⊙ SECONDARY SERVICE POINT
- ⊙ DETECTOR NUMBER
- ▨ VIDEO DETECTION ZONE
- LED LUMINAIRE
- P.B. PEDESTRIAN PUSH BUTTON
- ⊙ POLE NUMBER
- SIGN (LARGE)
- SIGN (SMALL)
- ⊙ VIDEO DETECTION CAMERA
- ⊙ SERVICE BOX NUMBER

SIGNAL PHASING



----- INDICATES NON-CONFLICTING PHASES THAT MAY TIME CONCURRENTLY. PEDESTRIAN INTERVALS TO OCCUR ONLY AFTER PUSHBUTTON ACTIVATION

SIGN LOCATIONS

SIGN TYPE	POLE NO.	SPACING ON ARM
1. Street Name	1	14.0'
2. Street Name	2	9.0'
3. Street Name	3	17.0'
4. Street Name	4	5.0'

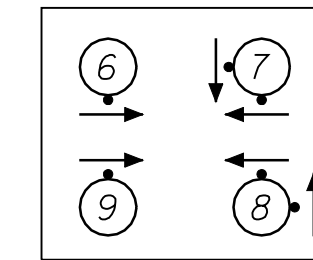
POLE/CONTROLLER LOCATIONS

POLE NO.	STATION	OFFSET
1	46+18.50	41.0' LT.
2	46+81.00	52.0' LT.
3	46+89.50	40.0' RT.
4	46+45.50	41.0' RT.
CTRL.	46+03.00	48.0' LT.

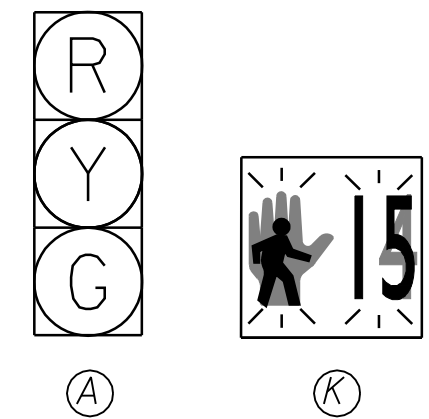
SERVICE BOX LOCATIONS

BOX NO.	STATION	OFFSET
8	46+78.00	45.00' LT.
9	46+26.00	43.50' LT.
10	46+89.00	36.00' RT.
11	46+43.00	37.00' RT.
12	46+12.00	28.00' RT.

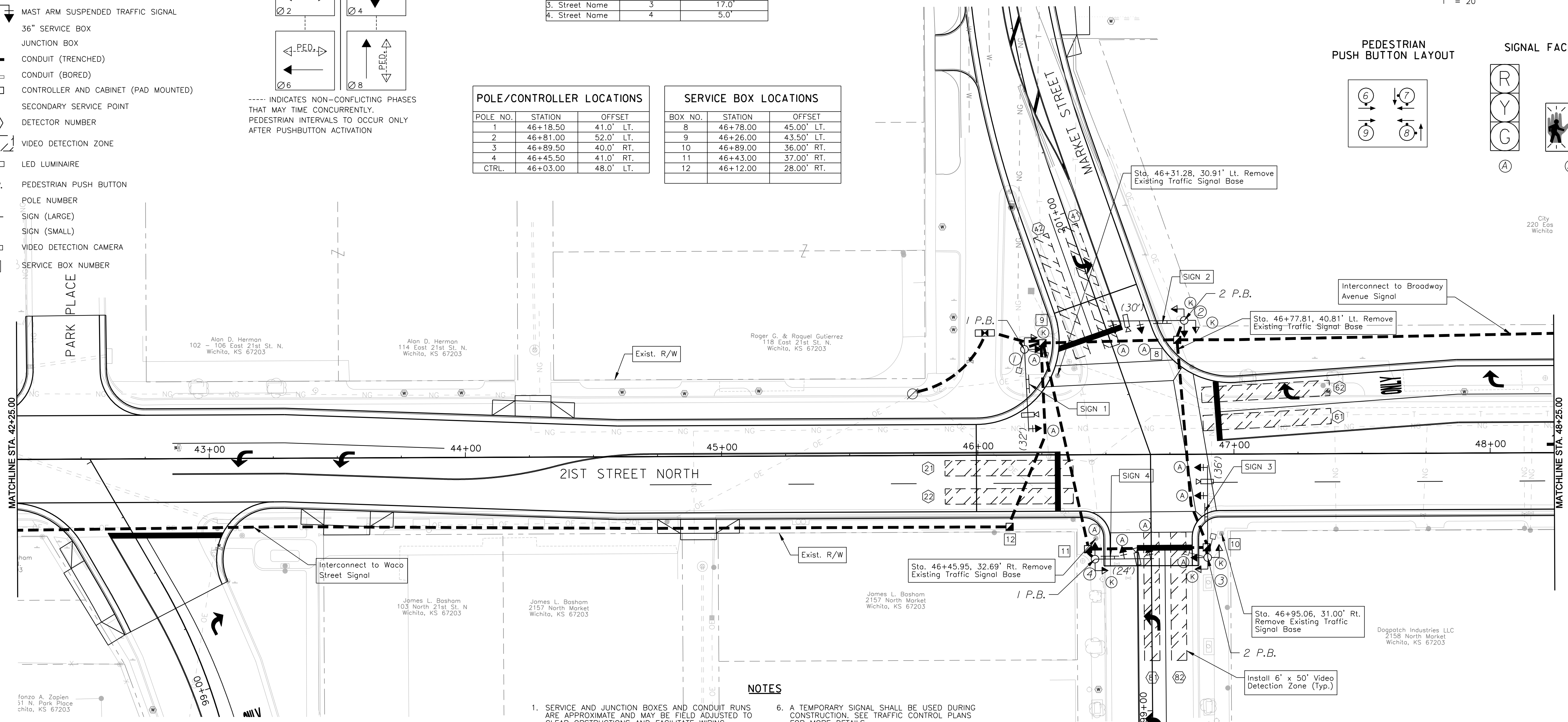
PEDESTRIAN PUSH BUTTON LAYOUT



SIGNAL FACES



DATE	
BY	
REFERENCES NOTED	
REFERENCES CHECKED	



NOTES

1. SERVICE AND JUNCTION BOXES AND CONDUIT RUNS ARE APPROXIMATE AND MAY BE FIELD ADJUSTED TO CLEAR OBSTRUCTIONS AND FACILITATE WIRING, AS APPROVED BY THE ENGINEER.
2. VIDEO DETECTION ZONES SHALL BE CENTERED IN TRAFFIC LANES, EXCEPT AS INDICATED ON THE PLANS.
3. LUMINAIRE ARMS SHALL BE ORIENTED OVER AND PERPENDICULAR TO THE MAST ARM.
4. ALL EQUIPMENT SHALL BE NEW UNLESS SHOWN OTHERWISE ON THE PLANS. THE CONTRACTOR SHALL REMOVE ALL EXISTING EQUIPMENT THAT IS NOT TO BE RE-USED. SIGNAL HEADS OR TRAFFIC SIGNS THAT CONFLICT WITH THE TRAFFIC CONTROL, SHALL BE COVERED OR REMOVED AND DELIVERED TO 1801 S. MCLEAN.
5. ALL EXISTING SIGNAL POLES, BRACKETS, HARDWARE, SIGNS OR OTHER APPURTENANT ITEMS SHALL BE REMOVED IN SALVAGEABLE CONDITION AND BECOME THE PROPERTY OF THE CITY AND DELIVERED TO 1801 S. MCLEAN. PAYMENT FOR THIS WORK SHALL BE SUBSIDIARY TO THE LUMP SUM BID ITEM "TRAFFIC SIGNAL SYSTEM".
6. A TEMPORARY SIGNAL SHALL BE USED DURING CONSTRUCTION. SEE TRAFFIC CONTROL PLANS FOR MORE DETAILS.
7. EXISTING FEATURES AND UTILITIES ARE SHOWN FROM AVAILABLE INFORMATION AND SHOULD BE CONSIDERED APPROXIMATE ONLY. IT IS THE RESPONSIBILITY OF THE CONTRACTOR TO VERIFY UTILITIES AND THEIR EXACT LOCATION PRIOR TO CONSTRUCTION.
8. SERVICE BOX 12 IS PART OF INTERCONNECT SYSTEM TO THE WACO INTERSECTION (WEST). SEE SUCCEEDING SHEETS FOR ADDITIONAL INFORMATION.
9. ALL CONDUIT RUNS SHALL BE STRAIGHT BETWEEN BOXES AND/OR FOUNDATIONS. CURVED LINES SHOWN ON PLAN FOR CLARITY ONLY.
10. TWO 1" CONDUITS SHALL BE STUBBED OUT OF EACH SIGNAL POLE BASE EQUIPPED WITH LUMINAIRES FOR THE PURPOSE OF LIGHTING WIRING WHICH WILL BE FED FROM A SEPARATE CIRCUIT THAN SIGNAL. SEE LIGHTING PLANS FOR MORE DETAILS.

\$getenv, "dwgprefix"\$(getenv, "dwgname"), "Plotter\$(etime, 0, MON DD", "YYYY - HHMM", "pm")
 Plotted By: danavarro
 File: g:\W050001\ROAD\001\ts02.sht

CITY OF WICHITA 21ST STREET NORTH & BROADWAY AVENUE INTERSECTION TRAFFIC SIGNALS 21ST STREET NORTH & MARKET INTERSECTION WICHITA, KANSAS	
	DESIGNED: M.D.B. CHECKED: B.A.L. DATE: 1/8/2010