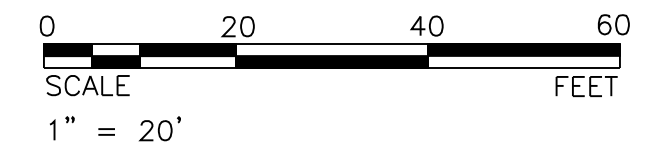


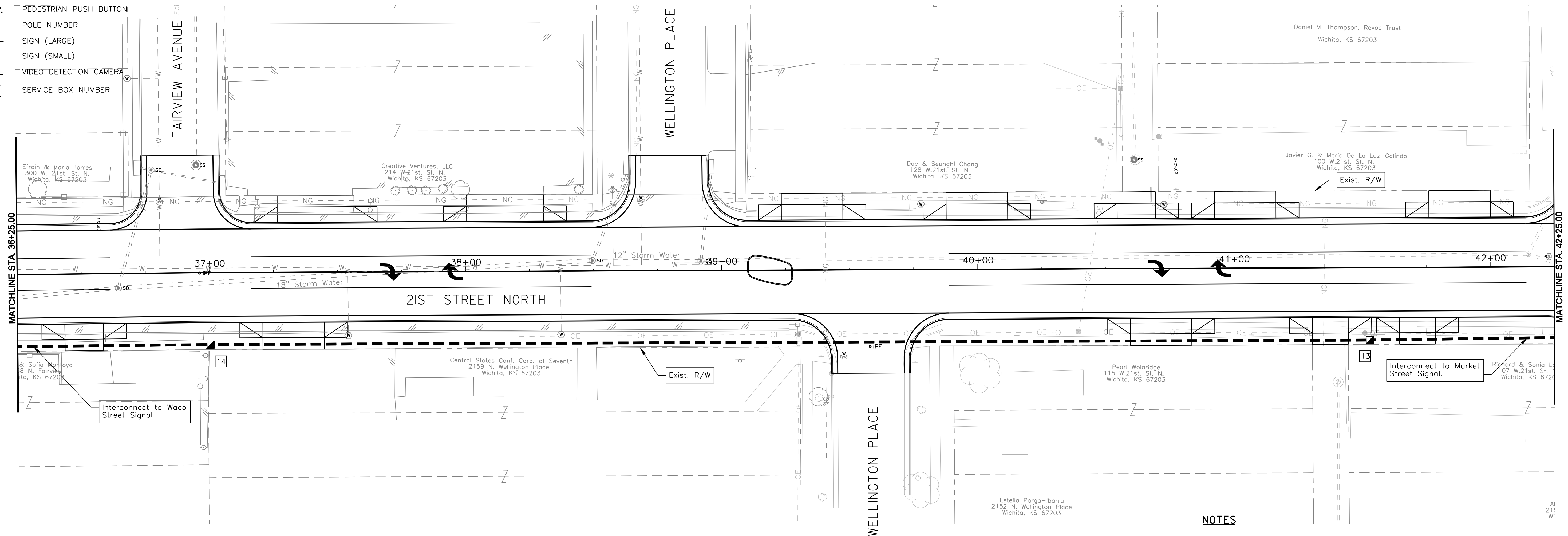
| | | | | |
|--------|-------------|------|-----------|--------------|
| STATE | PROJECT NO. | YEAR | SHEET NO. | TOTAL SHEETS |
| KANSAS | 472-84295 | 2010 | 120 | 194 |



LEGEND

- METAL TRAFFIC SIGNAL POLE
- ➔ PEDESTRIAN SIGNAL INDICATION
- ➔ TRAFFIC SIGNAL INDICATION
- ➔ TRAFFIC SIGNAL WITH BACKPLATE
- (B') ➔ MAST ARM SUSPENDED TRAFFIC SIGNAL
- ▣ 36" SERVICE BOX
- ⊙ JUNCTION BOX
- CONDUIT (TRENCHED)
- - - CONDUIT (BORED)
- ▣ CONTROLLER AND CABINET (PAD MOUNTED)
- SECONDARY SERVICE POINT
- ⊙ DETECTOR NUMBER
- ▨ VIDEO DETECTION ZONE
- ⊙ LUMINAIRE
- P.B. PEDESTRIAN PUSH BUTTON
- ⊙ POLE NUMBER
- ⊙ SIGN (LARGE)
- ⊙ SIGN (SMALL)
- ▣ VIDEO DETECTION CAMERA
- ⊙ SERVICE BOX NUMBER

| SERVICE BOX LOCATIONS | | |
|-----------------------|----------|-----------|
| BOX NO. | STATION | OFFSET |
| 13 | 41+52.00 | 28.0' RT. |
| 14 | 37+00.00 | 28.0' RT. |



NOTES

1. SERVICE AND JUNCTION BOXES AND CONDUIT RUNS ARE APPROXIMATE AND MAY BE FIELD ADJUSTED TO CLEAR OBSTRUCTIONS AND FACILITATE WIRING, AS APPROVED BY THE ENGINEER
2. ALL EQUIPMENT SHALL BE NEW UNLESS SHOWN OTHERWISE ON THE PLANS. THE CONTRACTOR SHALL REMOVE ALL EXISTING EQUIPMENT THAT IS NOT TO BE RE-USED. SIGNAL HEADS OR TRAFFIC SIGNS THAT CONFLICT WITH THE TRAFFIC CONTROL, SHALL BE COVERED OR REMOVED.
3. EXISTING FEATURES AND UTILITIES ARE SHOWN FROM AVAILABLE INFORMATION AND SHOULD BE CONSIDERED APPROXIMATE ONLY. IT IS THE RESPONSIBILITY OF THE CONTRACTOR TO VERIFY UTILITIES AND THEIR EXACT LOCATION PRIOR TO CONSTRUCTION.
4. SERVICE BOXES 13 & 14 ARE PART OF INTERCONNECT SYSTEM BETWEEN THE WACO STREET INTERSECTION (WEST) AND THE MARKET STREET INTERSECTION (EAST). SEE SUCCEEDING SHEETS FOR ADDITIONAL INFORMATION.

| | |
|--------------------|--|
| DATE | |
| BY | |
| REFERENCES NOTED | |
| REFERENCES CHECKED | |

\$[getvar, "dwgprefix"]\$(getvar, "dwgname"). Plotdate\$(etime, 0, MON DD" " YYYY - HHMM) (pm)
 Plotted By: danavarrro
 File: g:\W05\0001\ROAD\001ts03.sht

| | | | | | | | |
|---|--|----------|--------|--------|---------|--------|----------|
| CITY OF WICHITA 21ST STREET NORTH & BROADWAY AVENUE INTERSECTION 21ST STREET INTERCONNECT WICHITA, KANSAS | | | | | | | |
| | <table border="1"> <tr> <td>DESIGNED</td> <td>M.D.B.</td> <td>D.A.N.</td> </tr> <tr> <td>CHECKED</td> <td>B.A.L.</td> <td>1/8/2010</td> </tr> </table> | DESIGNED | M.D.B. | D.A.N. | CHECKED | B.A.L. | 1/8/2010 |
| DESIGNED | M.D.B. | D.A.N. | | | | | |
| CHECKED | B.A.L. | 1/8/2010 | | | | | |