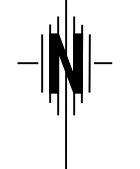
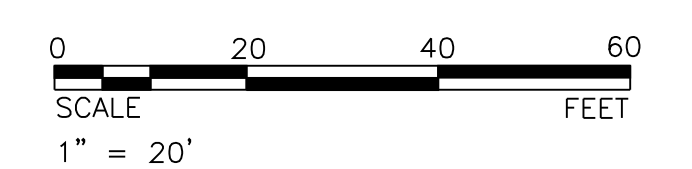


STATE	PROJECT NO.	YEAR	SHEET NO.	TOTAL SHEETS
KANSAS	472-84295	2010	137	194



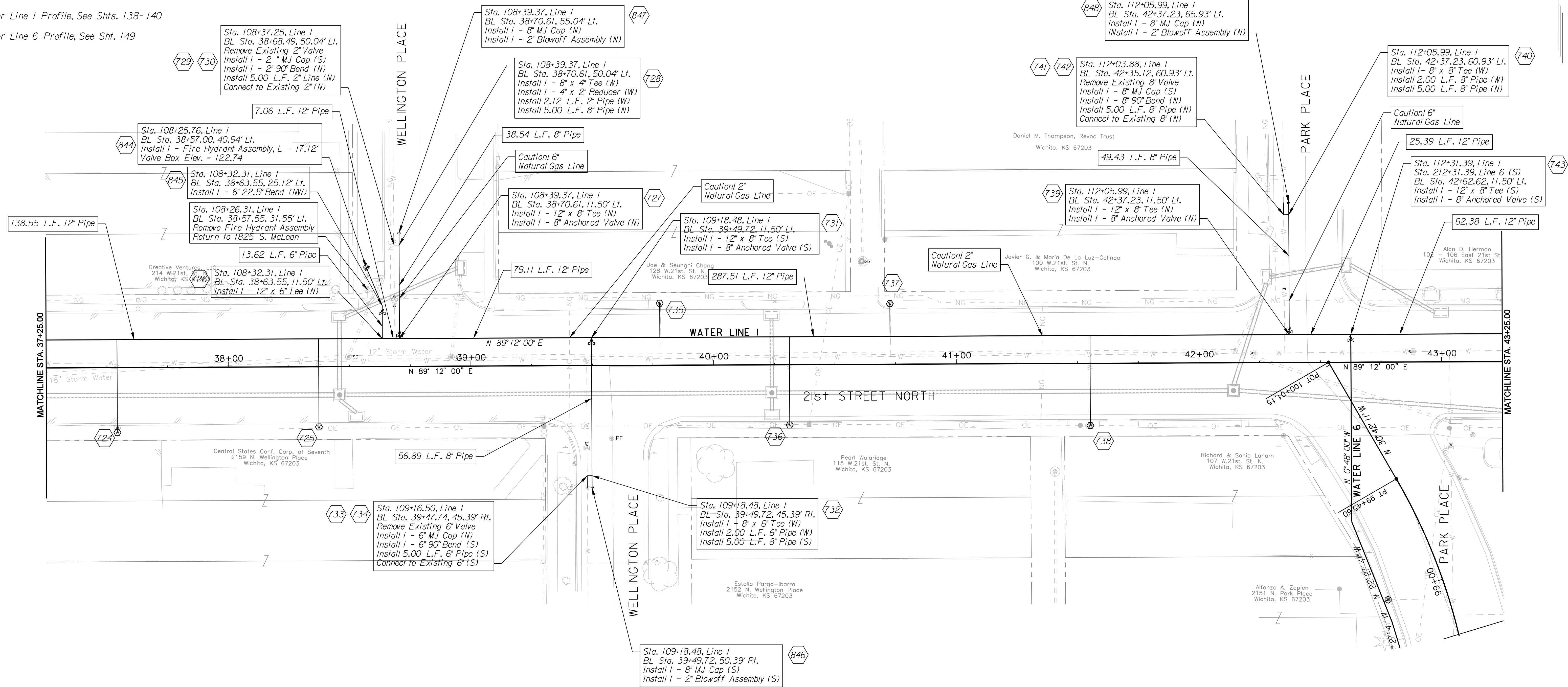
- Note:
- All new and replaced water services shall be tapped only on the 8" and 12" Water Lines, not on the 20" Water Line.
  - All 8" Stubs on sidestreets shall be 5' deep.
  - New road construction has been left off for Water Line clarity. Refer to road construction sheets to see Water Line placement in reference to the new road construction.

# All Control and Coordinate Data is located on Sht. 135

Water Line I Profile, See Shts. 138-140

Water Line 6 Profile, See Sht. 149

DATE	
BY	
REFERENCES NOTED	
REFERENCES CHECKED	



Plotted By: danavarrro Plotted: 1/8/2010  
 File: g:\W0510001\ROAD\001wp02.sht

CITY OF WICHITA	
21ST STREET NORTH & BROADWAY AVENUE INTERSECTION	
WATER LINE PLANS	
21ST STREET NORTH	
STA. 37+25.00 TO STA. 43+25.00	
WICHITA, KANSAS	
DESIGNED	M.D.B.
CHECKED	B.A.L.
DATE	1/8/2010
DRAWN	D.A.N.
DATE	1/8/2010

