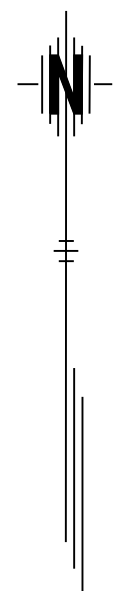
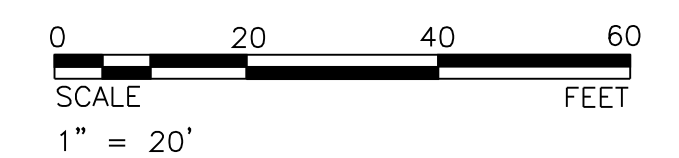


STATE	PROJECT NO.	YEAR	SHEET NO.	TOTAL SHEETS
KANSAS	472-84295	2010	139	194



Note:
1. All new and replaced water services shall be tapped only on the 8" and 12" Water Lines, not on the 20" Water Line.

2. New road construction has been left off for Water Line clarity. Refer to road construction sheets to see Water Line placement in reference to the new road construction.

(A) Remove Existing Manhole and Plug Existing RCP Pipe, Subsidiary to Removal of Existing Structures.

(#) All Control and Coordinate Data is located on Sht. 135

Water Line I Profile, See Shts. 138-140

Water Line IA Profile, See Sht. 140

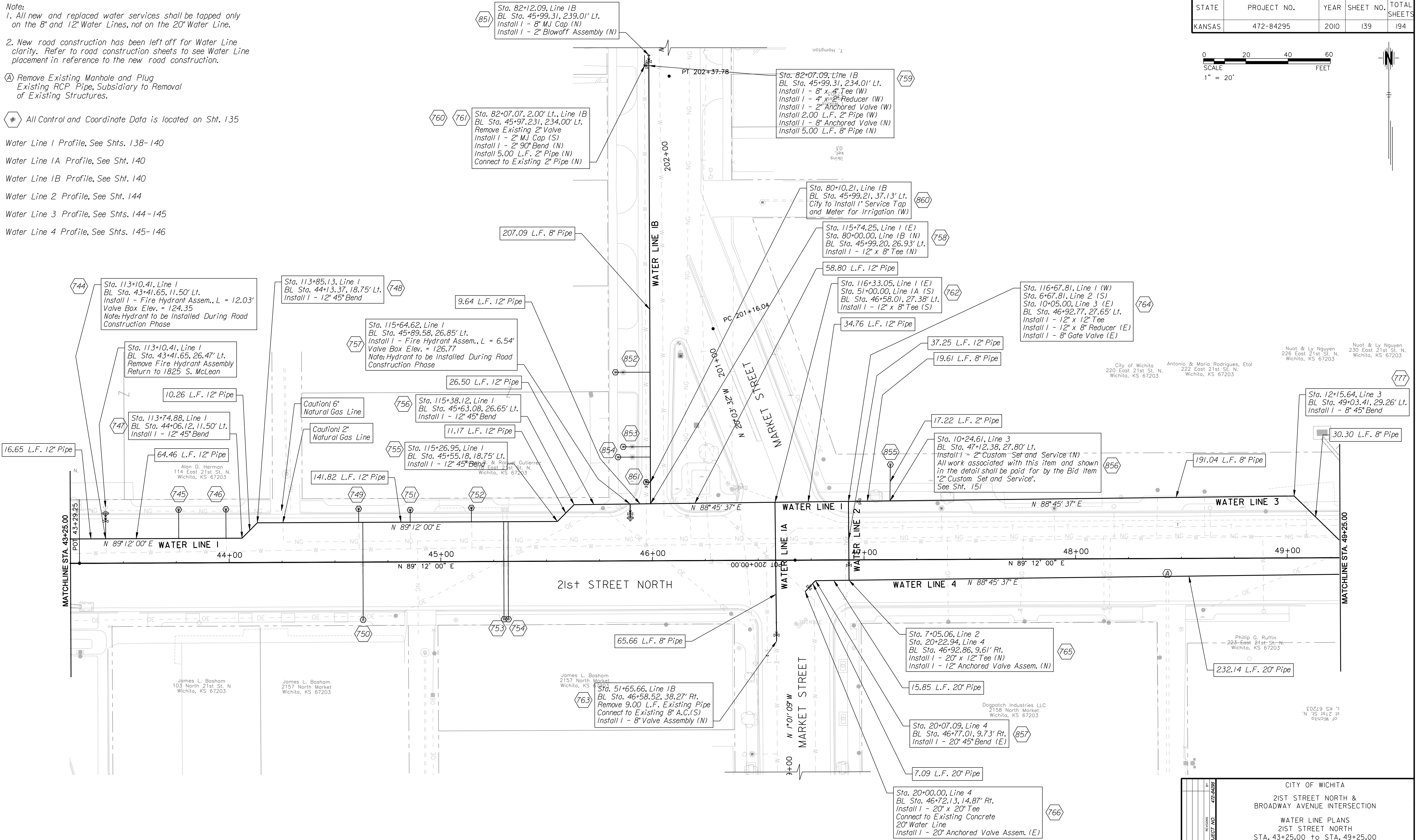
Water Line IB Profile, See Sht. 140

Water Line 2 Profile, See Sht. 144

Water Line 3 Profile, See Shts. 144-145

Water Line 4 Profile, See Shts. 145-146

DATE	BY	REFERENCES NOTED	REFERENCES CHECKED



City of Wichita
220 East 21st St. N.
Wichita, KS 67203

Antonio & Maria Rodriguez, Etal
222 East 21st St. N.
Wichita, KS 67203

Nuot & Ly Nguyen
230 East 21st St. N.
Wichita, KS 67203

Nuot & Ly Nguyen
230 East 21st St. N.
Wichita, KS 67203

Alan D. Hermon
114 East 21st St. N.
Wichita, KS 67203

Alfonso & Rosal Gutierrez
215 East 21st St. N.
Wichita, KS 67203

James L. Bosham
2157 North Market
Wichita, KS

James L. Bosham
103 North 21st St. N.
Wichita, KS 67203

James L. Bosham
2157 North Market
Wichita, KS 67203

Phillip G. Ruffin
223 East 21st St. N.
Wichita, KS 67203

of Wichita
KS 67203

Dogpatch Industries LLC
2158 North Market
Wichita, KS 67203

Plotted By: danavarr
File: g:\W0510001\ROAD\001\wp03.sht

CITY OF WICHITA
21ST STREET NORTH &
BROADWAY AVENUE INTERSECTION
WATER LINE PLANS
21ST STREET NORTH
STA. 43+25.00 TO STA. 49+25.00
WICHITA, KANSAS

DESIGNED	M.D.B.	DRAWN	D.A.N.
CHECKED	B.A.L.	DATE:	1/8/2010

