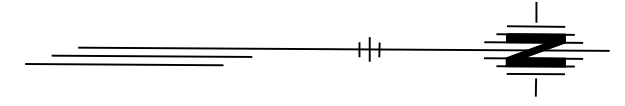
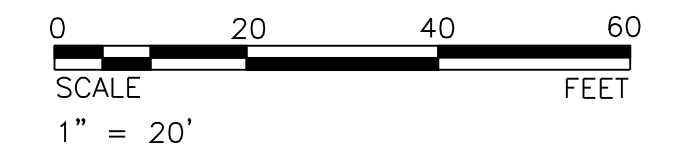


STATE	PROJECT NO.	YEAR	SHEET NO.	TOTAL SHEETS
KANSAS	472-84295	2010	148	194

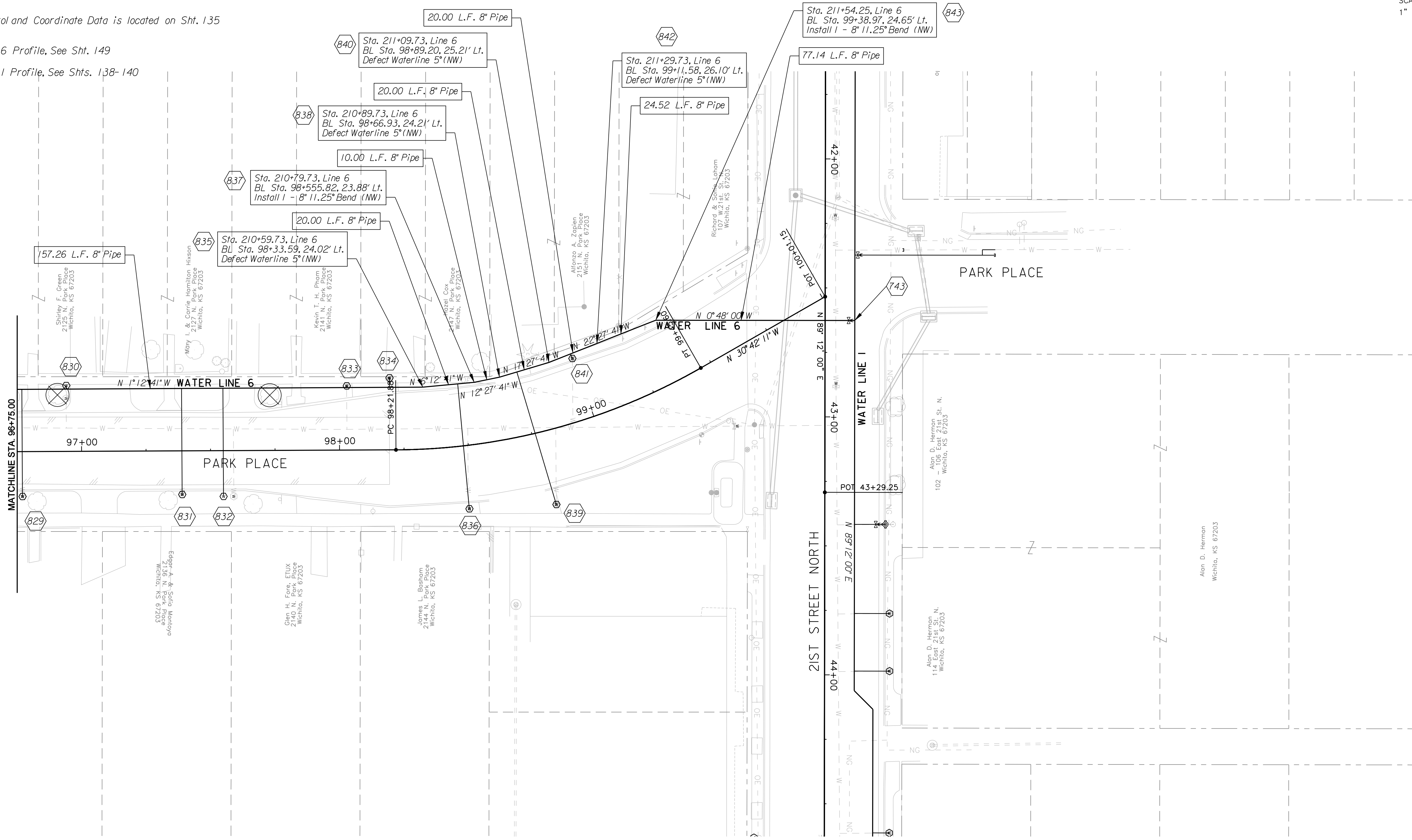


Note:  
 1. All new and replaced water services shall be tapped only on the 8" and 12" Water Lines, not on the 20" Water Line.  
 2. New road construction has been left off for Water Line clarity. Refer to road construction sheets to see Water Line placement in reference to the new road construction.



# All Control and Coordinate Data is located on Sht. 135

Water Line 6 Profile, See Sht. 149  
 Water Line 1 Profile, See Shts. 138-140



DATE	BY	REFERENCES NOTED	REFERENCES CHECKED

Plotted By: danavarro  
 File: g:\w050001\ROAD\001\wp08.sht  
 Plotted: 1/8/2010

CITY OF WICHITA	
21ST STREET NORTH & BROADWAY AVENUE INTERSECTION	
PROPOSED PLAN & PROFILE	
PARK PLACE	
STA. 96+75.00 to STA. 100+01.15	
WICHITA, KANSAS	
DESIGNED	DRAWN
M.D.B.	D.A.N.
CHECKED	DATE
B.A.L.	1/8/2010