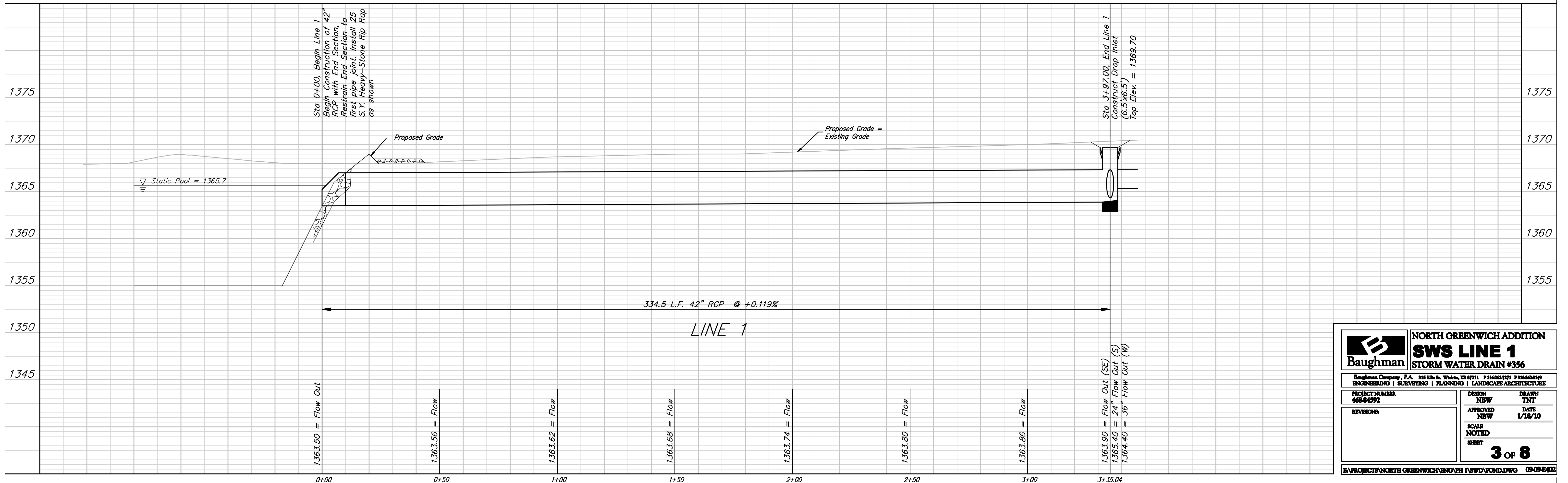
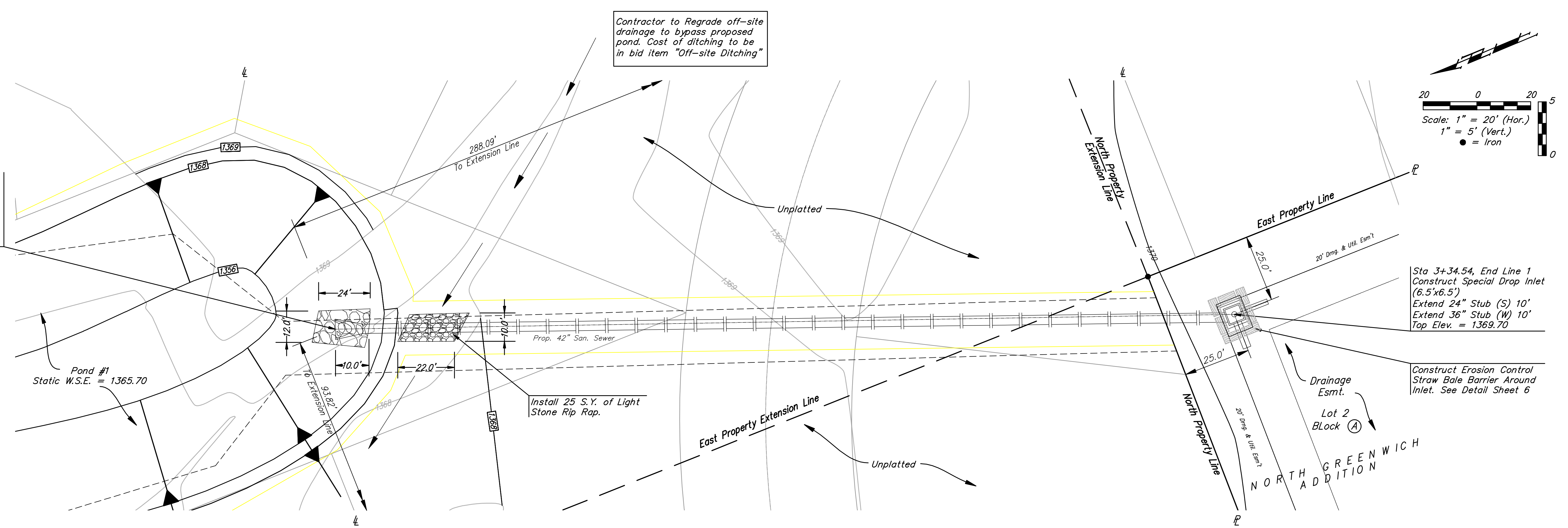


BENCHMARK:

R.R. Spike in asphalt, SW corner, N1/2, SW1/4, Sec. 34, TWP. 26-S, R-2-E.
Elev. = 1400.59 NAVD 88

R.R. Spike in E. face of power pole 174'± N. of S. Line, N1/2, SW1/4 & 49'± E. of W. Line, SW1/4, Sec. 34, TWP. 26-S, R-2-E.
Elev. = 1398.64 NAVD 88

Sta 0+00, Begin Line 1
Begin Construction of 42" RCP with End Section, Restrain End Section to first pipe joint. Install 30 S.Y. Heavy-Stone Rip Rap as shown



		NORTH GREENWICH ADDITION SWS LINE 1 STORM WATER DRAIN #356	
<small>Baughman Company, P.A. 315 3111 St. Whites, PO 67211 P 316-263-7271 F 316-263-0149 ENGINEERING SURVEYING PLANNING LANDSCAPE ARCHITECTURE</small>			
PROJECT NUMBER 468-8492	DESIGN NBW	DRAWN TNT	
REVISIONS:	APPROVED NBW	DATE 1/18/10	
SCALE NOTED		SHEET 3 OF 8	
<small>PROJECT: NORTH GREENWICH ADDITION SWS LINE 1 SWS DRAIN #356 09-09-2010</small>			