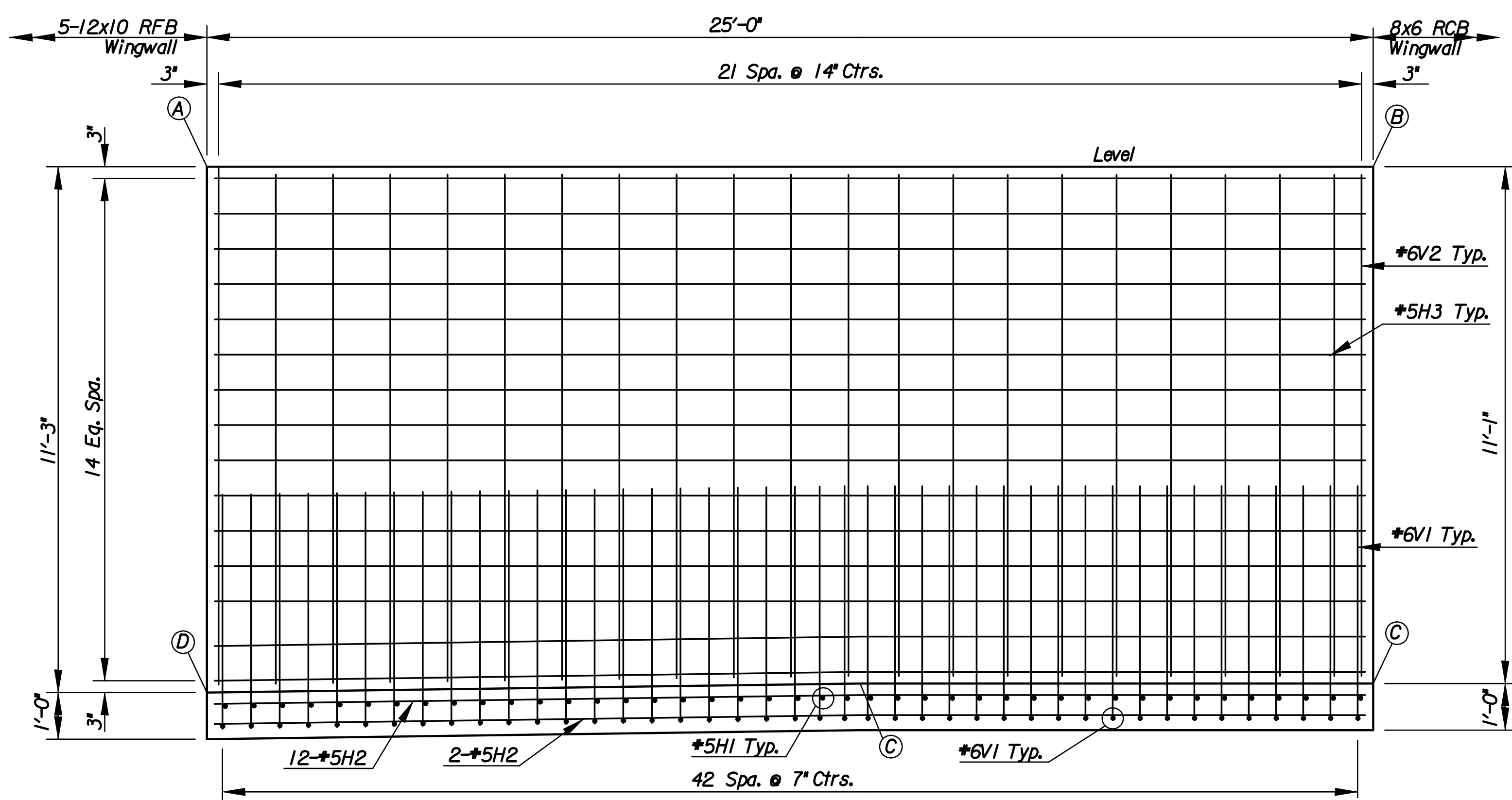
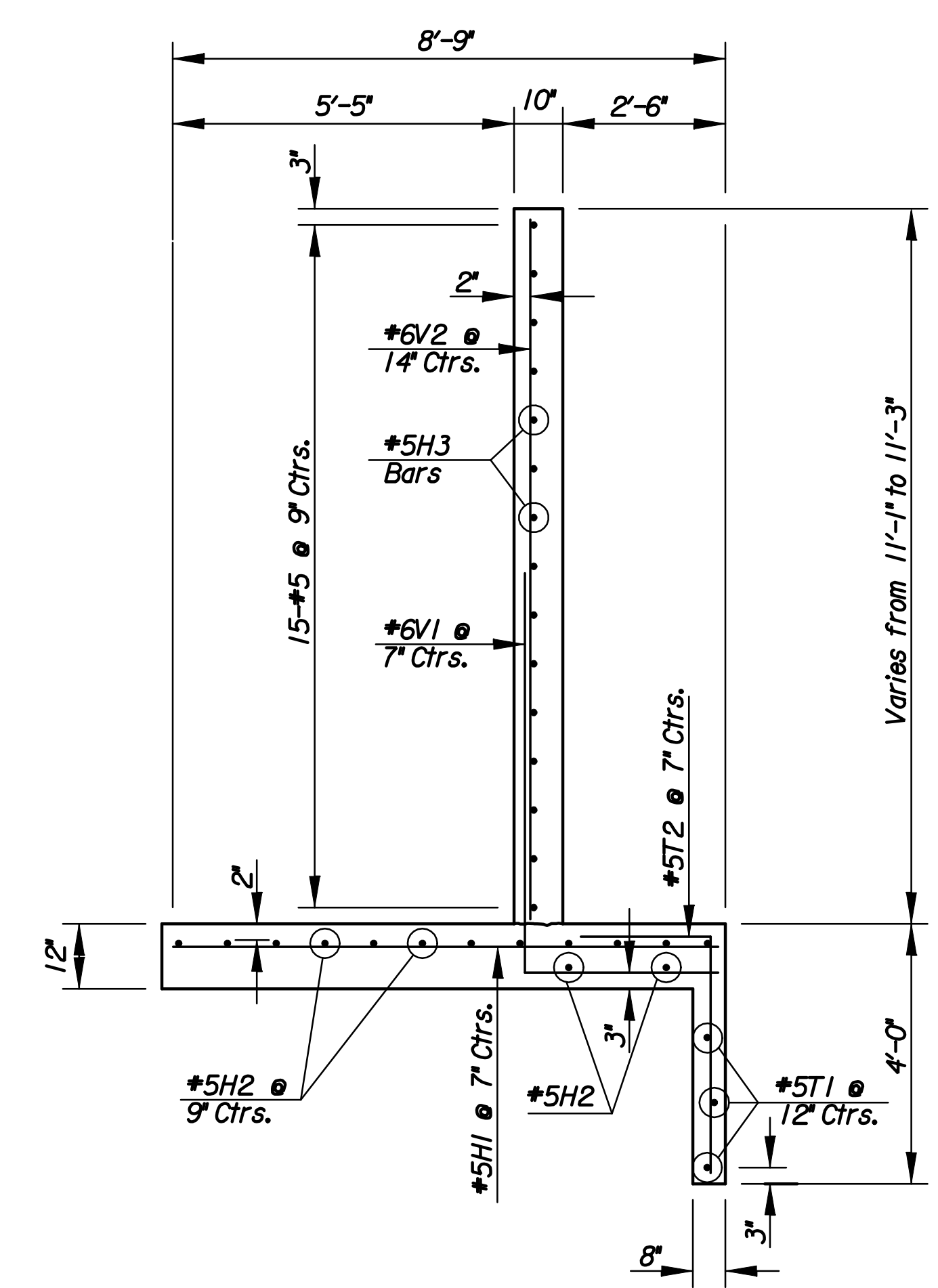


PLAN
Scale: 1" = 8'



WALL B
Scale: 1" = 2'
(Looking South)
(Along C of Wall)

NOTE: See RCB Auxiliary Details for Weephole Details and Locations.

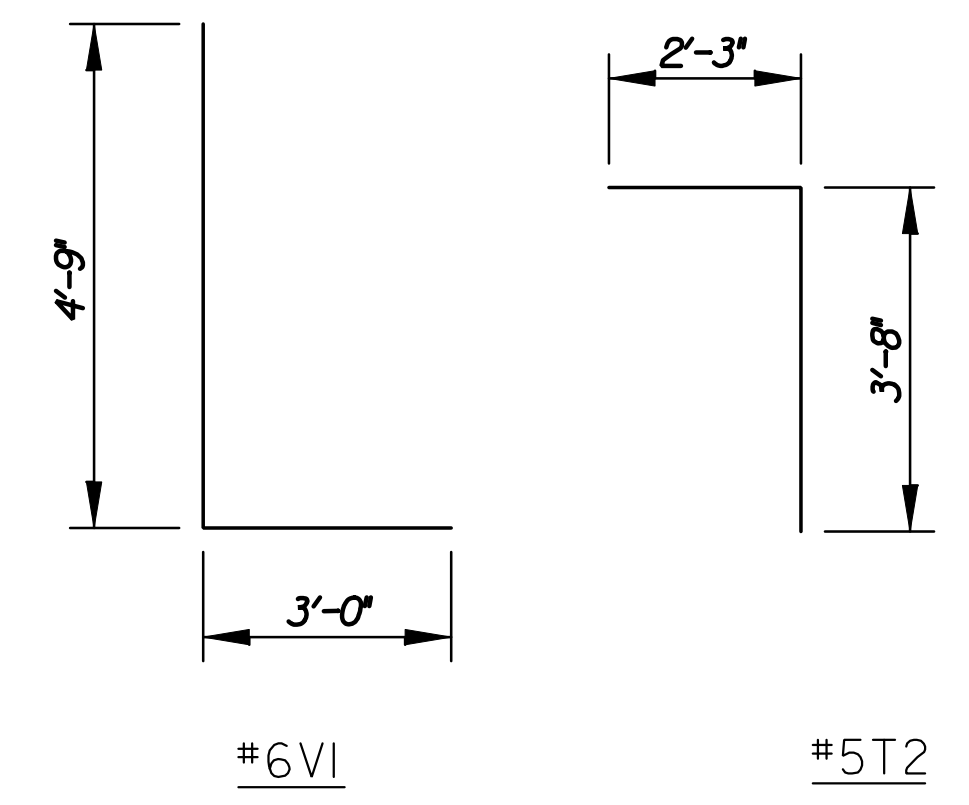


TYPICAL SECTION
Scale: 1" = 2'

BILL OF MATERIALS		
Item	Quantity	Unit
Concrete (Grade 4.0)(AE)	18.6	C.Y.
Reinforcing Steel (Gr. 60) (Epoxy)	2037	Lbs.

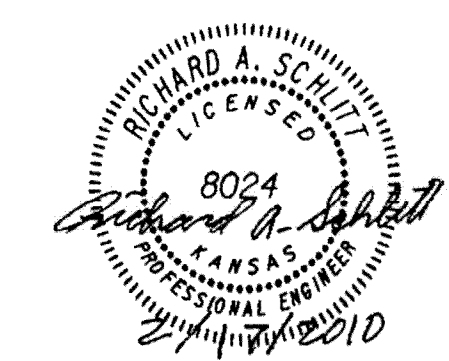
TABLE OF ELEVATIONS				
Location	Elev. A	Elev. B	Elev. C	Elev. D
WALL B	1315.75	1315.75	1304.70	1304.50

REINFORCING SCHEDULE			
REINFORCING STEEL			
Wall B			
Mark	No.	Size	Length
H1	43	5	8'-5"
H2	14	5	24'-8"
H3	15	5	24'-8"
T1	3	5	24'-8"
T2	43	5	5'-11"
V1	43	6	7'-9"
V2	22	6	10'-9"



BENDING DIAGRAMS
Dimensions are out to out of bars

Plotted By: rjm
File: i:\2008\08778\Office Check\08778-062-RetWall(14ft).dgn



No.	Revisions	By	Date
CITY OF WICHITA			
RETAINING WALL DETAILS (WALL B) 127th and Harry St.			
PROJECT NO. 87 N-0514-01		SEDGWICK COUNTY	
Professional Engineering Consultants, P.A. <small>303 S. TOPKA • WICHITA, KANSAS 67202 316-262-2691 • FAX 316-262-3003</small>			
Designed by	R.J.M	Checked by	R.A.S.
Drawn by	C.P.	Date	Feb. 2010
		Job No.	08778