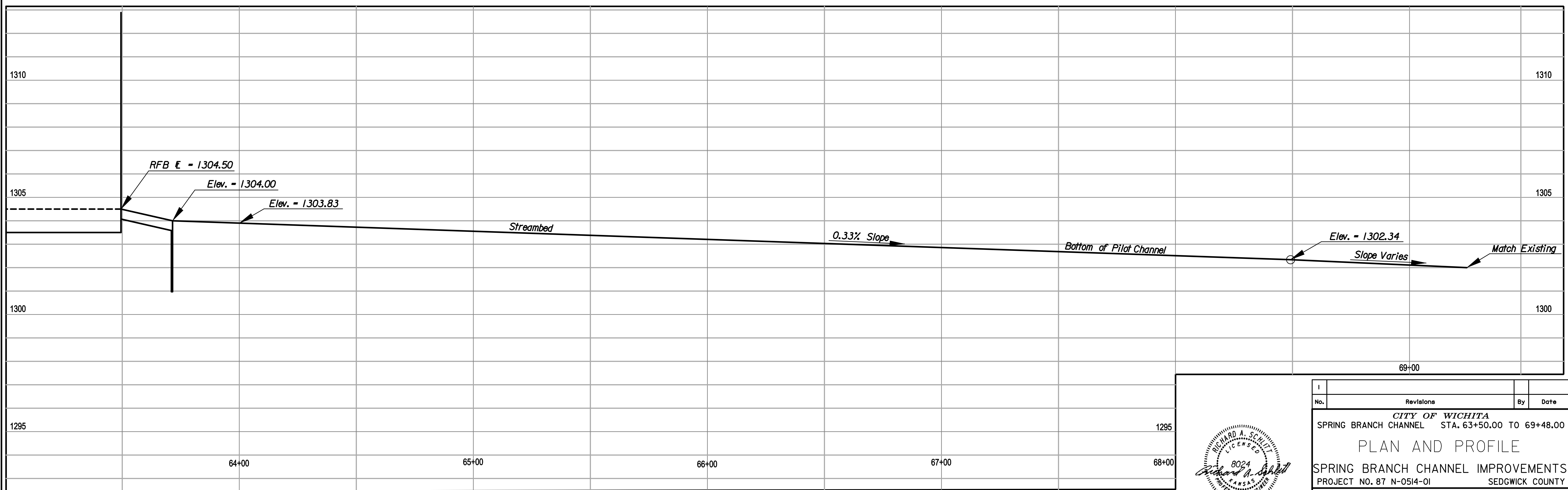
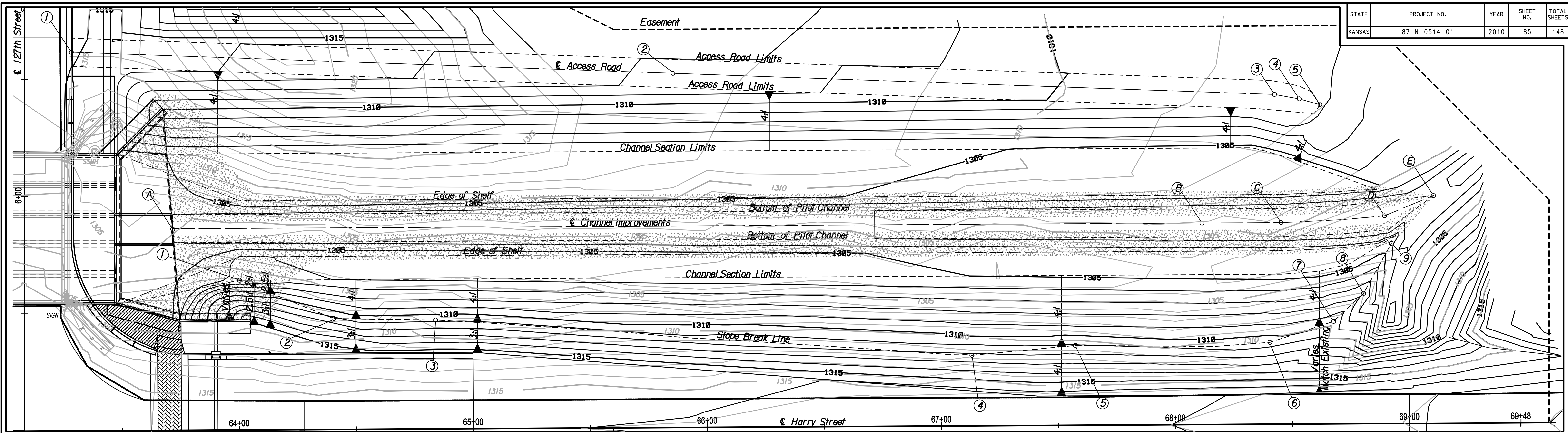
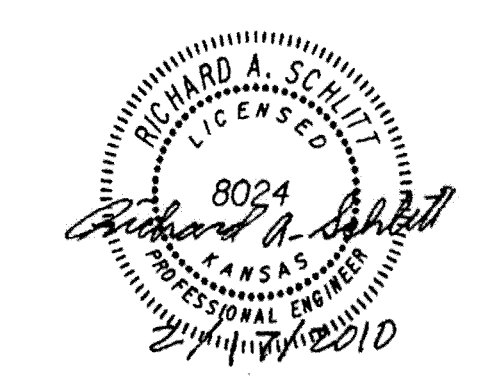


STATE	PROJECT NO.	YEAR	SHEET NO.	TOTAL SHEETS
KANSAS	87 N-0514-01	2010	85	148



Plotted By: rjm  
 Plotted: 2/17/2010  
 File: i:\2008\08778\Office Check\08778-085-PlanandProfile.dgn



No.	Revisions	By	Date

**CITY OF WICHITA**  
 SPRING BRANCH CHANNEL STA. 63+50.00 TO 69+48.00  
**PLAN AND PROFILE**  
 SPRING BRANCH CHANNEL IMPROVEMENTS  
 PROJECT NO. 87 N-0514-01 SEDGWICK COUNTY

**Professional Engineering Consultants, P.A.**  
300 S. TOPEKA • WICHITA, KANSAS 67202  
 316-262-2691 • FAX 316-262-3003

Designed by	R.J.M	Checked by	R.A.S.
Drawn by	R.J.M	Date	Feb. 2010
		Job No.	08778