

CASA BELLA

Wichita, Sedgwick County, Kansas

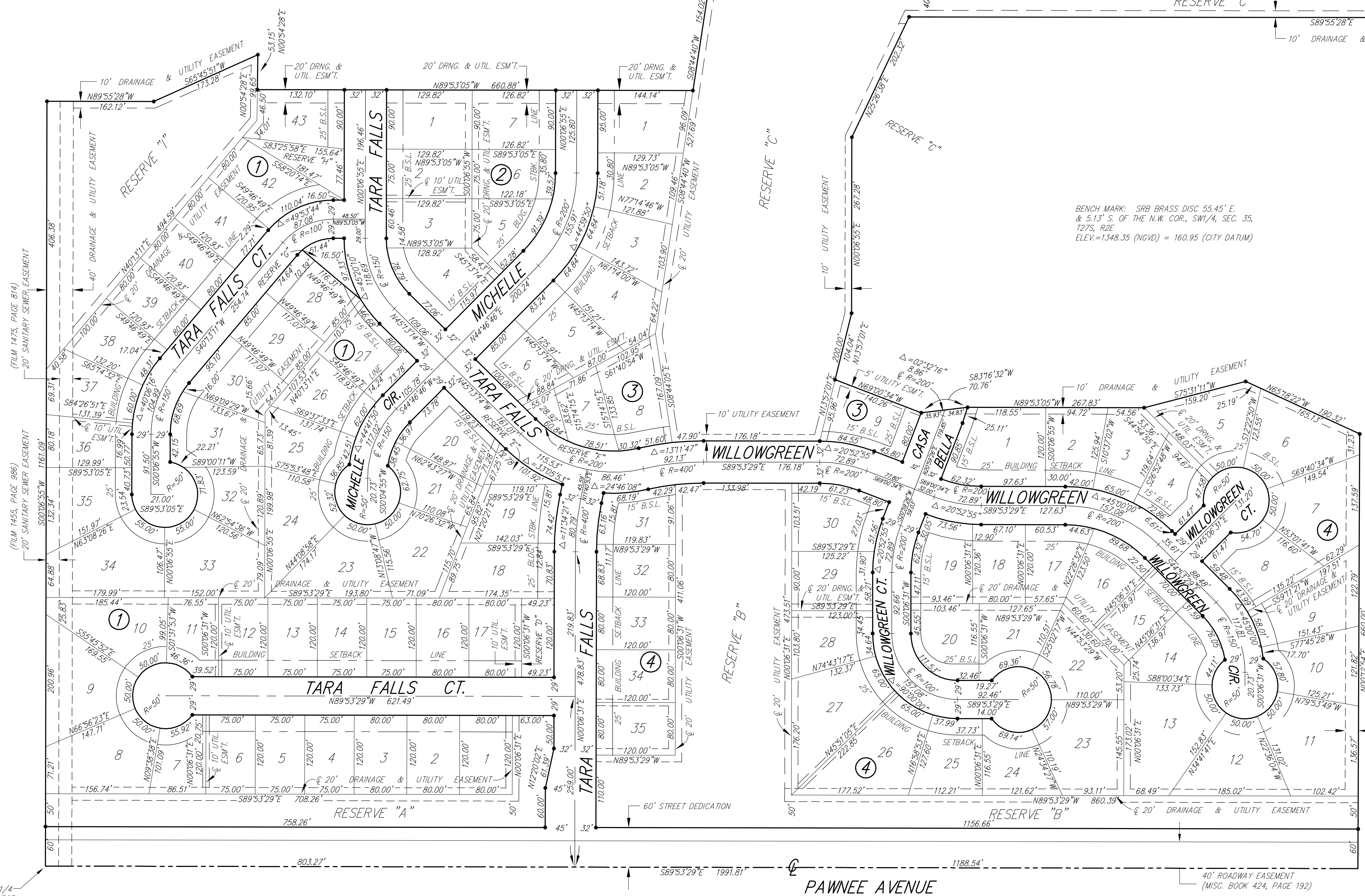
MINIMUM BUILDING PAD ELEVATION FOR LOWEST OPENING INTO STRUCTURES		
BLOCK	LOT NO.	ELEVATION (K.G.V.D.)
1	37, 38, 39, 40, 41, 42, 43	1,350.50
3	1, 2, 3, 4, 8, 9	1,344.50
4	26, 27, 28, 29, 30, 31, 32, 33, 34, 35	1,348.50

SURVEY MARKER LEGEND

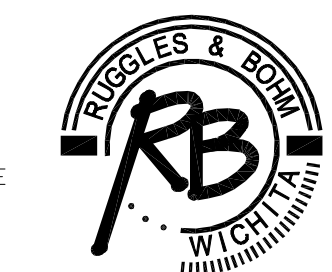
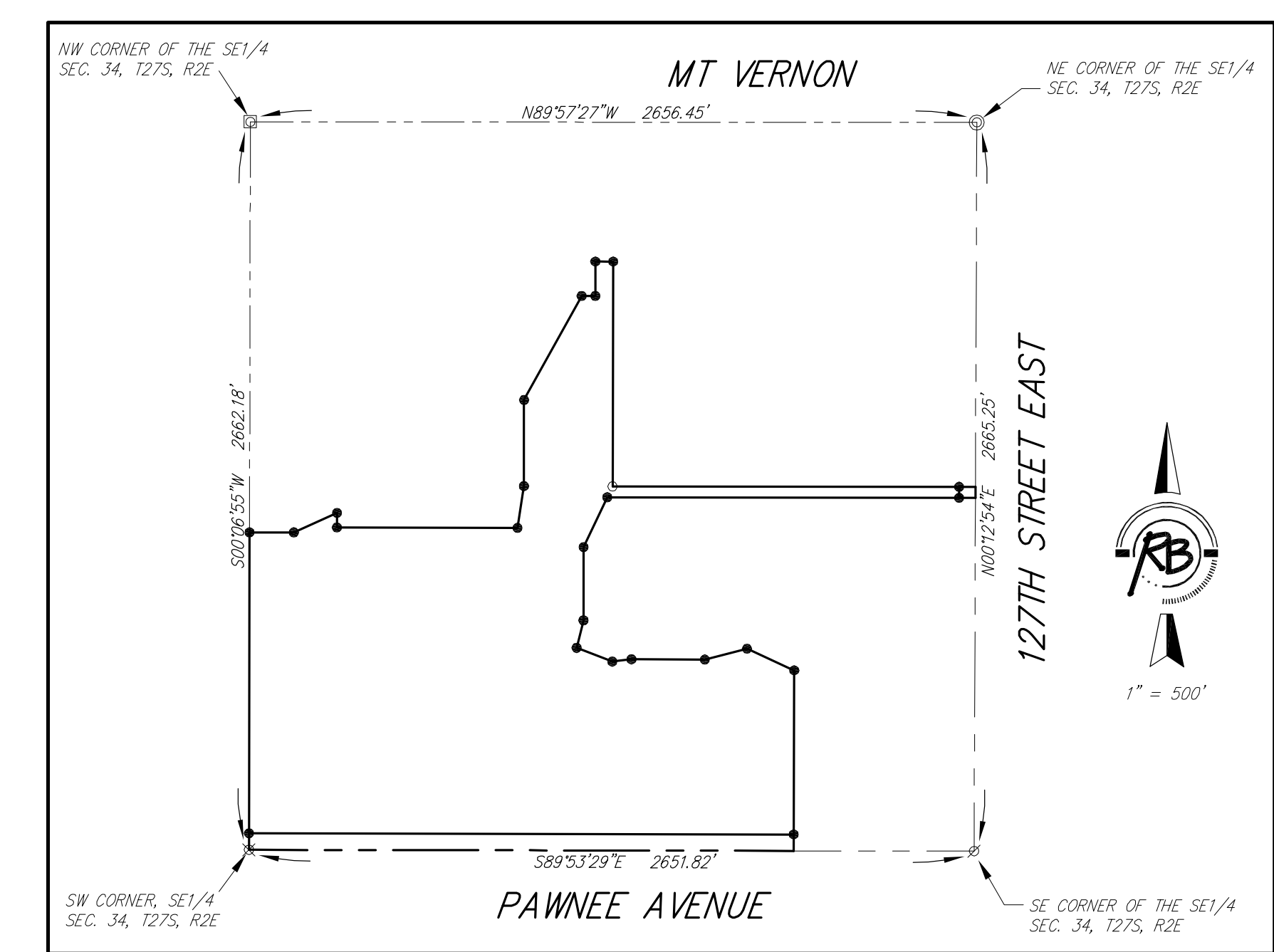
- ⊠ = PK NAIL IN CONCRETE
- = 1/2" IRON PIPE
- ⊙ = 3/4" IRON PIPE
- ⊘ = 5/8" REBAR W/CARBER CAP (FOUND)
- ⊗ = 1" BAR (FOUND)
- = 5/8" REBAR W/R&B CAP (SET)



1" = 100'



BENCH MARK: SRB BRASS DISC 55.45' E. & 5.13' S. OF THE N.W. COR. SW1/4, SEC. 35, T27S, R2E. ELEV.=1348.35 (NCHD) = 160.95 (CITY DATUM)



Ruggles & Bohm, P.A.
 Engineering, Surveying, Land Planning
 924 North Main (316) 264-8008
 Wichita, Kansas 67203 (316) 264-4621 fax
 www.rbkansas.com E-mail: info@rbkansas.com

DWG FILE: SURVEY BASE
 PROJECT NO. 2521P
 SEPTEMBER 26, 2005