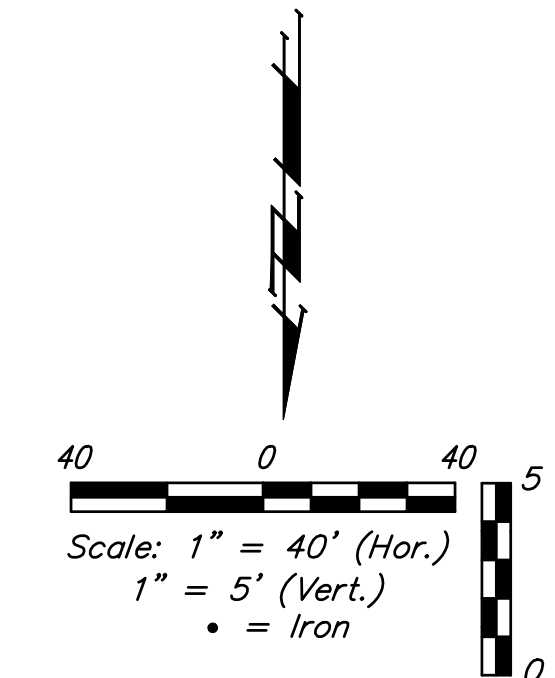
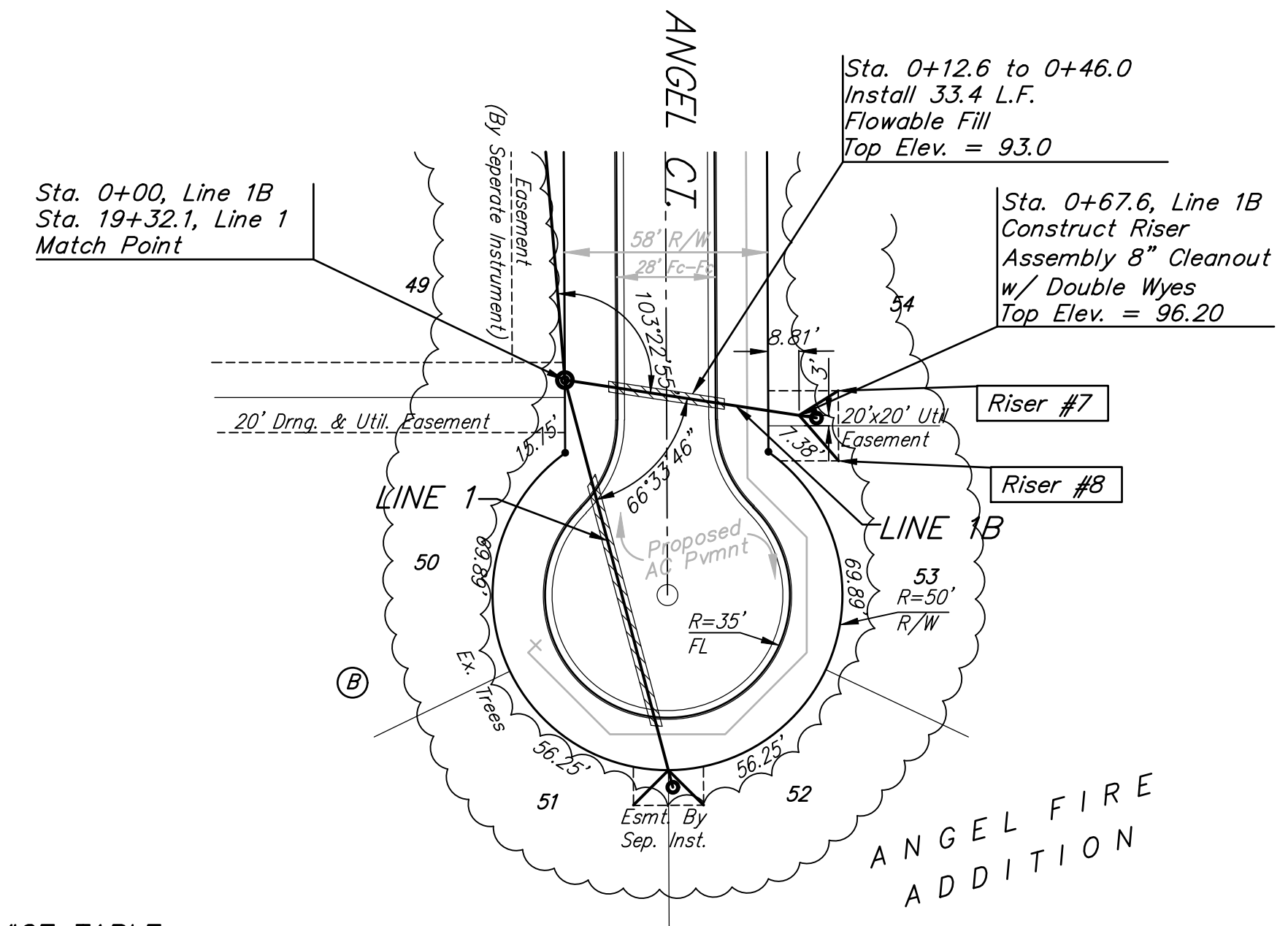
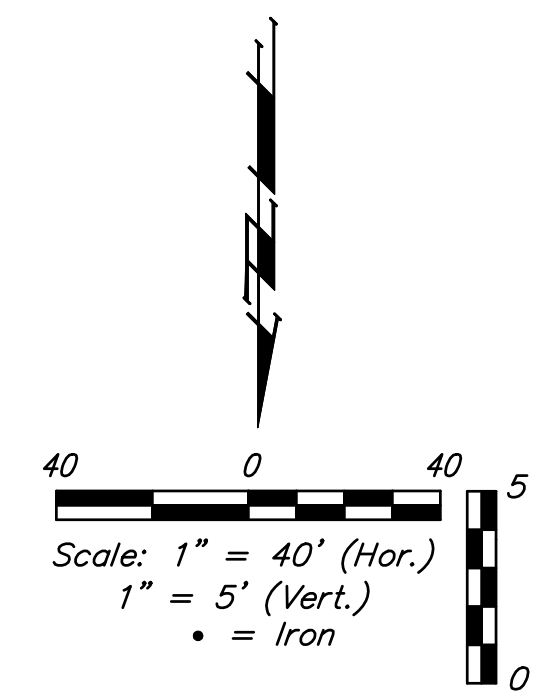
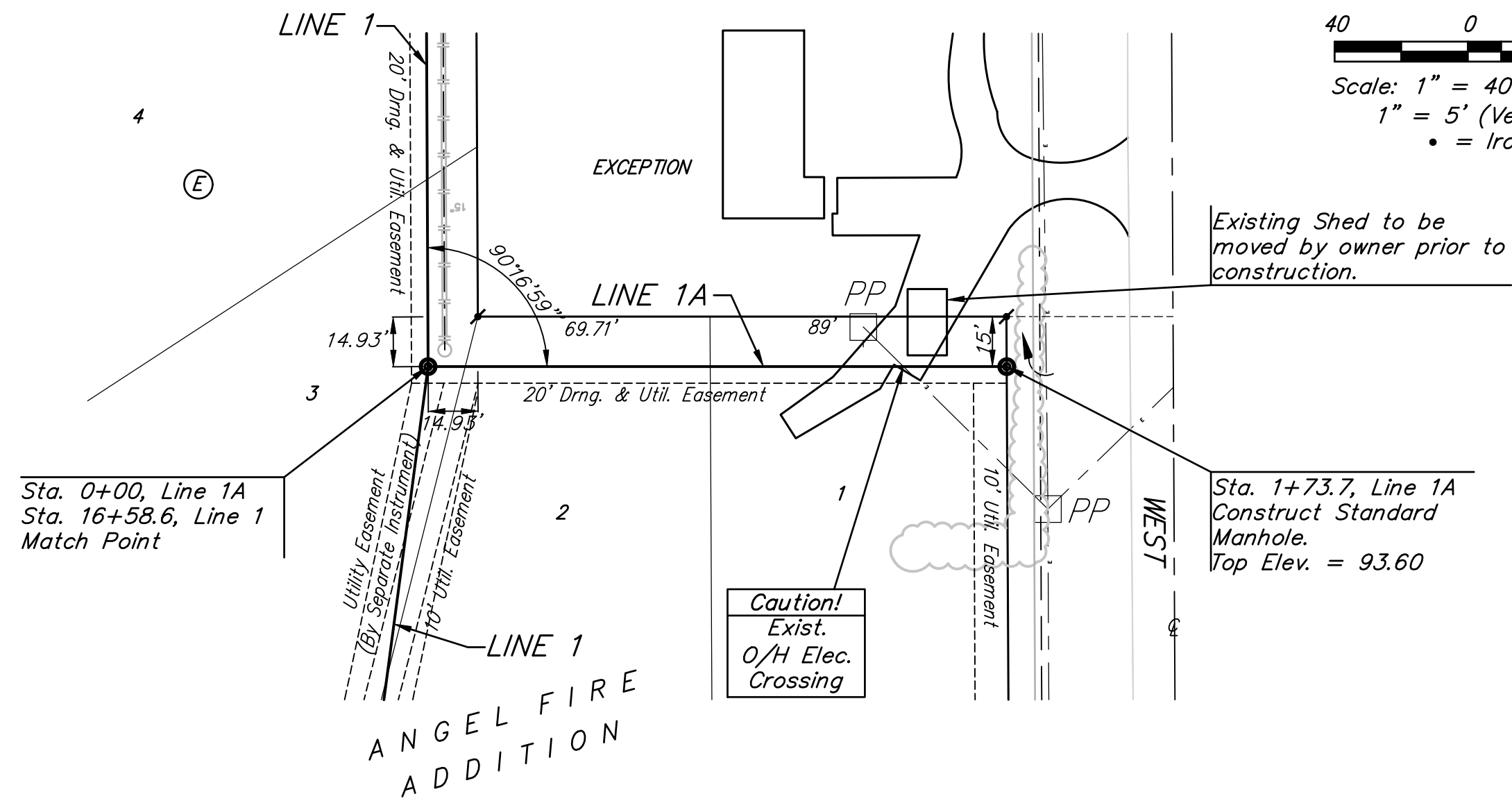


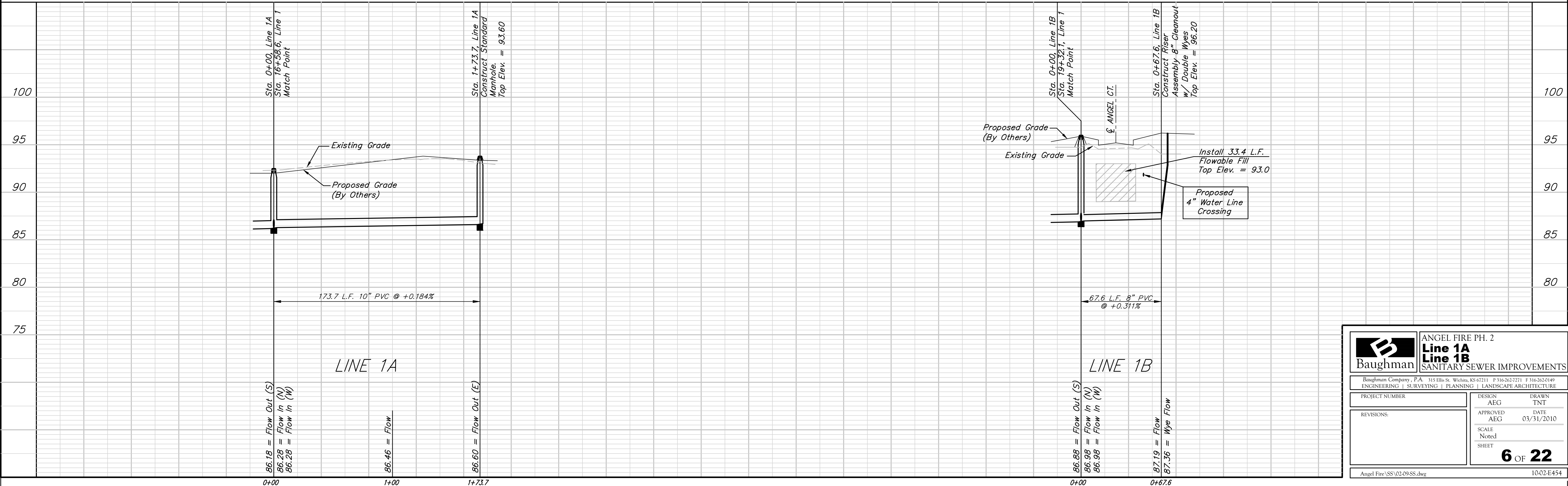
BENCHMARKS:
 C.O.W. Disc SE Corner West St. & 47th S.
 Elev. = 92.29 (City Datum)
 RR Spike in N. face of power pole, SE Corner 47th So. & Kessler
 Elev. = 91.74 (City Datum)
 "□" Cut in Top of Curb Adjacent to the NW Corner Lot 27, Block C.
 Elev. = 93.57 (City Datum)



SEWER SERVICE TABLE

NUMBER	TYPE	LOCATION				FOR INFORMATION ONLY	
		LOT NO.	BLOCK	LINE NO.	STATION \ DIRECTION	APPROXIMATE LENGTH 4" PIPE	VERTICAL
7	4" Dbl. Wye	54	B	1B	0+67.6 \ Lt.	4.1'	14'
8	4" Dbl. Wye	53	B	1B	0+67.6 \ Rt.	4.1	17'

NOTE: Vertical Riser Pipe shall be extended to 2' minimum above ground water elevation and 4' maximum below proposed ground elevation. Contractor shall use Method "B" for riser construction. Pipe shall be laid at 2% slope. See detail, sheet 13.



Baughman ANGEL FIRE PH. 2
Line 1A
Line 1B
 SANITARY SEWER IMPROVEMENTS

Baughman Company, P.A. 315 Ellis St. Wichita, KS 67211 P 316-262-7271 F 316-262-0149
 ENGINEERING | SURVEYING | PLANNING | LANDSCAPE ARCHITECTURE

PROJECT NUMBER: _____ DESIGN: AEG DRAWN: TNT
 APPROVED: AEG DATE: 03/31/2010
 REVISIONS: _____ SCALE: Noted
 SHEET: _____ SHEET: **6 OF 22**

Angel Fire\SS\02-09-SS.dwg 10-02-E454