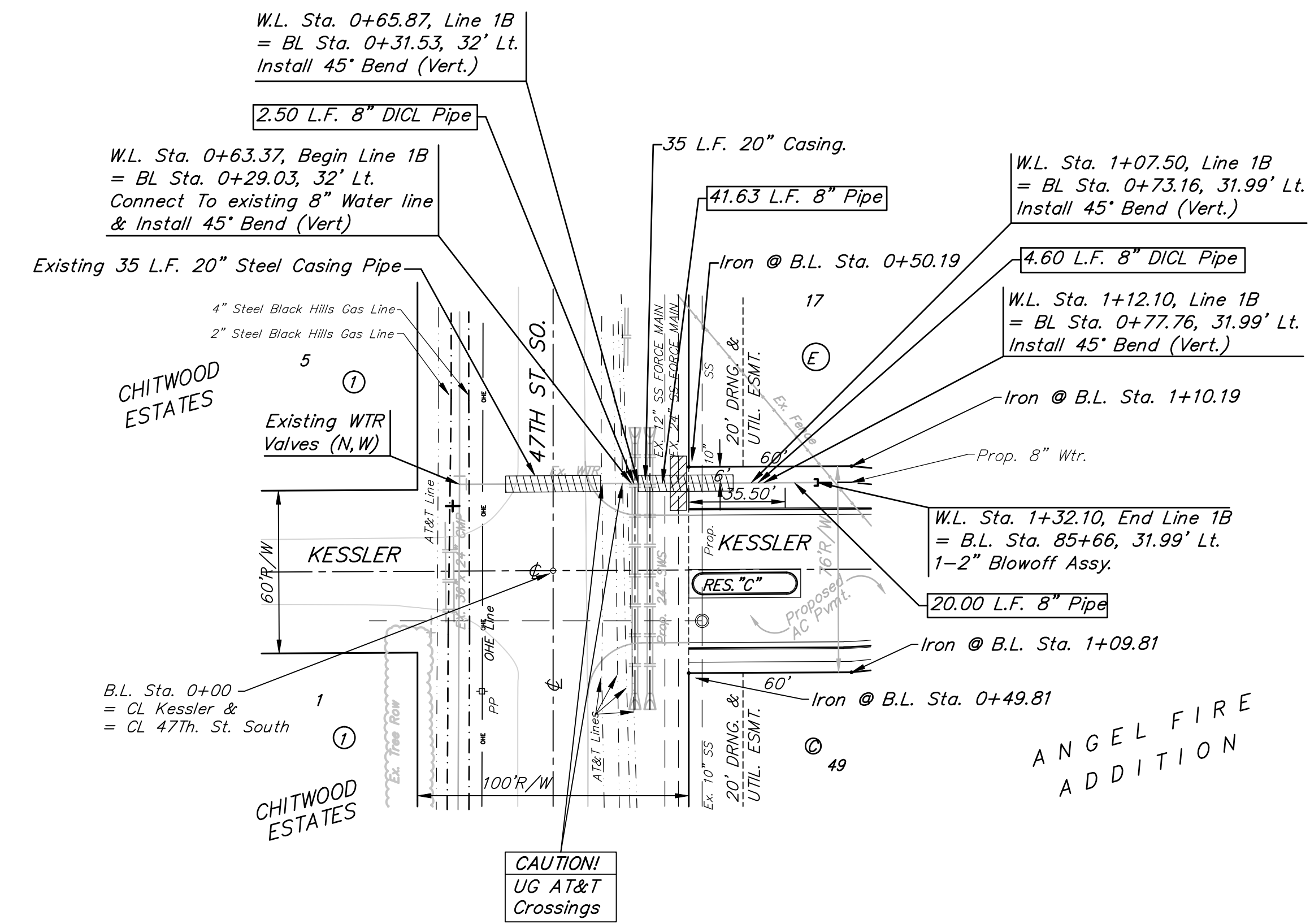
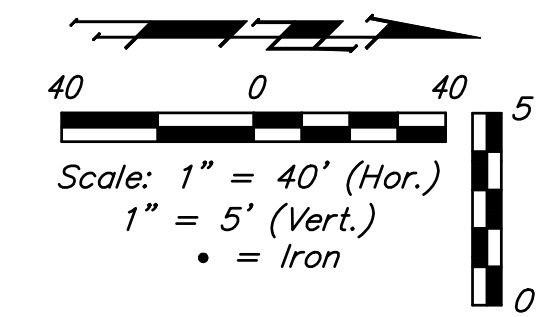


**BENCHMARKS:**  
 C.O.W. Disc SE Corner West St. & 47th S.  
 Elev. = 92.29 (City Datum)

RR Spike in N. face of power pole, SE Corner 47th So. & Kessler  
 Elev. = 91.74 (City Datum)

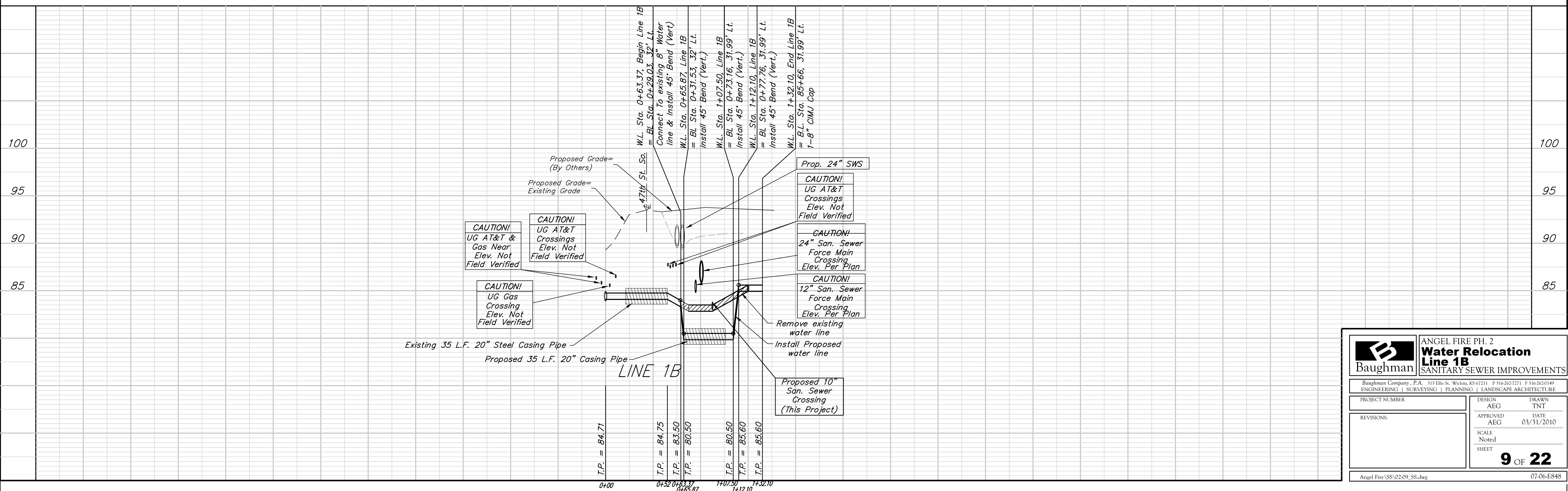
"□" Cut in Top of Curb Adjacent to the NW Corner Lot 27, Block C.  
 Elev. = 93.57 (City Datum)



**NOTE:**  
 For all Westar Crossings, Contact Lee Salisbury at (261-6859) One Week Prior to Const. to Coordinate Line Adjustment as Necessary.  
 For all Black Hills Nat. Gas Crossings, Contact Calvin Briggs (941-1608) One Week Prior to Const. to Coordinate Line Adjustment as Necessary.  
 For all Cox Comm. Crossings, Contact Brian Ring (262-4270) One Week Prior to Const. to Coordinate Line Adjustment as Necessary.  
 For all AT&T Crossings, Contact Steve Daniels at AT&T (268-2193) One Week Prior to Const. to Coordinate Line Adjustment as Necessary.

Casing Pipe may be Steel, HDPE, or any other pipe type allowed by the City of Wichita for use as Sewer Pipe

Remove Trees Only as Necessary For Construction. Cost to be included in Bid Item "Site Clearing & Restoration"  
 Contractor to Verify Gas Main, Sanitary Sewer Force Main, and AT&T Depths at Crossings Prior to Construction to allow for Water Line Adjustment by the Engineer.



<b>Baughman</b>		<b>ANGEL FIRE PH. 2</b>	
		<b>Water Relocation Line 1B</b>	
		SANITARY SEWER IMPROVEMENTS	
Baughman Company, P.A. 115 Ellis St. Wichita, KS 67211 P 316-262-7271 F 316-262-0149 ENGINEERING   SURVEYING   PLANNING   LANDSCAPE ARCHITECTURE			
PROJECT NUMBER	DESIGN	AEG	DRAWN
REVISIONS:	APPROVED	AEG	DATE
			03/31/2010
	SCALE	Noted	
	SHEET	9 OF 22	
Angel Fire\SS\02.09_SS.dwg		07-06-E848	