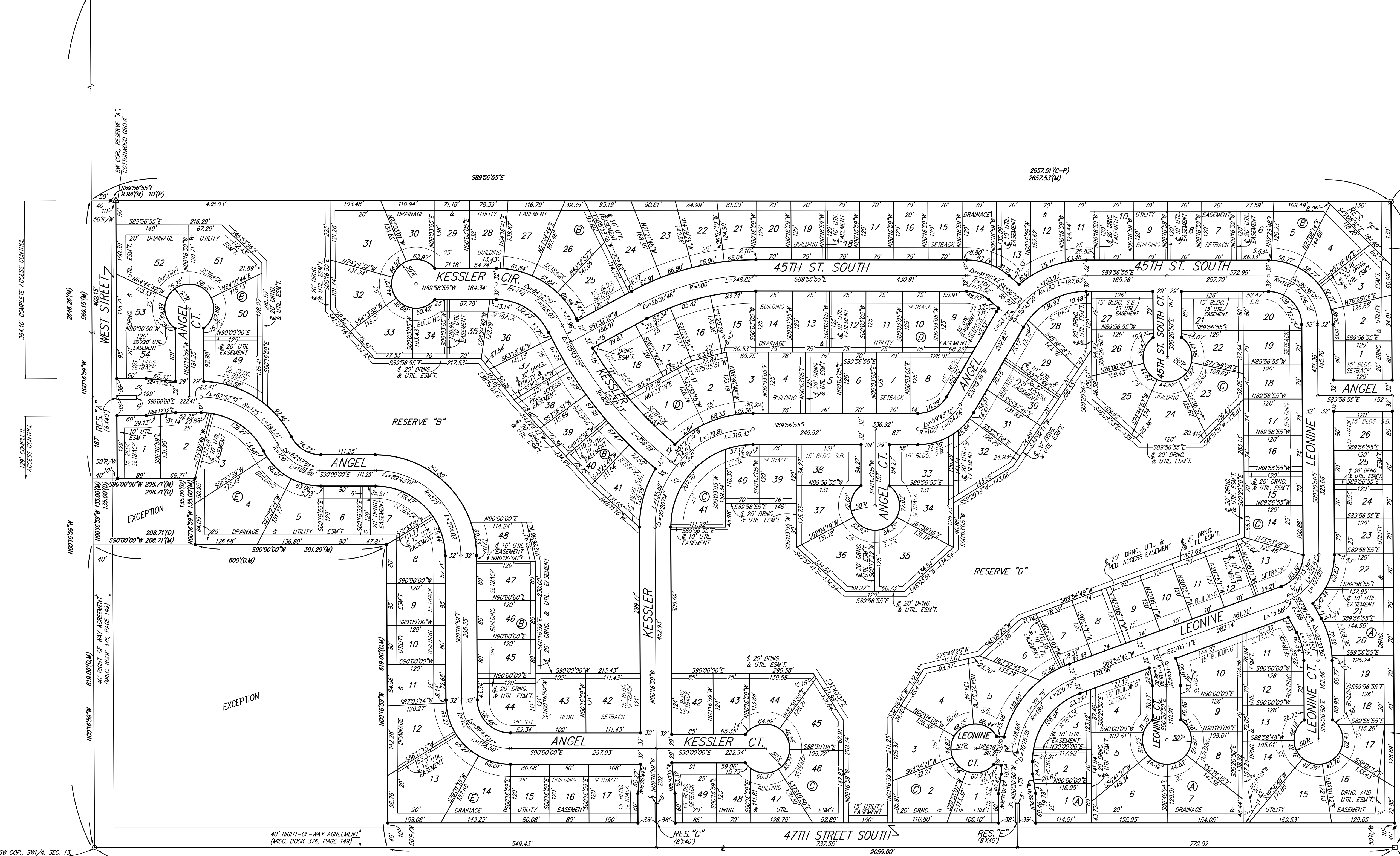


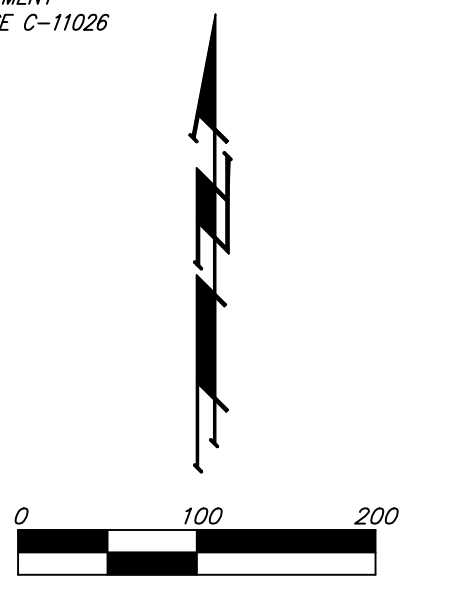
ANGEL FIRE ADDITION WICHITA, SEDGWICK COUNTY, KANSAS

NW COR., SW1/4, SEC. 13,
TWP. 28-S, R-1-W



SE COR., RESERVE "A",
JAMES PLACE

20' SEWER SYSTEM EASEMENT
PER CONDEMNATION CASE C-11026



MINIMUM BUILDING PAD ELEVATIONS FOR LOWEST OPENING TO THE STRUCTURES		
LOT	BLOCK	ELEVATION CITY DATUM
3-5	B	95.0
31-52	B	94.0
2-18	C	94.0
23-26	C	94.0
28-32	C	94.0
34-37	C	94.0
39-46	C	94.0

- = #4 REBAR W/ "BAUGHMAN" CAP (SET)
- = #4 REBAR W/ "BAUGHMAN" CAP (FOUND)
- = #4 REBAR IN THIMBLE (FOUND)
- △ = #4 REBAR W/ "MKEC" CAP (FOUND)
- = 3/4" IRON W/ "MKEC" CAP (FOUND)
- = 3/4" IRON IN THIMBLE (FOUND)

(M) = MEASURED
(P) = PLATTED
(S) = DESCRIBED
(C-P) = CALCULATED PER
PLATTED INFO.

20' SEWER SYSTEM EASEMENT
PER CONDEMNATION CASE C-11026

BENCHMARK:
CITY OF WICHITA BENCHMARK DISC - SE COR OF
INTERSECTION OF 47TH ST. S. AND WEST STREET
42.10' E. OF CENTERLINE
51.00' S. OF CENTERLINE
99.80' E. OF P.P. ON SW COR.
23.80' S. OF P.P.
ELEV. = 92.29 CITY DATUM

SW COR., SW1/4, SEC. 13,
TWP. 28-S, R-1-W

SE COR., SW1/4, SEC. 13,
TWP. 28-S, R-1-W

NOTE:
A MASTER GRADING PLAN FOR DRAINAGE HAS BEEN DEVELOPED FOR THIS
SUBDIVISION AND IS ON FILE WITH THE CITY OF WICHITA, KANSAS.
ALL DRAINAGE EASEMENTS, RIGHTS-OF-WAY, OR RESERVES SHALL REMAIN
AT ESTABLISHED GRADES OR AS MODIFIED WITH THE APPROVAL OF THE
CITY ENGINEER OF THE CITY OF WICHITA, KANSAS. NO OBSTRUCTIONS WHICH
IMPEDE THE FLOW OF THIS DRAINAGE SYSTEM SHALL BE ALLOWED.