

COLLEGE HILL POOL

SANITARY SEWER RELOCATION

PROJECT NO: 468-76-245-82989-000-000-001

INDEX CODE: 620263

GENERAL NOTES

- Traffic will not be affected by construction of this project.
- Underground utility service lines and overhead utility pole lines are to be adjusted as necessary by others prior to construction unless the plans specifically call for their adjustment by the Contractor or unless the plans specifically identify a utility to be adjusted by its owner during construction. Existing utilities and their location, as shown on the plans, represent the best information obtainable for design. Location information has been obtained from the various utility companies and is either from company record drawings or company-provided field locations. The Contractor will be required to work around existing utilities within the right-of-way which do not conflict with proposed construction.

- Rubble from the removal of miscellaneous structures and excess excavation which is to be wasted shall be disposed of on sites to be provided by the Contractor. These sites shall be approved by the Engineer as to suitability, appearance and site location. Locations that, in the opinion of the Engineer, will leave an unsightly appearance will not be approved.

All disposal sites must be approved by the Kansas Department of Health and Environment. Material either stockpiled or disposed of in a flood plain would require a Kansas State Board of Agriculture permit. Any material dumped in waters of the United States or wetlands is subject to U.S. Corps permitting regulations. Any material buried or stockpiled beyond approved of Engineers construction limits would require additional archeological investigations unless buried in a previously approved borrow location.

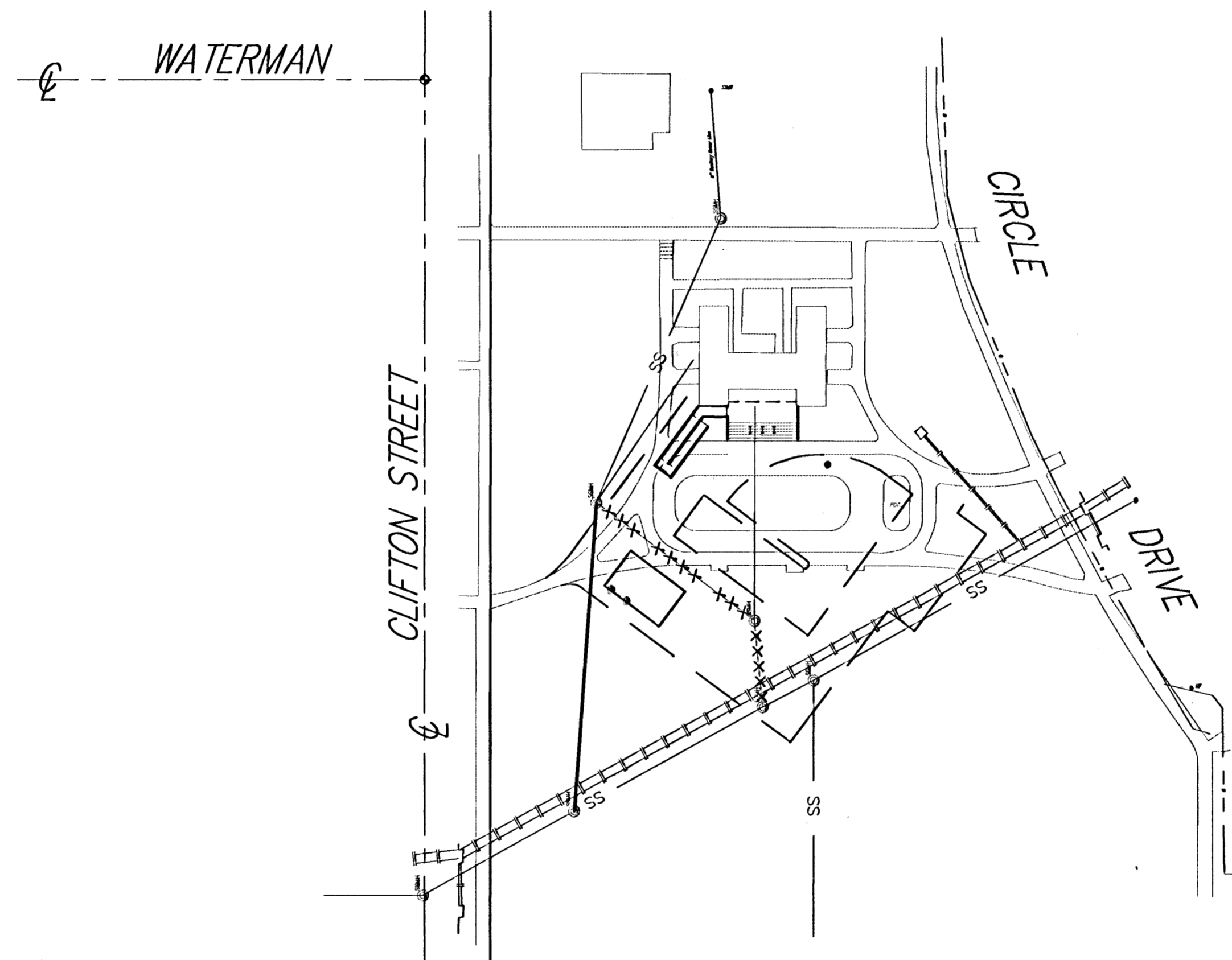
- The Contractor shall give all property owners and/or tenants of developed property directly abutting the construction of this project a minimum of ten (10) days advance notice prior to start of construction.

- The Contractor shall be responsible for preserving property irons. The Contractor will be required to re-establish any property irons which are damaged or destroyed by his construction operations. Such irons shall be re-established by a licensed land surveyor in accordance with state laws.

- Contractor will be required to provide a minimum advance notice of twenty-four (24) hours to utility companies prior to starting any excavation as follows:

Kansas One-Call 687-2470

- The Contractor shall restore all areas disturbed by construction operations in conformance with Administrative Regulation AR-78.

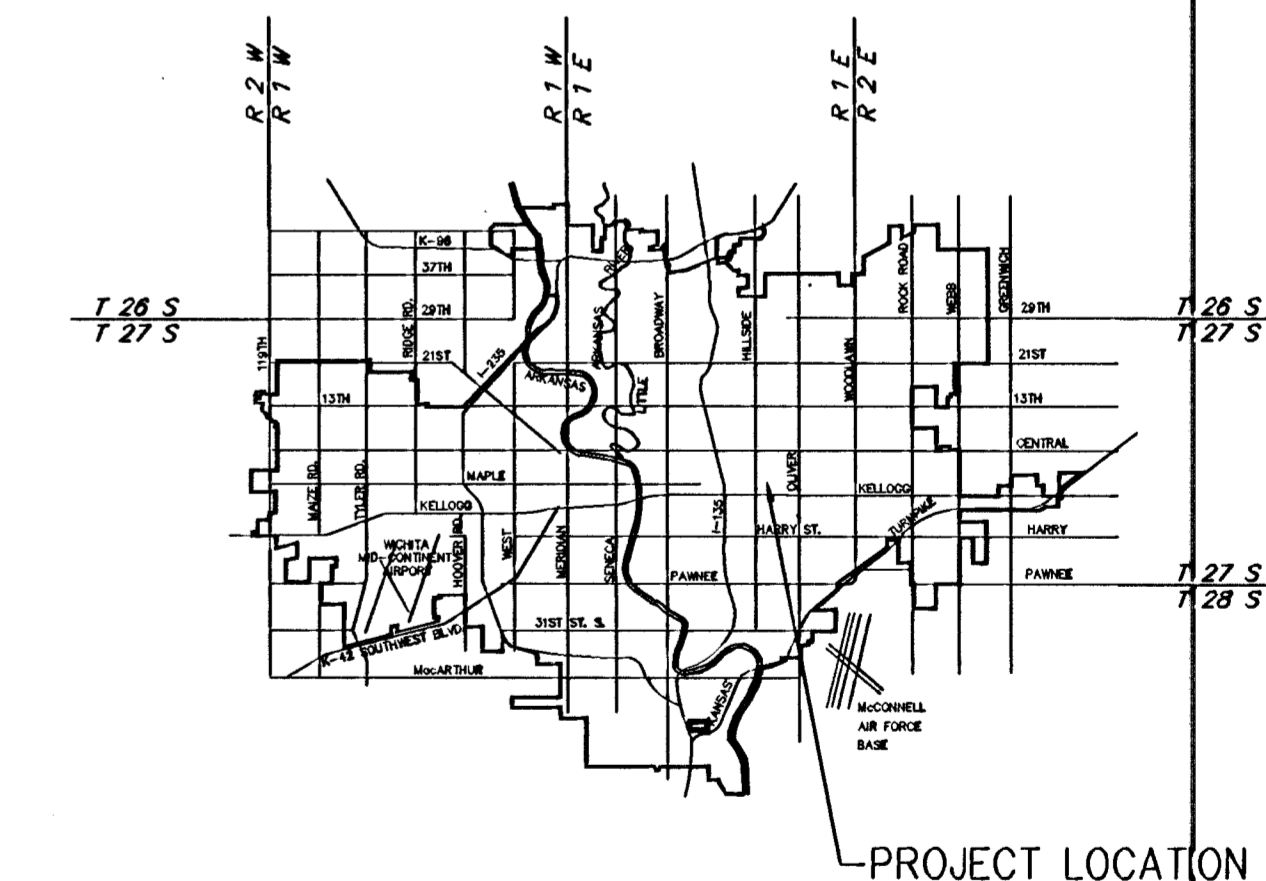


INDEX OF SHEETS

- COVER SHEET
- PLAN/PROFILE
- TYPE 'P' MANHOLE DETAILS
- SHALLOW TYPE 'P' MANHOLE DETAILS
- MANHOLE ADJUSTMENT DETAILS

BENCHMARKS

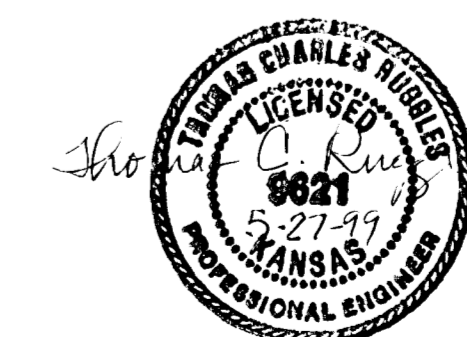
- Top of w. curb between 345 & 347 S. Clifton; elev. 139.09
- Top of thimble @ Clifton & Waterman; elev. 152.44



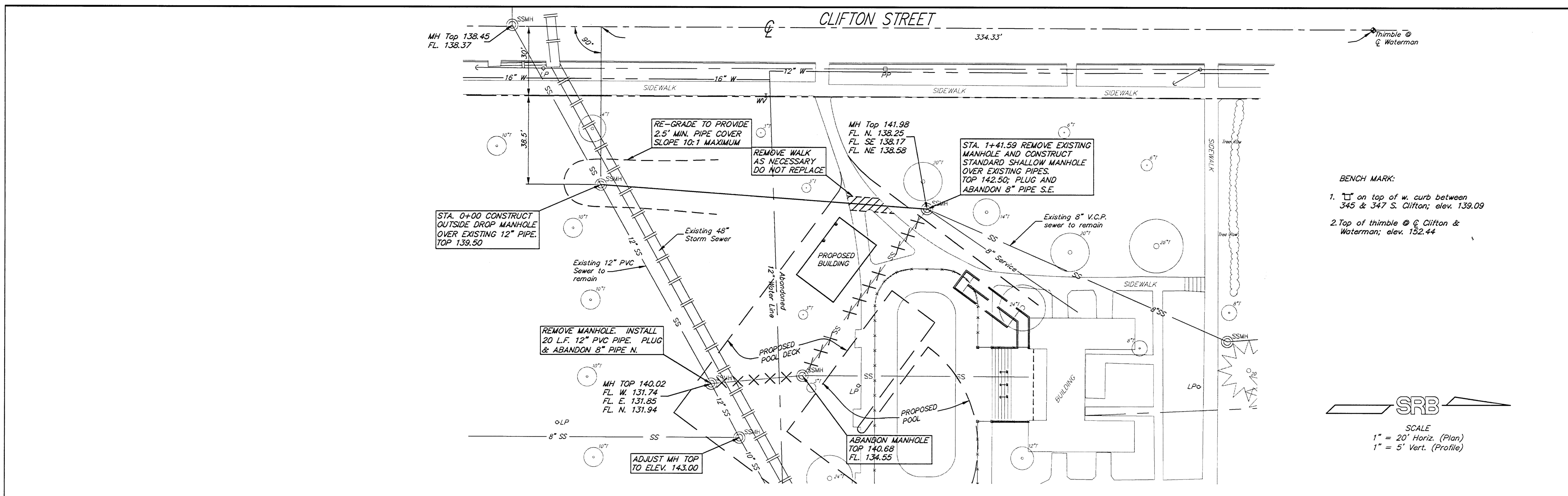
VICINITY MAP

CITY OF WICHITA, KANSAS

MICHAEL E. LINDEBAK - CITY ENGINEER

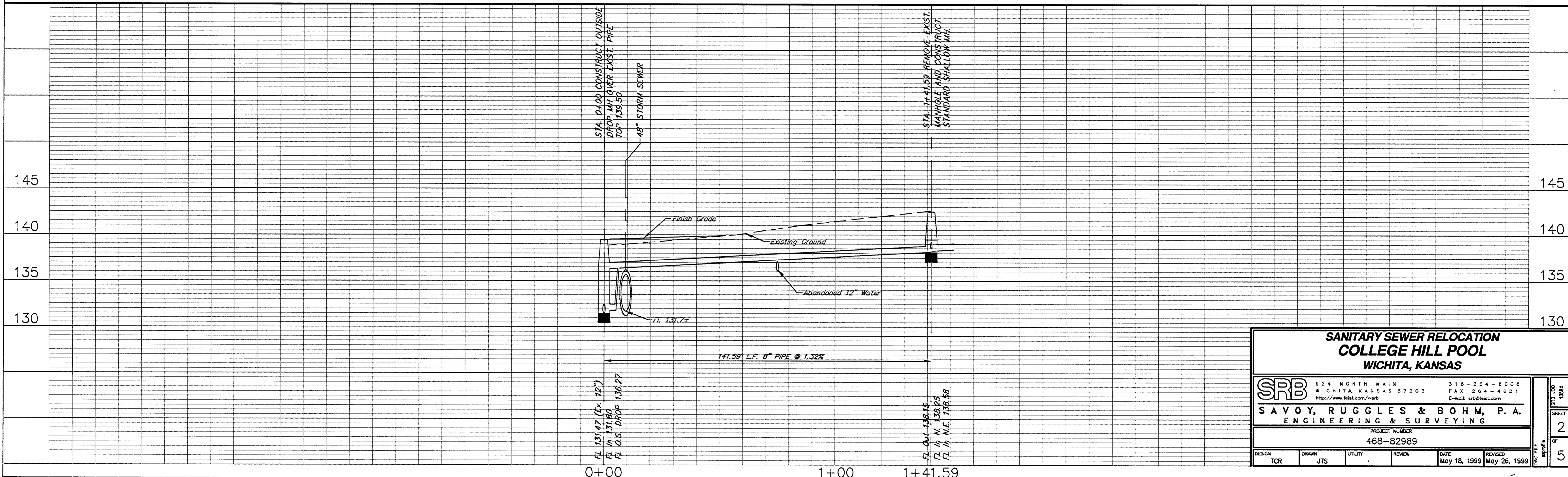


SRB 924 NORTH MAIN 316-264-8008
WICHITA, KANSAS 67203 FAX 264-4621
SAVOY, RUGGLES & BOHM, P. A.
ENGINEERING & SURVEYING

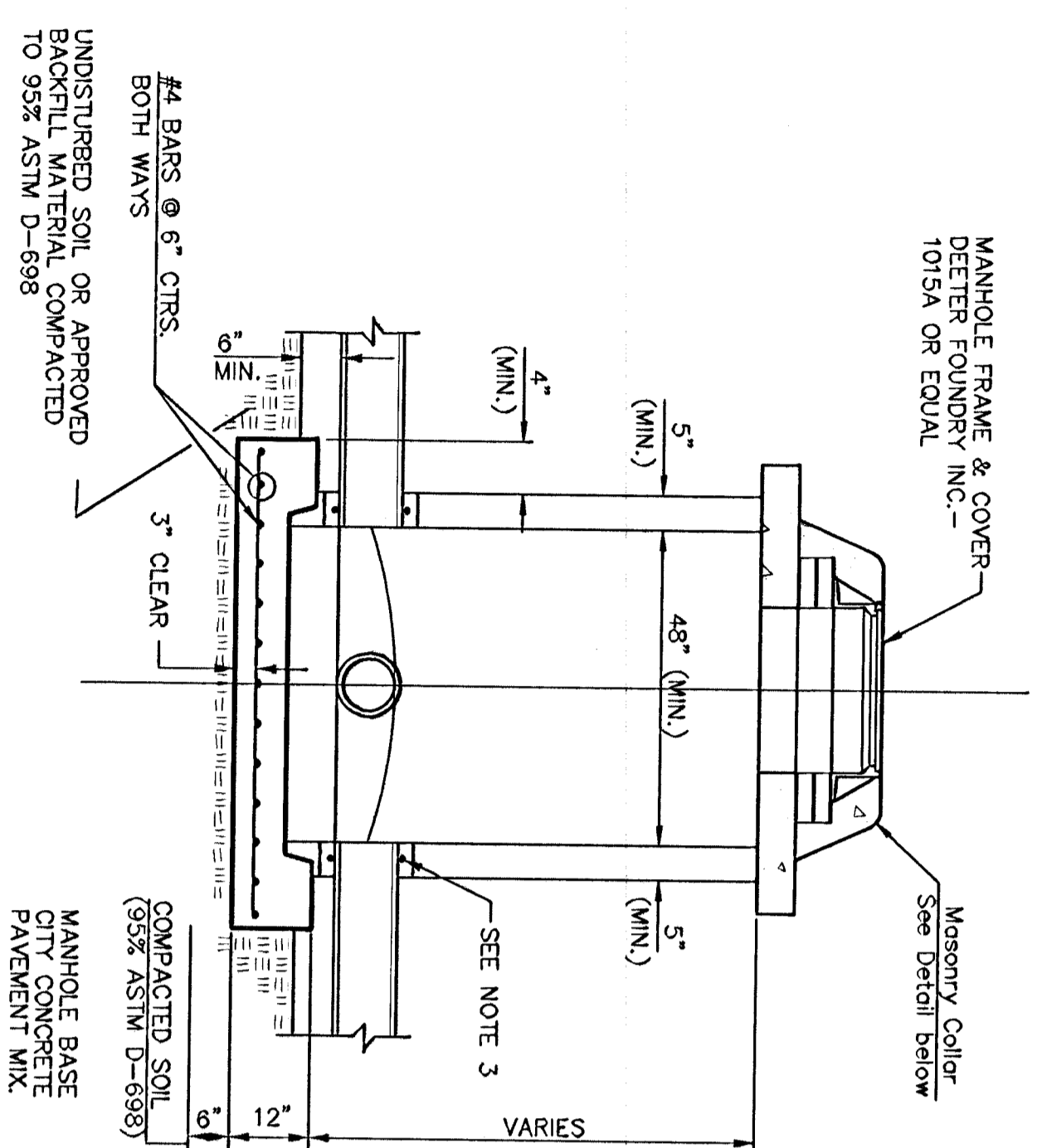


BENCH MARK:
 1. \square on top of w. curb between 345 & 347 S. Clifton; elev. 139.09
 2. Top of thimble @ Clifton & Waterman; elev. 152.44

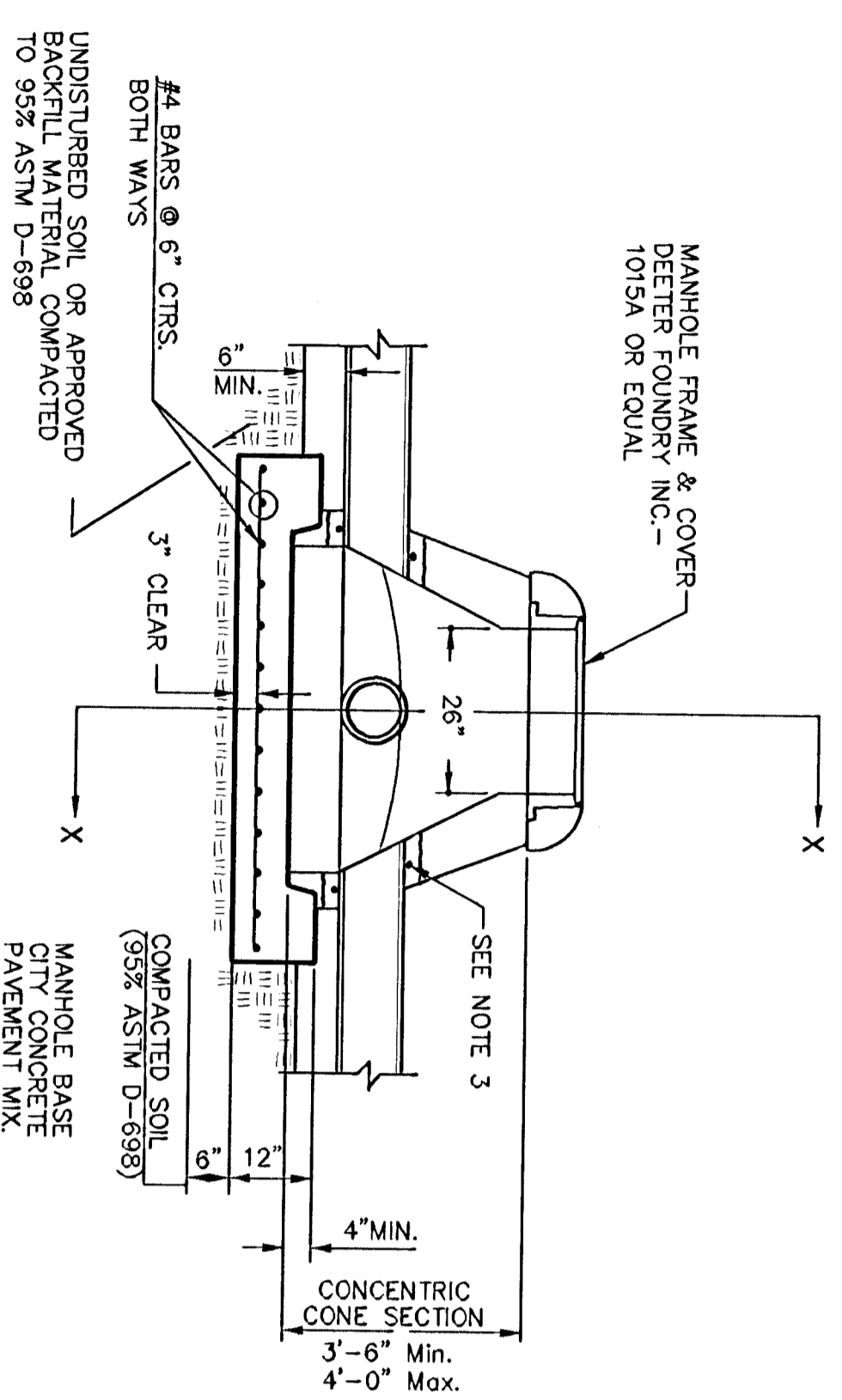
SRB
 SCALE
 1" = 20' Horiz. (Plan)
 1" = 5' Vert. (Profile)



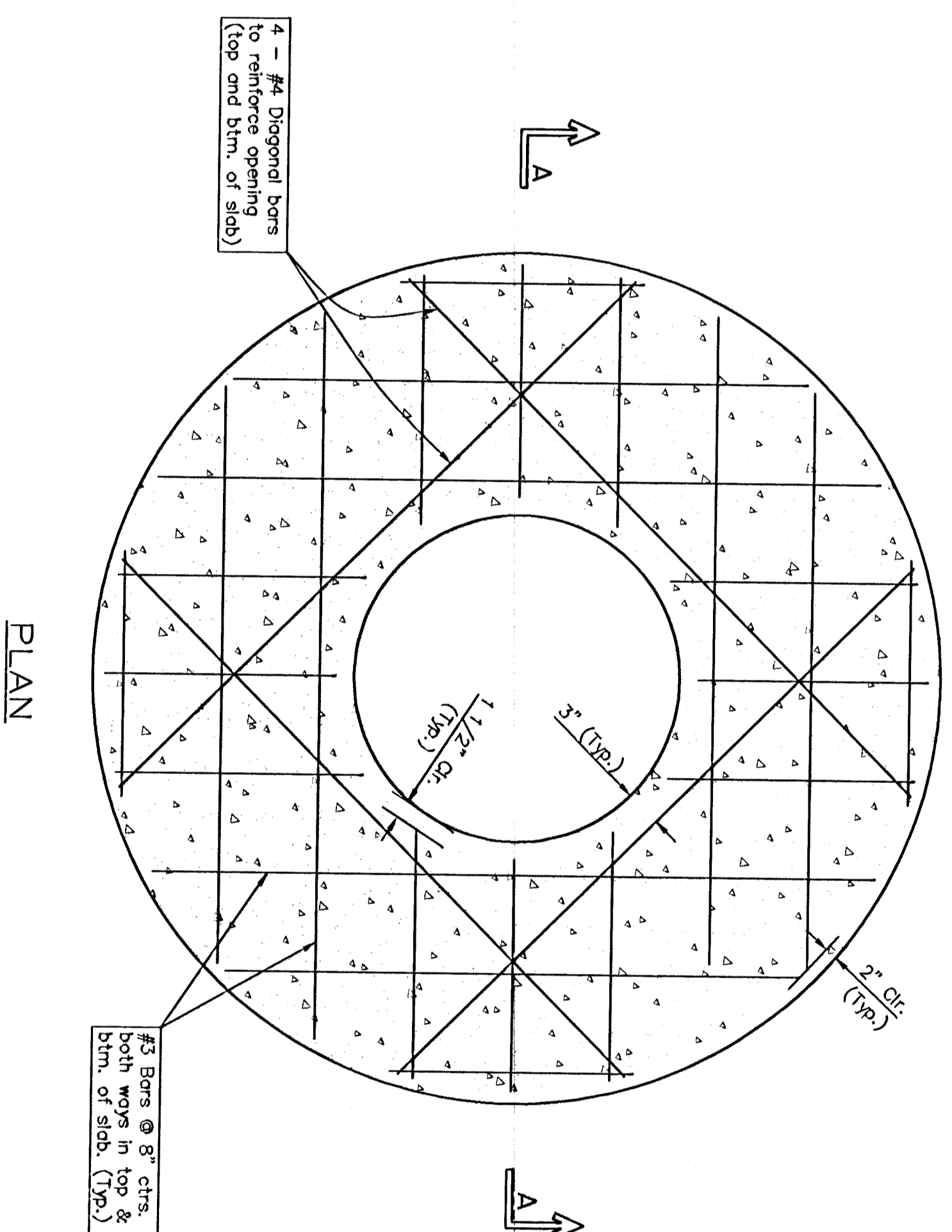
SANITARY SEWER RELOCATION COLLEGE HILL POOL WICHITA, KANSAS			
SRB		824 NORTH MAIN WICHITA, KANSAS 67203 http://www.srb.com/~srb	316-264-8008 FAX 316-442-4821 E-mail: srb@fast.com
SAVOY, RUGGLES & BOHM, P. A. ENGINEERING & SURVEYING			
PROJECT NUMBER 468-82989			
DESIGN TR	DRAWN JTS	UTILITY -	REVIEW DATE May 18, 1999 REVISED May 26, 1999



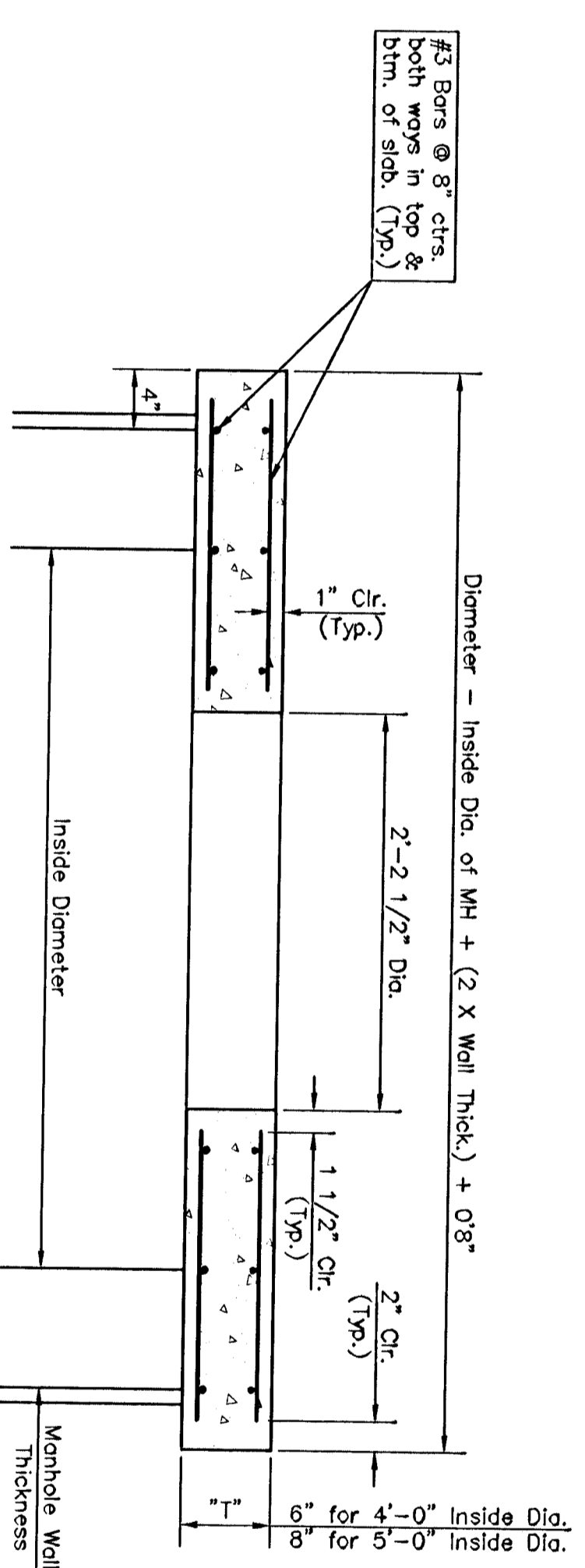
SHALLOW TYPE "P" MANHOLE



SPECIAL SHALLOW TYPE "P" MANHOLE

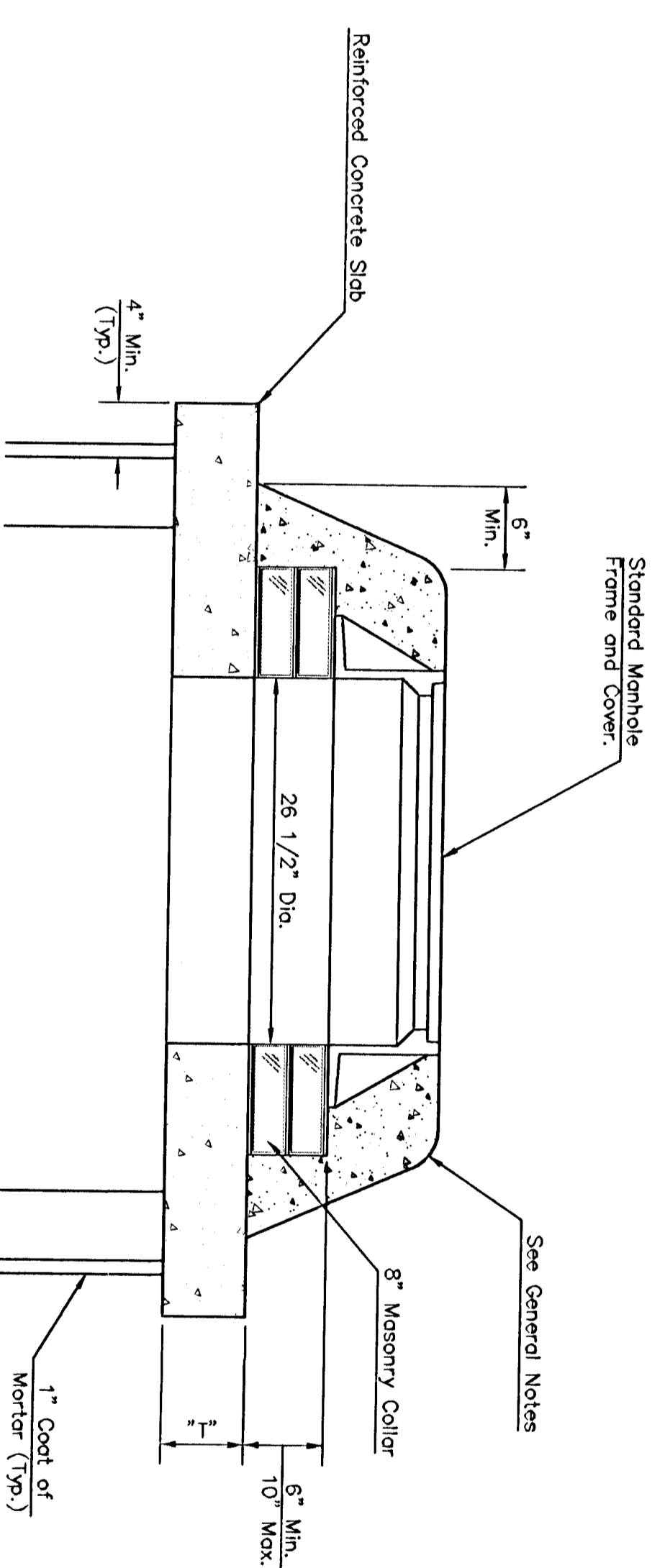


PLAN



SECTION A-A

CONCRETE SLAB DETAILS



MASONRY COLLAR DETAIL

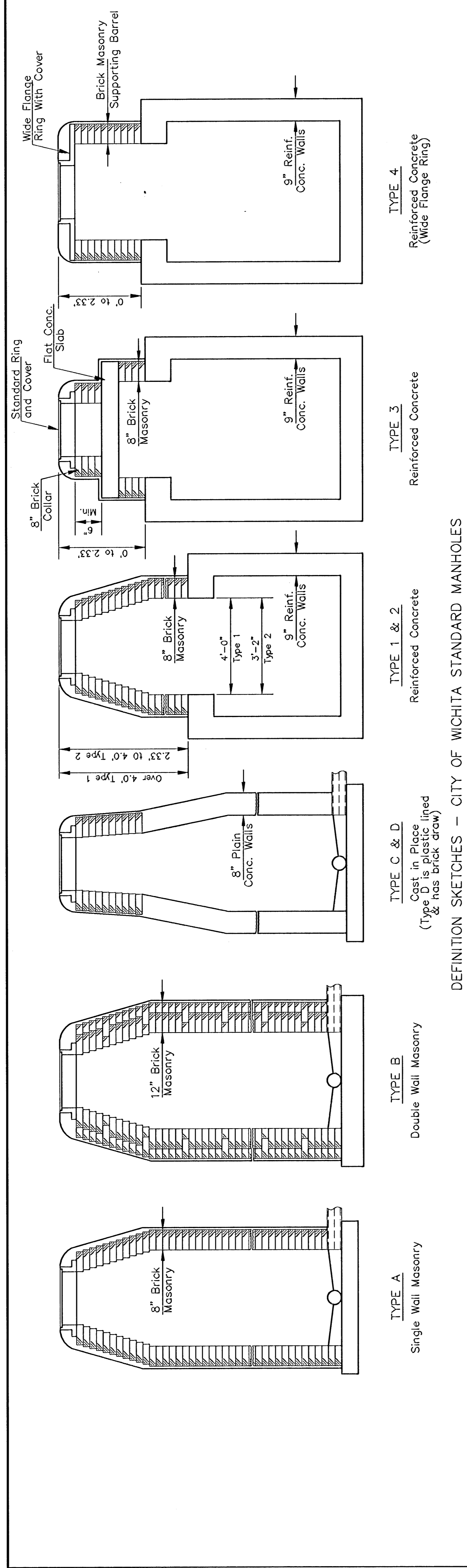
GENERAL NOTES

1. ALL PRECAST CONCRETE MANHOLE SECTIONS SHALL CONFORM TO THE LATEST REVISIONS OF A.S.T.M. C978 AS MODIFIED BY THE SPECIFICATIONS.
2. NON-SHRINK GROUT SHALL BE NON-METALLIC TYPE.
3. APPROVED FLEXIBLE WATERSTOP GASKETS SHALL BE INSTALLED TO PREVENT LEAKAGE OF WATER INTO THE MANHOLE. WHEN A B.S. COMPOSITE GASKET IS USED, THE GASKET SHALL BE GROUDED IN PLACE WITH NON-SHRINK GROUT. THE GASKET SHALL BE SUPPORTED WITH CONCRETE ENGAGEMENT AT THE JOINT FOR EACH SLAB SUCH THAT THE JOINT REMAINS FLEXIBLE.
4. ALL INSIDE SURFACES OF THE CONCRETE MANHOLE WHICH WOULD BE EXPOSED TO SEWER GAS SHALL BE COATED WITH 2 COATS' THINCOG SERIES 88 HI-BUILD EPOXY-UMC, DRY THICKNESS OF 8 MILS (MIN.) EXTERIOR MANHOLE WALLS SHALL BE COATED WITH 1 COAT MOBILAMA 850 BITUMINOUS COATING.
5. JOINT SEALING COMPOUND SHALL BE KENT SEAL NO. 2 OR APPROVED EQUAL.
6. PRECAST MANHOLES SHALL BE SET AT LEAST 4 INCHES INTO THE MASONRY WALL.
7. THE TOP OF MANHOLE FLOOR SLAB SHALL BE AT LEAST 3 INCHES BELOW THE FINISHED GRADE.
8. THE FLOW CHANNELS SHALL BE FINISHED WITH A MINIMUM THICKNESS OF SHAVED INVERT.
9. LIFTING HOLES SHALL BE FILLED WITH NON-SHRINK GROUT AND THE INTERIOR SURFACE COATED AS SPECIFIED.
10. MORTAR USED IN MASONRY CONSTRUCTION SHALL CONTAIN 8 PARTS OF CLEAN FINE SAND TO 1 PART OF PORTLAND CEMENT. MORTAR SHALL BE MIXED AND PLACED IN THE MANHOLE BASE AS SPECIFIED IN THE DRAWINGS FOR CONCRETE PAVEMENT SPECIFICATIONS USING CITY CONCRETE PAVEMENT MIX WITHOUT AIR ENTRAINMENT. MORTAR SHALL BE PLACED IN THE MANHOLE BASE AS SHOWN ON THE DRAWINGS WHEN MANHOLES ARE TO BE SET IN SWAYED AREAS. MANHOLES CONSTRUCTED WHERE PIPE SIZES ARE 24" OR LARGER SHALL HAVE A MINIMUM THICKNESS OF 5" COMPLETED MANHOLE SHALL BE WITHOUT LEAKS AND WATER.
11. REINFORCING STEEL SHALL BE INSTALLED IN THE MANHOLE BASES AND DIRECTIONS AS SHOWN ON THE DRAWINGS. ALL COSTS FOR REINFORCING AND INSTALLING REINFORCING SHALL BE INCLUDED IN THE UNIT PRICE BID FOR THE MANHOLE.
12. THE FLOORS OF ALL MANHOLES SHALL BE SHAVED WITH FLOW CHANNELS SUCH THAT THE MANHOLES WILL BE SET CLEANING AND FREE OF AREAS WHICH WOULD CAUSE OBSTRUCTION TO THE FLOW OF SEWERAGE. THE MANHOLE SHALL BE FINISHED TO MATCH TO THE BOTTOM HALVES OF THE INCOMING AND OUTGOING MANHOLES. FLOW CHANNELS FOR INSIDE DROP MANHOLES SHALL BE CONSTRUCTED AS INDICATED BY THE DRAWING. AREAS OUTSIDE OF THE FLOW CHANNELS SLOPED TOWARD THE TOP HALF OF THE MANHOLE SHALL BE SAVED AROUND THE TOP HALF OF THE MANHOLE WHICH FORMS THE FLOW CHANNEL.
13. PRECAST MANHOLES SHALL BE INSTALLED IN THE MANHOLE BASES AND DIRECTIONS AS SHOWN ON THE DRAWINGS. ALL COSTS FOR REINFORCING AND INSTALLING REINFORCING SHALL BE INCLUDED IN THE UNIT PRICE BID FOR THE MANHOLE.
14. MANHOLE CONSTRUCTION AND MANHOLE FRAME CASTINGS SHALL CONFORM TO THE REQUIREMENTS AND MANHOLE CONSTRUCTION SHALL CONFORM AND AS SHOWN IN THE STANDARD DETAIL DRAWING.
15. ALL BRICK USED IN MANHOLE CONSTRUCTION SHALL MEET GRADE SW OF ASTM D582 OR D582-87.

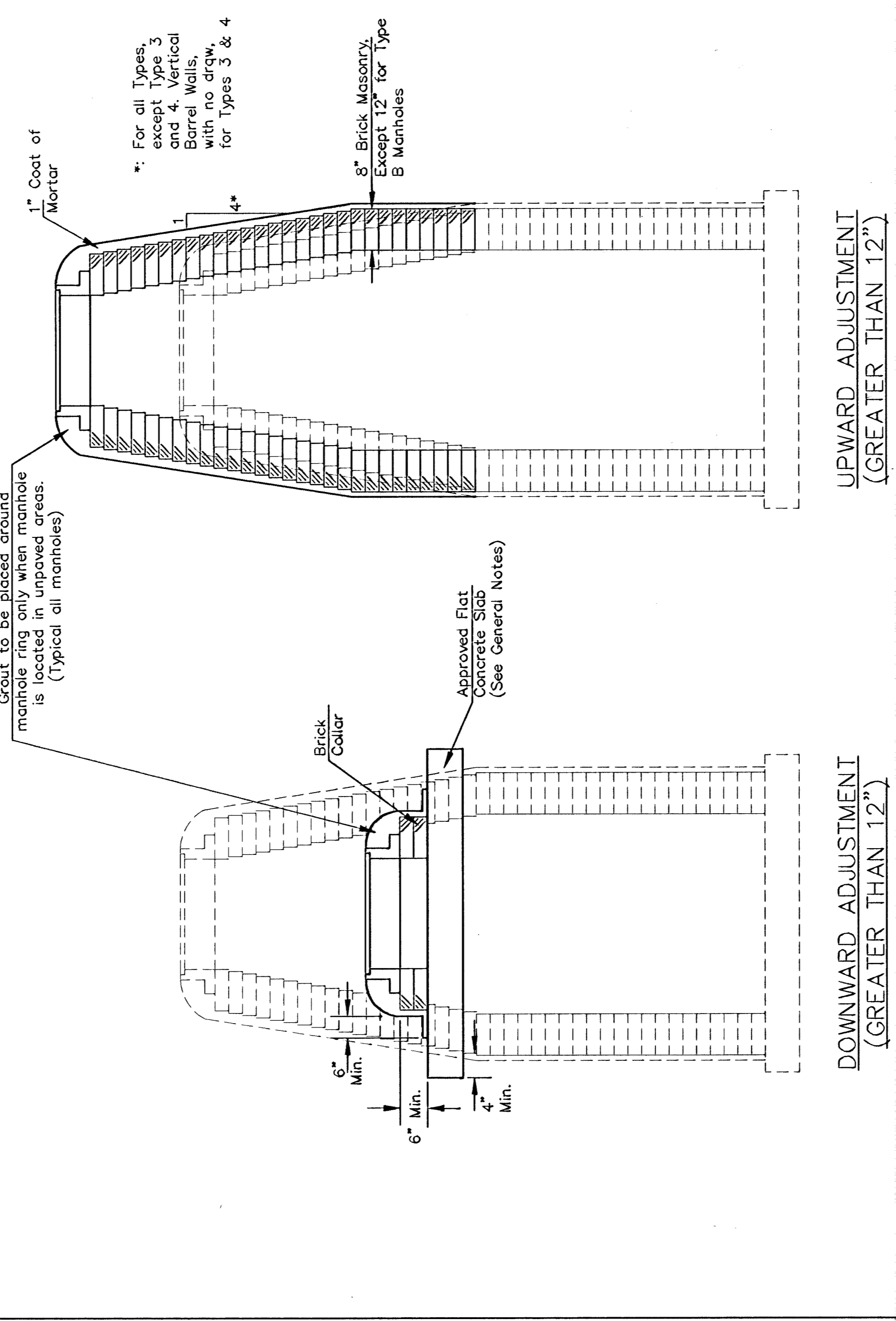
SANTARY SEWER RELOCATION
SHALLOW TYPE 'P' MANHOLE DETAILS
WICHITA, KANSAS

SRB
924 NORTH WINT
WICHITA, KANSAS 67203
316-264-8008
316-264-8009
http://www.srbks.com
SAVOY, RUGGLES & BOHM, P.A.
ENGINEERING & SURVEYING
4888-82989

NO.	DATE	BY	CHKD.	REV.
1				
2				
3				
4				
5				



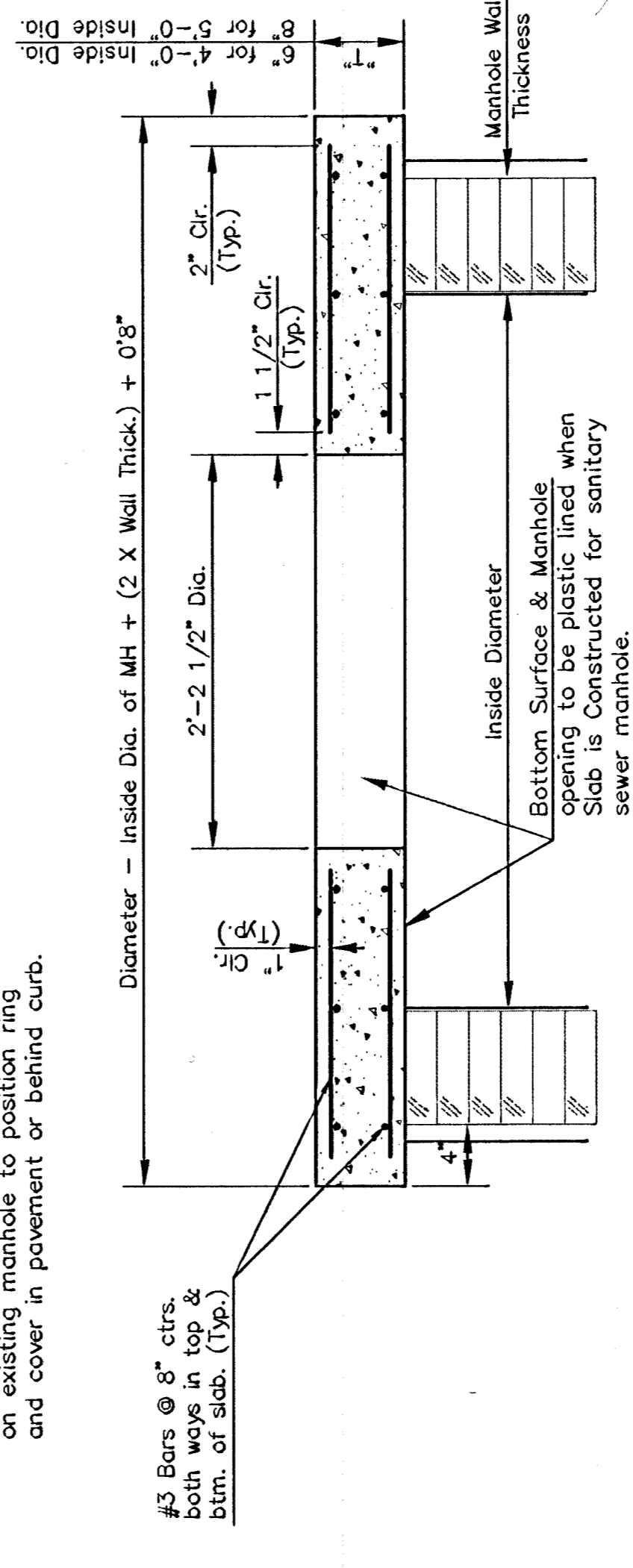
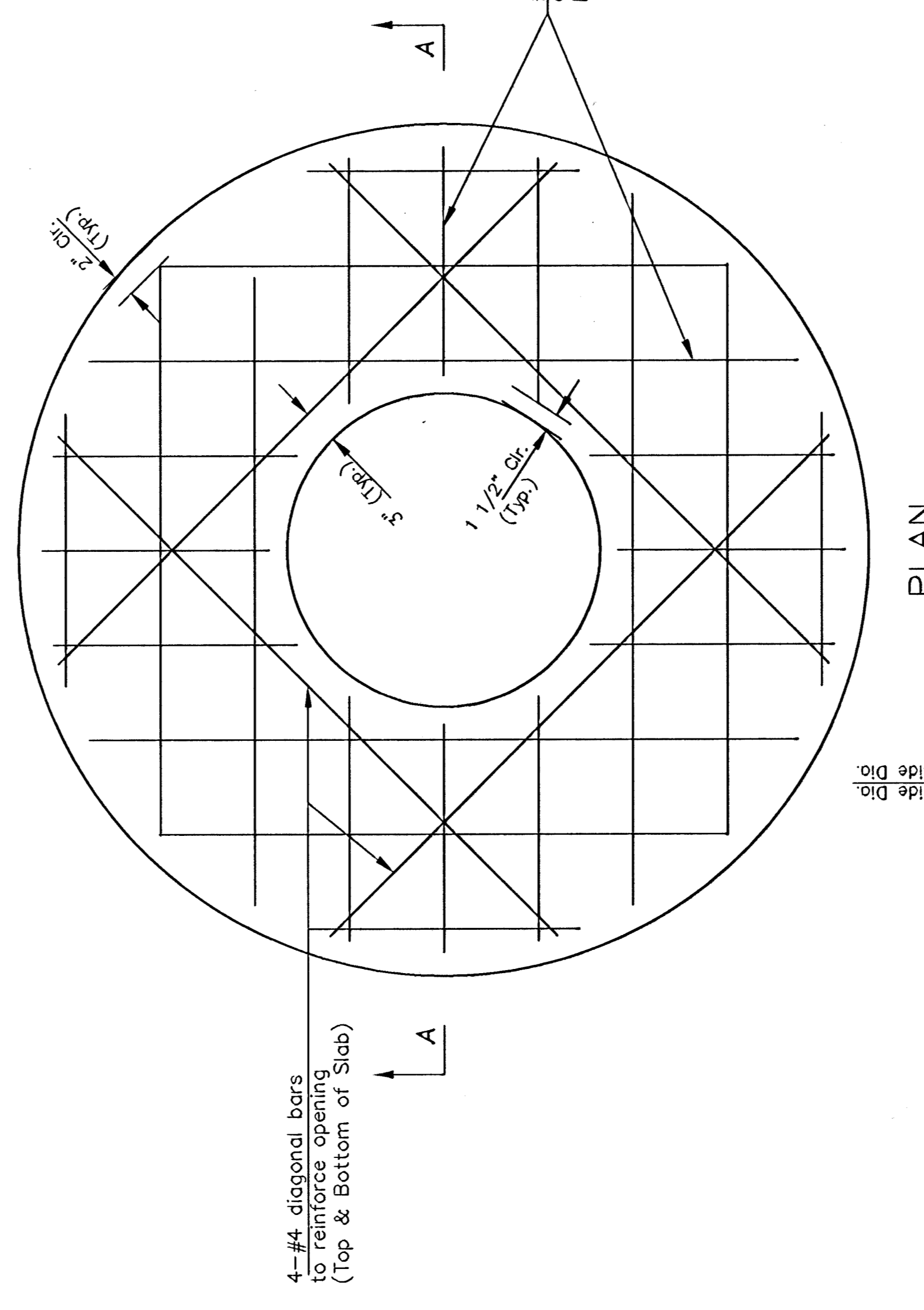
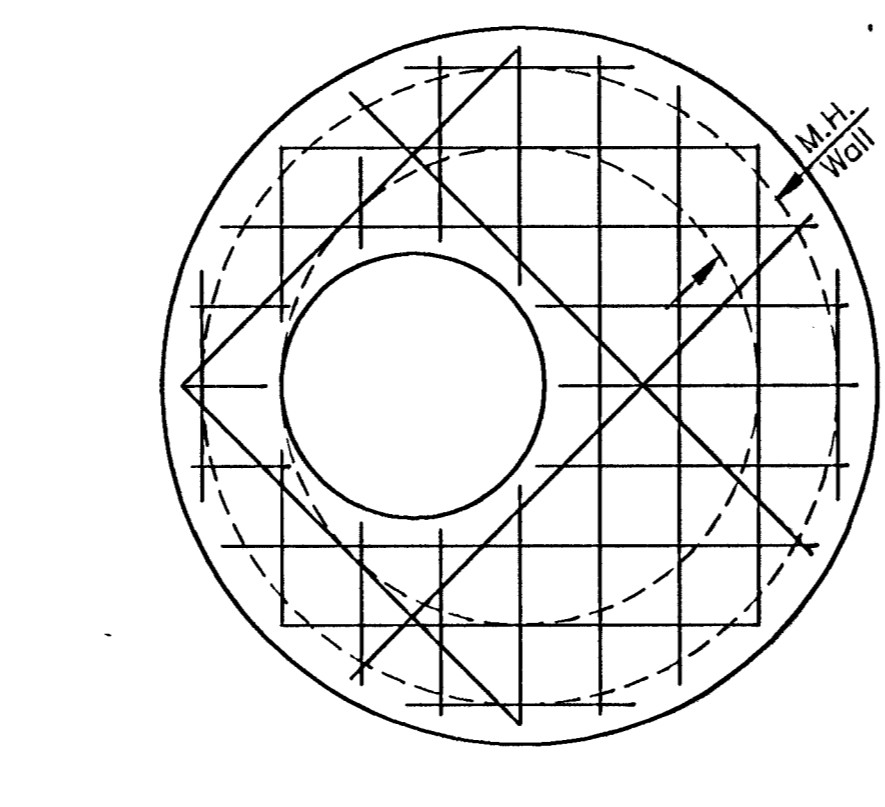
DEFINITION SKETCHES - CITY OF WICHITA STANDARD MANHOLES



THE APPROPRIATE PORTIONS OF THE DRAW AND BARREL OF TYPE A, B, C, D, 1 AND 2 MANHOLES SHALL BE REMOVED. A FLAT CONCRETE SLAB SHALL BE RAISED TO THE RING AND COVER SETTING THE WIDE FLANGE RING OR FLAT CONCRETE SLAB AND RING. ALL WORK AND MATERIALS SHALL CONFORM TO THE DETAILS SHOWN AND THE GENERAL NOTES.

COURSES OF BRICK BARREL SUPPORTING THE WIDE FLANGE RING OR TYPE 4 MANHOLES AND FLAT CONCRETE SLAB FOR TYPE 3 MANHOLES SHALL BE RAISED TO THE RING AND COVER SETTING THE WIDE FLANGE RING OR FLAT CONCRETE SLAB AND RING. ALL WORK AND MATERIALS SHALL CONFORM TO THE DETAILS SHOWN AND THE GENERAL NOTES.

THE ENTIRE DRAW OF TYPES A, B, C, D, 1 AND 2 MANHOLES SHALL BE REMOVED. THE MANHOLE BARREL RAISED THE APPROPRIATE PORTIONS OF THE DRAW AND COVER SHALL BE REMOVED. THE UPPER PORTION OF TYPE 3 MANHOLES SHALL BE REMOVED TO THE BOTTOM OF THE FLAT CONCRETE SLAB. THE BRICK MASONRY BARREL SUPPORTING THE SLAB SHALL BE RAISED THE APPROPRIATE AMOUNT, AND THE SLAB AND RING AND COVER RESET. THE WIDE FLANGE RING AND COVER OF MANHOLES SHALL BE RAISED THE APPROPRIATE AMOUNT AND THE RING AND COVER RESET. ALL ADJUSTMENT OF ANY MANHOLE SHALL BE ACCOMPLISHED WITH BRICK MASONRY IN ACCORDANCE WITH THE DETAILS SHOWN AND THE GENERAL NOTES.



*: To be used only if necessary to keep ring and cover from conflicting with existing manhole. Flat concrete slab shall be rotated on existing manhole to position ring and cover in pavement or behind curb.

THE CITY OF WICHITA

CITY ENGINEER'S OFFICE
1001 SOUTH MAIN STREET
WICHITA, KANSAS 67202

MANHOLE ADJUSTMENT DETAILS

M. E. LINDEBAK P.E. - CITY ENGINEER
PROJ. NO. 468-82888
DATE: MAR 96

DATE: MAR 96
SHEET 5 OF 5