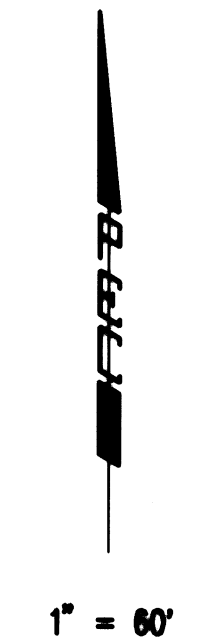
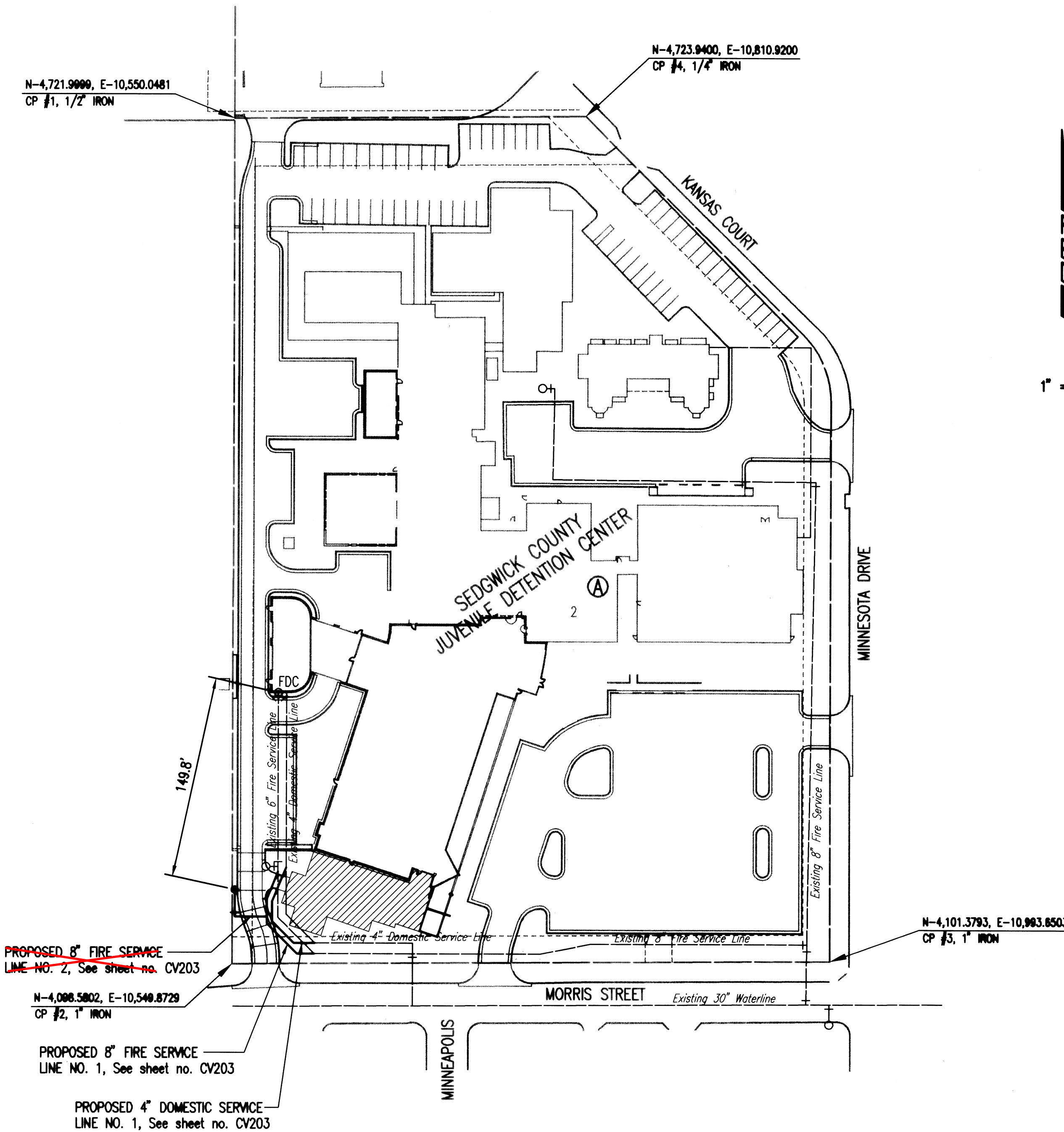


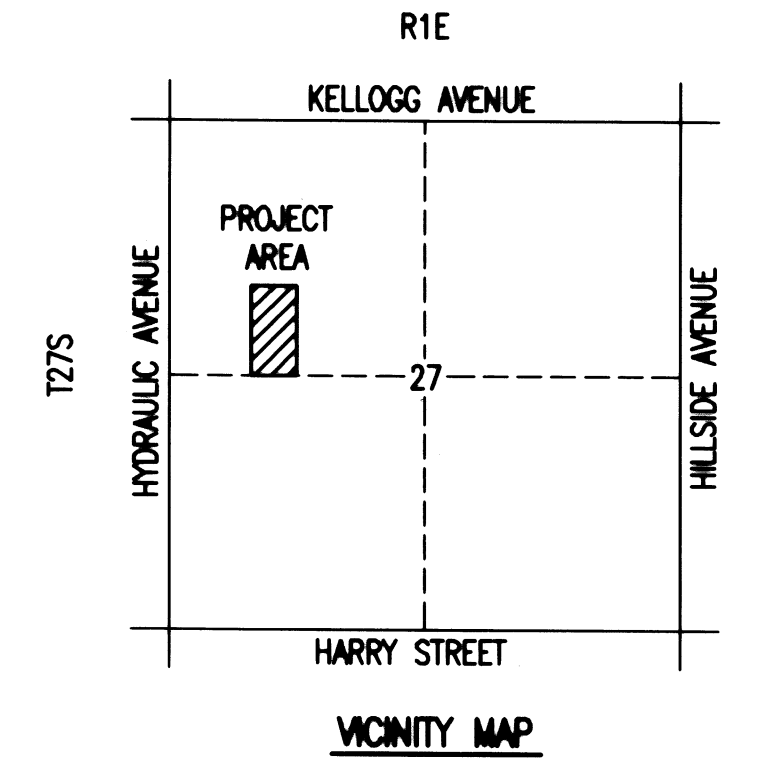
GENERAL NOTES

- ALL ELEVATIONS SHOWN ARE CITY OF WICHITA DATUM. (U.S.G.S. - 1187.4 = CITY DATUM)
- CONTRACTOR WILL BE REQUIRED TO PROVIDE A MINIMUM ADVANCE NOTICE OF SEVENTY-TWO (72) HOURS TO UTILITY COMPANIES PRIOR TO STARTING ANY EXCAVATION AS FOLLOWS:
 KANSAS ONE-CALL 687-2470
 THE CONTRACTOR MUST NOTIFY THE FOLLOWING IN CASE OF AN EMERGENCY:
 COX COMMUNICATIONS 262-0661
 KANSAS GAS SERVICE 1(888)-482-4950
 WESTAR ENERGY 383-8600
 BLACK HILLS ENERGY 1(800)-527-0357
 AT&T 1(800)-870-8390
 CITY OF WICHITA WATER DEPARTMENT 262-6000
 CITY OF WICHITA SEWER MAINTENANCE 262-6000
- ALL WATER MAINS AND APPURTENANCES SHALL BE INSTALLED IN ACCORDANCE WITH CITY OF WICHITA, KANSAS STANDARD SPECIFICATIONS.
- THE WATER MAIN SHALL BE CONSTRUCTED ON THE ALIGNMENT SHOWN BY THE PLANS. TREES AND SHRUBS IN PUBLIC RIGHT-OF-WAY WHICH ARE IN DIRECT CONFLICT WITH PROPOSED NEW CONSTRUCTION SHALL BE REMOVED BY THE CONTRACTOR WITH THE ENGINEER'S APPROVAL. TREES AND SHRUBS WHICH ARE NOT IN DIRECT CONFLICT WITH PROPOSED NEW CONSTRUCTION SHALL BE SAVED AND PROTECTED FROM DAMAGE.
- OPENING AND CLOSING WATER VALVES SHALL BE DONE SLOWLY TO PREVENT DAMAGE TO THE WATER DISTRIBUTION SYSTEM FROM WATER HAMMER. ALL VALVES CLOSED BY THE CONTRACTOR MUST BE REOPENED AS NEW CONSTRUCTION PERMITS. PROJECT INSPECTOR MUST ASCERTAIN THAT ANY VALVE CLOSED BY THE CONTRACTOR IS REOPENED. CONTRACTOR WILL BE PERMITTED TO OPERATE WATER VALVES ONLY WHEN THE PROJECT INSPECTOR ASSIGNED TO THE PROJECT IS PRESENT.
- THE CONTRACTOR SHALL NOT START WORK ON THE PROJECT UNTIL THE PROJECT INSPECTOR IS ASSIGNED TO THE PROJECT AND IS PRESENT ON THE SITE. ANY WORK DONE WITHOUT INSPECTION WILL BE REQUIRED TO BE UNCOVERED FOR INSPECTION.
- THE CONTRACTOR SHALL GIVE ALL PROPERTY OWNERS AND/OR TENANTS OF DEVELOPED PROPERTY DIRECTLY ADJACENT TO THE CONSTRUCTION OF THIS PROJECT A MINIMUM OF TEN (10) DAYS ADVANCE NOTICE PRIOR TO START OF CONSTRUCTION.
- THE CONTRACTOR SHALL BE RESPONSIBLE FOR PRESERVING PROPERTY IRONS. THE CONTRACTOR SHALL BE REQUIRED TO RE-ESTABLISH ANY PROPERTY IRONS WHICH ARE DAMAGED OR DESTROYED BY HIS CONSTRUCTION OPERATIONS. SUCH IRONS SHALL BE RE-ESTABLISHED BY A LICENSED LAND SURVEYOR IN ACCORDANCE WITH STATE LAWS.
- THE CONTRACTOR SHALL RESTORE ALL DITCHES, SMALES, ROAD SHOULDERS, ENTRANCES, AND BANKLINES TO THEIR ORIGINAL SLOPES AND GRADES EXCEPT AS SHOWN OTHERWISE.
- INTERURBAN TRAFFIC GENERATED OUTSIDE THE PROJECT AREA AND LOCAL BUSINESS OR RESIDENTIAL TRAFFIC GENERATED WITHIN THE PROJECT AREA ARE TO BE CARRIED THROUGH CONSTRUCTION AS FURTHER PROMULGATED BY PROJECT SPECIAL PROVISIONS. THE CONTRACTOR SHALL UTILIZE BARRICADES, SIGNS, GUARDS, AND FLAGMEN IN ACCORDANCE WITH THE MANUAL ON UNIFORM TRAFFIC CONTROL DEVICES.
- RUBBLE FROM THE REMOVAL OF MISCELLANEOUS STRUCTURES INCLUDING ANY TREES REMOVED AND TREE TRIMMINGS AND EXCESS EXCAVATED MATERIAL SHALL BE DISPOSED OF ON SITES PROVIDED BY THE CONTRACTOR. THESE SITES SHALL ALSO BE APPROVED OF BY THE ENGINEER AS TO SUITABILITY, APPEARANCE, AND SITE LOCATION. LOCATIONS THAT, IN THE OPINION OF THE ENGINEER, LEAVE AN UNSIGHTLY APPEARANCE WILL NOT BE APPROVED. ALL DISPOSAL SITES MUST BE APPROVED BY THE KANSAS DEPARTMENT OF HEALTH AND ENVIRONMENT. MATERIAL EITHER STOCKPILED OR DISPOSED OF IN A FLOOD PLAIN WILL REQUIRE A KANSAS STATE BOARD OF AGRICULTURE PERMIT. ANY MATERIAL DUMPED IN WATERS OF THE UNITED STATES OR WETLANDS IS SUBJECT TO U.S. CORPS OF ENGINEERS PERMITTING REGULATIONS. ANY MATERIAL BURIED OR STOCKPILED BEYOND APPROVED CONSTRUCTION LIMITS MAY REQUIRE ARCHAEOLOGICAL INVESTIGATIONS UNLESS BURIED IN A PREVIOUSLY APPROVED DISPOSAL LOCATION.
- ALL EXCESS EXCAVATION WHICH IS TO BE WASTED SHALL BE REMOVED OFF SITE.
- ALL LAWN/TURF AREAS DISTURBED BY CONSTRUCTION SHALL BE SODED. REFERENCE LANDSCAPE PLANS.
- THE CONTRACTOR SHALL INSTALL AND MAINTAIN EROSION CONTROL METHODS USING THE BMP DETAILS. PLACEMENT AND LOCATIONS OF BMP'S SHALL BE THE SOLE RESPONSIBILITY OF THE CONTRACTOR.



LEGEND

EXISTING WATER MAIN	---
PROPOSED WATER MAIN	—+—
EXISTING WATER VALVE	—+—
PROPOSED WATER VALVE	—+—
EXISTING FIRE HYDRANT	⊙
PROPOSED FIRE HYDRANT	⊙
EXISTING BLOW OFF	—+—
PROPOSED BLOW OFF	—+—
PROPOSED HYDRANT TEE w/FUTURE FIRE HYDRANT	⊙



BENCH MARK - CITY OF WICHITA DISC, HYDRAULIC AND ORME, 43 FEET EAST OF THE CENTER LINE OF HYDRAULIC, 3.1 FEET EAST OF THE EAST FACE OF SIDEWALK, 5.9 FEET NORTH OF THE NORTH LINE OF CONCRETE DRIVE, 12.1 FEET SOUTHEAST OF CENTER OF PARKING LOT LIGHT POLE. ELEVATION = 105.54 (CITY DATUM)

NOTE: WATERLINE VALVES TO BE OPERATED BY CONTRACTOR ONLY IF WATER DEPARTMENT REPRESENTATIVE IS ON SITE.

SURVEY PROVIDED BY BAUGHMAN COMPANY P.A.

No.	Revision	By	Date
WATER DISTRIBUTION SYSTEM IMPROVEMENTS ADDITIONAL COURTROOM AND CHAMBERS IN JUVENILE COURTHOUSE WICHITA, KANSAS KEY MAP AND GENERAL NOTES JAMES L. ARMOUR, P.E. - CITY ENGINEER PRIVATE PROJECT NO. 1484 PPW (607853)			
Professional Engineering Consultants, P.A. 303 S. TOPEKA • WICHITA, KANSAS 67202 316-262-2691 • FAX 316-262-3003			
Designed by	DWH	Job No.	35-02116-009
Drawn by	NCL	Date	OCTOBER 2009
			SH. CU201

Saved 10-07-2009 4:46:30 PM by NCL
 Plot Scale 1:60 10-19-2009 10:03:46 AM
 07/2002/02116/009/PPW/02116-009-C-Key Map

CITY OF WICHITA PROJECT NO. 1484 PPW (607853)