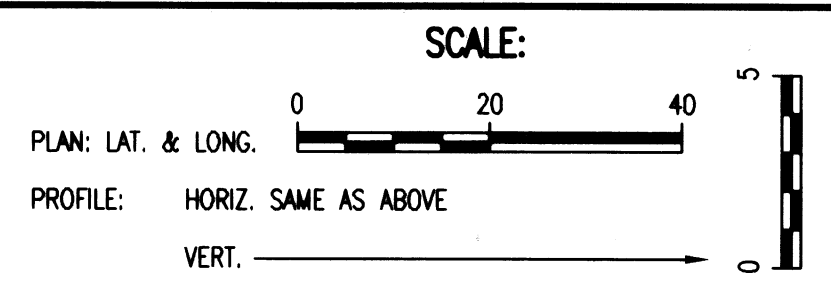
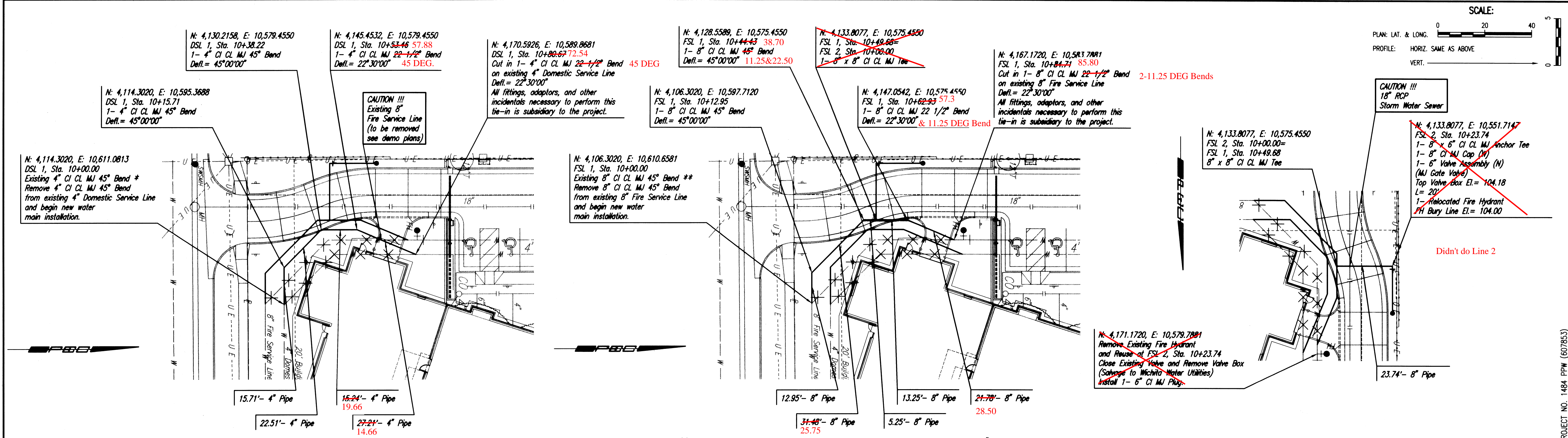


DATE	
BY	
CHECKED	CHECKED
PLAN	

DATE	
BY	
CHECKED	CHECKED
PROFILE	

Saved 10-07-2009 4:46:25 PM by: NCL  
 C:\Users\NCL\Documents\PPW\02115-009-C-W\PPW01

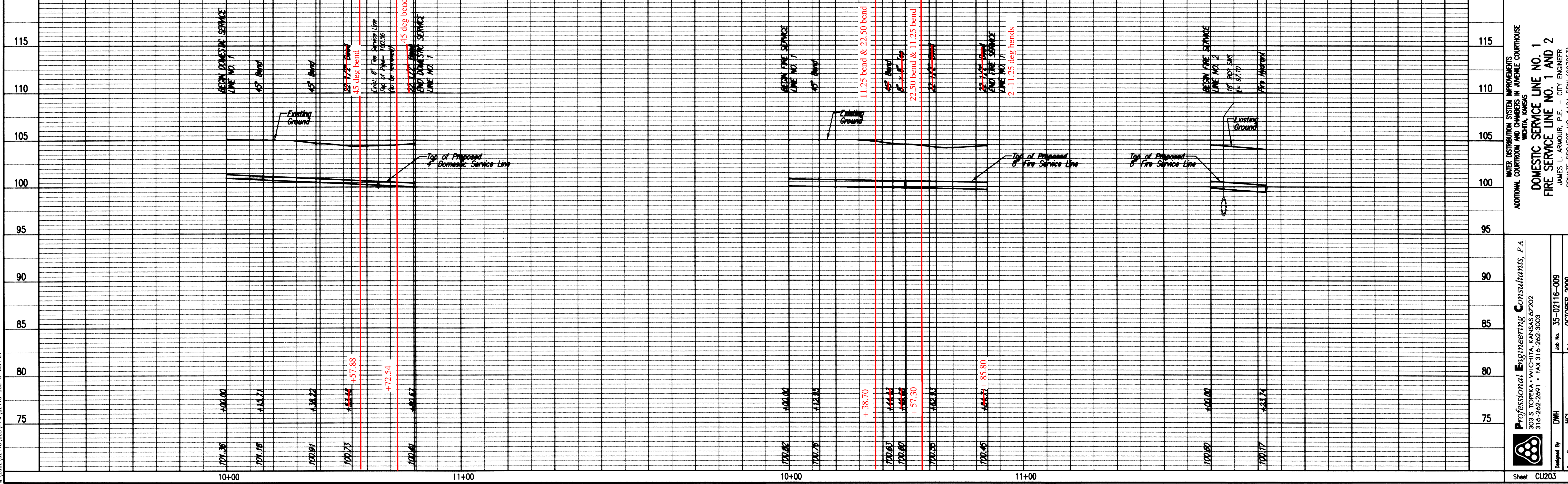


\* PRIOR TO BEGINNING CONSTRUCTION, THE CONTRACTOR SHALL EXCAVATE THE EXISTING 4\"/>

\*\* PRIOR TO BEGINNING CONSTRUCTION, THE CONTRACTOR SHALL EXCAVATE THE EXISTING 8\"/>

✕ = Denotes pipe to be removed

Unless noted otherwise, elevations shown are top of pipe



WATER DISTRIBUTION SYSTEM IMPROVEMENTS  
 ADDITIONAL COURTROOM AND CHAMBERS IN JUVENILE COURTHOUSE  
 WICHITA, KANSAS  
**DOMESTIC SERVICE LINE NO. 1**  
**FIRE SERVICE LINE NO. 1 AND 2**  
 JAMES L. ARMOUR, P.E. - CITY ENGINEER  
 PRIVATE PROJECT NO. 1484-PPW (607853)

Professional Engineering Consultants, P.A.  
 303 S. TOPSKA • WICHITA, KANSAS 67202  
 316-262-2691 • FAX 316-262-3003  
 DWI Job No. 35-02116-009 Date OCTOBER 2009  
 NCL  
 Sheet CU203

CITY OF WICHITA PROJECT NO. 1484-PPW (607853)