

SCHAEFER JOHNSON COX FREY ARCHITECTURE
 800 E. Central, Suite 200
 Wichita, Kansas 67208-4242
 Phone: 316.685.4114
 Fax: 316.685.4444
 www.sjcf.com
 sjcf@sjcf.com

DUDLEY WILLIAMS & ASSOCIATES, P.A.
 STRUCTURAL ENGINEERS
 MIDWEST ENGINEERING, INC.
 MECHANICAL ENGINEERS
 TAYLOR RYMAR CORPORATION
 ELECTRICAL ENGINEERS

NATIONAL CENTER FOR AVIATION TRAINING
 JABARA CAMPUS
 WEBB ROAD
 WICHITA, KANSAS

These drawings and their contents, including but not limited to, all concepts, designs, details are the exclusive property of Schaefer Johnson Cox Frey (SJCF), and may not be used or reproduced in any way without the written consent of any of SJCF.

Revisions

25 FEB 10	▲
▲	▲
▲	▲
▲	▲

Project Number
 SJCF 2955.00

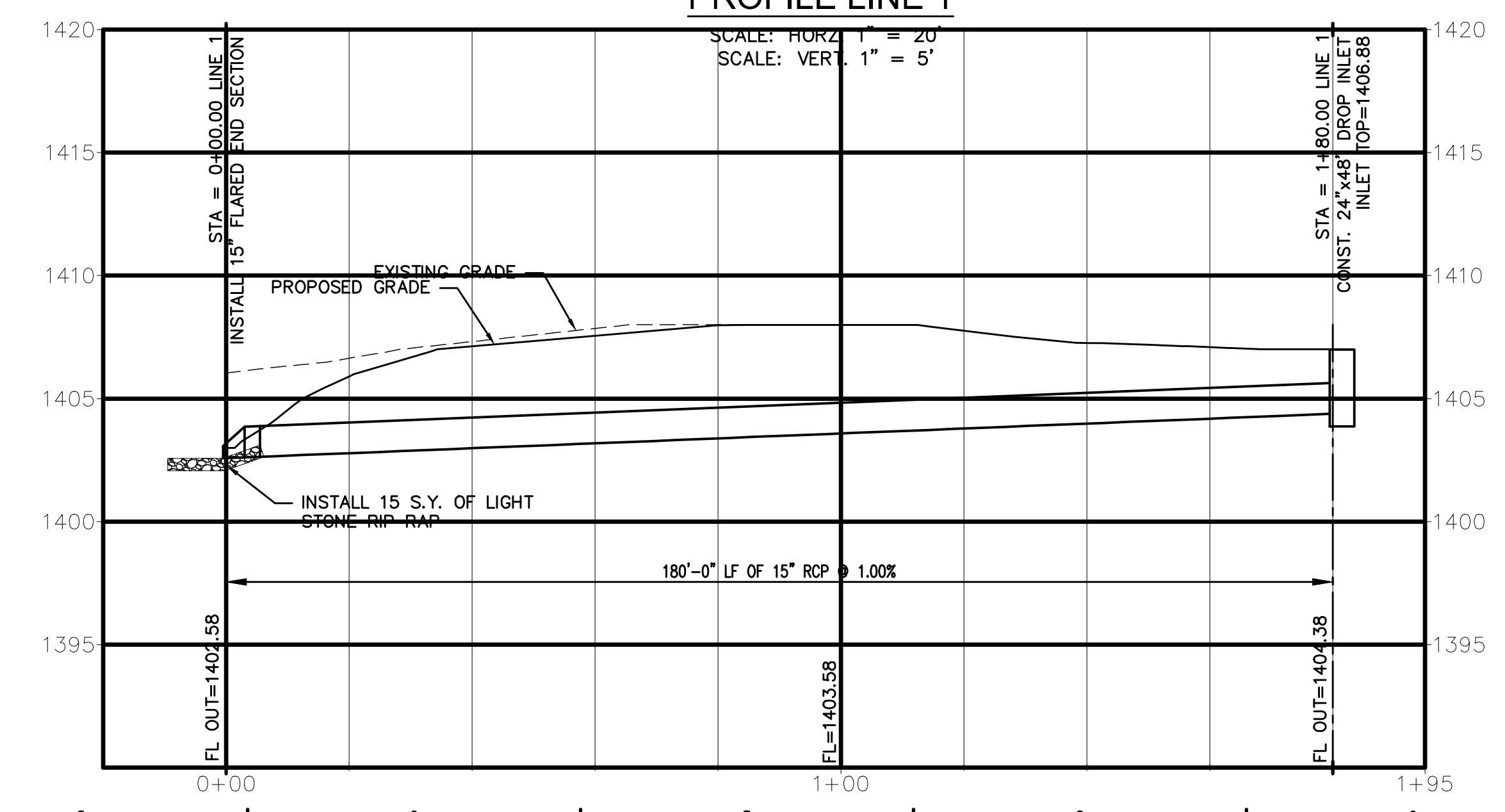
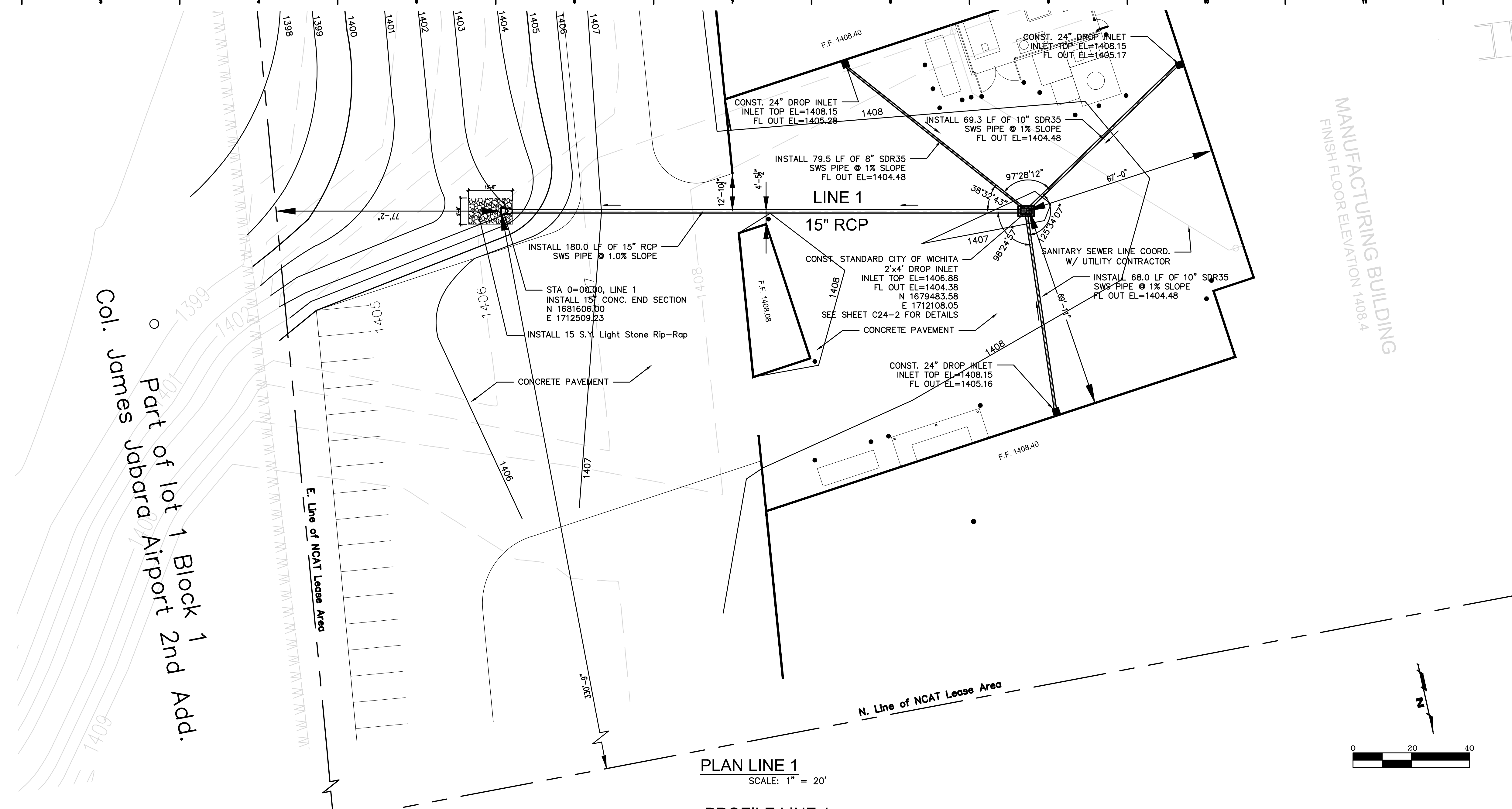
Date
 06 OCTOBER 2008

STORM
 WATER
 SEWER

1" = 10'

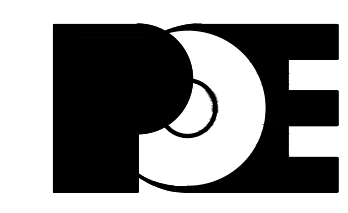
C24.2

MANUFACTURING BUILDING
 FINISH FLOOR ELEVATION 1408.4



NCAT Lease Area Legal Description

A tract of land being part of the Southwest Quarter of Section 28, Township 26 South, Range 2 East of the Sixth Principal Meridian in Sedgwick County, Kansas, said tract being more particularly described as follows: Commencing at the Southwest Corner of the Southwest Quarter of Section 28, Township 26 South, Range 2 East of the Sixth Principal Meridian in Sedgwick County, Kansas, thence on a Kansas State Plane Coordinate System NAD 83 Grid Bearing of N 00°50'04.6" W along the West line of said Southwest Quarter of Section 28 for 1265.00 feet, thence N 89°09'55.4" E for 50.00 feet to the point of beginning on the East right-of-way line of Webb Road, thence N 00°50'04.6" W along the East right-of-way line of Webb Road, for 1225.88 feet, thence N 89°59'47.4" E for 953.48 feet, thence S 05°19'12.1" W for 1231.11 feet, thence N 90°00'00" W for 821.47 feet to the point of beginning.



POE & ASSOCIATES, INC.
 CONSULTING ENGINEERS
 5940 E. Central, Suite 200 ■ Wichita, KS 67208-4242
 Phone 316/685-4114 ■ FAX 316/685-4444