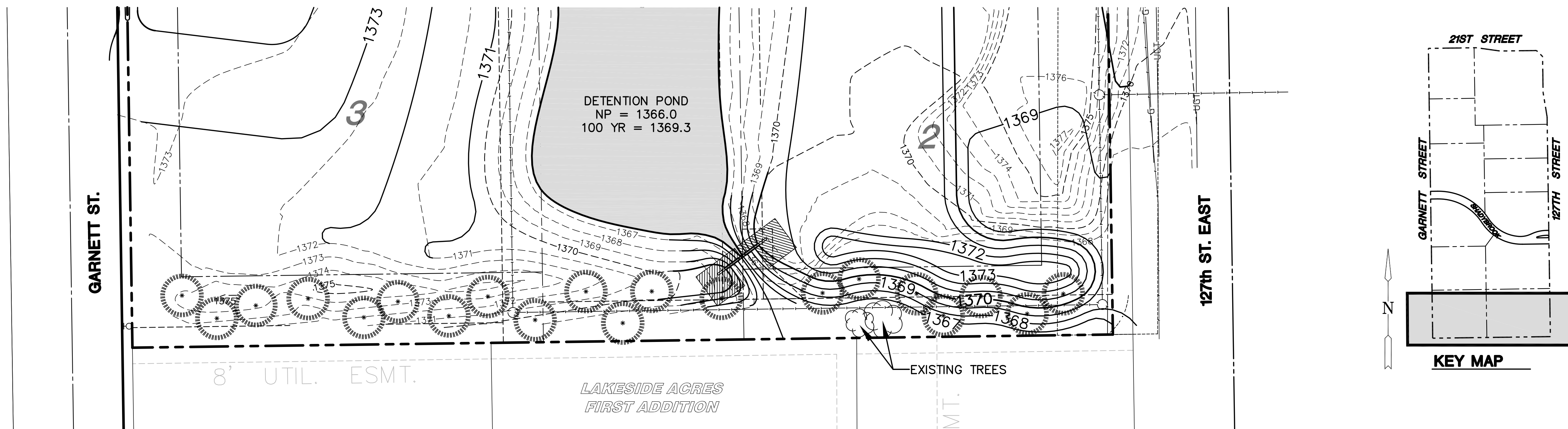


GRADING AND DRAINAGE PLANS
SUMMIT CROSSING
WICHITA, KANSAS



PLANT SCHEDULE

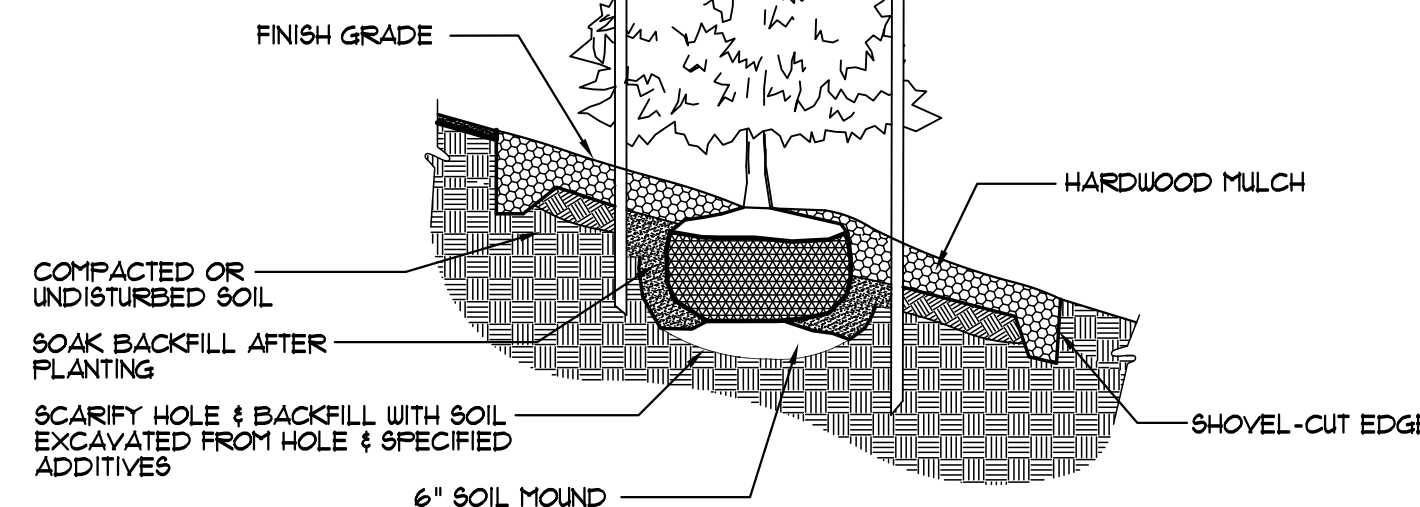
KEY	QTY	COMMON NAME	BOTANICAL NAME	SIZE & METHOD OF HANDLING
	20	EASTERN REDCEDAR	JUNIPERUS VIRGINIANA	6'-8' HT. / B&B

GENERAL LANDSCAPE NOTES:

- LANDSCAPE CONTRACTOR SHALL MAKE SURE THAT THE MASS GRADING CONTRACTOR HAS THOROUGHLY RIPPED AND ALLEVIATED ALL COMPACTED SOILS FROM HAULING AND PLACEMENT OPERATIONS.
- PLANTING DATES FOR PLANT MATERIAL SHALL BE DURING THE MONTHS BETWEEN FEB. 15TH AND MAY 31ST OR SEPT. 15TH AND DEC. 15. PLANTING SHALL ONLY BE CONDUCTED WHEN THE GROUND IS NOT FROZEN, SNOW-COVERED, OR IN AN OTHERWISE UNSUITABLE CONDITION FOR PLANTING. DEVIATION FROM THE ABOVE PLANTING DATES WILL ONLY BE PERMITTED WITH APPROVAL FROM THE OWNER'S REPRESENTATIVE.
- ALL PLANTS SHALL CONFORM TO ANSI Z601 FOR SIZE AND QUALITY STANDARDS.
- ALL LANDSCAPE PLANTS SHALL BE GUARANTEED FOR ONE YEAR FOLLOWING INITIAL ACCEPTANCE. DEAD OR DEFICIENT PLANTINGS SHALL BE ACCEPTABLY REPLACED, IN PROPER PLANTING SEASON, ONE TIME AT NO COST TO THE OWNER.

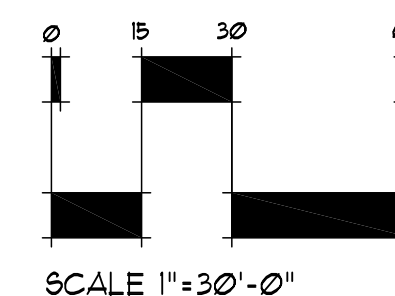
NOTES:

- BALL OF PLANT TO BE KEPT MOIST AND PROTECTED FROM DAMAGE PRIOR TO PLANTING.
- ADD ROOT STIMULATOR TO SURFACE IMMEDIATELY AFTER PLANTING AS PER THE MANUFACTURER'S RECOMMENDATIONS.
- PLANTING DEPTH OF ROOTBALL SHALL BE EQUAL TO ITS ORIGINAL PLANTING DEPTH AT NURSERY.
- DO NOT OVERTIGHTEN GUYS. (SHADED PLANT MATERIAL NEED NOT BE STAKED).



TREE PLANTING AT SLOPE
NOT TO SCALE

LANDSCAPE BUFFER PLAN
SCALE: 1" = 30'-0"



LANDSCAPE BUFFER PLAN

SHEET TITLE

08542

PROJECT NUMBER

DESIGN BY

MKEC

DRAWN BY

RKO

CHECKED BY

GJA

ISSUED

March 2010

REVISED

SHEET NO.

5 of 15