

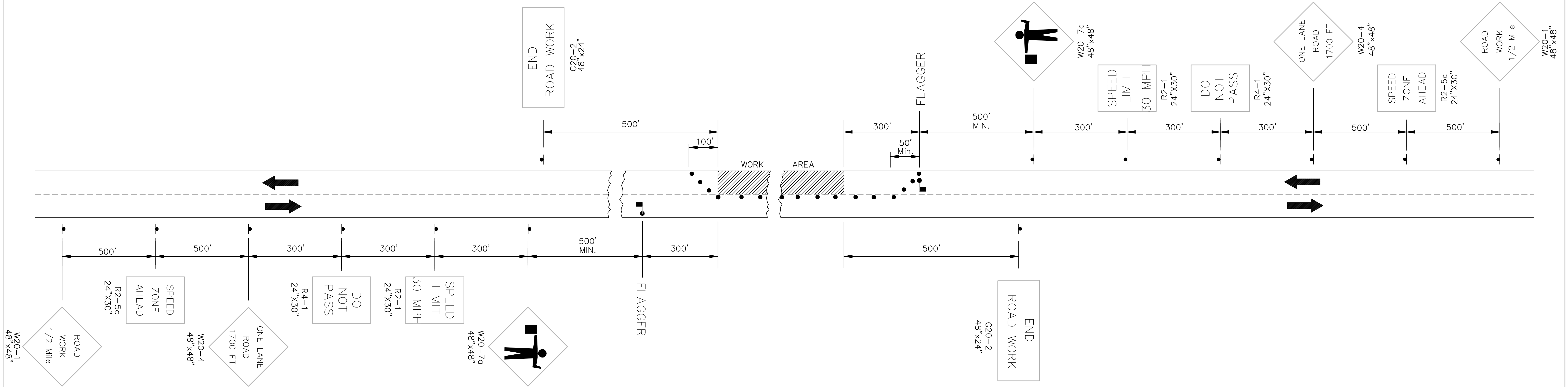
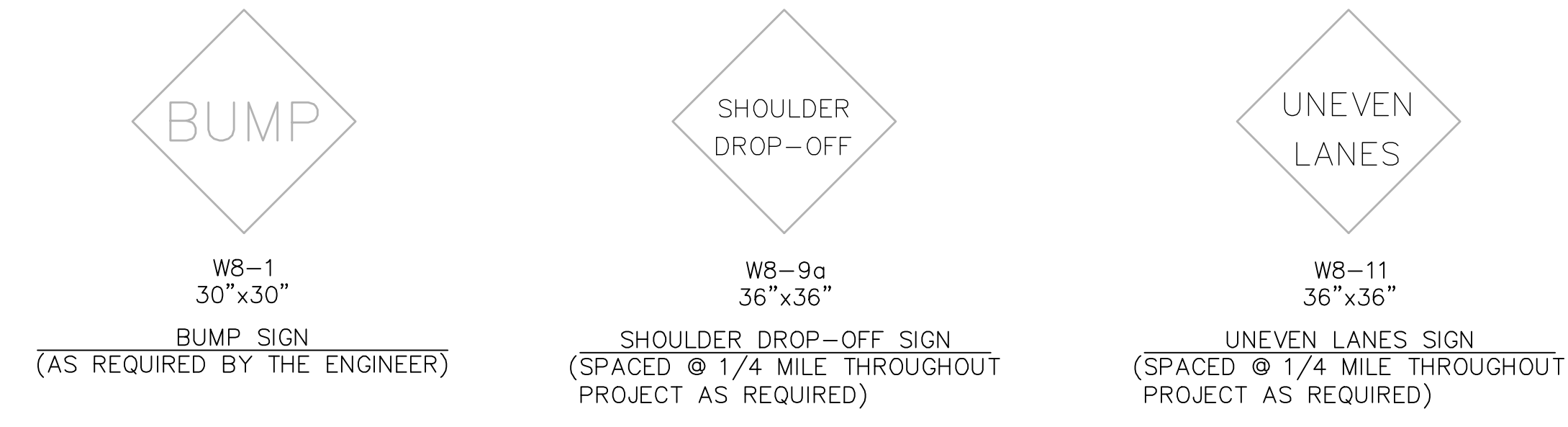
COUNTY	STATE	PROJECT NUMBER	FISCAL YEAR	SHEET NO.	TOTAL SHEETS
SEDGWICK	KANSAS	ANGEL FIRE PH. 2	2010	3A	19

LIST OF TRAFFIC CONTROL DEVICES *

MUTCD DEVICE NO.	NO.	FLASHERS		REMARKS	DELINEATORS & CHANNELIZATION DEVICES					
		TYPE A	TYPE B		DEVICE	NO.	SIZE	FLASHERS		
								TYPE A	TYPE B	TYPE C
W20-1	2				BARRICADES					
R2-5c	2				TYPE III					
W20-4	2				TYPE II					
R4-1	2				TYPE I					
R2-1	2				DRUMS					
W20-7a	2				SLIM LINE CHANNELIZERS					
G20-2	2				CONES					
W8-9a					TUBES					
W8-11					VERTICAL PANELS					
W8-1					SINGLE					
					BACK TO BACK					
					PAVEMENT MARKING	WHITE	YELLOW			
					4" BROKEN (Lin. Ft.)					
					4" SOLID (Lin. Ft.)					
					TEMPORARY STRIPING (Line Mile)					

* FOR INFORMATION ONLY

SEE SHEET NO. __ & __ FOR TRAFFIC CONTROL NOTES



TRAFFIC CONTROL PLAN FOR HANDLING ONE-LANE TRAFFIC THROUGH WORK AREA (FLAGGER)

NOTE:
 Flagger ahead (W20-7a, symbolic) sign shall be used ONLY when a flagger is present. At all other times this sign shall be covered or removed.
 Flaggers shall comply with the "Handbook For Flaggers" State of Kansas (latest edition).
 On roadways utilizing a flagger, additional flaggers and W20-7a signs may be required when traffic volumes, especially during peak hours, are such that approaching traffic will not have adequate advance warning or when traffic is backed up more than fifteen hundred (1500') feet from the flagger station.

- Channelization devices.

Rev.Date	Description	By	Chk
TRAFFIC CONTROL PLAN FOR ONE LANE CLOSED ON A TWO-LANE ROADWAY (FLAGGER) TC 5-0			
PREPARED BY SEDGWICK COUNTY PUBLIC WORKS HIGHWAY DEPARTMENT			
DAVID C. SPEARS, P.E.		DIRECTOR/COUNTY ENGINEER	
DESIGNED	SCALE	DRAWN	CHECKED
NONE	M.R.B.	D.R.S.	M.R.B.
DATE	6/1988	4/2005	4/2005
SHEET NO.			3A
DWG: Q:\Blocks\Std\TC5-0.dwg			