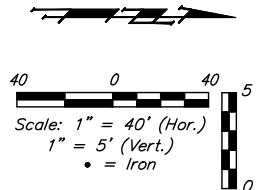
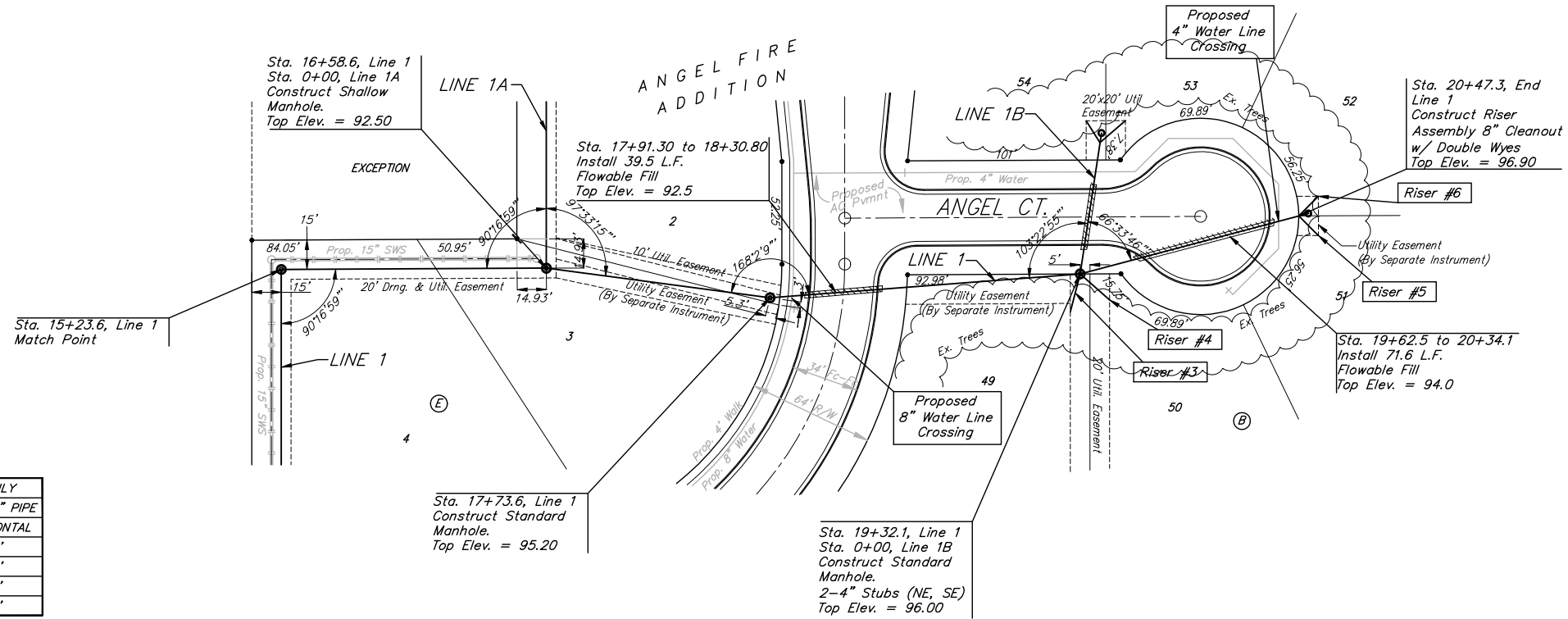


BENCHMARKS:
 C.O.W. Disc SE Corner West St. & 47th S.
 Elev. = 92.29 (City Datum)

RR Spike in N. face of power pole, SE Corner 47th So. & Kessler
 Elev. = 91.74 (City Datum)

"□" Cut in Top of Curb Adjacent to the NW Corner Lot 27, Block C.
 Elev. = 93.57 (City Datum)

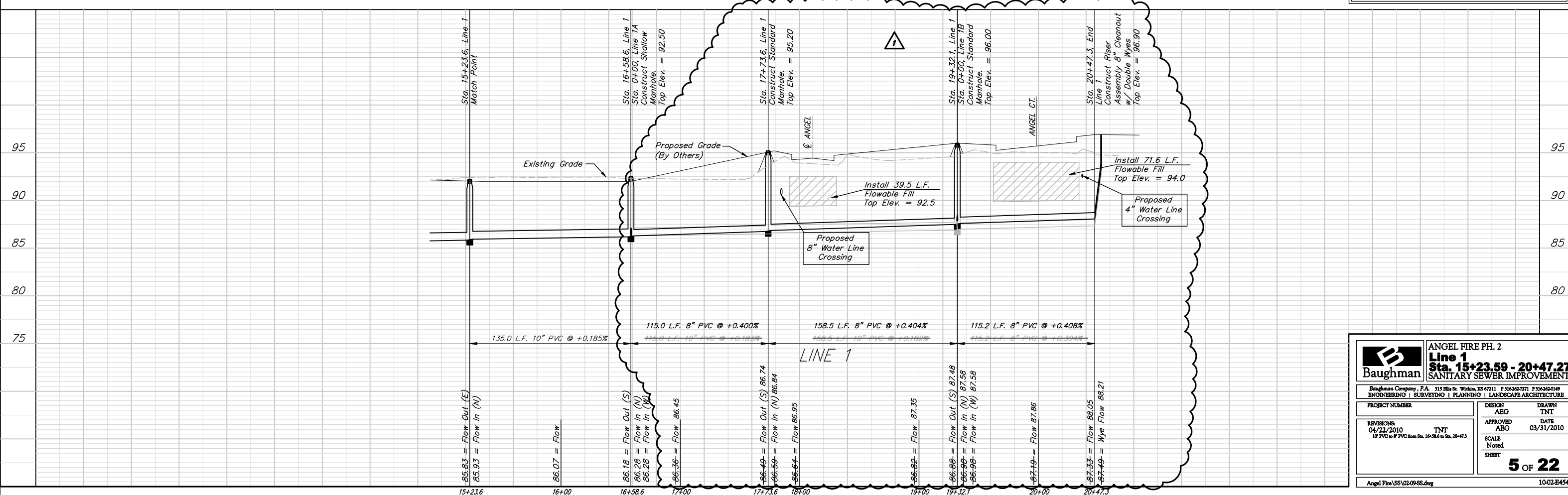


SEWER SERVICE TABLE

| NUMBER | TYPE | LOCATION | | | | FOR INFORMATION ONLY | |
|--------|-------------|----------|-------|----------|---------------------|----------------------------|----------|
| | | LOT NO. | BLOCK | LINE NO. | STATION \ DIRECTION | APPROXIMATE LENGTH 4" PIPE | VERTICAL |
| 3 | 4" Stub | 49 | B | 1 | 19+32.1 \ Rt. | 4.2' | 20' |
| 4 | 4" Stub | 50 | B | 1 | 19+32.1 \ Rt. | 4.2' | 20' |
| 5 | 4" Dbl. Wye | 51 | B | 1 | 20+47.3 \ Rt. | 4.8' | 14' |
| 6 | 4" Dbl. Wye | 52 | B | 1 | 20+47.3 \ Lt. | 4.8' | 14' |

NOTE: Vertical Riser Pipe shall be extended to 2' minimum above ground water elevation and 4' maximum below proposed ground elevation. Contractor shall use Method "B" for riser construction. Pipe shall be laid at 2% slope. See detail, sheet 13.

All trench and manhole excavation areas from Sta. 17+78.5 to Sta. 20+47.3, Line 1 shall be backfilled with sand. The sand backfill shall be within two feet of existing grade and shall be water-jetted and vibrated during backfilling. All costs shall be subsidiary to pipe cost.



ANGEL FIRE PH. 2
Line 1
Sta. 15+23.59 - 20+47.27
SANITARY SEWER IMPROVEMENTS

Baughman
 ENGINEERING | SURVEYING | PLANNING | LANDSCAPE ARCHITECTURE

315 Ellis St. Wilkins, KS 67211 P 316-262-7771 F 316-262-0149

| | | |
|---|----------|------------|
| PROJECT NUMBER | DESIGN | DRAWN |
| REVISIONS | APPROVED | DATE |
| 04/22/2010 | TNT | 03/31/2010 |
| 10" PVC to 8" PVC from Sta. 16+58.6 to Sta. 20+47.3 | SCALE | Noted |
| | SHEET | |

5 OF 22

Angel Fire SS 0209-SS.dwg 10-02-E454