

BENCHMARKS:
 C.O.W. Disc SE Corner West St. & 47th S.
 Elev. = 92.29 (City Datum)

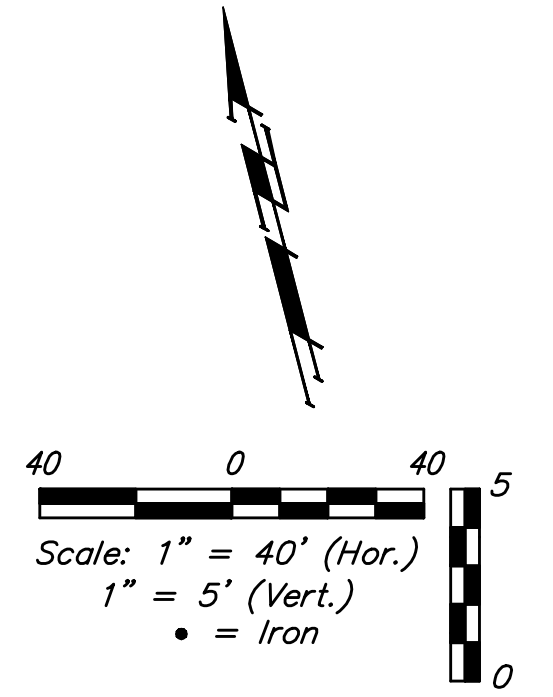
RR Spike in N. face of power pole, SE
 Corner 47th So. & Kessler
 Elev. = 91.74 (City Datum)

"□" Cut in Top of Curb Adjacent to the
 NW Corner Lot 27, Block C.
 Elev. = 93.57 (City Datum)

WL Sta 2+05.65 Line 1
 = WL Sta 0+00 Line 1A
 = BL Sta 1+76, 26' Rt.
 1 - 8"x4" CIMJ Tee
 1-4" Valve Assy. (N)
 (Gate Valve)
 Valve Box Elev. = 95.34
 1 - 8" CIMJ 11.25' Bend

BL Sta 1+99
 = Q ANGEL CT.

ANGEL FIRE
 ADDITION



BL Sta 0+00 =
 West § T285
 RTW S13

WL Sta 0+00, Begin Line 1
 = BL Sta -0+29.25, 34' Rt.
 Existing Wtr. Valve (E)
 Remove existing Cap assembly
 and Connect to Existing 8"
 water line.

Baseline =
 Q West St.

Curve #1
 Curve Data Based on Water Line
 Rad. = 149' Delta = 62°57'51" Tangent = 91.24'
 Arc = 163.74' L.C. = 155.63' Def./Ft. = 11.53612 Min.

Station	Arc	Face Chord Lengths 6' Right	Defl.	Total Defl.
2+51.93	-	-	0°00'00"	0°00'00"
2+75.00	23.07'	22.12'	4°26'08"	4°26'08"
3+00.00	25.00'	23.97'	4°48'24"	9°14'32"
3+25.00	25.00'	23.97'	4°48'25"	14°02'57"
3+50.00	25.00'	23.97'	4°48'24"	18°51'21"
3+75.00	25.00'	23.97'	4°48'24"	23°39'45"
4+00.00	25.00'	23.97'	4°48'24"	28°28'09"
4+15.67	15.67'	15.03'	3°00'46"	31°28'55"

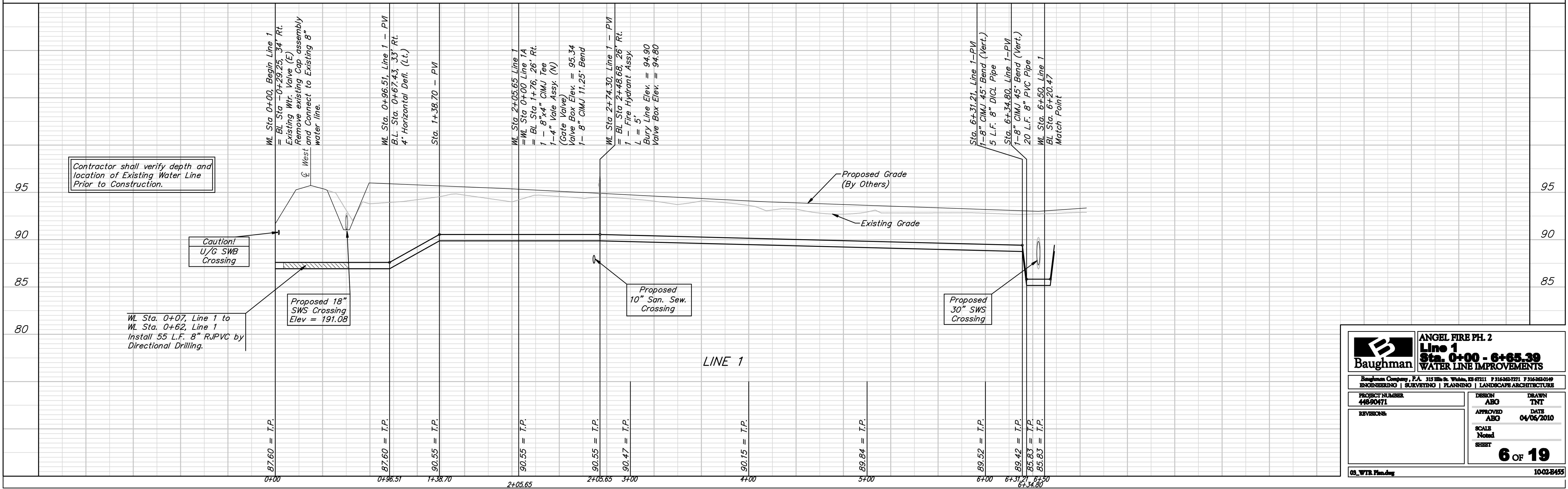
WL Sta. 0+07, Line 1 to
 WL Sta. 0+62, Line 1
 Install 55 L.F. 8" RUPVC by
 Directional Drilling. Cost of
 Drilling to be incidental to
 cost of pipe being installed.

Curve #2
 Curve Data Based on Water Line
 Rad. = 126' Delta = 62°57'51" Tangent = 77.16'
 Arc = 138.47' L.C. = 131.60' Def./Ft. = 13.64140 Min.

Station	Arc	Face Chord Lengths 6' Right	Defl.	Total Defl.
4+15.67	-	-	0°00'00"	0°00'00"
4+25.00	9.33'	9.77'	2°07'16"	2°07'16"
4+50.00	25.00'	26.15'	5°41'03"	7°48'19"
4+75.00	25.00'	26.15'	5°41'02"	13°29'21"
5+00.00	25.00'	26.15'	5°41'02"	19°10'23"
5+25.00	25.00'	26.15'	5°41'02"	24°51'25"
5+50.00	25.00'	26.15'	5°41'02"	30°32'27"
5+54.14	4.14'	4.34'	0°36'28"	31°28'55"

For Radii Under 200'
 Contractor to Use
 Short Pipe Lengths

Note: Protective Fill to be
 Placed and Compacted per
 City Specs Prior to Water
 Line Installation.



Baughman **ANGEL FIRE PH. 2**
Line 1
Sta. 0+00 - 6+65.39
WATER LINE IMPROVEMENTS

Baughman Company, P.A. 313 8th St. W. Suite 200 St. Petersburg, FL 33701 P 313-442-7711 F 313-442-0149
 ENGINEERING | SURVEYING | PLANNING | LANDSCAPE ARCHITECTURE

PROJECT NUMBER 4469071	DESIGN ABO	DRAWN TNT
REVISIONS	APPROVED ABO	DATE 04/04/2010
SCALE Noted		6 OF 19
SHEET		

03_WTR_Plan.dwg 10022455