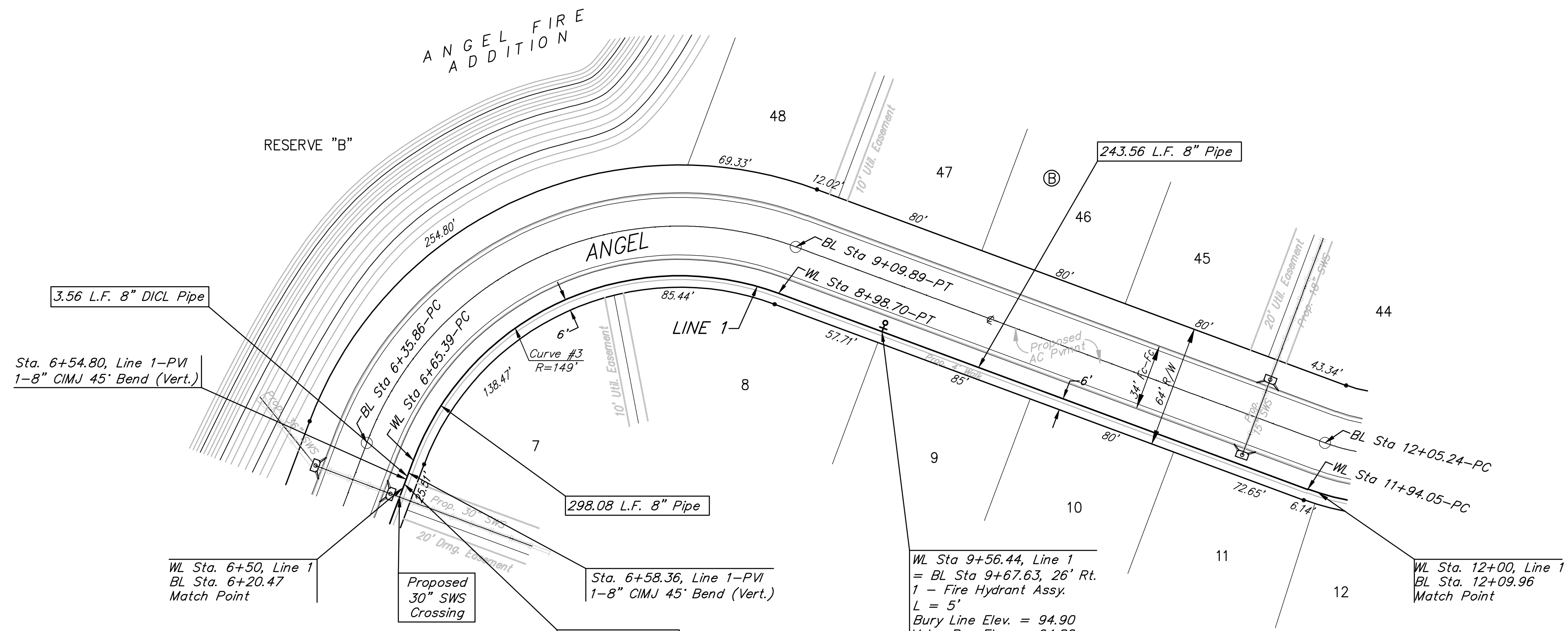
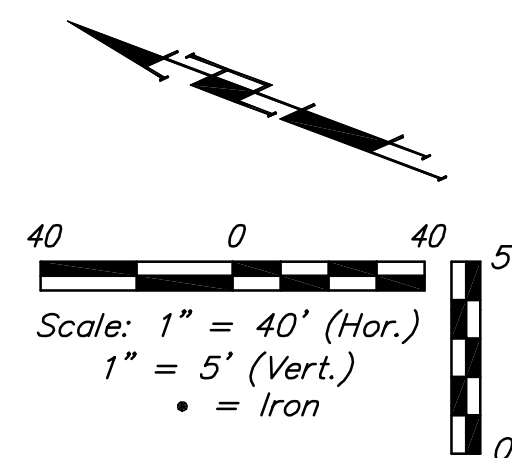


**BENCHMARKS:**  
 C.O.W. Disc SE Corner West St. & 47th S.  
 Elev. = 92.29 (City Datum)

RR Spike in N. face of power pole, SE  
 Corner 47th So. & Kessler  
 Elev. = 91.74 (City Datum)

"□" Cut in Top of Curb Adjacent to the  
 NW Corner Lot 27, Block C.  
 Elev. = 93.57 (City Datum)



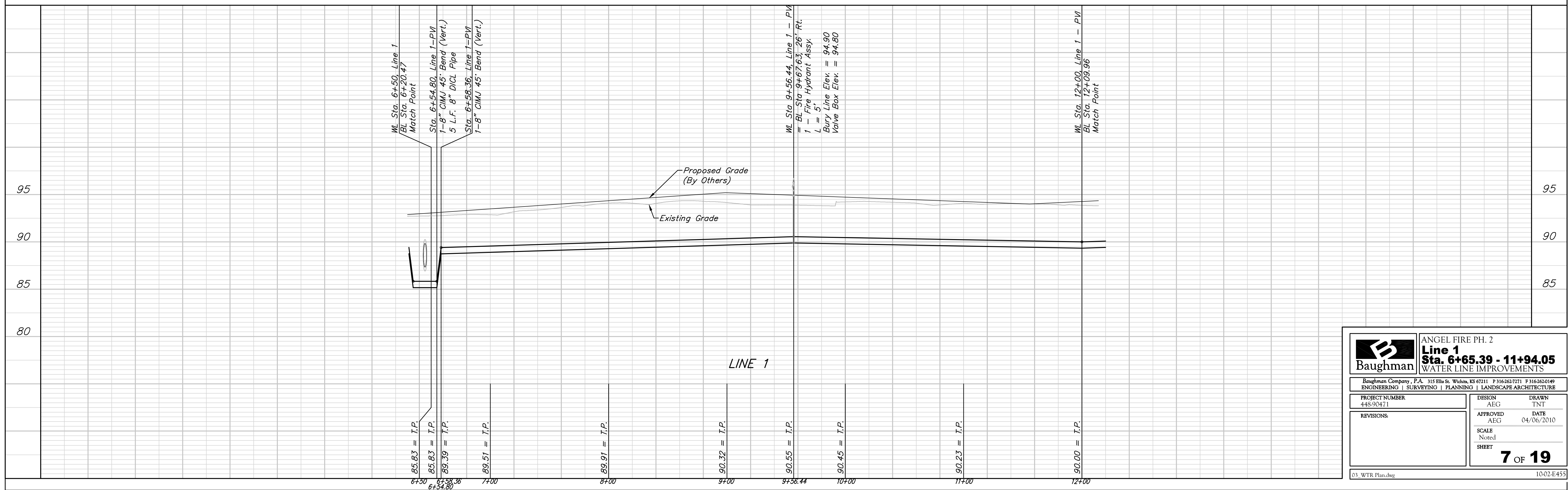
Curve #3  
 Curve Data Based on Water Line

Rad. = 149' Delta = 89°43'01" Tangent = 148.27'  
 Arc = 233.31' L.C. = 210.20' Def./Ft. = 11.53619 Min.

Station	Arc	Face Chord Lengths	Defl.	Total Defl.
6+65.39	-	-	0°00'00"	0°00'00"
6+75.00	9.61'	9.22'	1°50'52"	1°50'52"
7+00.00	25.00'	23.97'	4°48'24"	6°39'16"
7+25.00	25.00'	23.97'	4°48'24"	11°27'40"
7+50.00	25.00'	23.97'	4°48'25"	16'16'05"
7+75.00	25.00'	23.97'	4°48'24"	21°04'29"
8+00.00	25.00'	23.97'	4°48'24"	25°52'53"
8+25.00	25.00'	23.97'	4°48'24"	30°41'17"
8+50.00	25.00'	23.97'	4°48'25"	35°29'42"
8+75.00	25.00'	23.97'	4°48'24"	40'18'06"
8+98.70	23.70'	22.72'	4°33'25"	44°51'31"

For Radii Under 200'  
 Contractor to Use  
 Short Pipe Lengths

Note: Protective Fill to be  
 Placed and Compacted per  
 City Specs Prior to Water  
 Line Installation.



**Baughman**

ANGEL FIRE PH. 2  
**Line 1**  
**Sta. 6+65.39 - 11+94.05**  
 WATER LINE IMPROVEMENTS

Baughman Company, P.A. 315 Ellis St. Wichita, KS 67211 P 316-262-7771 F 316-262-0149  
 ENGINEERING | SURVEYING | PLANNING | LANDSCAPE ARCHITECTURE

PROJECT NUMBER 448-90471	DESIGN AEG	DRAWN TNT
REVISIONS:	APPROVED AEG	DATE 04/06/2010
	SCALE Noted	SHEET <b>7 OF 19</b>

03\_WTR Plan.dwg 1002-E455