

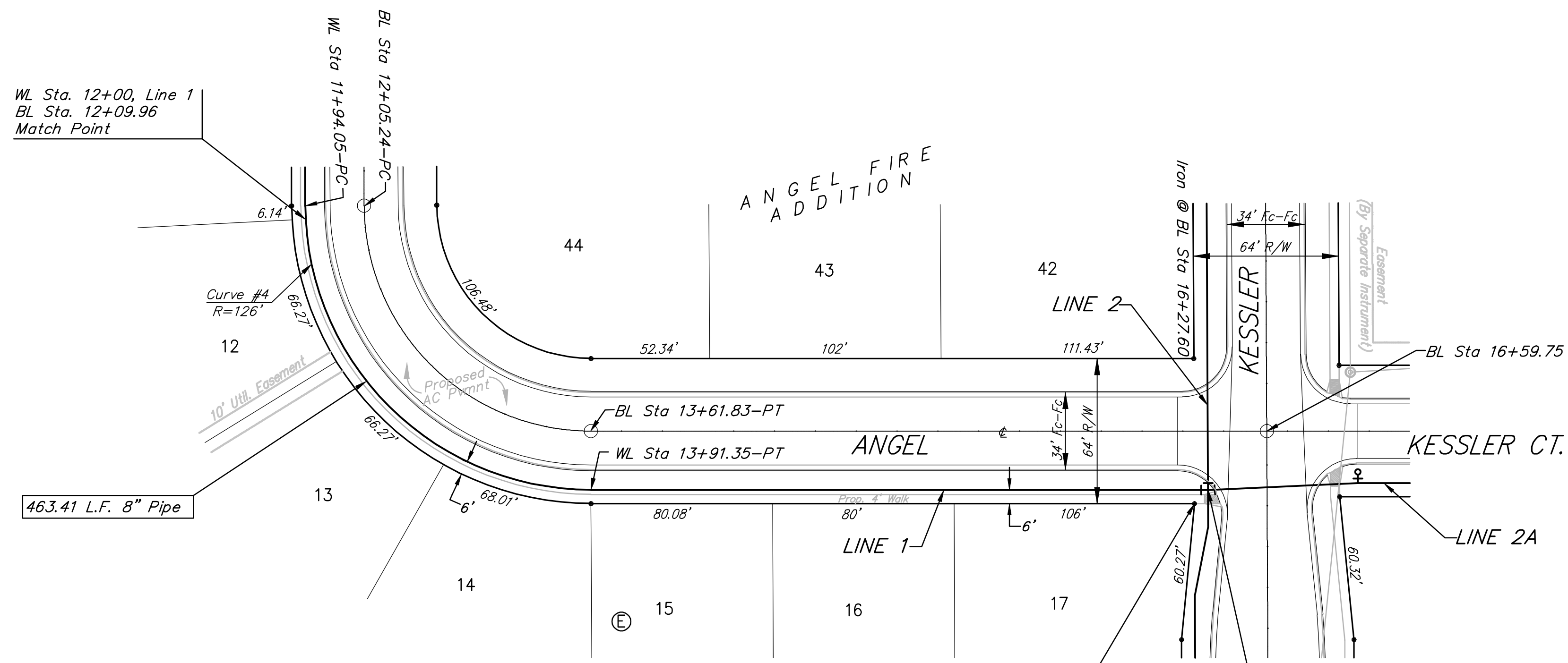
BENCHMARKS:
 C.O.W. Disc SE Corner West St. & 47th S.
 Elev. = 92.29 (City Datum)

RR Spike in N. face of power pole, SE
 Corner 47th So. & Kessler
 Elev. = 91.74 (City Datum)

"□" Cut in Top of Curb Adjacent to the
 NW Corner Lot 27, Block C.
 Elev. = 93.57 (City Datum)

Curve #4
 Curve Data Based on Water Line
 Rad. = 126' Delta = 89°43'01" Tangent = 125.38'
 Arc = 197.30' L.C. = 177.75' Def./Ft. = 13.64170 Min.

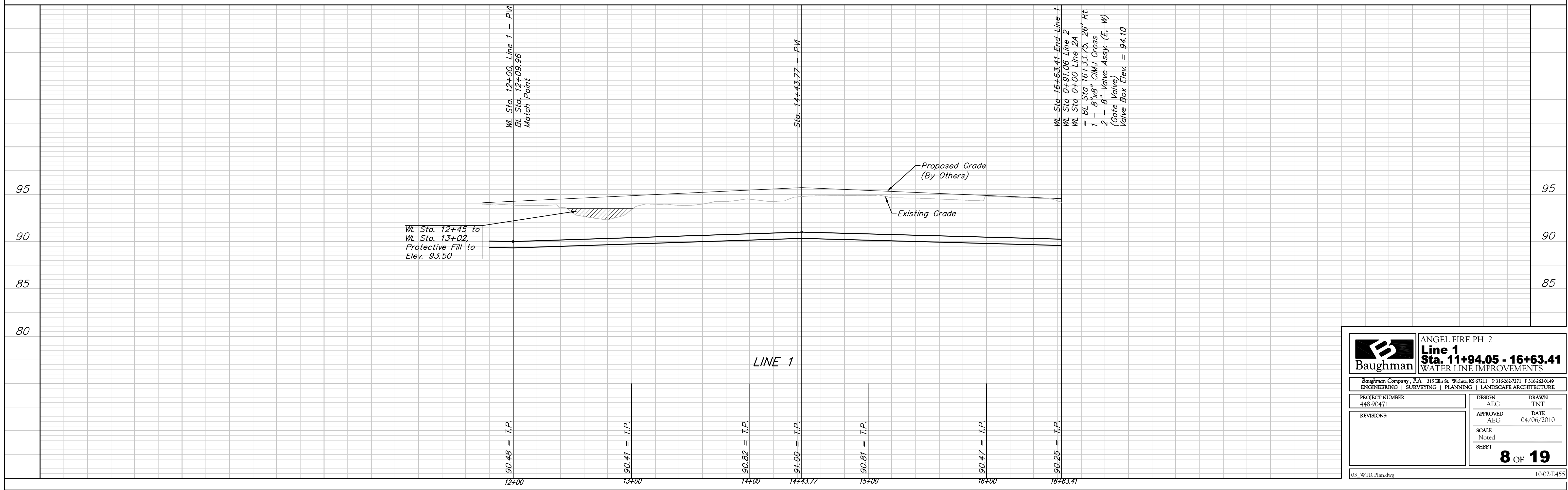
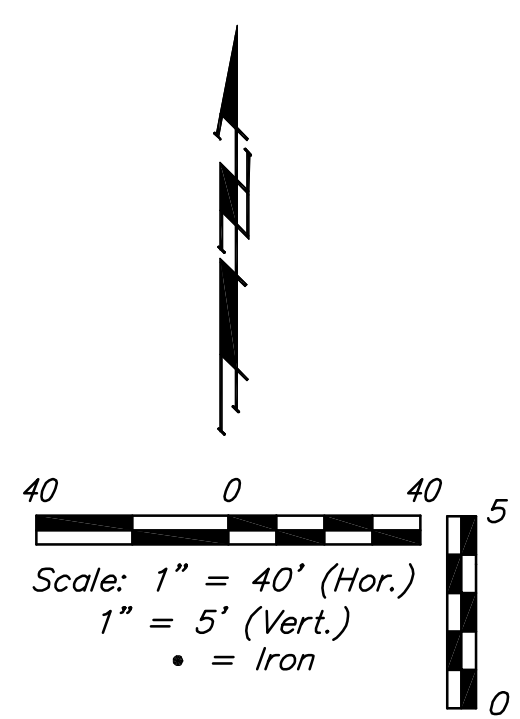
Station	Arc	Face Chord Lengths		Defl.	Total Defl.
		6' Right	6' Left		
11+94.05	-	-	-	0°00'00"	0°00'00"
12+00.00	5.95'	6.23'	6.23'	1°21'10"	1°21'10"
12+25.00	25.00'	26.15'	26.15'	5°41'03"	7°02'13"
12+50.00	25.00'	26.15'	26.15'	5°41'02"	12°43'15"
12+75.00	25.00'	26.15'	26.15'	5°41'03"	18°24'18"
13+00.00	25.00'	26.15'	26.15'	5°41'02"	24°05'20"
13+25.00	25.00'	26.15'	26.15'	5°41'03"	29°46'23"
13+50.00	25.00'	26.15'	26.15'	5°41'02"	35°27'25"
13+75.00	25.00'	26.15'	26.15'	5°41'03"	41°08'28"
13+91.35	16.35'	17.12'	17.12'	3°43'03"	44°51'31"



WL Sta 16+63.41 End Line 1
 WL Sta 0+78.60 Line 2
 WL Sta 0+00 Line 2A
 = BL Sta 16+33.75, 26' Rt.
 1 - 8"x8" CIMJ Cross
 2 - 8" Valve Assy. (E, W)
 (Gate Valve)
 Valve Box Elev. = 94.10

For Radii Under 200'
 Contractor to Use
 Short Pipe Lengths

Note: Protective Fill to be
 Placed and Compacted per
 City Specs Prior to Water
 Line Installation.



B Baughman	ANGEL FIRE PH. 2	
	Line 1 Sta. 11+94.05 - 16+63.41 WATER LINE IMPROVEMENTS	
Baughman Company, P.A. 315 Ella St. Wichita, KS 67211 P 316-262-7271 F 316-262-0149 ENGINEERING SURVEYING PLANNING LANDSCAPE ARCHITECTURE		
PROJECT NUMBER 448-30471	DESIGN AEG	DRAWN TNT
REVISIONS:	APPROVED AEG	DATE 04/06/2010
	SCALE Noted	SHEET
		8 OF 19
03_WTR Plan.dwg		10:02-E:455