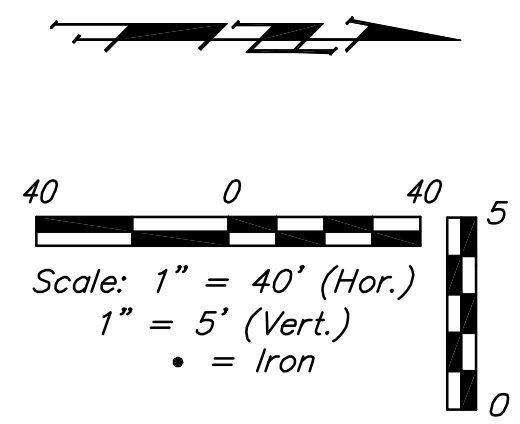
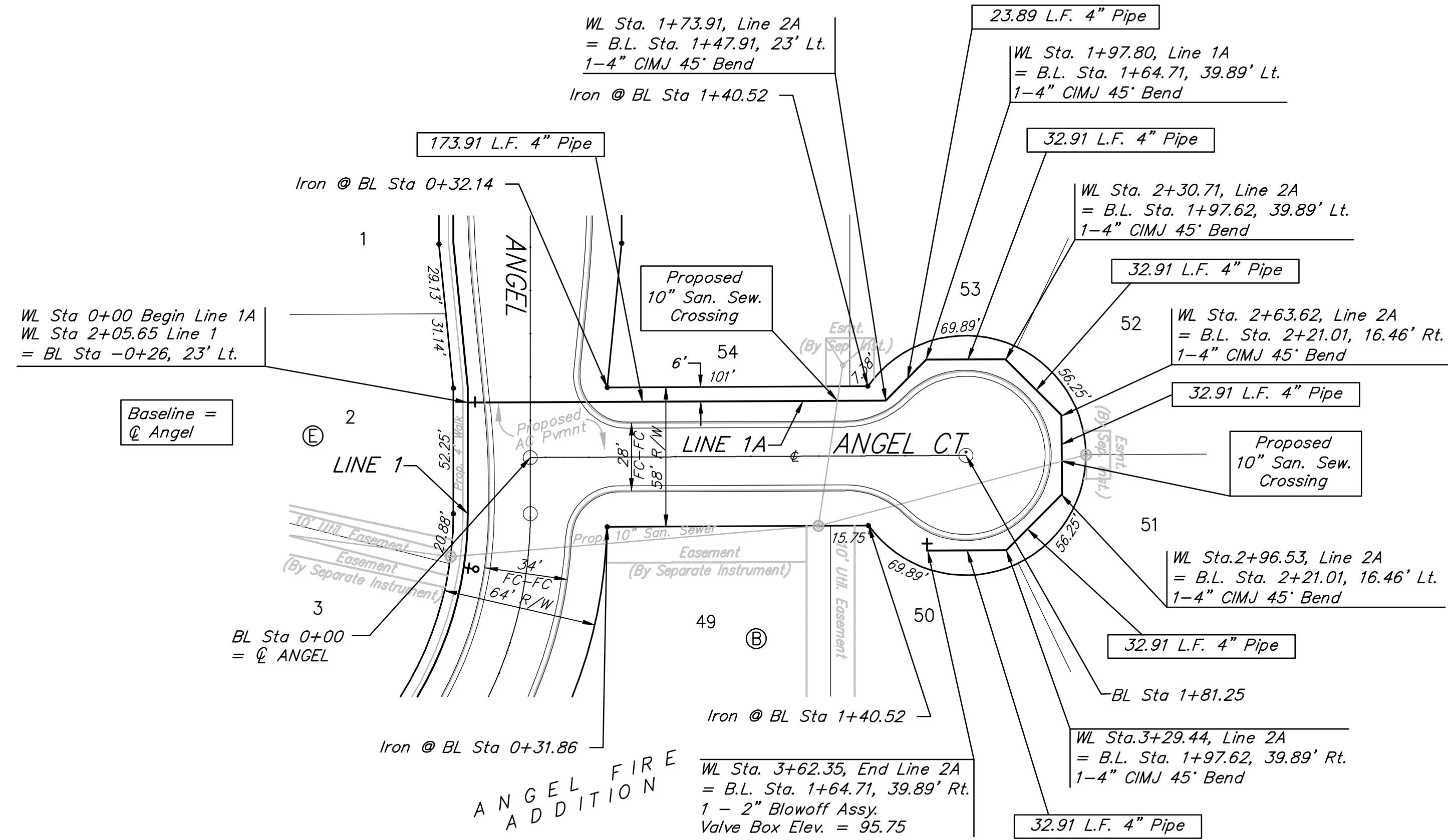


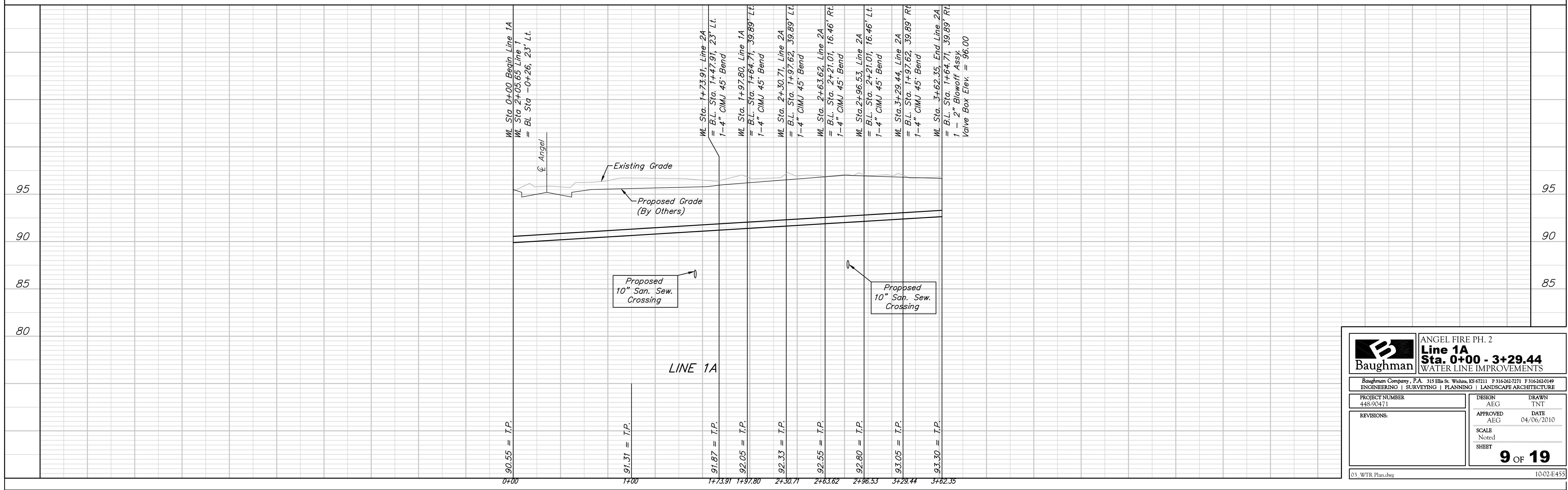
**BENCHMARKS:**  
 C.O.W. Disc SE Corner West St. & 47th S.  
 Elev. = 92.29 (City Datum)

RR Spike in N. face of power pole, SE  
 Corner 47th So. & Kessler  
 Elev. = 91.74 (City Datum)

"□" Cut in Top of Curb Adjacent to the  
 NW Corner Lot 27, Block C.  
 Elev. = 93.57 (City Datum)



Note: Protective Fill to be Placed and Compacted per City Specs Prior to Water Line Installation.



		ANGEL FIRE PH. 2	
		<b>Line 1A</b> <b>Sta. 0+00 - 3+29.44</b> WATER LINE IMPROVEMENTS	
<small>Baughman Company, P.A. 315 Ellis St. Wichita, KS 67211 P 316-262-7271 F 316-262-0149          ENGINEERING   SURVEYING   PLANNING   LANDSCAPE ARCHITECTURE</small>			
PROJECT NUMBER 448-30471	DESIGN AEG	DRAWN TNT	
REVISIONS:	APPROVED AEG	DATE 04/06/2010	
	SCALE Noted	SHEET	
			<b>9 OF 19</b>
03_WTR Plan.dwg			10-02-E-455