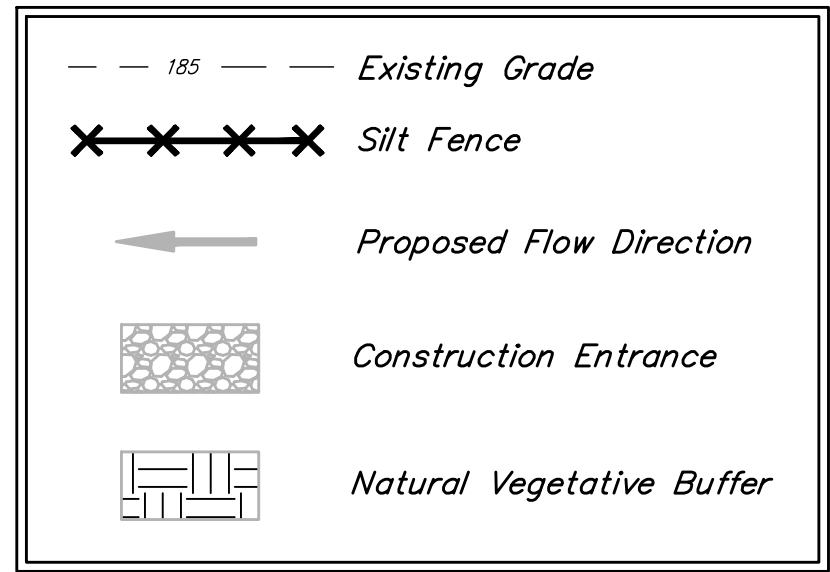
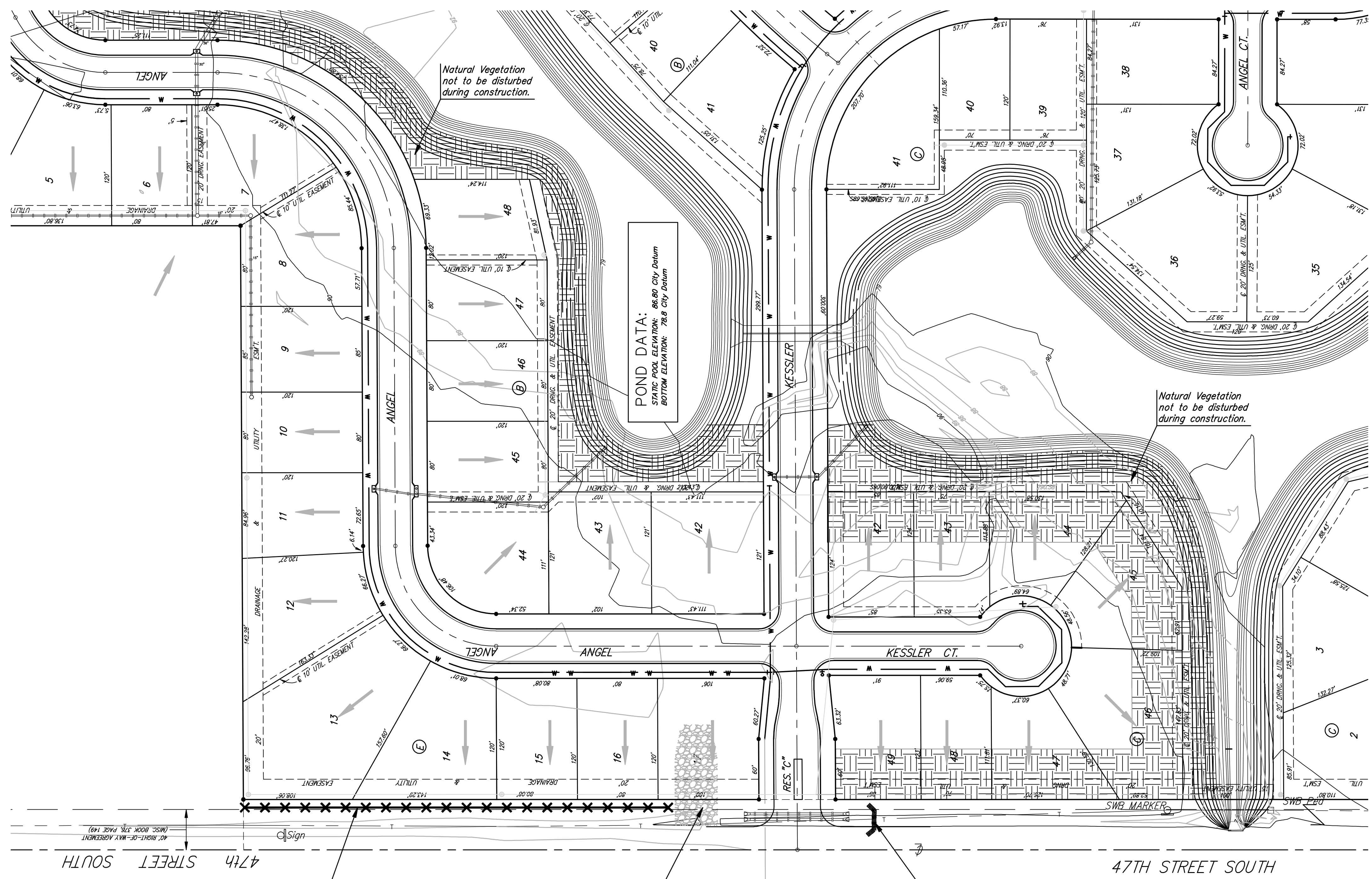
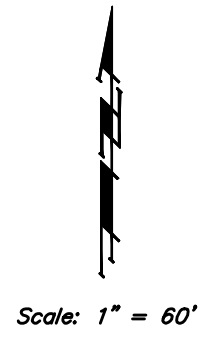


BENCHMARKS:
 C.O.W. Disc SE Corner West St. & 47th S.
 Elev. = 92.29 (City Datum)

RR Spike in N. face of power pole, SE Corner 47th So. & Kessler
 Elev. = 91.74 (City Datum)

"□" Cut in Top of Curb Adjacent to the NW Corner Lot 27, Block C.
 Elev. = 93.57 (City Datum)



EROSION CONTROL MEASURE	UNITS	QUANTITY
Maintain Silt Fence	L.F.	845
Maintain Construction Entrance	Ea.	2
Install Curlex Type II E.C. Mat	S.Y.	100
Install Hay Bale Barrier	Ea.	2

Quantities are For Information Only! Contractor shall verify quantities per final bid quantity sheet.

Baughman

ENGINEERING | SURVEYING | PLANNING | LANDSCAPE ARCHITECTURE

ANGEL FIRE ADDITION PH. 2

EROSION CONTROL PLAN

Water Line Improvements

Baughman Company, P.A. 315 9th St. W. Suite 202 Tampa, FL 33609-2271 P 316-292-7271 F 316-292-0149

PROJECT NUMBER
448-90471

DESIGN
AEG

DRAWN
TNT

REVISIONS

APPROVED
AEG

DATE
04/06/2010

SCALE
NOTED

13 OF 19

E:\Angel Fire\Erosion Control Plan.dwg