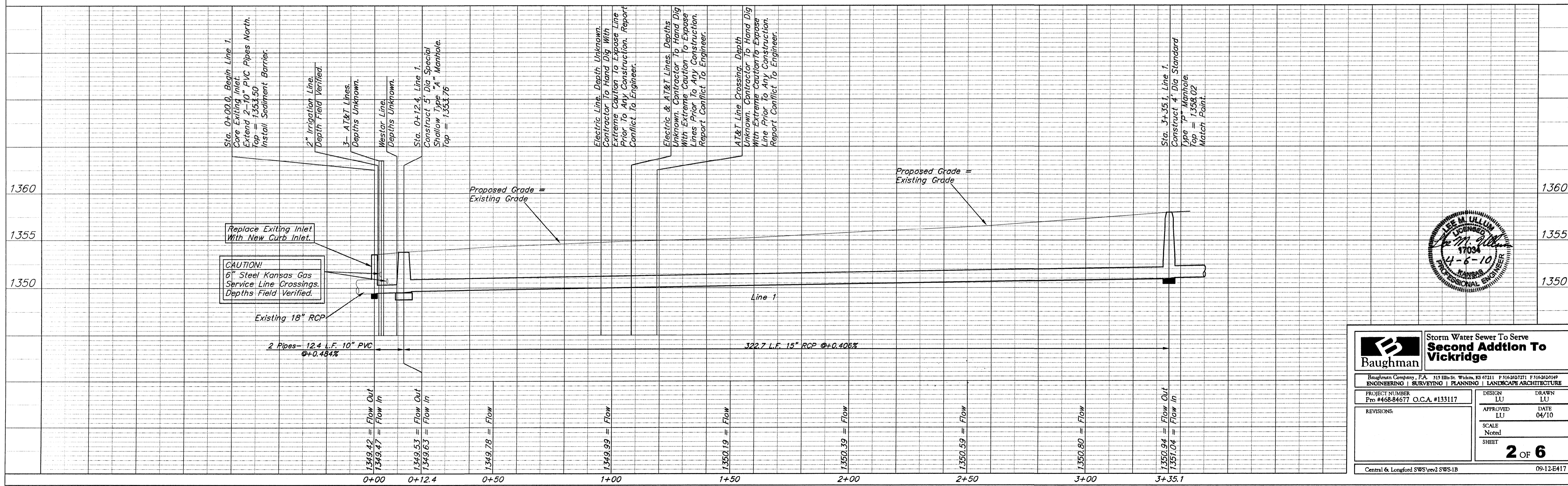


Bench Marks:

1. "□" Top of curb of west return of middle drive of Kapaun High School. Elevation = 1357.77 NAVD88
2. "□" Top of curb of north end of radius of east return at Central and Longford. Elevation = 1358.22 NAVD88



Baughman Storm Water Sewer To Serve Second Addition To Vickridge

Baughman Company, P.A. 315 Ellis St. Wichita, KS 67211 P 316-262-7171 F 316-262-0149
ENGINEERING | SURVEYING | PLANNING | LANDSCAPE ARCHITECTURE

PROJECT NUMBER: Pro #468-84677 O.C.A. #133117

DESIGN: LU DRAWN: LU
APPROVED: LU DATE: 04/10
SCALE: Noted
SHEET: 2 OF 6

REVISIONS:

Central & Longford SWS\rev2 SWS-1B 09-12-E417