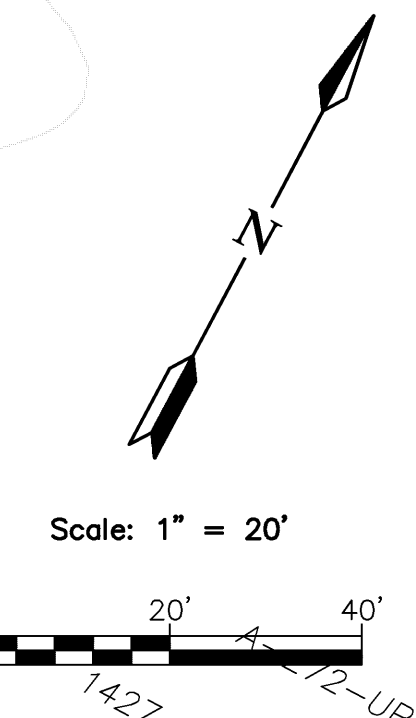
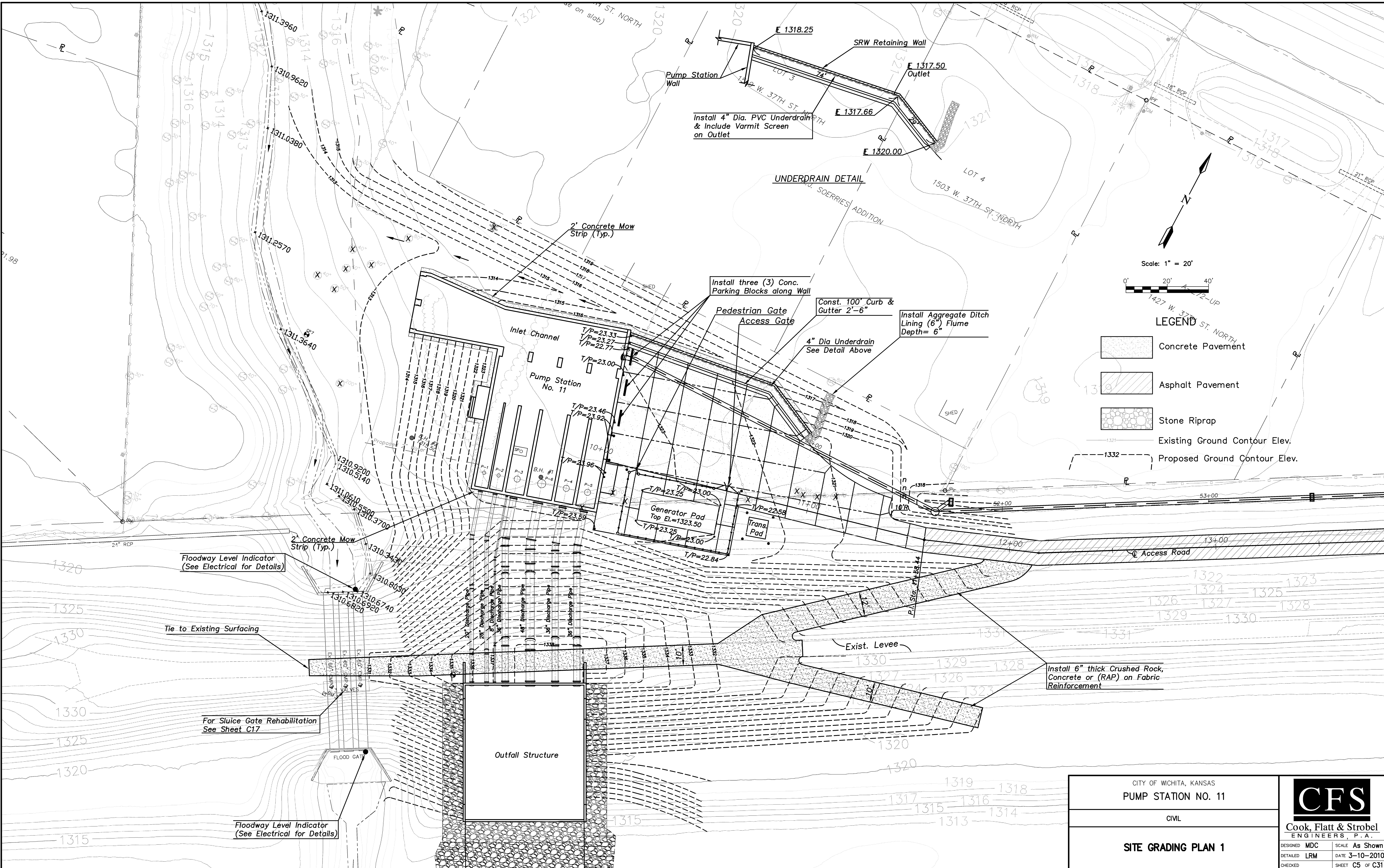


J:\2008Proj\08527\DWGS\004-SITE GRADING.dwg 3/11/2010 - 7:52am



- LEGEND**
- Concrete Pavement
 - Asphalt Pavement
 - Stone Riprap
 - Existing Ground Contour Elev.
 - Proposed Ground Contour Elev.

Install 6" thick Crushed Rock, Concrete or (RAP) on Fabric Reinforcement

Install 4" Dia. PVC Underdrain & Include Varmit Screen on Outlet

UNDERDRAIN DETAIL

Install three (3) Conc. Parking Blocks along Wall

Const. 100' Curb & Gutter 2'-6"

Install Aggregate Ditch Lining (6" Flume Depth= 6"

4" Dia Underdrain See Detail Above

Pedestrian Gate Access Gate

2' Concrete Mow Strip (Typ.)

Floodway Level Indicator (See Electrical for Details)

Tie to Existing Surfacing

For Sluice Gate Rehabilitation See Sheet C17

Floodway Level Indicator (See Electrical for Details)

CITY OF WICHITA, KANSAS		CFS Cook, Flatt & Strobel ENGINEERS, P. A.
PUMP STATION NO. 11		
CIVIL		DESIGNED MDC SCALE As Shown
SITE GRADING PLAN 1		DATE 3-10-2010
		CHECKED LRM SHEET C5 OF C31