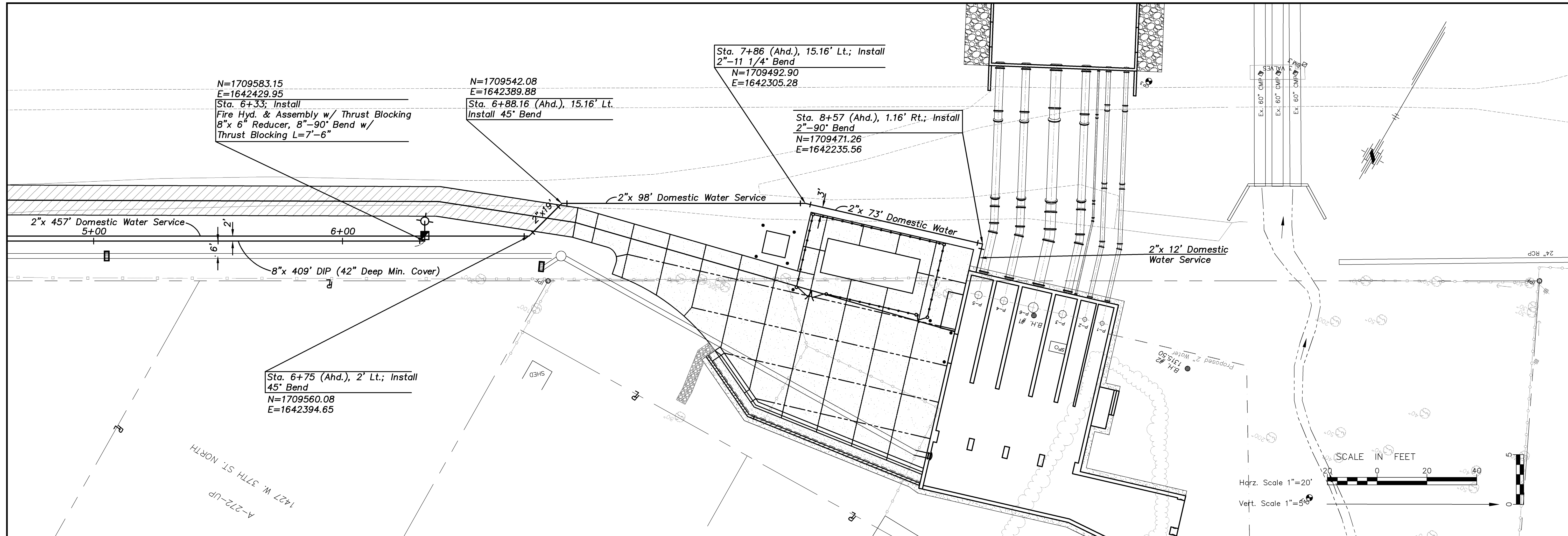
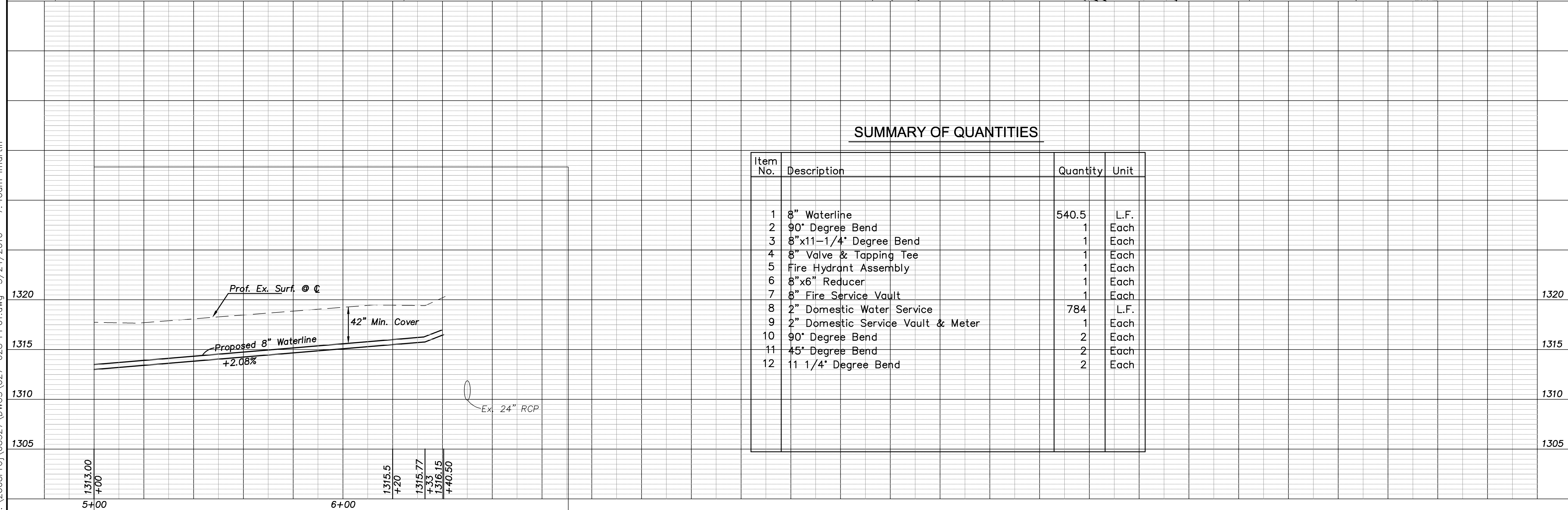


J:\2008Proj\08527\DWG\027-028_PP01.dwg 3/24/2010 - 7:40am lmartin



SUMMARY OF QUANTITIES

Item No.	Description	Quantity	Unit
1	8" Waterline	540.5	L.F.
2	90° Degree Bend	1	Each
3	8"x11-1/4" Degree Bend	1	Each
4	8" Valve & Tapping Tee	1	Each
5	Fire Hydrant Assembly	1	Each
6	8"x6" Reducer	1	Each
7	8" Fire Service Vault	1	Each
8	2" Domestic Water Service	784	L.F.
9	2" Domestic Service Vault & Meter	1	Each
10	90° Degree Bend	2	Each
11	45° Degree Bend	2	Each
12	11 1/4" Degree Bend	2	Each



Cook, Flatt & Strobel
ENGINEERS, P.A.

CFS

CFS PROJECT NO:
08-527

CITY OF WICHITA, KANSAS
PUMP STATION NO. 11
WATER DISTRIBUTION SYSTEM IMPROVEMENTS
STA. 5+00 TO STA. 6+70

DESIGNED BY: _____ DRAWN BY: _____ CHECKED BY: _____

SHEET TITLE:
**WATERLINE
PLAN/PROFILE**

PROJECT NUMBER:
468-84477

FINAL PLANS

SHEET NUMBER:
C28 of C31