

CP #3-1/2"x 24" Rebar w/ Red Control Cap
 N= 1709381.131 E= 1642210.629
 1. @ Gravel Levee Rd. 6.30' N.
 2. NE Cor. Flood Gate Control 40.55' W
 3. SE Cor. Flood Gate Control 41.13' ESE

CP #1- 1/2"x 24" w/ Red Control Cap
 N= 1709852.938 E= 1642389.750
 1. @ Porter Street 43.40' E
 2. SE Cor. Conc. Elec. Ped. 39.43' NNE
 3. @ 37th Street 18.70' S

Sta. 2+24.68 (Ahd.), 8' Lt. Install
 90° Bend & 11 1/4' Bend

Sta. 1+00, 8' Lt.; Install
 2" Service Outlet
 Assembly

Sta. 1+52, 8' Lt.; Install
 2" Domestic Service Vault,
 Meter w/ Appurtenances

Sta. 1+52; Install
 8" Fire Service Vault
 w/ Detector Check
 Assembly and
 Appurtenances

Sta. 1+00; Install
 12"x 12"x 8" Tapping
 Sleeve & 8" Valve
 and Thrust Block
 N=1709907.30
 E=1642748.01

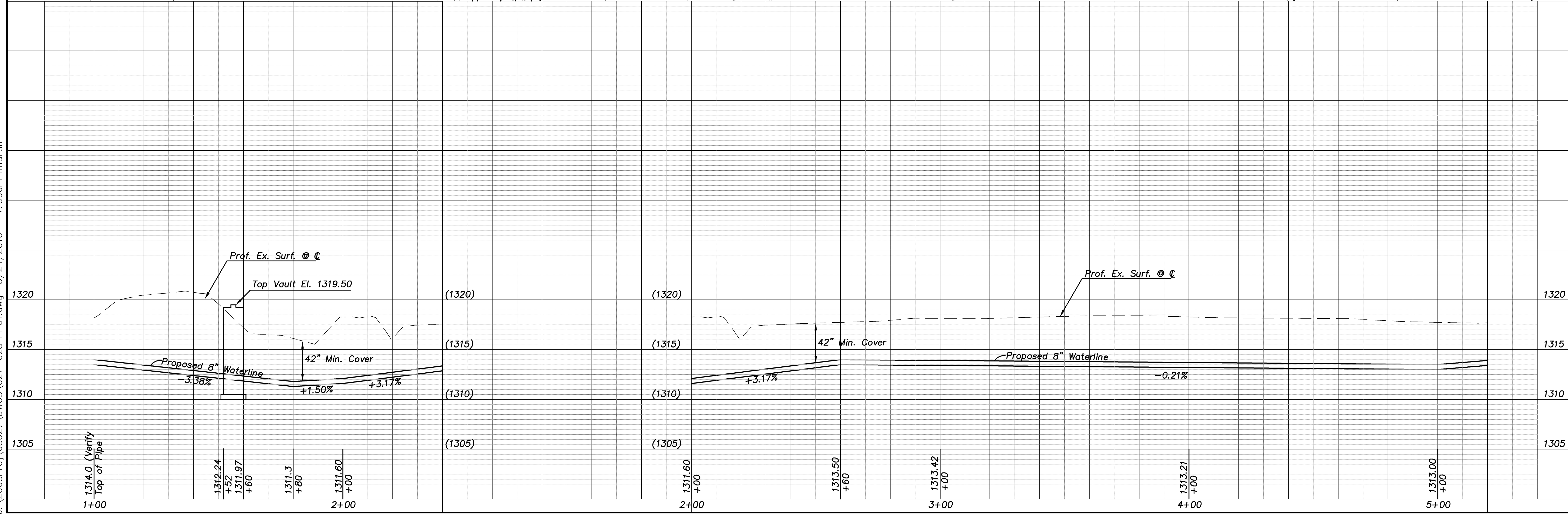
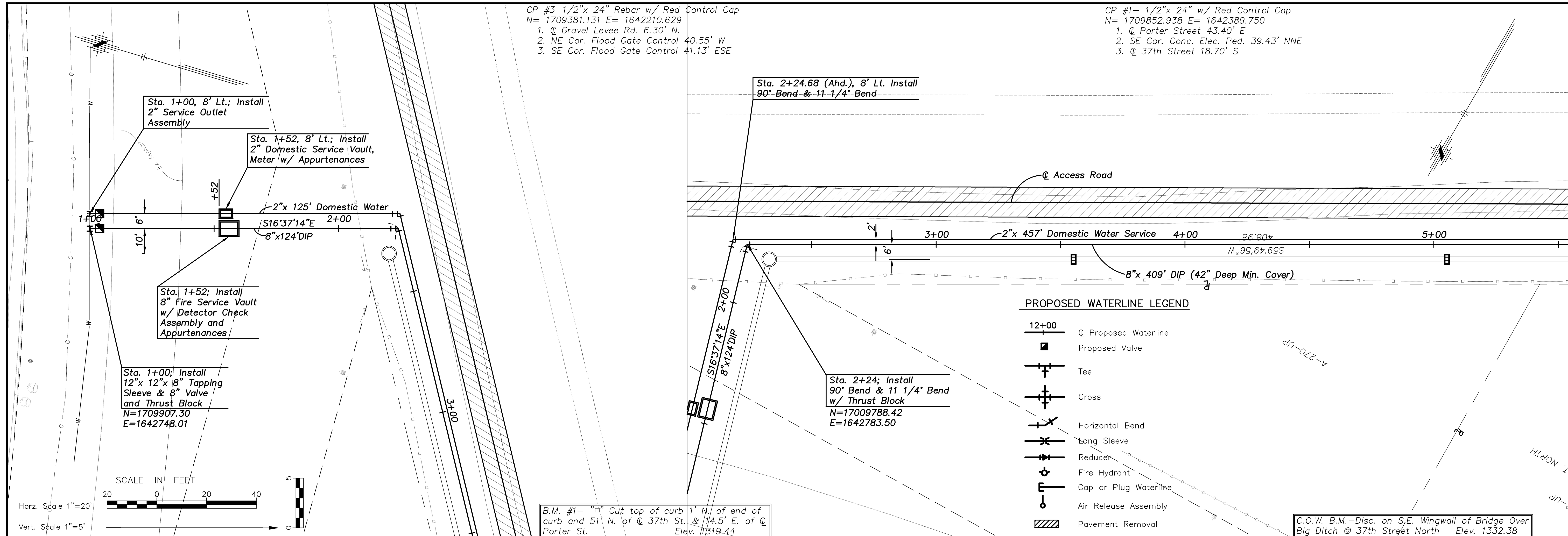
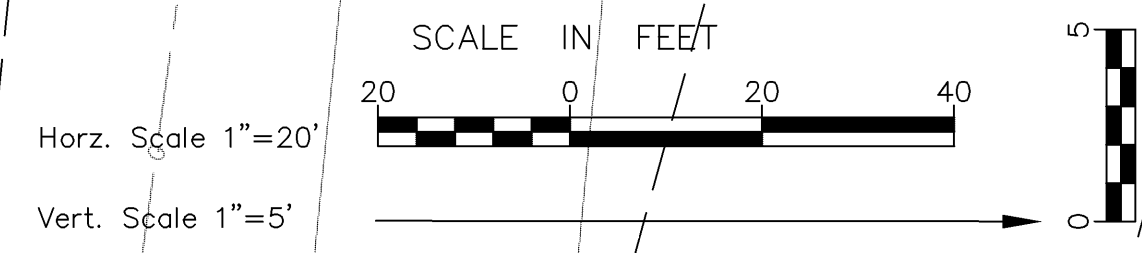
Sta. 2+24; Install
 90° Bend & 11 1/4' Bend
 w/ Thrust Block
 N=17009788.42
 E=1642783.50

B.M. #1- "□" Cut top of curb 1' N. of end of
 curb and 51' N. of @ 37th St. & 14.5' E. of @
 Porter St. Elev. 1319.44

C.O.W. B.M.-Disc. on S.E. Wingwall of Bridge Over
 Big Ditch @ 37th Street North Elev. 1332.38

PROPOSED WATERLINE LEGEND

- 12+00 @ Proposed Waterline
- Proposed Valve
- Tee
- Cross
- Horizontal Bend
- Long Sleeve
- Reducer
- Fire Hydrant
- Cap or Plug Waterline
- Air Release Assembly
- Pavement Removal



Cook, Flatt & Strobel
ENGINEERS, P.A.

CFS

CFS PROJECT NO: 08-527

CITY OF WICHITA, KANSAS
PUMP STATION NO. 11
WATER DISTRIBUTION SYSTEM IMPROVEMENTS
 STA. 1+00 TO STA. 5+00

DATE: _____ DESIGNED BY: _____ DRAWN BY: _____ CHECKED BY: _____

SHEET TITLE: **WATERLINE PLAN/PROFILE**

PROJECT NUMBER: **468-84477**

FINAL PLANS

SHEET NUMBER: **C27 of C31**

J:\2008Proj\08527\DWG\027-028_PP01.dwg 3/24/2010 - 7:39am lmartin