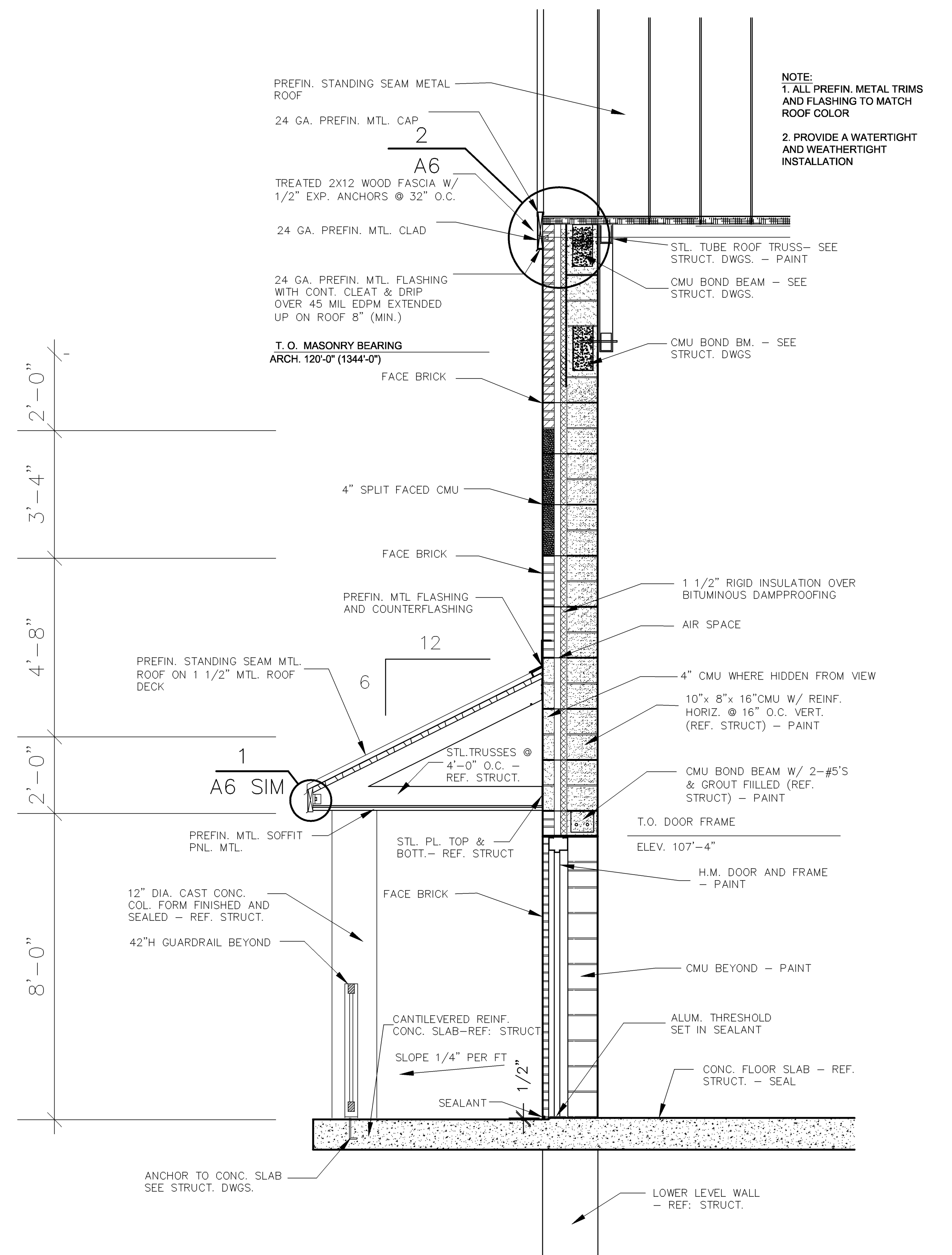



**B SECTION AT COILING DOOR**  
 1/2" = 1'-0"



**A SECTION AT WEST DOOR**  
 1/2" = 1'-0"



**LawKington Architecture**  
 345 RIVERVIEW, WICHITA, KS 67203  
 Phone (316) 268-0230 Fax: (316) 268-0205

---


CITY OF WICHITA, KANSAS  
 PUMP STATION NO. 11

---

**ARCHITECTURAL**

---

PUMP STATION WALL SECTIONS



**Cook, Flatt & Strobel ENGINEERS, P.A.**

DESIGNED ---	SCALE ---
DETAILED ---	DATE 3/11/10
CHECKED ---	SHEET <b>A5</b> OF 6