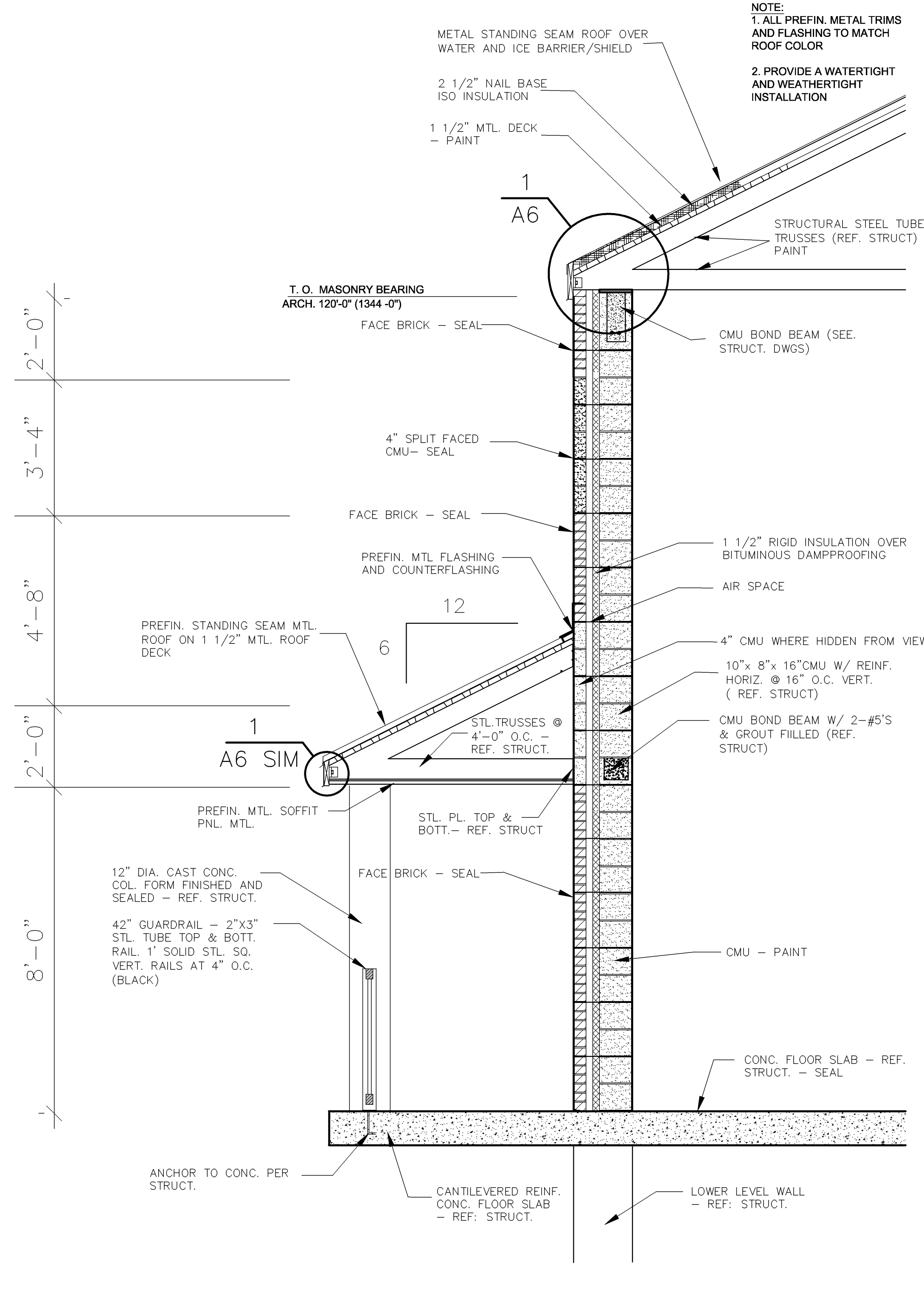
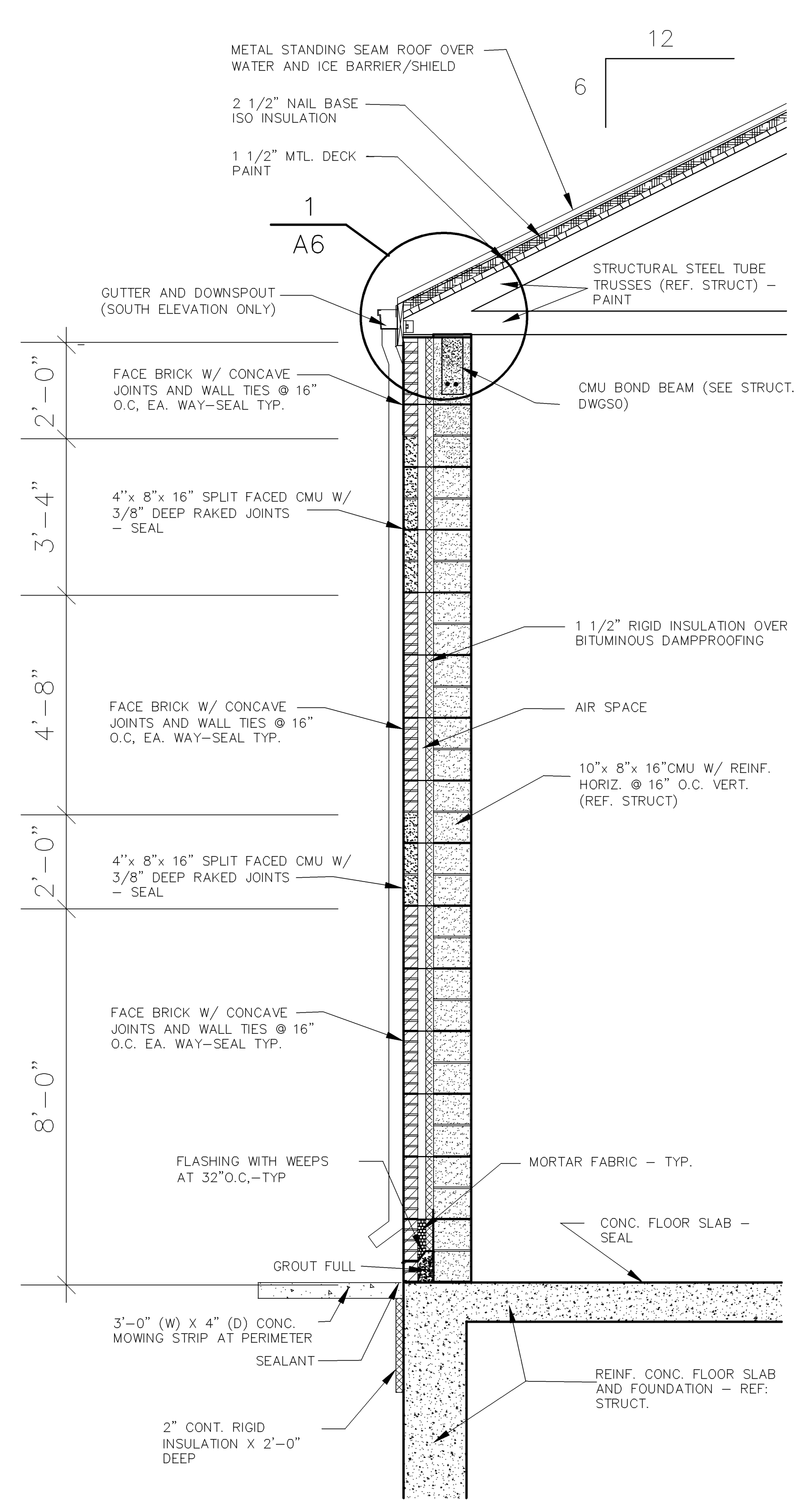


C **WALL SECTION AT WINDOW**
 1/2" = 1'-0"



B **WALL SECTION AT N. CANOPY**
 1/2" = 1'-0"



A **WALL SECTION**
 1/2" = 1'-0"

LawKingdon
Architecture
 345 RIVERVIEW, WICHITA, KS 67203
 Phone (316) 268-0230 Fax: (316) 268-0205

CITY OF WICHITA, KANSAS
 PUMP STATION NO. 11
 ARCHITECTURAL
 PUMP STATION
 WALL SECTIONS

CFS
Cook, Flatt & Strobel
 ENGINEERS, P. A.
 DESIGNED --- SCALE ---
 DETAILED --- DATE 3/11/10
 CHECKED --- SHEET **A4** OF 6