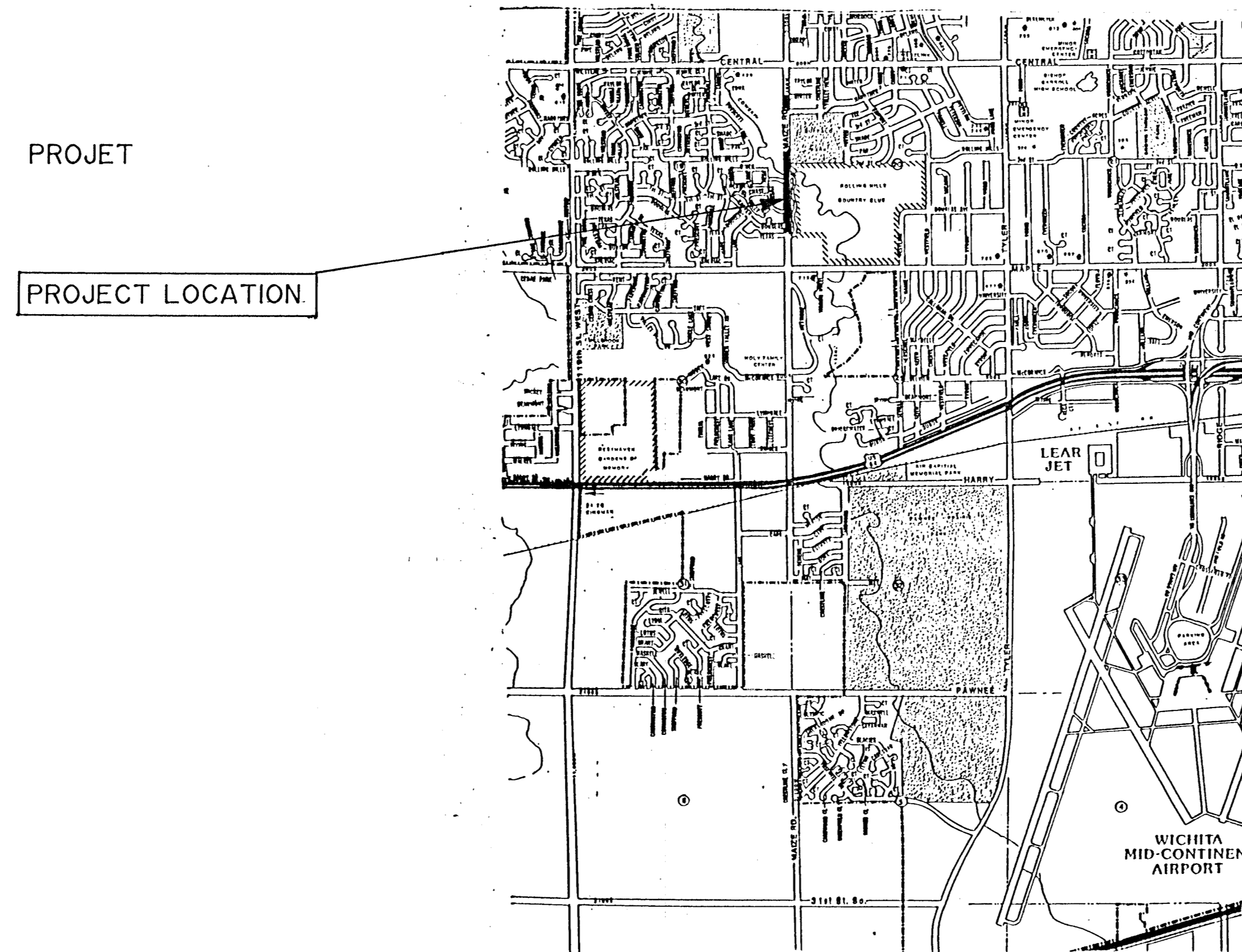


CITY OF WICHITA, KANSAS
LANDSCAPE PLANS
MAIZE ROAD
FROM NORTH OF MAPLE TO SOUTH OF CENTRAL



LOCATION MAP

PROJECT NO.: 472-76-245-82025-000-000-001

INDEX # 705483

MICHAEL E. LINDEBAK, P.E., CITY ENGINEER

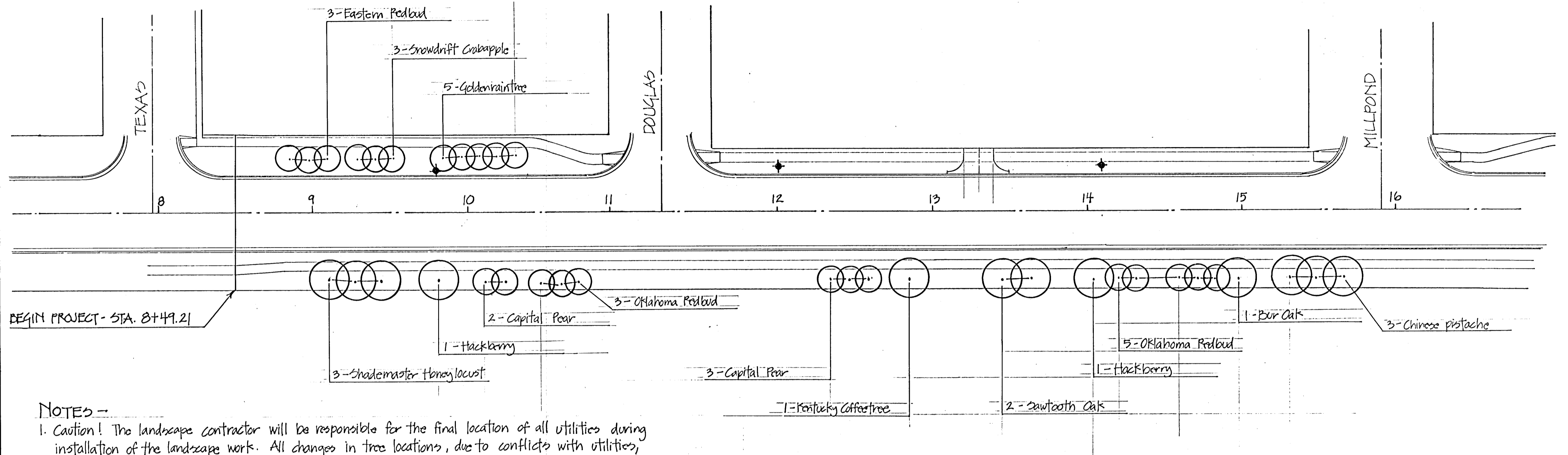
INDEX :

SHEET	1	TITLE SHEET
	2-3	PLAN SHEETS
	4	BRIDGE LANDSCAPING

PLANT LIST -

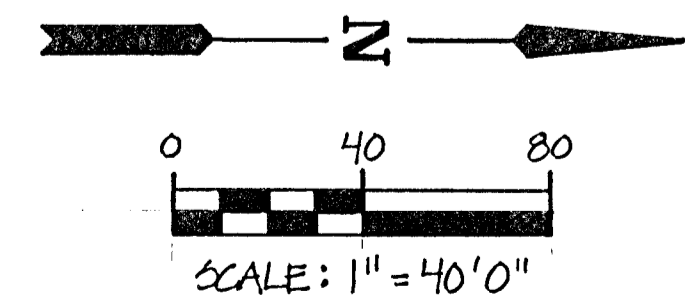
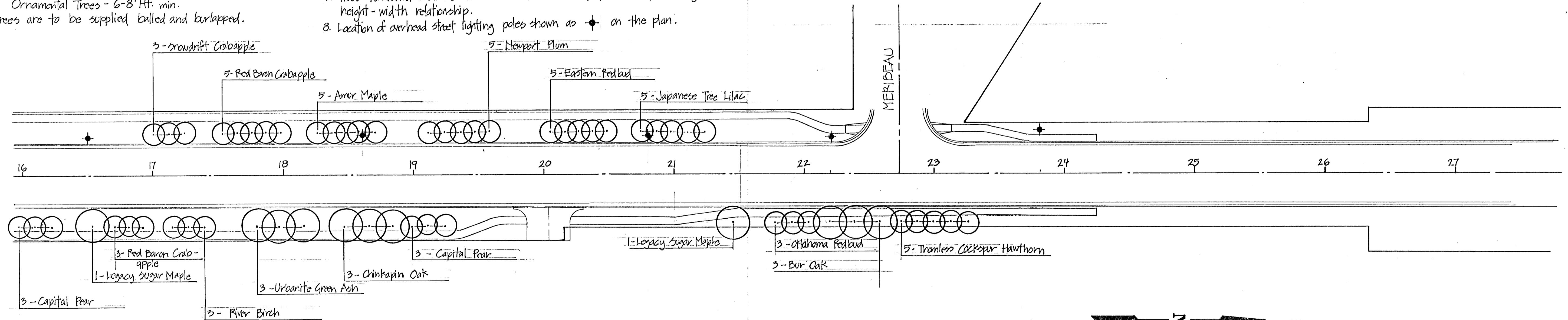
QTY.	BOTANICAL NAME	COMMON NAME
SHADE TREES -		
6	<i>Acer saccharum</i> 'Legacy'	Legacy Sugar Maple
5	<i>Celtis occidentalis</i>	Hackberry
6	<i>Fraxinus pennsylvanica</i> 'Marshall's Seedless'	Marshall's Seedless Ash
6	<i>Fraxinus pennsylvanica</i> 'Urbanite'	Urbanite Green Ash
11	<i>Gleditsia triacanthos inermis</i> 'Shademaster'	Shademaster Honeylocust
2	<i>Gymnocladus dioica</i>	Kentucky Coffeetree
6	<i>Liquidambar styraciflua</i>	Sweetgum
16	<i>Pistacia chinensis</i>	Chinese Pistache
7	<i>Quercus acutissima</i>	Sawtooth Oak
7	<i>Quercus macrocarpa</i>	Bur Oak
7	<i>Quercus muehlenbergii</i>	Chinkapin Oak
ORNAMENTAL TREES -		
8	<i>Acer ginnala</i>	Amur Maple
6	<i>Betula nigra</i>	River Birch
18	<i>Cercis canadensis</i>	Eastern Redbud
22	<i>Cercis reniformis</i> 'Oklahoma'	Oklahoma Redbud
15	<i>Crataegus crusgalli inermis</i>	Thornless Cockspur Hawthorn
14	<i>Crataegus phaenopyrum</i>	Washington Hawthorn
17	<i>Koeleruteria paniculata</i>	Goldenrain tree
14	<i>Malus sp.</i> 'Red Baron'	Red Baron Crabapple
12	<i>Malus sp.</i> 'Snowdrift'	Snowdrift Crabapple
11	<i>Prunus cerasifolia</i> 'Newport'	Newport Plum
9	<i>Pyrus calleryana</i> 'Aristocrat'	Aristocrat Pear
16	<i>Pyrus calleryana</i> 'Capital'	Capital Pear
19	<i>Syringa reticulata</i>	Japanese Tree Lilac

Note: Size - Shade Trees - 2-2 1/2" caliper min.
 Ornamental Trees - 6-8' Ht. min.
 All trees are to be supplied balled and burlapped.

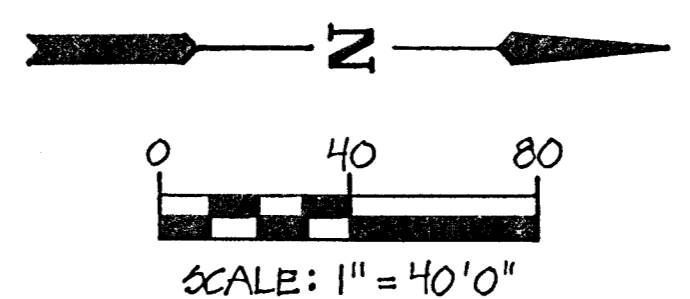
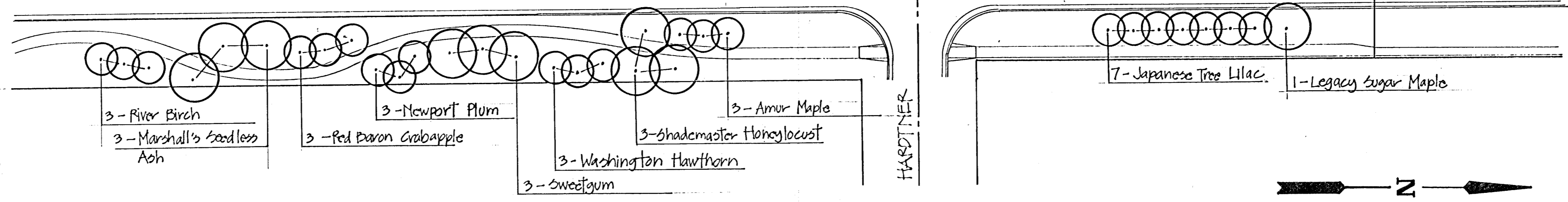
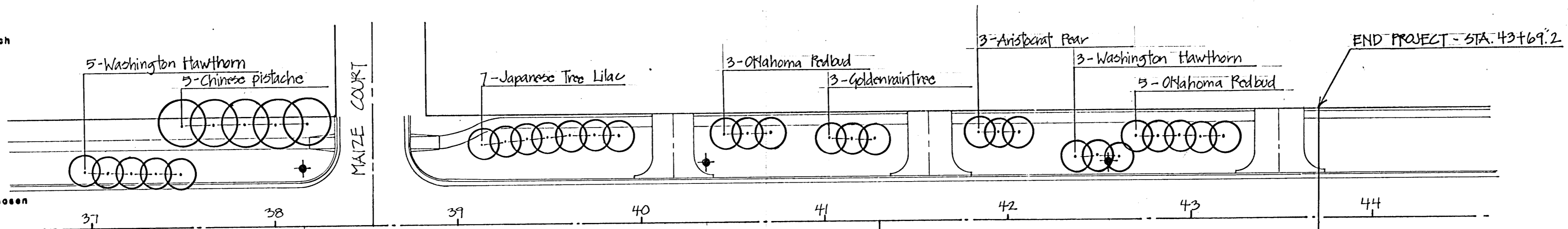
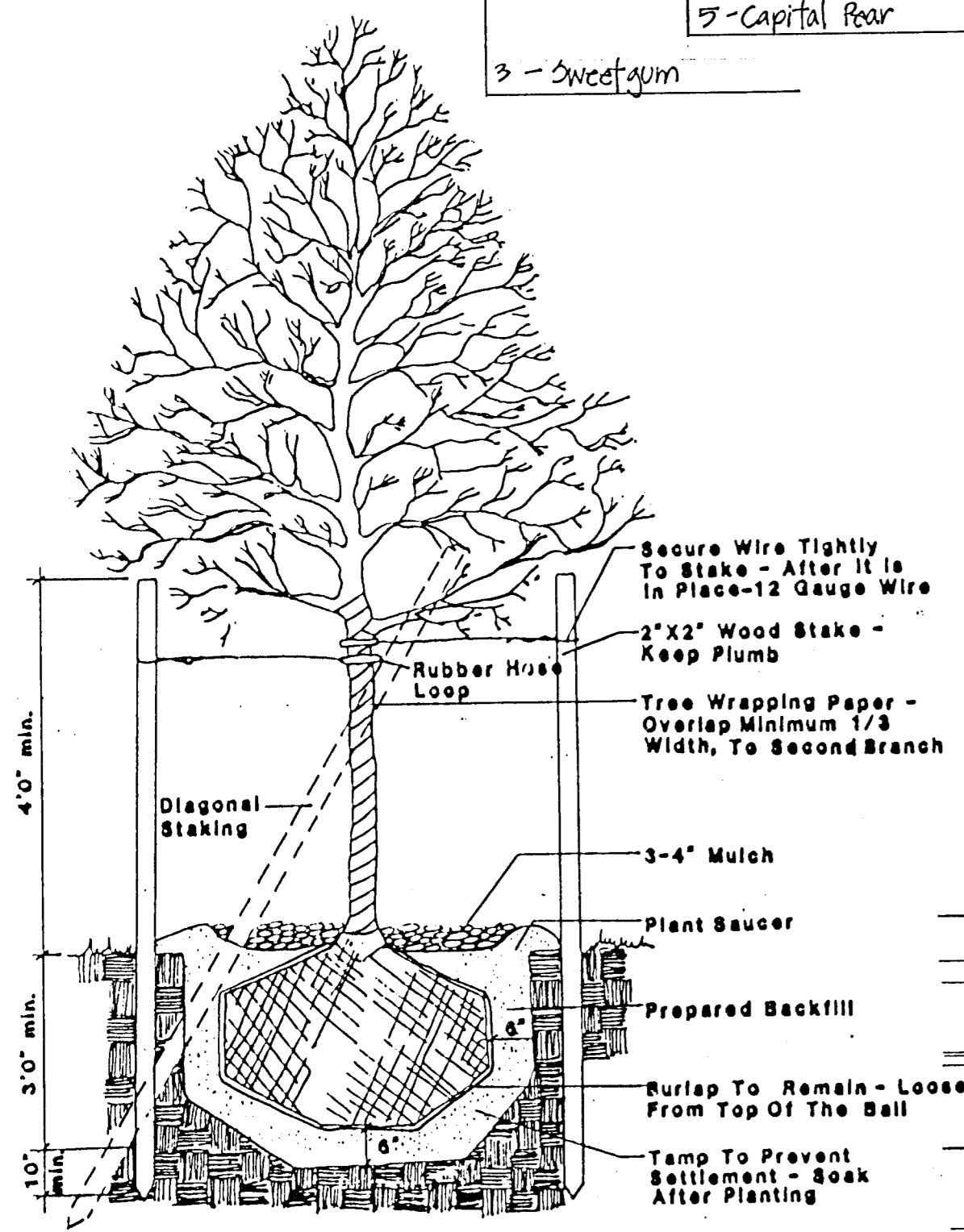
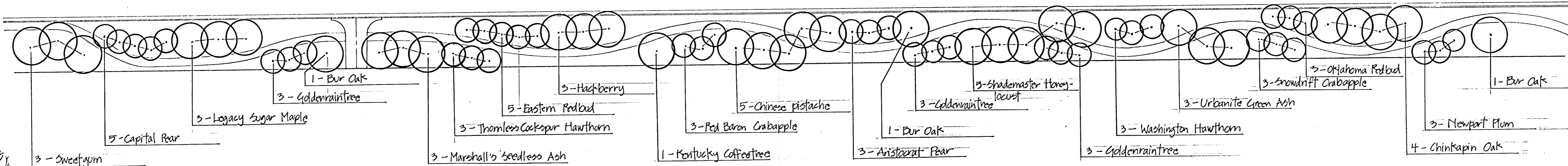
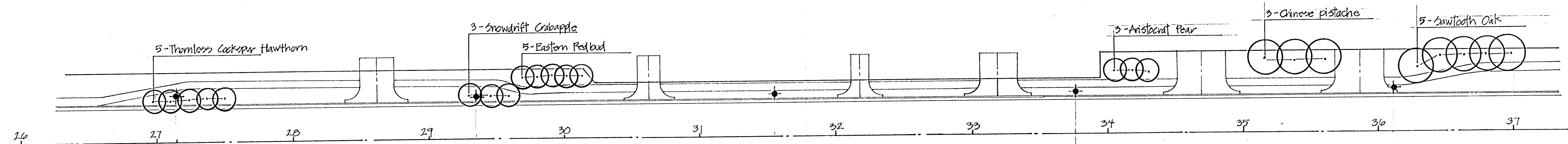


NOTES -

1. Caution! The landscape contractor will be responsible for the final location of all utilities during installation of the landscape work. All changes in tree locations, due to conflicts with utilities, will be done as directed by the project engineer.
2. Adjust the location of new tree planting, so that any existing trees are incorporated into the plan, all changes per the approval of the project engineer.
3. All trees to be planted, fertilized, staked, mulched, pruned and wrapped in accordance with standard practices. (See tree planting detail.)
4. Mulch is to be chipped wood "tree service" mulch not infested with insects or disease.
5. Coordinate planting plan with Maize Road paving plans - Project No. 87-U-1560-01.
6. All trees shall be northern grown - plants grown in nurseries one (1) year or more, located in hardiness zones 3-6, per the U.S.D.A. map.
7. Trees furnished shall be well-branched and well-proportioned particularly with respect to the height-width relationship.
8. Location of overhead street lighting poles shown as ⚡ on the plan.



MUNICIPAL ENGINEERS		
Civil Engineers & Land Surveyors		
254 Laura, Suite 201 Wichita, Kansas 67211		
MAIZE ROAD		98-11
SCALE:	APPROVED BY:	DRAWN BY:
DATE:		REVISED:
LANDSCAPE PLAN		
		DRAWING NUMBER 2 of 4

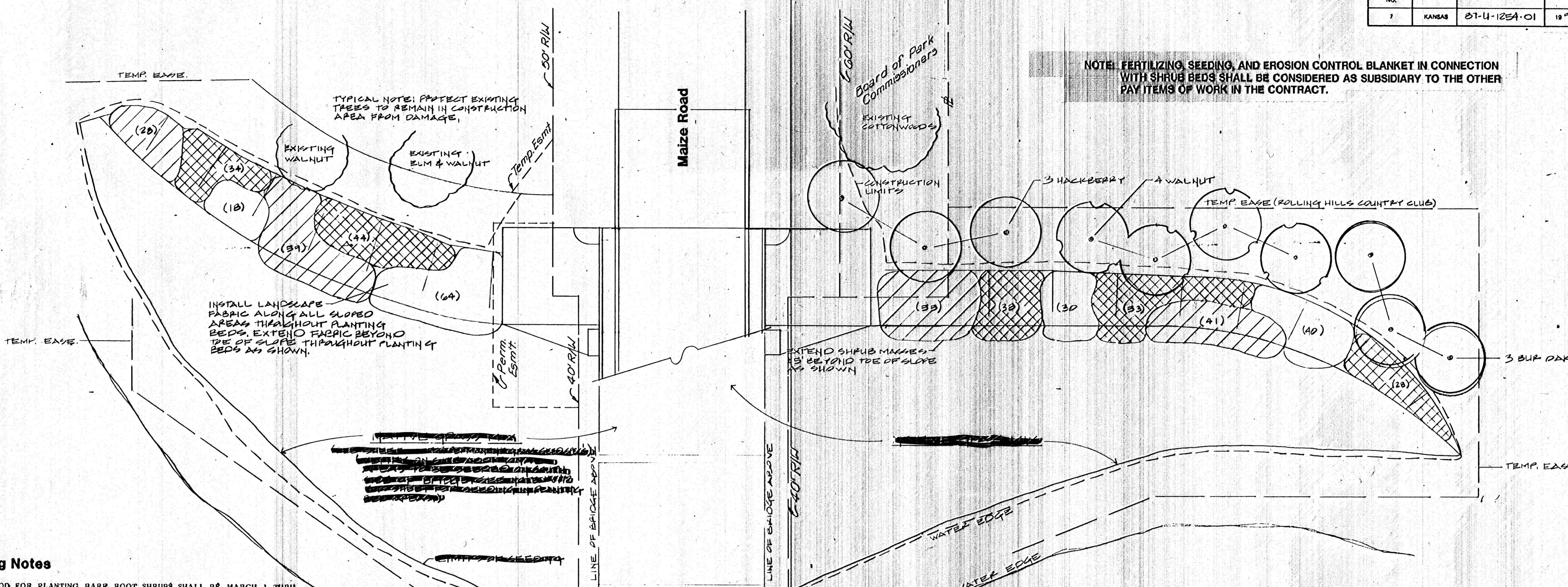


90-11

MAIZE ROAD

SCALE:	APPROVED BY:	DRAWN BY:
DATE:		REVISED:
LANDSCAPE PLAN		
		DRAWING NUMBER 3 of 4

MUNICIPAL ENGINEERS
Civil Engineers & Land Surveyors
254 Laura, Suite 201
Wichita, Kansas 67211



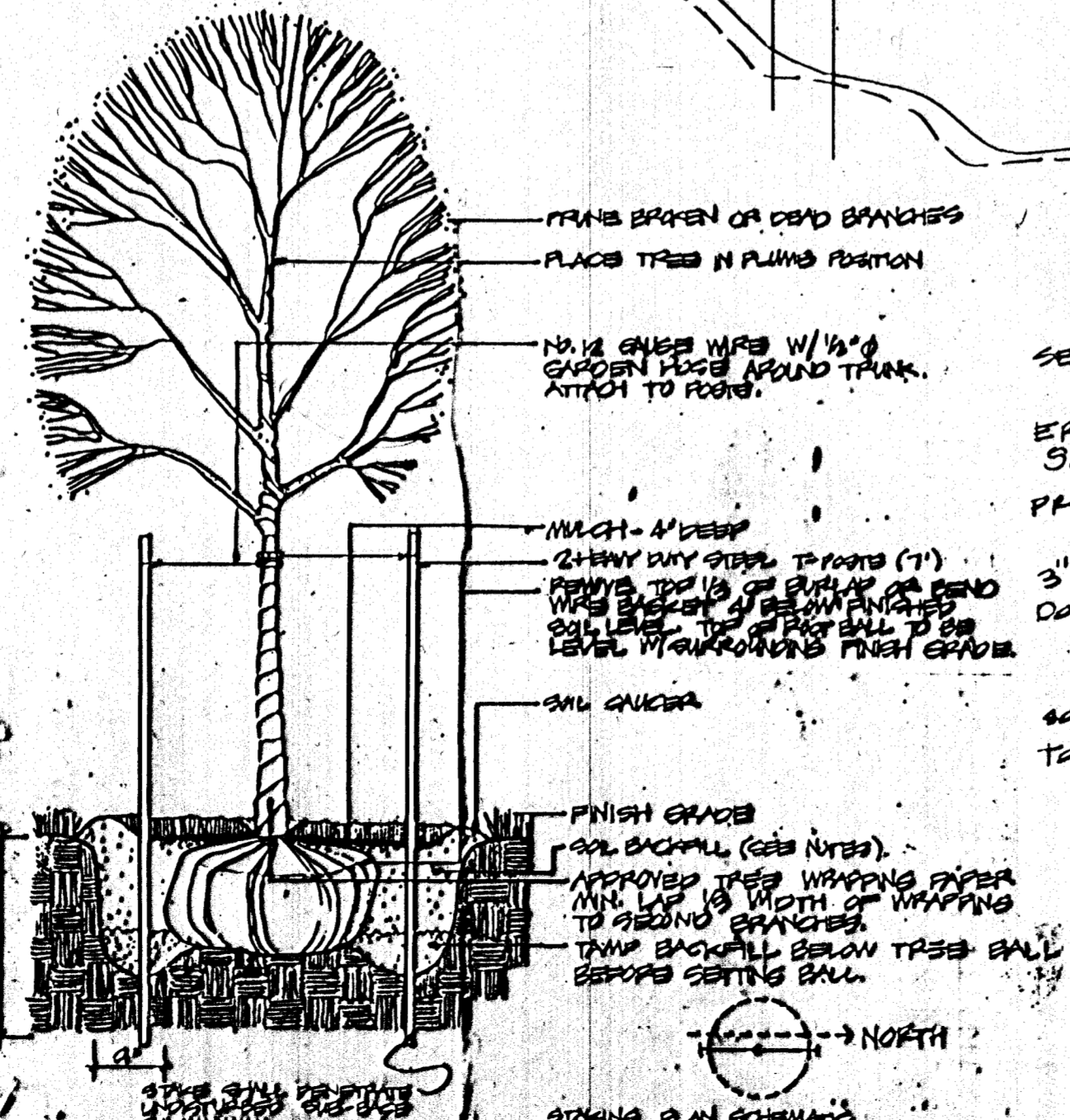
NOTE: FERTILIZING, SEEDING, AND EROSION CONTROL BLANKET IN CONNECTION WITH SHRUB BEDS SHALL BE CONSIDERED AS SUBSIDIARY TO THE OTHER PAY ITEMS OF WORK IN THE CONTRACT.

INSTALL LANDSCAPE FABRIC ALONG ALL SLOPED AREAS THROUGHOUT PLANTING BEDS. EXTEND FABRIC BEYOND DE OF SLOPE THROUGHOUT PLANTING BEDS AS SHOWN.

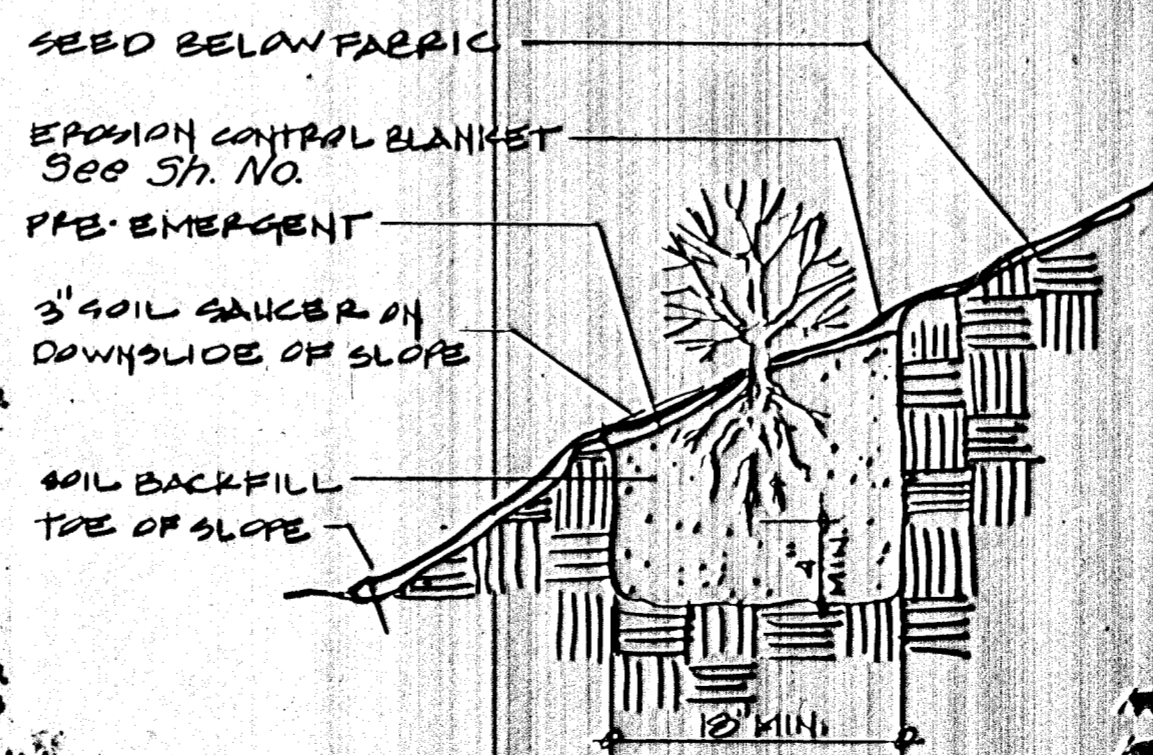
TYPICAL NOTE: PROTECT EXISTING TREES TO REMAIN IN CONSTRUCTION AREA FROM DAMAGE.

Planting Notes

1. TIME PERIOD FOR PLANTING BARE ROOT SHRUBS SHALL BE MARCH 1 THRU APRIL 30. CONTAINER GROWN OR POTTED SHRUBS SHALL BE USED IF PLANTED AT OTHER TIMES.
 2. FERTILIZER FOR TREE AND SHRUB PLANTINGS TO BE A SYNTHETIC ORGANIC TYPE WITH A 12-24-12 OR SIMILAR ANALYSIS.
 3. MULCH TO BE CHIPPED WOOD "TREE SERVICE" MULCH NOT INFESTED WITH INSECTS AND DISEASE.
 4. EROSION CONTROL BLANKETS MAY BE SUPPLIED BY THE FOLLOWING MANUFACTURERS:
 AMERICAN EXCELSIOR CO. - CURLEX BLANKETS
 PPS PACKAGING CO. - EXCELSIOR BLANKETS
 RIDGEWAY WOOD PRODUCTS - RIDGEROW BLANKETS
 NORTH AMERICAN GREEN INC. - EROSION BLANKET S-75
 5. SEED MIX AND FERTILIZER FOR PLANTING BED AREAS TO BE:
 LITTLE BLUESTEM 'ALDOUS' AT 1 LB. PLS/1000 S.F.
 SIDCOATS GRAMA 'TRAILWAY' AT 2 LB. PLS/1000 S.F.
 FERTILIZER (16-20-0) AT 3 LBS./1000 S.F.
 6. INSTALL SEED PRIOR TO INSTALLATION OF EROSION CONTROL BLANKET. SEE SHEET 30A FOR ADDITIONAL NOTES.
 7. APPLY APPROVED PRE-EMERGENT CHEMICAL TO SOIL SURFACE OF EXCAVATED AREA FOR EACH SHRUB TO INHIBIT GERMINATION OF GRASS SEED. # PLANTS AND MATERIALS SHALL BE APPROVED BY THE ENGINEER. APPROVAL OF SUBSTITUTIONS SHALL BE DETERMINED BY THE ENGINEER.
 8. CONTRACTOR SHALL FLAG THE OUTLINE OF EACH SHRUB BED AREA AND TREE LOCATIONS FOR THE ENGINEER'S APPROVAL BEFORE PLANTING. SPACE FLAGS FOR BED AREAS SUCH THAT THE BED CONFIGURATION CAN BE EASILY DISCERNED FOR INSPECTION. USE FLUORESCENT ORANGE WIRE STAKE FLAGS OR OTHER APPROVED COLOR FOR MARKING. REMOVE FLAGS AFTER COMPLETION OF PLANTING OPERATIONS IN BEDS.
 9. SOIL BACKFILL TO BE MADE OF EXCAVATED SOIL FROM PLANTING HOLE WORKED TO A FRIABLE CONSISTENCY BEFORE BACKFILLING. INCORPORATE FERTILIZER INTO THE SOIL SURFACE OF THE EXCAVATED AREA IMMEDIATELY AFTER PLANTING. APPLY AT THE RATE OF 1/2 LB./SHRUB OR 2 LBS./TREE.
 10. WATER PLANTINGS TO SETTLE BACKFILL AND FERTILIZER. RESHAPE SOIL SAUCERS AND LEVEL SOIL SURFACE AS SHOWN IN DETAILS.
 11. WHEN BARE ROOT SHRUBS ARE PROVIDED THE ESTABLISHMENT PERIOD FOR TREES AND SHRUBS SHALL BE EXTENDED TO 90 (NINETY) DAYS.
 12. SHRUBS SHALL BE MEASURED AND PAID FOR AT THE CONTRACT UNIT PRICE BID PER EACH FOR THE VARIOUS TYPES AND SIZES SHOWN. SAID PRICE SHALL INCLUDE ALL EXCAVATION AND BACKFILL, PLANT MATERIALS, FERTILIZER, EROSION CONTROL BLANKET, SHRUB BED AREA SEED AND FERTILIZER AND ALL ASSOCIATED LABOR, TOOLS, WATER AND INCIDENTALS REQUIRED TO ESTABLISH PLANTS AND RECEIVE ACCEPTANCE.
 13. TREES SHALL BE MEASURED AND PAID FOR AT THE CONTRACT UNIT PRICE BID PER EACH FOR THE VARIOUS TYPES AND SIZES SHOWN. SAID PRICE SHALL INCLUDE ALL EXCAVATION AND BACKFILL, PLANT MATERIALS, FERTILIZER, STAKING, MULCHING, WRAPPING AND ALL ASSOCIATED LABOR, TOOLS, WATER AND INCIDENTALS REQUIRED TO ESTABLISH PLANTS AND RECEIVE ACCEPTANCE.
- * Subsidiary to planting trees and shrubs
 # Pre-emergent



Typical Tree Planting Detail
NO SCALE



Typical Shrub Planting Detail
NO SCALE

Shrub Legend

- * (x) ELDERBERRY
 - * (x) POUGH-LEAVED DOGWOOD
 - * (x) WILD PLUM
- * TYPICAL SPACING IS 3'-0" O.C.
 (X) DENOTES SHRUB QUANTITY PER BED AREA.

Summary of Planting Quantities

Plant	Quantity	COMMON/BOTANICAL NAME	SIZE/PEC
TREES			
3	3	BUR OAK	2-2 1/2" CAL. B&B - 26" DIA. BALL MIN.
		QUERCUS MACROCARPA	
4	4	WALNUT	2-2 1/2" CAL. B&B - 26" DIA. BALL MIN.
		JUGLANS NIGRA	
3	3	HACKBERRY	2-2 1/2" CAL. B&B - 26" DIA. BALL MIN.
		CELTIS OCCIDENTALIS	
SHRUBS			
123	123	ELDERBERRY	15-18" BR
		SAMBUCUS CANADENSIS	
177	177	POUGH-LEAVED DOGWOOD	15-18" BR
		CORNUS DRUMMONDII	
132	132	WILD PLUM	15-18" BR
		PRUNUS AMERICANA	

NOTE: CONTAINER GROWN SHRUBS MAY BE PROVIDED AT CONTRACTOR'S OPTION. SEE PLANTING NOTES.

Notes on planting quantities and materials to be provided by the contractor.

Landscape Architects Planners
JONES PROFESSIONAL ASSOCIATION
 1115 East Second Street • Wichita, Kansas 67214 • (316) 262-4523

Designed: CRF
 Drawn: CRF
 Checked: J.J.
 Date: 9-20-90

Professional Engineer
MARGARET R. JONES
 20
 STATE OF KANSAS

PLANTING PLAN
MAIZE ROAD BRIDGE OVER COWSKIN CREEK
PROFESSIONAL ENGINEERING CONSULTANTS, P.A.
 ENGINEER
 WICHITA, KANSAS

Designed by: _____
 Checked by: _____
 Date: _____
 Job No. 87-247

