

STORM SEWER & LAKE PLANS FOR HARRISON PARK

PROJECT NO.

GENERAL NOTES

- ALL CONCRETE SHALL BE STANDARD PAVING MIX UNLESS OTHERWISE NOTED.
- THE CONTRACTOR SHALL BE RESPONSIBLE FOR PRESERVING PROPERTY IRONS. THE CONTRACTOR SHALL BE REQUIRED TO RE-ESTABLISH ANY PROPERTY IRONS WHICH ARE DAMAGED OR DESTROYED BY HIS CONSTRUCTION OPERATIONS. SUCH IRONS SHALL BE RE-ESTABLISHED BY A LICENSED LAND SURVEYOR IN ACCORDANCE WITH STATE LAWS.
- TREES TO BE REMOVED ARE MARKED **X**. ALL TREES WHICH IN THE OPINION OF THE FIELD ENGINEER CAN BE SAVED, SHALL BE SAVED.
- CONTRACTOR SHALL NOTIFY UTILITY COMPANIES OF CONSTRUCTION SCHEDULING.
- EXISTING UTILITIES AND THEIR LOCATIONS, AS SHOWN ON THE PLANS REPRESENT THE BEST INFORMATION OBTAINABLE FOR DESIGN. LOCATION INFORMATION HAS BEEN OBTAINED FROM THE VARIOUS COMPANIES AND IS EITHER FROM COMPANY UTILITY DRAWINGS OR COMPANY PROVIDED FIELD LOCATIONS. THE PLAN LOCATIONS SHOWN ARE NOT GUARANTEED. ADDITIONAL EXISTING UTILITIES MAY ALSO BE ENCOUNTERED.

NOTE: NOTIFY THE FOLLOWING COMPANIES PRIOR TO ANY EXCAVATION:

KANSAS ONE-CALL	1-800-344-7233
ARKLA GAS COMPANY	942-8350
KG&E (GAS DIST.)	832-0012
KG&E (ELECTRIC)	264-1141
MULTIMEDIA CABLEVISION	262-0661
SOUTHWESTERN BELL TELEPHONE	571-2115
CITY OF WICHITA WATER & SEWER	268-4908

- ALL THE TREES WILL BE REMOVED BY THE PARK DEPARTMENT PERSONNEL PRIOR TO THE START OF THE CONSTRUCTION.
- SEEDING, FERTILIZING AND MULCHING WILL BE DONE BY THE PARK DEPARTMENT PERSONNEL.

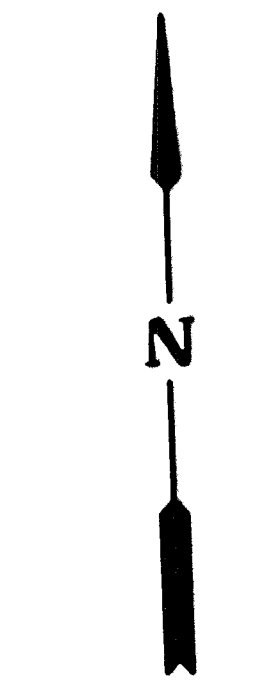
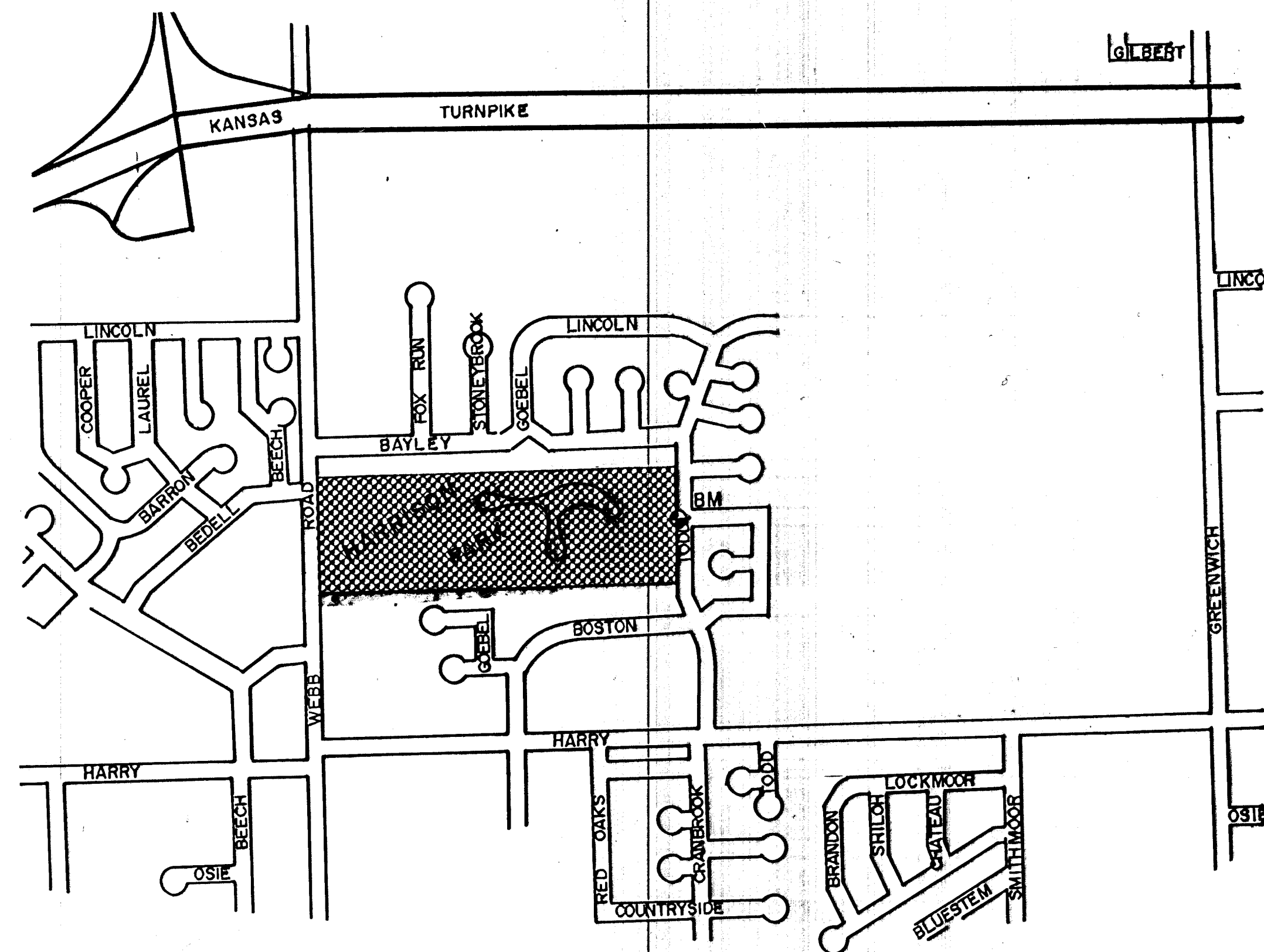
CITY OF WICHITA, KANSAS
MICHAEL E. LINDEBAK, CITY ENGINEER
FEBRUARY, 1993

INDEX CODE 614750

PROJECT NO. 472-82208

INDEX TO DRAWINGS

SHEET NO.	DESCRIPTION
1	TITLE SHEET
2	PLAN LAKE
3	PLAN & PROFILE LINE 1 & 2
4	STORM WATER DETAILS
5	SPOIL AREAS 1, 2, 3, & 4
6	CONSTRUCTION STAKING COORDINATES

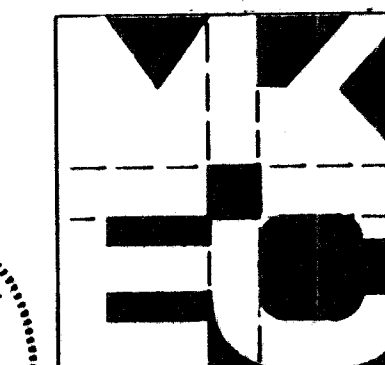


Not To Scale

BENCH MARK

"□" Cut @ Face Of West Curb On
Todd Street & Todd Court.
Elev. = 158.40

REVISED 3-93



**HARRISON PARK
STORM SEWER
& LAKE
PLANS**

Design
JNJ/KHB
Drawn by
DLM
Checked by
JNJ/KHB
Date
FEB., 1993
Job no.

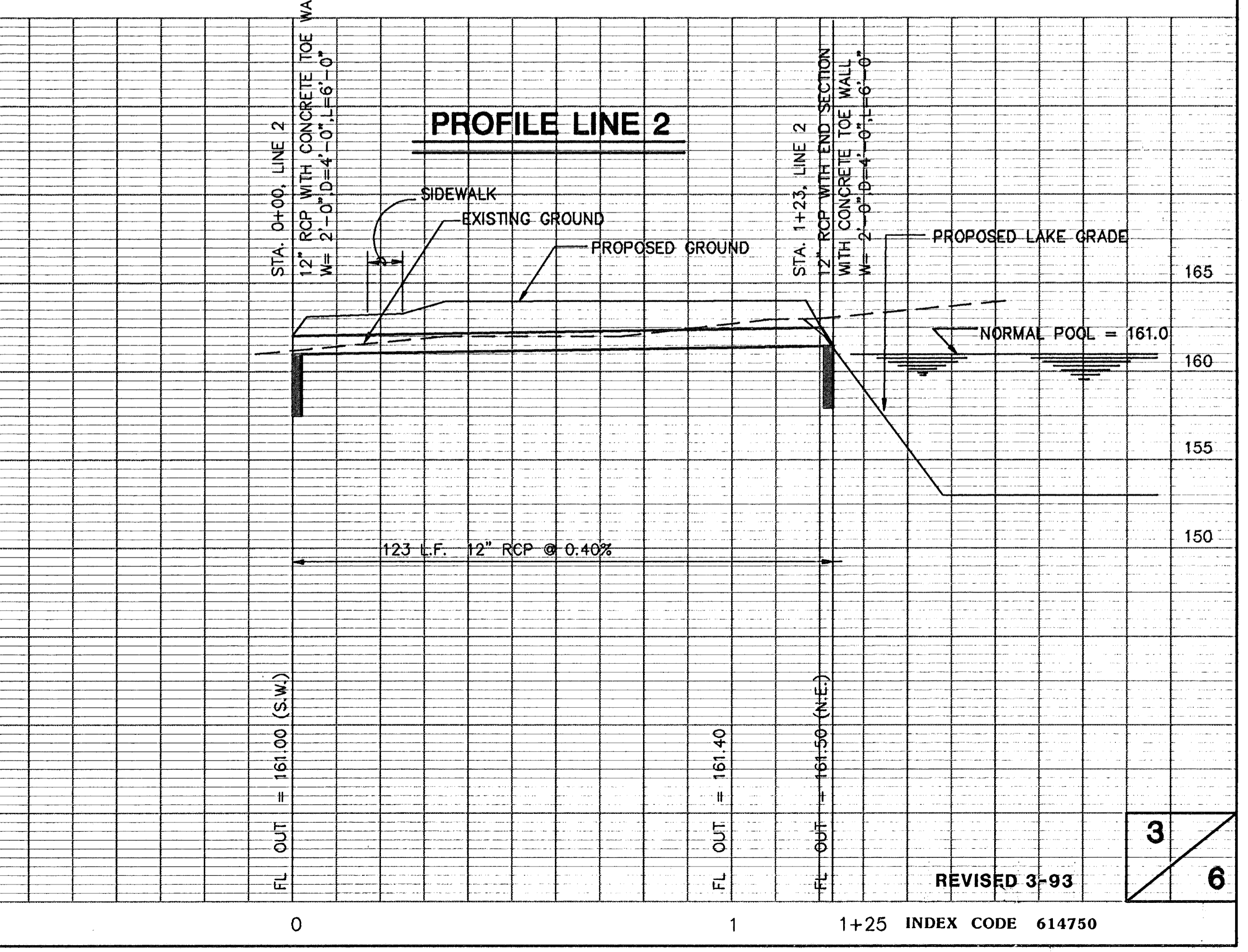
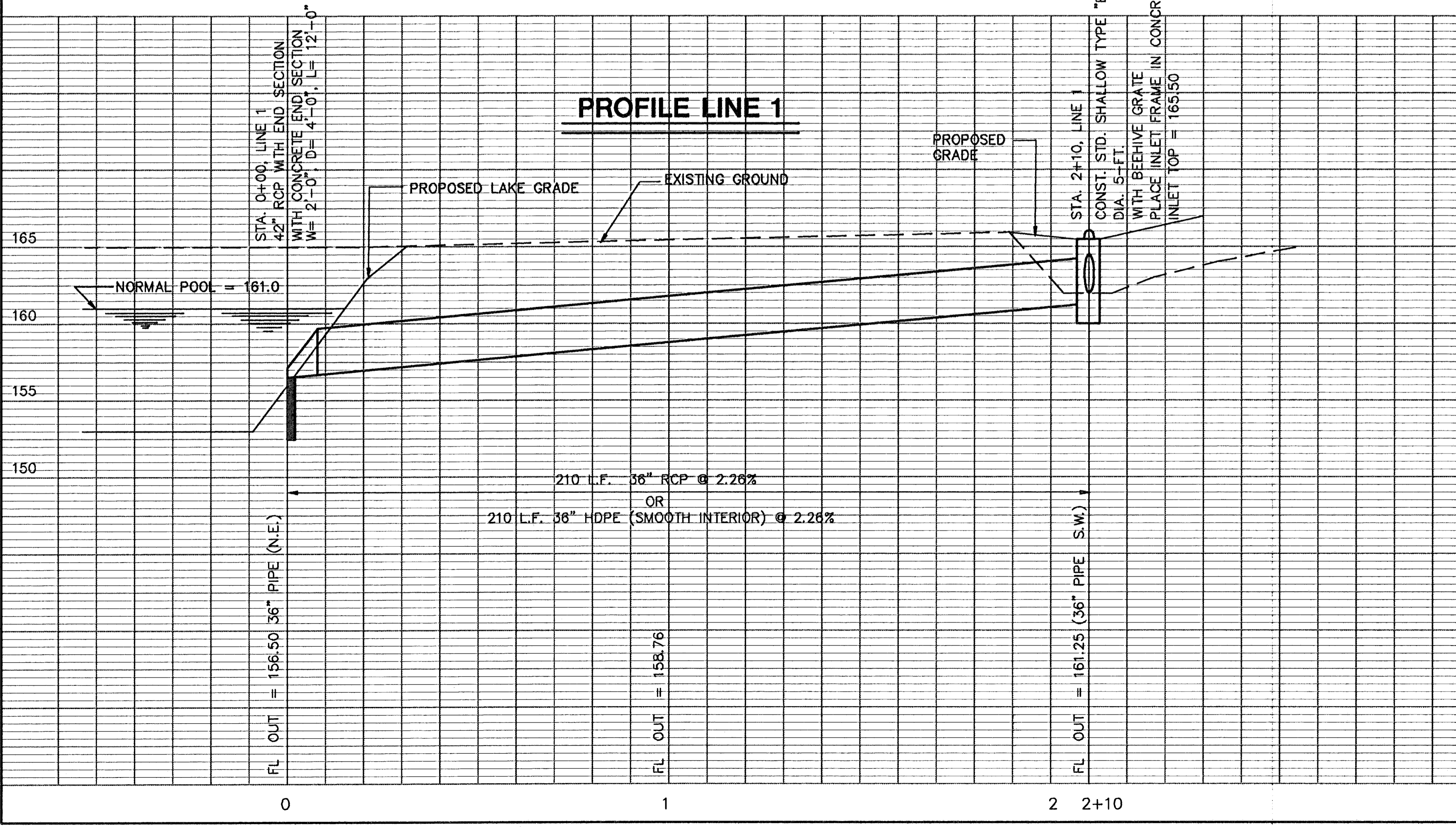
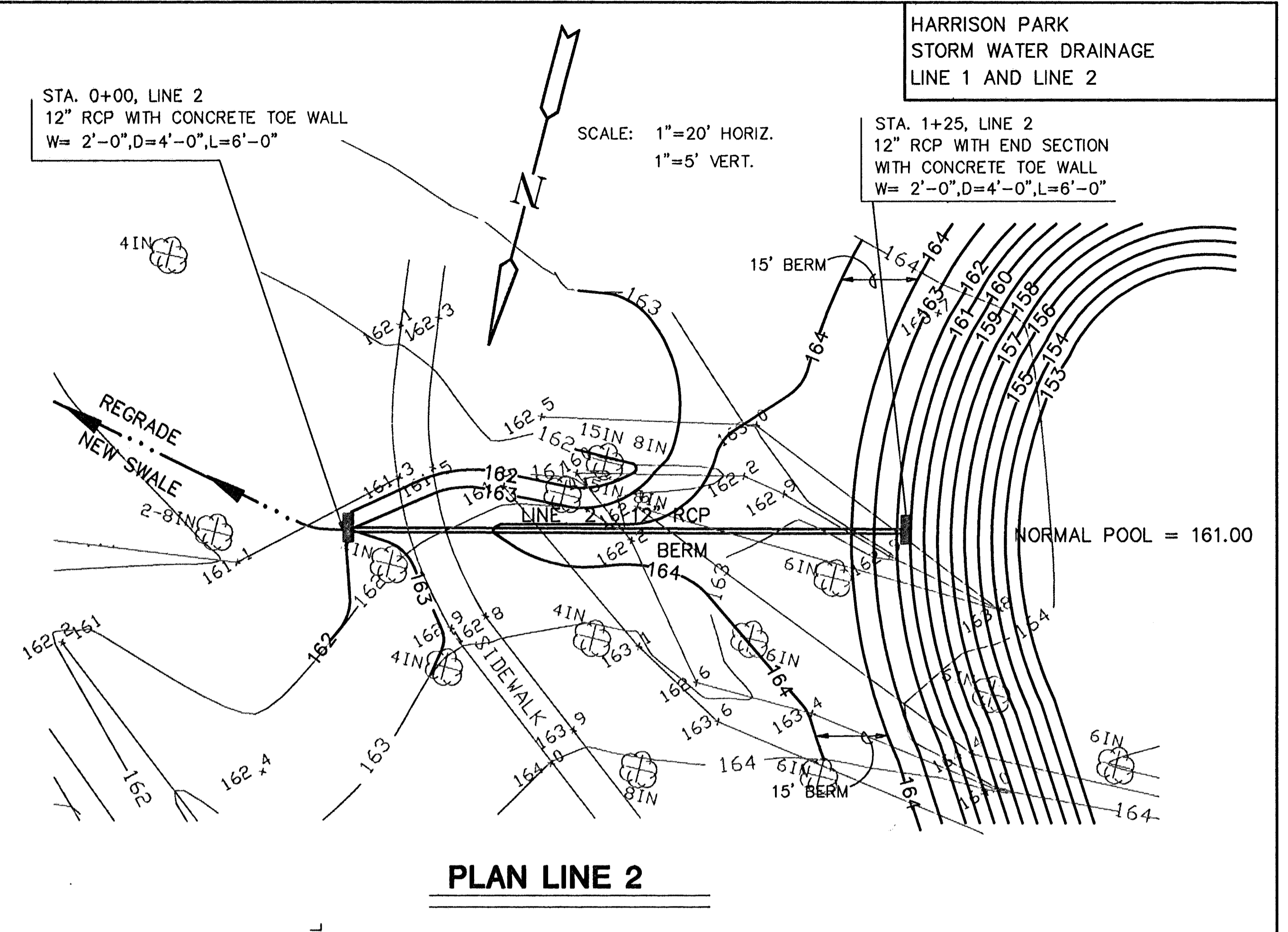
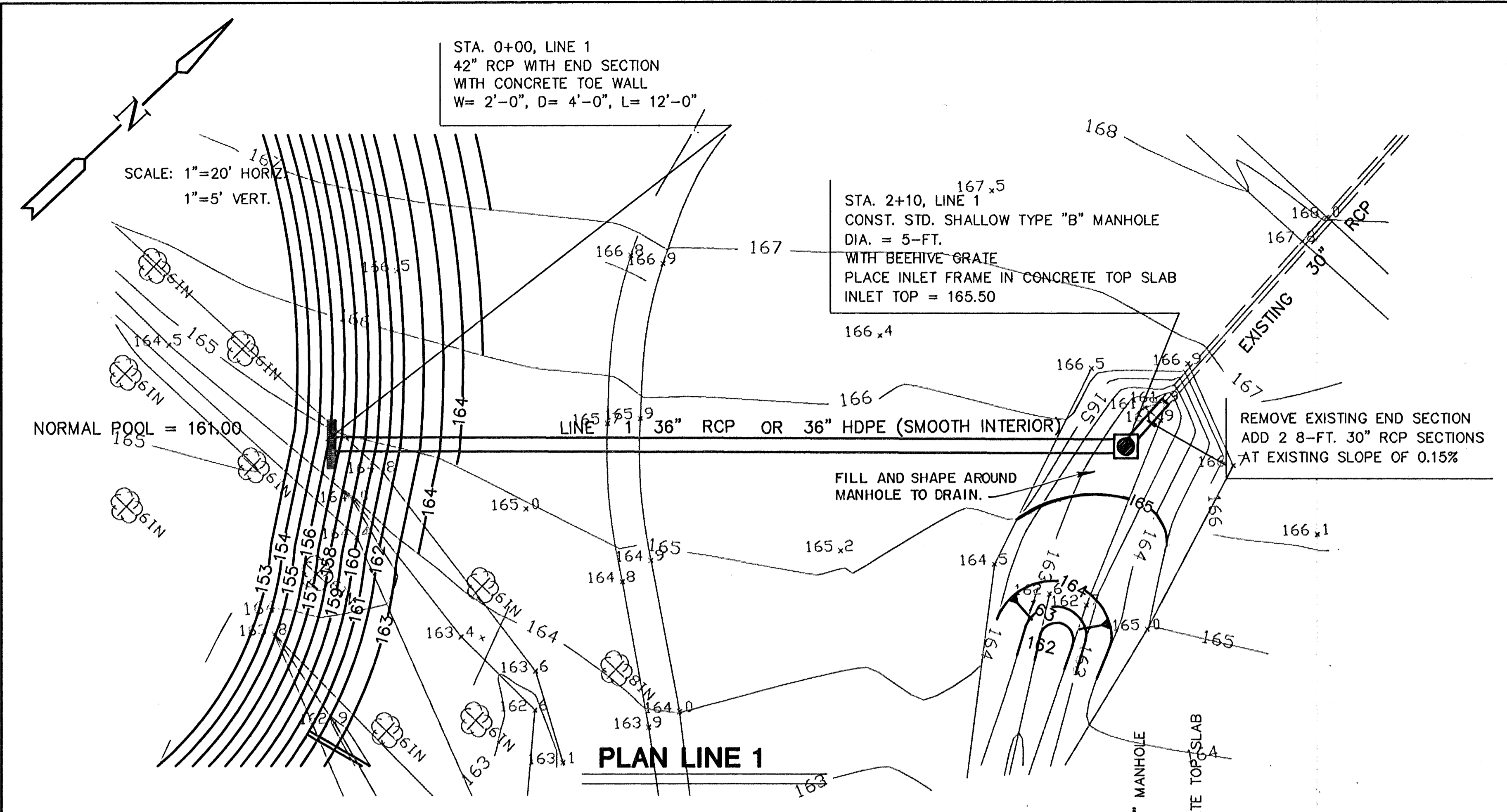


MID-KANSAS ENGINEERING CONSULTANTS INC.
3500 NORTH ROCK ROAD
BUILDING #800
WICHITA, KANSAS 67226

(316) 636-5566

Sheet
1
of
6

HARRISON PARK
STORM WATER DRAINAGE
LINE 1 AND LINE 2

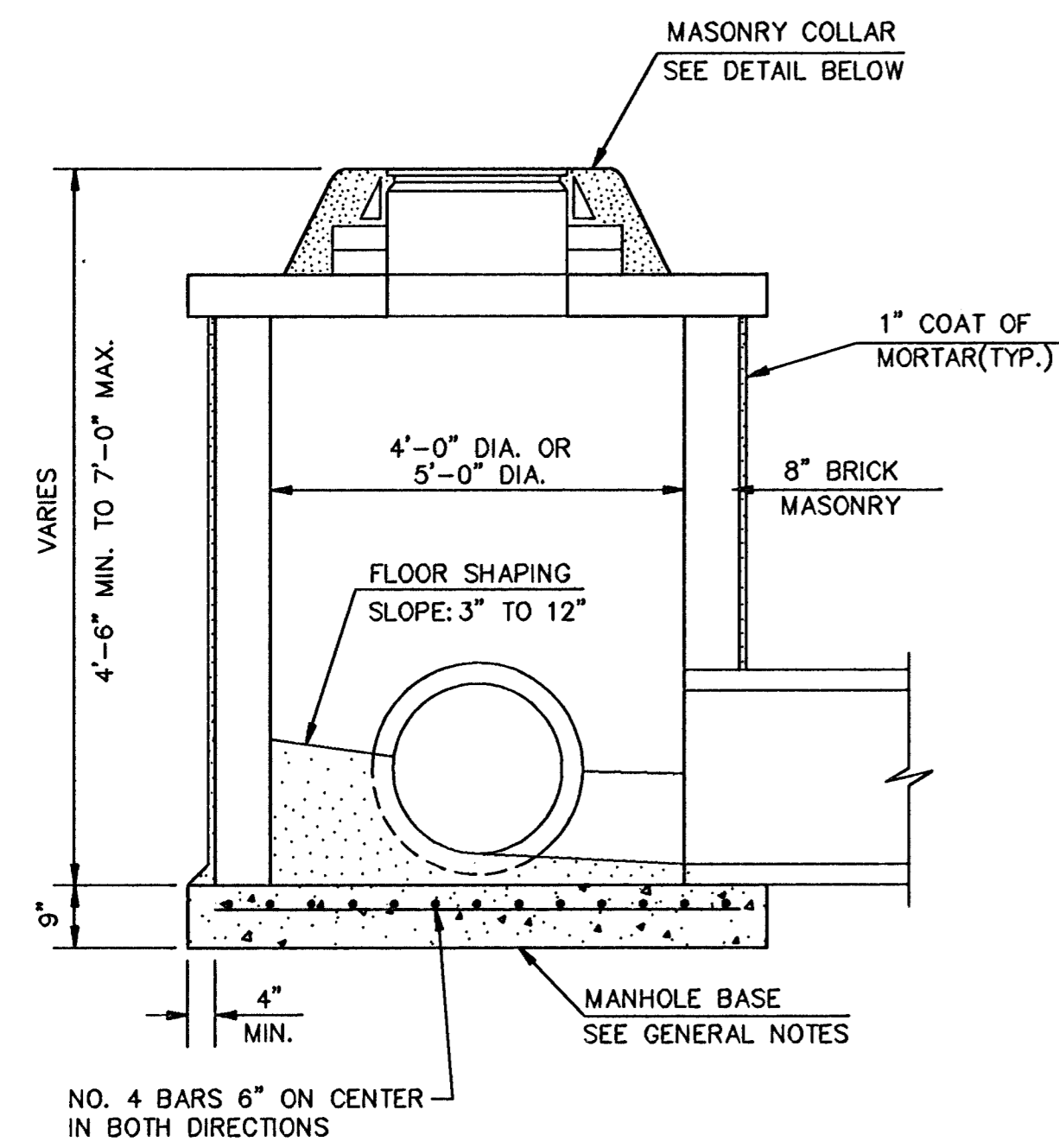


HSONPP

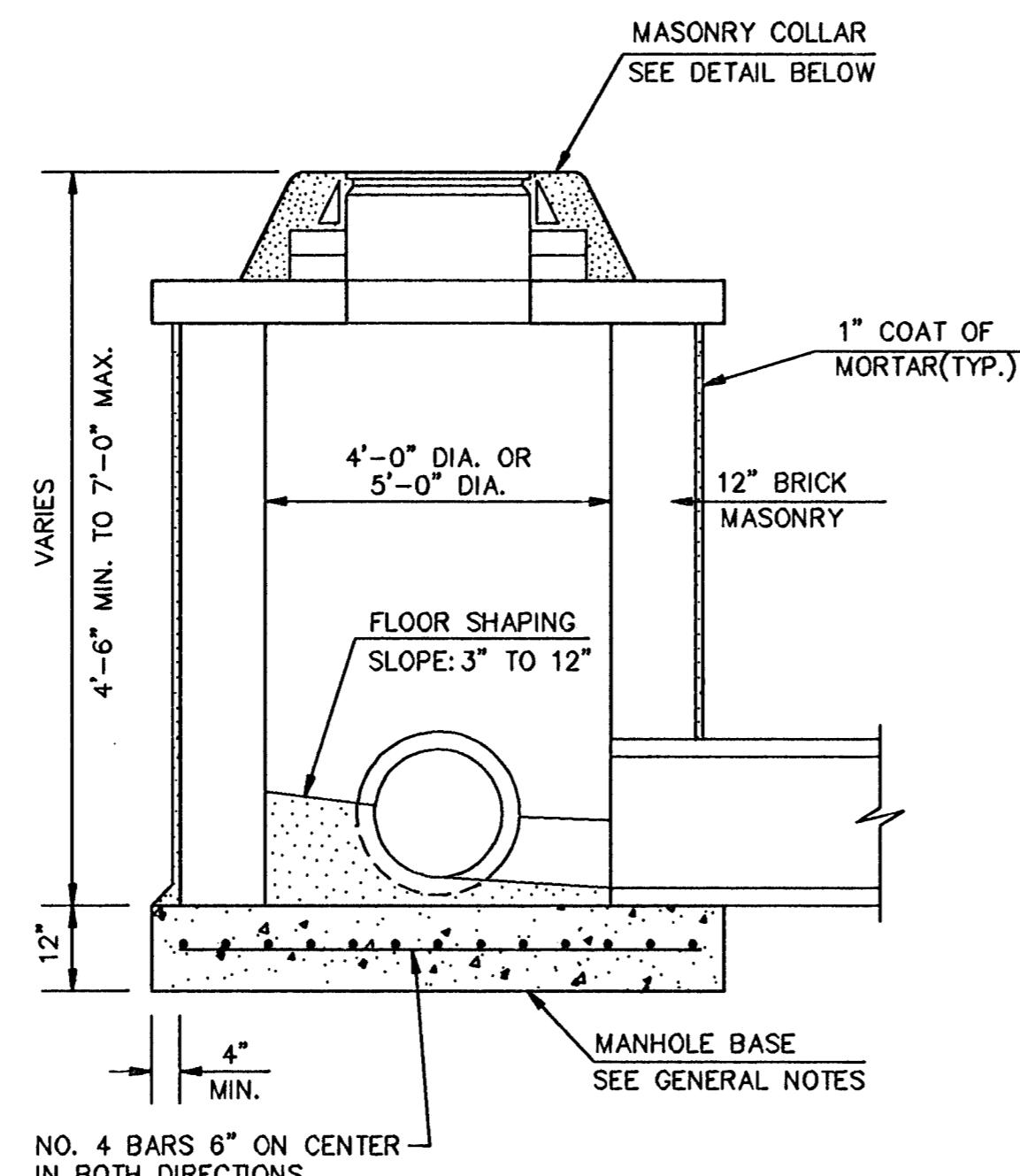
REVISED 3-93

3
6

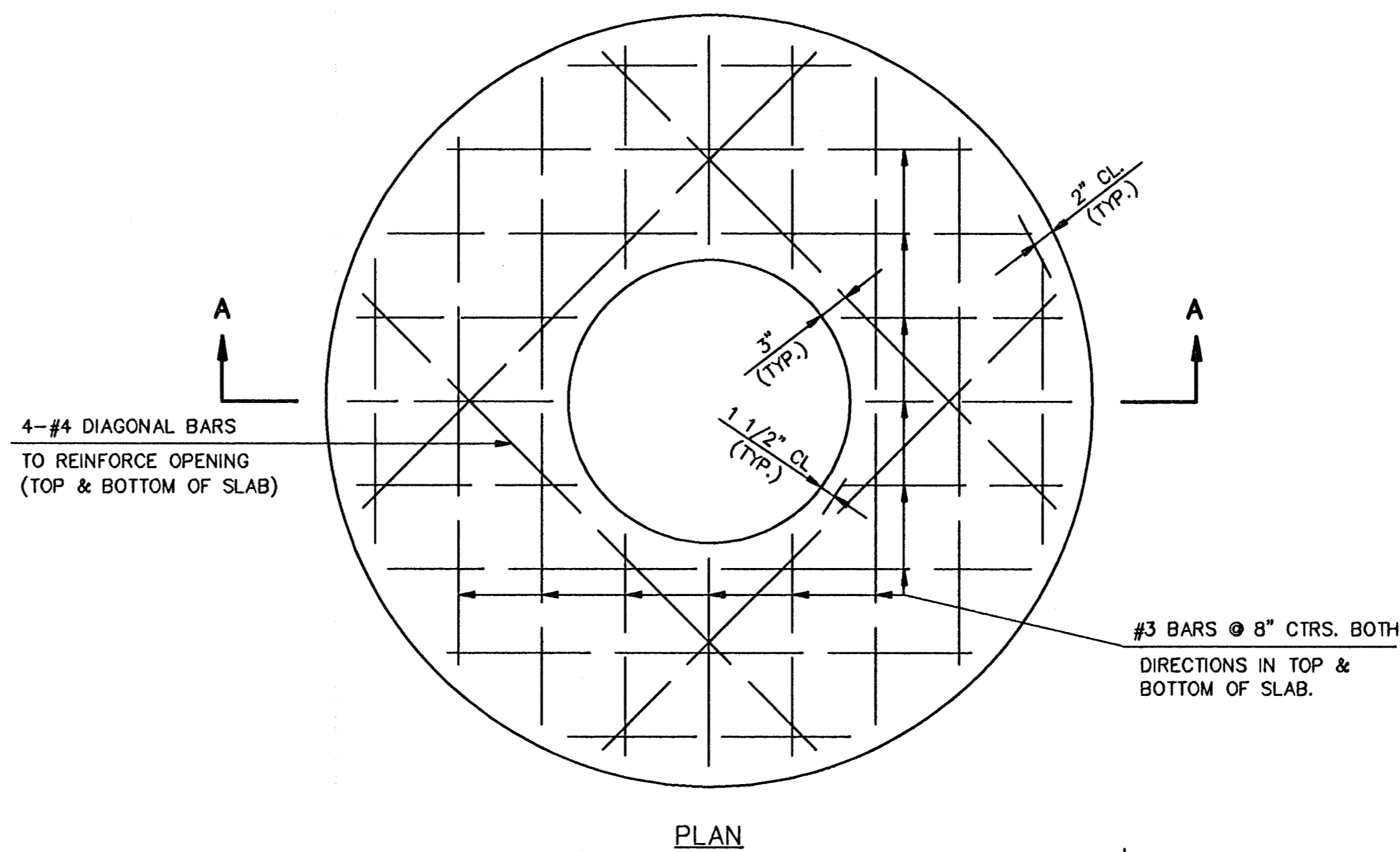
INDEX CODE 614750



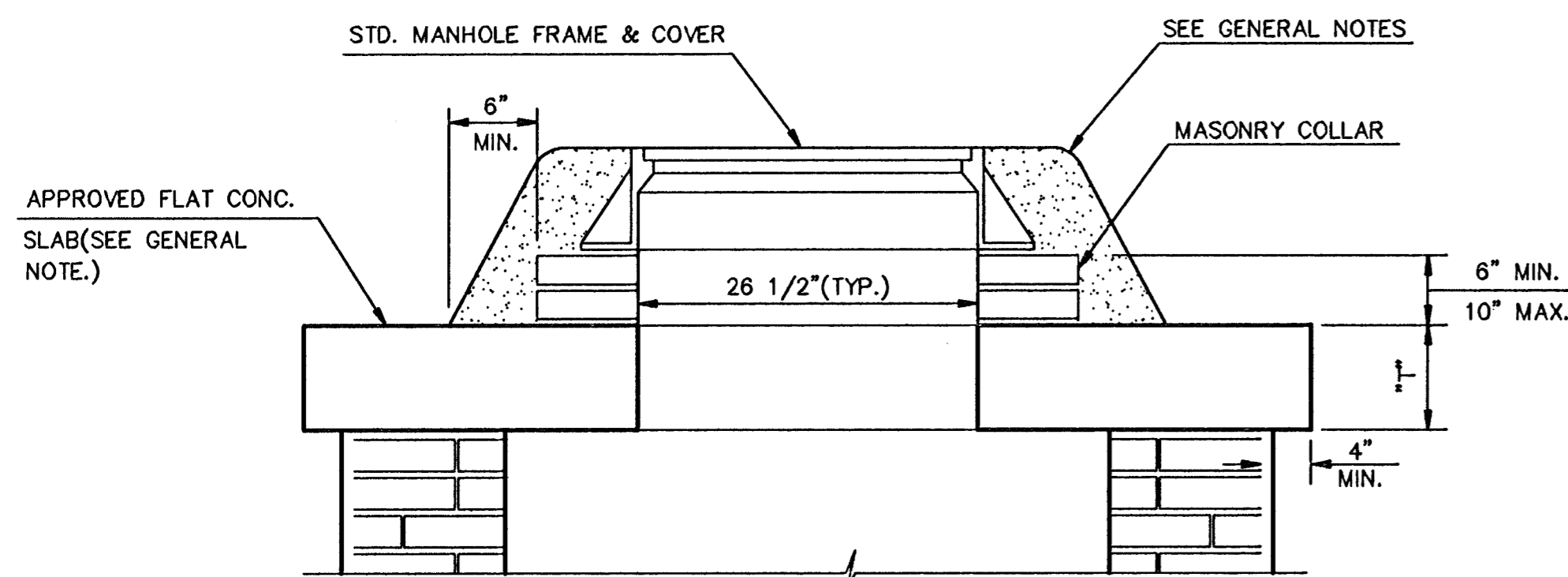
SHALLOW TYPE "A" MANHOLE



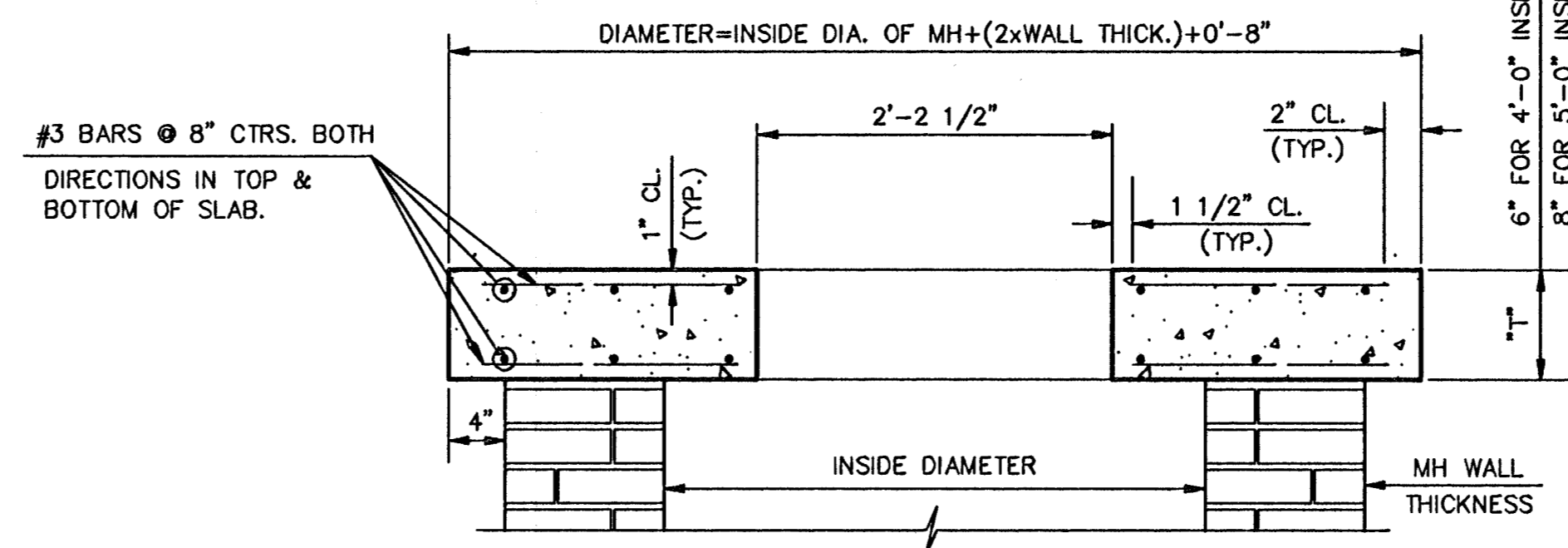
SHALLOW TYPE "B" MANHOLE



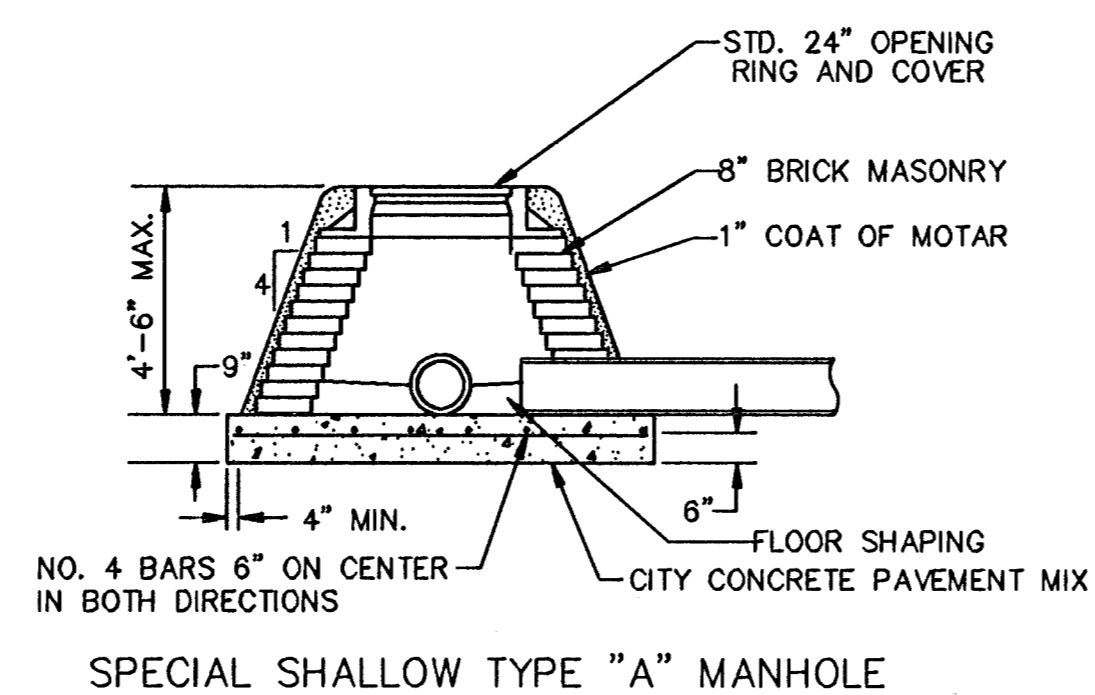
PLAN



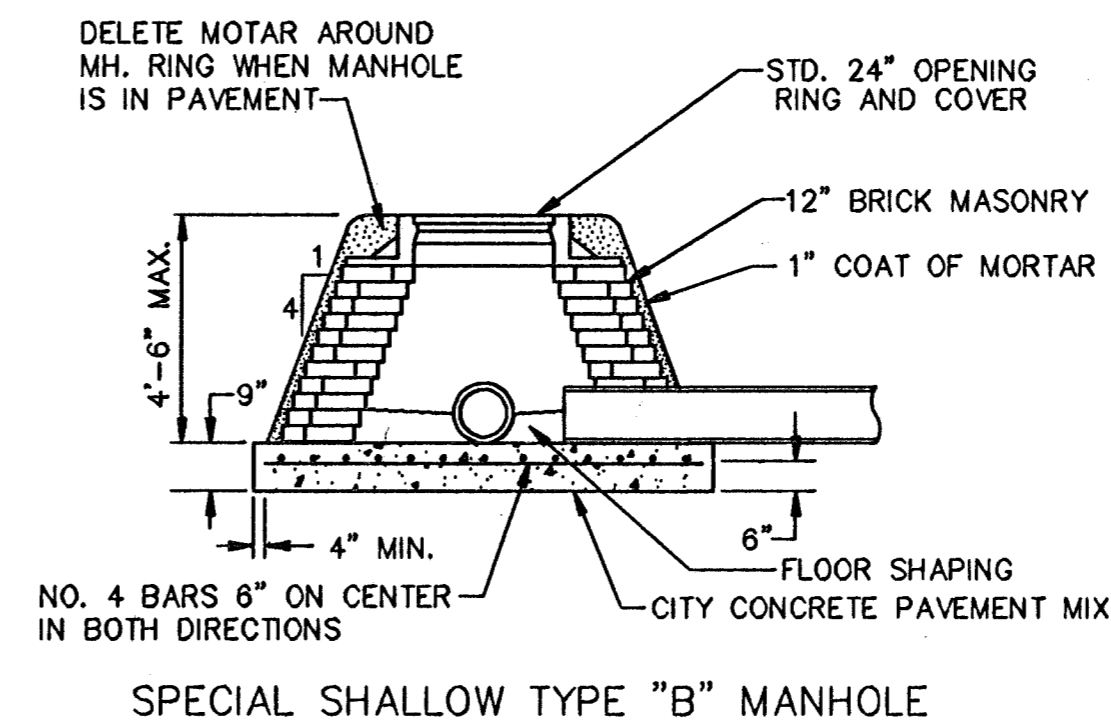
MASONRY COLLAR DETAIL



SECTION A-A
FLAT CONCRETE SLAB DETAILS



SPECIAL SHALLOW TYPE "A" MANHOLE



SPECIAL SHALLOW TYPE "B" MANHOLE

GENERAL NOTES

- MOTAR USED IN MASONRY CONSTRUCTION SHALL CONTAIN 8 SACKS OF CEMENT PER CUBIC YARD. CONCRETE USED IN MANHOLE BASES SHALL CONFORM TO THE REQUIREMENTS OF CONCRETE FOR CONCRETE PAVEMENT CONSTRUCTION AS SPECIFIED IN THE CITY STANDARD PAVING SPECIFICATIONS USING CITY CONCRETE CEMENT MIX WITHOUT AIR ENTAINING ADMIXTURE. MOTAR SHALL BE PLACED AROUND THE MANHOLE RING AS SHOWN ON THE DRAWINGS WHEN MANHOLES ARE CONSTRUCTED IN UNPAVED AREAS. TYPE "A" SHALLOW MANHOLES CAN BE USED ON SEWERS WHEN THE MANHOLE IS NOT LOCATED WITHIN PUBLIC STREET PAVEMENT. MANHOLES CONSTRUCTED WHERE PIPE SIZES ARE SMALLER THAN 24" SHALL HAVE AN INSIDE DIAMETER OF 4". MANHOLES CONSTRUCTED WHERE PIPE SIZES ARE 24" OR LARGER SHALL HAVE AN INSIDE DIAMETER OF 5". COMPLETED MANHOLE SHALL BE WITHOUT LEAKS AND WATER TIGHT.
- REINFORCING STEEL SHALL BE INSTALLED IN THE MANHOLE BASES AND SHALL CONSIST OF NO. 4 BARS PLACED ON 6" CENTERS IN BOTH DIRECTIONS. THE MANHOLE BASE REINFORCEMENT SHALL BE PLACED 6" ABOVE THE BOTTOM OF THE MANHOLE BASE. ALL COSTS FOR FURNISHING AND INSTALLING REINFORCING STEEL SHALL BE INCLUDED IN THE UNIT PRICE BID FOR THE MANHOLE.
- THE FLOORS OF ALL MANHOLES SHALL BE SHAPED WITH FLOW CHANNELS SUCH THAT THE MANHOLES WILL BE SELF CLEANING AND FREE OF AREAS WHERE SOLIDS COULD BE DEPOSITED AS SEWAGE FLOWS THROUGH THE MANHOLE FROM ALL INLET PIPES TO THE OUTLET PIPE. FLOW CHANNELS SHALL BE FORMED TO MATCH THE BOTTOM HALVES OF THE INFLOWING PIPES AND THE OUTFLOWING PIPE AS SHOWN BY THE DRAWINGS. MANHOLE FLOORS SHALL HAVE SLOPES OF 3 INCHES PER FOOT IN THE AREAS OUTSIDE OF THE FLOW CHANNELS SLOPED TOWARD THE FLOW CHANNELS. PIPES LAID THROUGH MANHOLES SHALL HAVE THE TOP HALF REMOVED TO NEAT LINES FOR THE FULL INSIDE DIAMETER OF THE MANHOLE. MANHOLE FLOORS SHALL THEN BE SHAPED AROUND THE BOTTOM HALF OF THE PIPE WHICH FORMS THE FLOW CHANNEL.
- PIPES INSTALLED WITHIN THE EXCAVATION MADE FOR THE MANHOLE SHALL BE CRADLED WITH CONCRETE TO THE LIMITS OF THE MANHOLE EXCAVATION. WHEN CLAY PIPE IS USED, THE CRADLE SHALL EXTEND TO THE FIRST JOINT OUTSIDE THE MANHOLE. THE CRADLE SHALL BE TERMINATED AT THE CLAY PIPE JOINT IN A MANNER WHICH WILL MAINTAIN THE FLEXIBILITY OF THE JOINT. COST OF CRADLE WITHIN MANHOLE EXCAVATION OR TO CLAY PIPE JOINTS ADJACENT TO MANHOLE SHALL BE INCLUDED IN THE UNIT PRICE BID FOR THE MANHOLE.
- MANHOLE COVER CASTINGS AND MANHOLE FRAME CASTINGS SHALL CONFORM TO THE REQUIREMENTS AS INDICATED IN THE STANDARD SPECIFICATIONS AND AS SHOWN IN THE STANDARD DETAIL DRAWINGS.
- THE CROWNS OF INFLOWING PIPES SHALL NEVER BE SET LOWER THAN THE CROWN OF THE OUTFLOWING PIPE.
- STANDARD SHALLOW MANHOLES TYPE "A" AND "B" SHALL BE PAID FOR AT THE UNIT PRICE BID PER EACH FOR THE TYPE AND DIAMETER INDICATED. STANDARD SPECIAL SHALLOW MANHOLES TYPE "A" AND "B" SHALL BE PAID FOR AT THE UNIT PRICE BID PER EACH FOR THE TYPE INDICATED. ALL STANDARD SHALLOW MANHOLE DIAMETERS WILL BE 4' UNLESS INDICATED OTHERWISE.

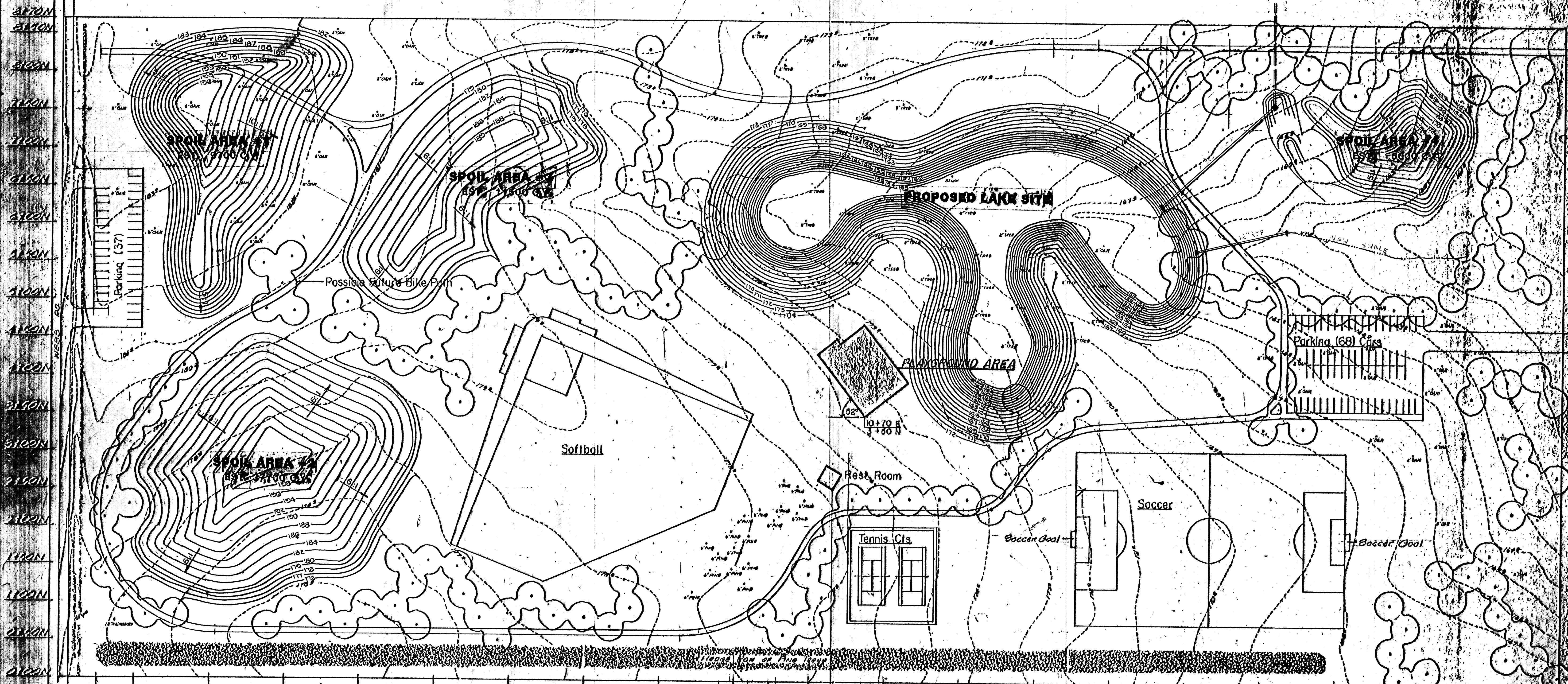
REVISED 3-93

STANDARD SHALLOW MANHOLES TYPE "A" AND TYPE "B"

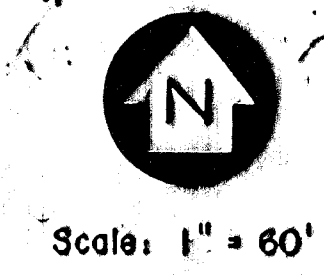
INDEX CODE 614750

CITY OF WICHITA, KANSAS

Design	C.O.W.	Checked by	Checked by	4
Drawn by	Date	Date	Date	Job No. 6



2170N
 2160N
 2150N
 2140N
 2130N
 2120N
 2110N
 2100N
 2090N
 2080N
 2070N
 2060N
 2050N
 2040N
 2030N
 2020N
 2010N
 2000N
 1990N
 1980N
 1970N
 1960N
 1950N
 1940N
 1930N
 1920N
 1910N
 1900N
 1890N
 1880N
 1870N
 1860N
 1850N
 1840N
 1830N
 1820N
 1810N
 1800N
 1790N
 1780N
 1770N
 1760N
 1750N
 1740N
 1730N
 1720N
 1710N
 1700N
 1690N
 1680N
 1670N
 1660N
 1650N
 1640N
 1630N
 1620N
 1610N
 1600N
 1590N
 1580N
 1570N
 1560N
 1550N
 1540N
 1530N
 1520N
 1510N
 1500N
 1490N
 1480N
 1470N
 1460N
 1450N
 1440N
 1430N
 1420N
 1410N
 1400N
 1390N
 1380N
 1370N
 1360N
 1350N
 1340N
 1330N
 1320N
 1310N
 1300N
 1290N
 1280N
 1270N
 1260N
 1250N
 1240N
 1230N
 1220N
 1210N
 1200N
 1190N
 1180N
 1170N
 1160N
 1150N
 1140N
 1130N
 1120N
 1110N
 1100N
 1090N
 1080N
 1070N
 1060N
 1050N
 1040N
 1030N
 1020N
 1010N
 1000N
 990N
 980N
 970N
 960N
 950N
 940N
 930N
 920N
 910N
 900N
 890N
 880N
 870N
 860N
 850N
 840N
 830N
 820N
 810N
 800N
 790N
 780N
 770N
 760N
 750N
 740N
 730N
 720N
 710N
 700N
 690N
 680N
 670N
 660N
 650N
 640N
 630N
 620N
 610N
 600N
 590N
 580N
 570N
 560N
 550N
 540N
 530N
 520N
 510N
 500N
 490N
 480N
 470N
 460N
 450N
 440N
 430N
 420N
 410N
 400N
 390N
 380N
 370N
 360N
 350N
 340N
 330N
 320N
 310N
 300N
 290N
 280N
 270N
 260N
 250N
 240N
 230N
 220N
 210N
 200N
 190N
 180N
 170N
 160N
 150N
 140N
 130N
 120N
 110N
 100N
 90N
 80N
 70N
 60N
 50N
 40N
 30N
 20N
 10N
 0N
 10S
 20S
 30S
 40S
 50S
 60S
 70S
 80S
 90S
 100S
 110S
 120S
 130S
 140S
 150S
 160S
 170S
 180S
 190S
 200S
 210S
 220S
 230S
 240S
 250S
 260S
 270S
 280S
 290S
 300S
 310S
 320S
 330S
 340S
 350S
 360S
 370S
 380S
 390S
 400S
 410S
 420S
 430S
 440S
 450S
 460S
 470S
 480S
 490S
 500S
 510S
 520S
 530S
 540S
 550S
 560S
 570S
 580S
 590S
 600S
 610S
 620S
 630S
 640S
 650S
 660S
 670S
 680S
 690S
 700S
 710S
 720S
 730S
 740S
 750S
 760S
 770S
 780S
 790S
 800S
 810S
 820S
 830S
 840S
 850S
 860S
 870S
 880S
 890S
 900S
 910S
 920S
 930S
 940S
 950S
 960S
 970S
 980S
 990S
 1000S
 1010S
 1020S
 1030S
 1040S
 1050S
 1060S
 1070S
 1080S
 1090S
 1100S
 1110S
 1120S
 1130S
 1140S
 1150S
 1160S
 1170S
 1180S
 1190S
 1200S
 1210S
 1220S
 1230S
 1240S
 1250S
 1260S
 1270S
 1280S
 1290S
 1300S
 1310S
 1320S
 1330S
 1340S
 1350S
 1360S
 1370S
 1380S
 1390S
 1400S
 1410S
 1420S
 1430S
 1440S
 1450S
 1460S
 1470S
 1480S
 1490S
 1500S
 1510S
 1520S
 1530S
 1540S
 1550S
 1560S
 1570S
 1580S
 1590S
 1600S
 1610S
 1620S
 1630S
 1640S
 1650S
 1660S
 1670S
 1680S
 1690S
 1700S
 1710S
 1720S
 1730S
 1740S
 1750S
 1760S
 1770S
 1780S
 1790S
 1800S
 1810S
 1820S
 1830S
 1840S
 1850S
 1860S
 1870S
 1880S
 1890S
 1900S
 1910S
 1920S
 1930S
 1940S
 1950S
 1960S
 1970S
 1980S
 1990S
 2000S



REVISED 3-83			
PLAYGROUND AREA			
INDEX CODE: 514750			
W. B. HARRISON PARK			
SPOIL AREAS 1, 2, 3, & 4			
BOARD OF PARK COMMISSIONERS			
WICHITA, KANSAS			
DATE	DRAWN	SCALE	SHEET 5 of 6
OCT-83	A	1" = 60'	

27.50 N
10.12 S

