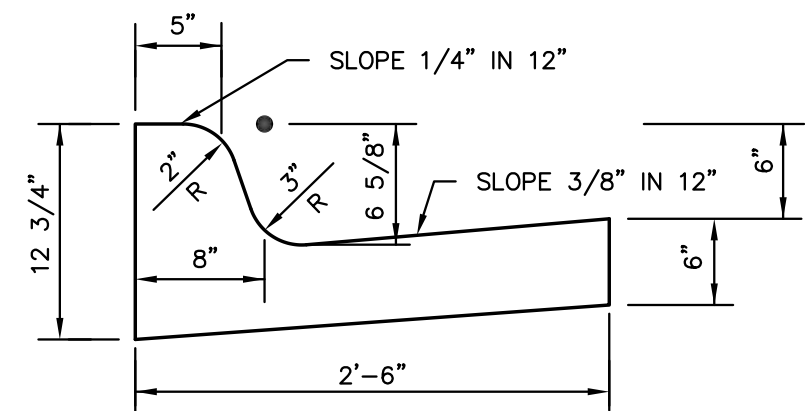
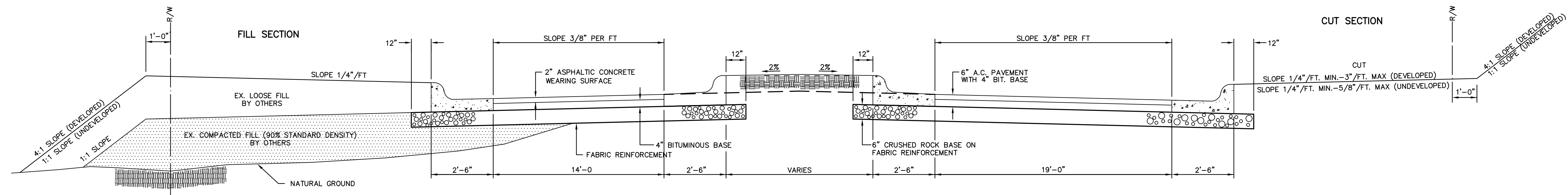
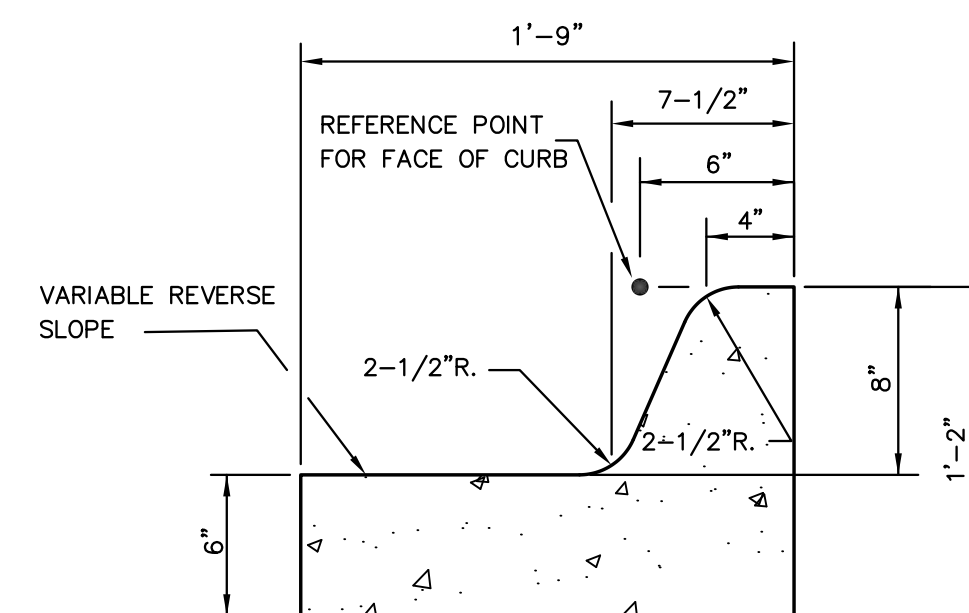


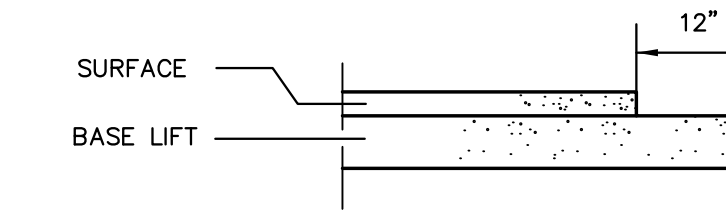
TYPICAL SECTION WITH MEDIAN TRANSVERSE SECTIONS



COMBINED CURB & GUTTER



**NON MOUNTABLE MEDIAN
COMBINED CURB & GUTTER (8')**



TRANSVERSE CONSTRUCTION JOINTS SHALL BE CONSTRUCTED IN FLEXIBLE BASE PAVEMENTS AT LOCATIONS WHERE PAVEMENT JOINS EXISTING FLEXIBLE BASE PAVEMENT AS SHOWN BY THE DETAIL. ALL COSTS ASSOCIATED WITH THE CONSTRUCTION OF THE TRANSVERSE JOINT SHALL BE INCLUDED IN THE BID PRICE FOR SQUARE YARDS 6" ASPHALTIC CONCRETE (4" BITUMINOUS BASE).

TRANSVERSE CONSTRUCTION JOINTS

**6 INCH ASPHALTIC CONCRETE PAVEMENT
WITH 5" CRUSHED ROCK BASE ON
GEOGRID REINFORCEMENT**

PAVING AND INCIDENTAL DRAINAGE PLANS
SUMMIT CROSSING
WICHITA, KANSAS

**PAVING
DETAILS**

SHEET TITLE
472-84797
PROJECT NUMBER

DESIGN BY **MKEC**
DRAWN BY **MKEC**
CHECKED BY **MKEC**

ISSUED **April 2010**
REVISED

SHEET NO.
3 of 22