

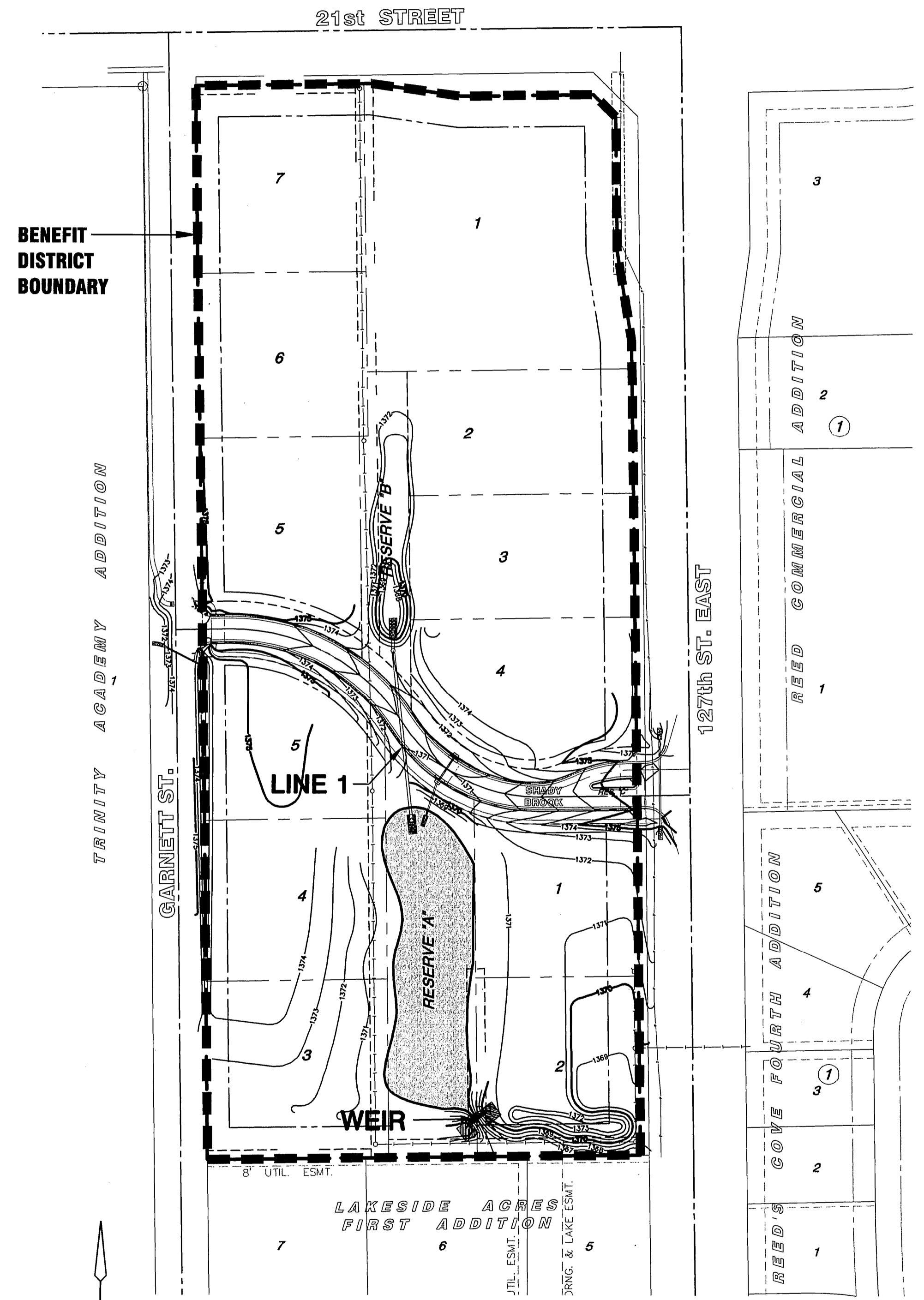
STORM WATER DRAIN #355 TO SERVE SUMMIT CROSSING ADDITION

THE CITY OF WICHITA, KANSAS
JAMES L. ARMOUR, P.E., CITY ENGINEER
PROJ. # 468-84580
OCA 751487

PHASE 2 - SHORELINE PROTECTION

CHURCH OF THE
MAGDALEN 2ND ADDITION
A 1

HAWTHORNE
ADDITION
4



INDEX TO DRAWINGS

SHEET NO.	DESCRIPTION
1.....	TITLE SHEET
2.....	SHORELINE PROTECTION
3.....	EROSION CONTROL/SEEDING
4.....	STORM WATER PLAN & PROFILE
5.....	WEIR DETAILS
6-10.....	BMP DETAILS
11.....	FINAL PLAT

GENERAL NOTES

- UNLESS SHOWN OR STATED OTHERWISE ON THESE DRAWINGS, MATERIALS AND CONSTRUCTION SHALL BE IN ACCORDANCE WITH CITY OF WICHITA STANDARD SPECIFICATIONS.
- CONTRACTOR WILL BE REQUIRED TO PROVIDE A MINIMUM ADVANCE NOTICE OF SEVENTY-TWO (72) HOURS TO UTILITY COMPANIES PRIOR TO STARTING ANY EXCAVATION AS FOLLOWS:

KANSAS ONE-CALL	OR LOCAL (WICHITA)	1-800-344-7233 687-2470
-----------------	--------------------	----------------------------

THE CONTRACTOR MUST NOTIFY THE FOLLOWING IN CASE OF EMERGENCY:

COX COMMUNICATIONS (CABLE)	262-0661
WESTAR (ELECTRIC)	261-6512
KANSAS GAS SERVICE (GAS)	832-3101
SBC (TELEPHONE)	800-870-8390
CITY OF WICHITA WATER & SEWER	262-6000
BLACK HILLS ENERGY (GAS)	800-694-8989

- THE CONTRACTOR SHALL BE RESPONSIBLE FOR PRESERVING PROPERTY IRONS. THE CONTRACTOR WILL BE REQUIRED TO RE-ESTABLISH ANY PROPERTY IRONS WHICH ARE DAMAGED OR DESTROYED BY HIS CONSTRUCTION OPERATIONS. SUCH IRONS SHALL BE RE-ESTABLISHED BY A LICENSED LAND SURVEYOR IN ACCORDANCE WITH STATE LAWS.

- EXISTING UTILITIES AND THEIR LOCATIONS, AS SHOWN ON THE PLANS, REPRESENT THE BEST INFORMATION OBTAINABLE FOR DESIGN. LOCATION INFORMATION HAS BEEN OBTAINED FROM THE VARIOUS UTILITY COMPANIES AND IS EITHER FROM COMPANY RECORD DRAWINGS OR COMPANY PROVIDED FIELD LOCATIONS. THE PLAN LOCATIONS SHOWN ARE NOT GUARANTEED. ADDITIONAL EXISTING UTILITIES MAY ALSO BE ENCOUNTERED.

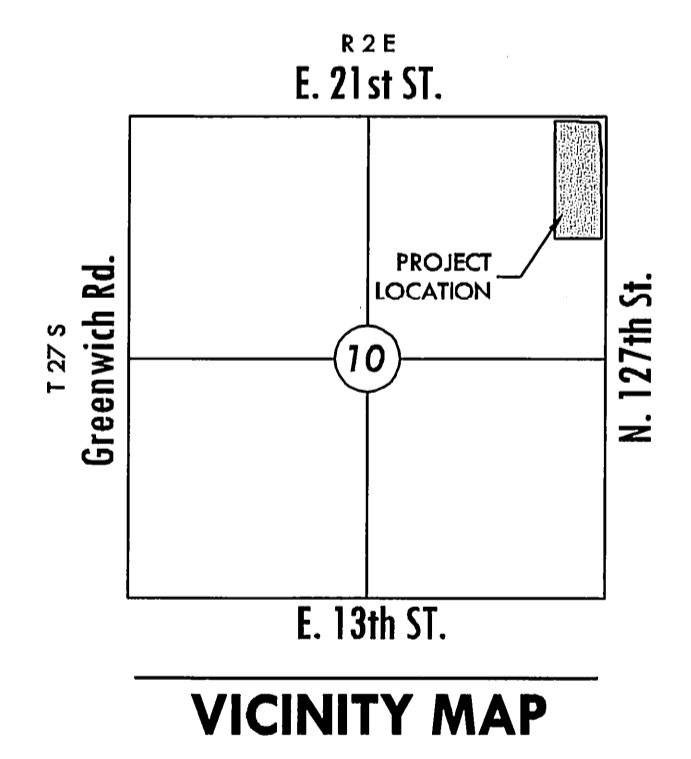
- RUBBLE FROM THE REMOVAL OF MISCELLANEOUS STRUCTURES AND EXCESS EXCAVATION WHICH IS TO BE WASTED SHALL BE DISPOSED OF ON SITES TO BE PROVIDED BY THE CONTRACTOR. THESE SITES SHALL BE APPROVED BY THE ENGINEER AS TO SUITABILITY, APPEARANCE AND SITE LOCATION. LOCATIONS THAT, IN THE OPINION OF THE ENGINEER, WILL LEAVE AN UNSIGHTLY APPEARANCE WILL NOT BE APPROVED. ALL DISPOSAL SITES MUST BE APPROVED BY THE KANSAS DEPARTMENT OF HEALTH AND ENVIRONMENT. MATERIAL EITHER STOCKPILED OR DISPOSED OF IN A FLOOD PLAIN WOULD REQUIRE A KANSAS STATE BOARD OF AGRICULTURE PERMIT. ANY MATERIAL DUMPED IN WATERS OF THE UNITED STATES OR WETLANDS IS SUBJECT TO U.S. CORPS OF ENGINEERS PERMITTING REGULATIONS. ANY MATERIAL BURIED OR STOCKPILED BEYOND APPROVED CONSTRUCTION LIMITS WOULD REQUIRE ADDITIONAL ARCHAEOLOGICAL INVESTIGATIONS UNLESS BURIED IN A PREVIOUSLY APPROVED BORROW LOCATION.

- ALL COMPACTION OF EARTHWORK SHALL BE 95% STANDARD DENSITY.

- OTHER CONSTRUCTION MAY BE UNDER WAY SIMULTANEOUSLY WITH THIS PROJECT. THE CONTRACTOR SHALL COORDINATE WITH ANY CONTRACTORS CONSTRUCTING OTHER PORTIONS OF THE PROJECT.

- EXCESS EXCAVATION SHALL BE STOCKPILED ON-SITE IN A LOCATION APPROVED BY THE FIELD ENGINEER.

- AS THE PROJECT NEARS COMPLETION, THE CONTRACTOR SHALL RIP (SCARIFY) ALL HAUL ROADS WITH AN AGRICULTURAL IMPLEMENT INTENDED FOR SUCH PURPOSES TO A DEPTH OF 18". MULTIPLE PASSES MAY BE NECESSARY TO THOROUGHLY ALIEVATE COMPACTION.



GRADING AND DRAINAGE PLANS
SUMMIT CROSSING
 WICHITA, KANSAS

TITLE SHEET
SHEET TITLE
468-84580
PROJECT NUMBER

RKO | RKO | GJA
DESIGNED | DRAWN | CHECKED

ISSUED
May 2010
REVISED

SHEET NO.
1 of 11