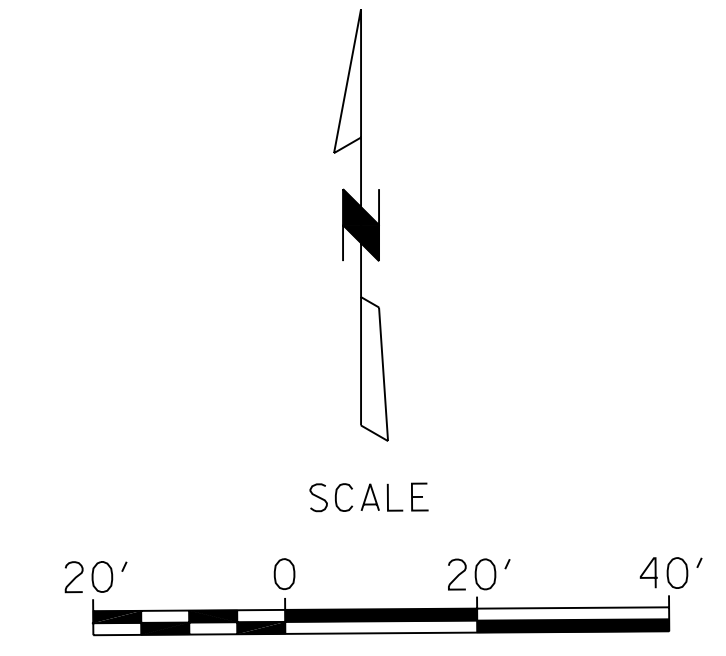


COUNTY	STATE	PROJECT NO.	YEAR	SHEET NO.	TOTAL SHEETS
SEDGWICK	KANSAS	472-84702	2010	10	36



SW 1/4 Sec. 6 T28S-R1E

SE 1/4 Sec. 6 T28S-R1E

CAUTION!
Existing water line
is adjacent to
proposed wingwall.

Sta. 199+90 Construct
3-10'x4'x102'-0 1/2" R.F.B.
with Soil Saver Lt.
Skew 11°-30' Lt.
See Sh. No. 11-17

Sta. 199+90.15 £ =
Sta. 50+00 £ Channel

Sta. 200+16.95 £ =
Sta. 50+00 £ Glenn

CAUTION!
Existing 3-Phase Overhead power lines.
Any work within a 15' region of the power
line requires utility owner to cover lines.
Coordinate with utility owner 2 weeks prior
to any anticipated work within 15' region.

CAUTION!
Work around existing
light pole. Coordinate
with utility owner.

Sta. 199+42.95 £ =
Sta. 50+00 £ Glenn

REMOVAL OF EXISTING STRUCTURE:

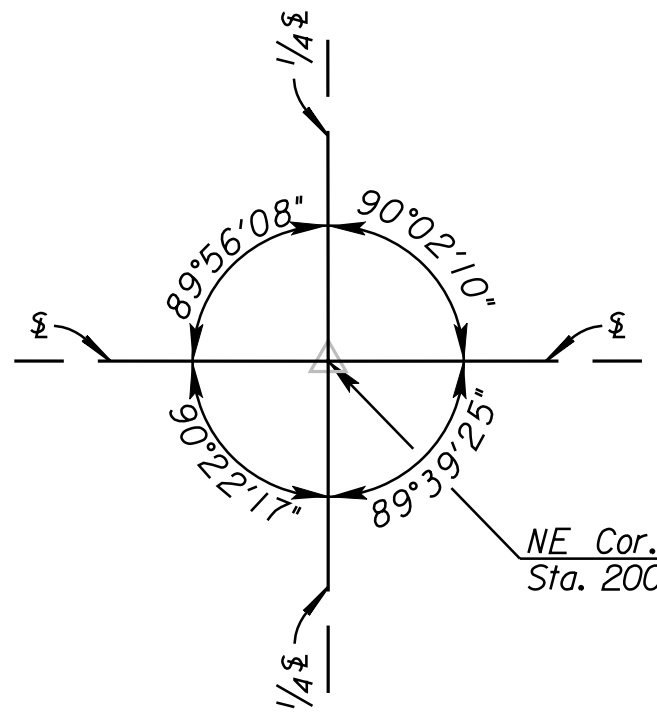
The Contractor shall remove the existing 3-8'x4' R.C.B. structure and 76.5' Roadway. In addition, Contractor shall remove existing Sanitary Sewer Siphon and Manholes as shown on the plans. All material removed shall become the property of the Contractor and shall be removed from the site by the Contractor. All removals shall be paid for as a lump sum bid item "Removal of Existing Structure".

The location and depth of the existing siphon and force main are approximate.

It is the Contractor's responsibility to contact each of the utility companies involved, prior to beginning any excavation or construction work on this project, for accurate field location of their utility and to coordinate the work with any necessary utility adjustment or relocation.

DRAINAGE DATA

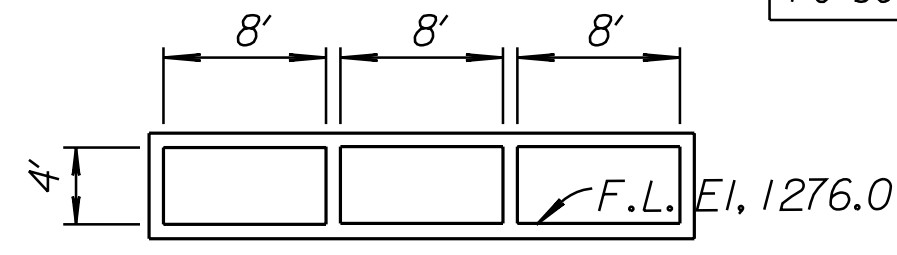
Drainage Area = 1340 acres
Design Discharge (Q₁₀₀) = 1000 cfs
Design High Water Elevation (HW)=5.6 Ft.)



NW 1/4 Sec. 7 T28S-R1E

NE Cor. NW 1/4, Sec. 7, T28S, R1E
Sta. 200+00

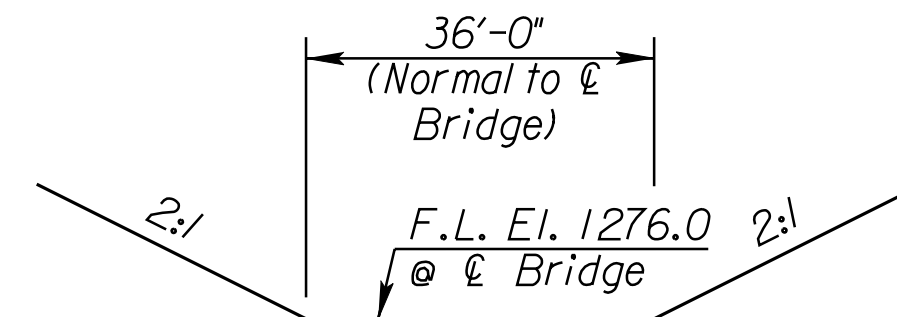
CAUTION!
Existing gas line on
existing RCB bridge.
To be relocated by Owner.



EXISTING STRUCTURE
Waterway Opening = 96 Sq.Ft.

Sta. 199+85.5 Remove
Exist. 3-8'x4'x78'-9" RCB Bridge

NE 1/4 Sec. 7 T28S-R1E



TYPICAL CHANNEL SECTION

CITY OF WICHITA
JAMES ARMOUR, P.E., CITY ENGINEER
31ST STREET BRIDGE AT GLENN

CONTOUR MAP

PB PARSONS BRINCKERHOFF
122. Wichita, Kansas

SCALE DATE DWG. No.
4/28/2010 35768A

T:\35768A\CADD\SHEETS\STRUCTURES\31STCM.dgn

SURV. PLOT CADD DES. TR. CKD. APP.